

Figure S1: Impact of Scr pepducin and ICL1-9 on left ventricular dimensions following I/R.

Representative M-mode echocardiography from C57BL/6 mice 4 weeks post-I/R having received intramyocardial injections of either Scr pepducin or ICL1-9 (1mg/mL each) at the time of surgery.

Figure S2: ERK1/2 and Akt phosphorylation in NRVM and hearts treated with Scr or ICL1-

9 pepducin. Immunoblot assessment of levels of phosphorylated ERK1/2 (P-ERK1/2) and Akt (P-Akt) in the lysates of NRVM treated with Scr or ICL1-9 pepducin (10 μ M each) (**A**) or hearts injected with the pepducins (1 mg/mL each) (**B**) for 3, 6 or 24 h. Histograms depict data normalized to total levels of ERK1/2 (T-ERK1/2) and Akt (T-Akt). n=2 for 3 and 6 h NRVM and heart samples, n = 8 for 24 h NRVM samples, n = 4 for 24 h heart samples. No significant differences were detected between ICL1-9 and Scr control at any timepoint, two-tailed unpaired t-test.

Figure S1

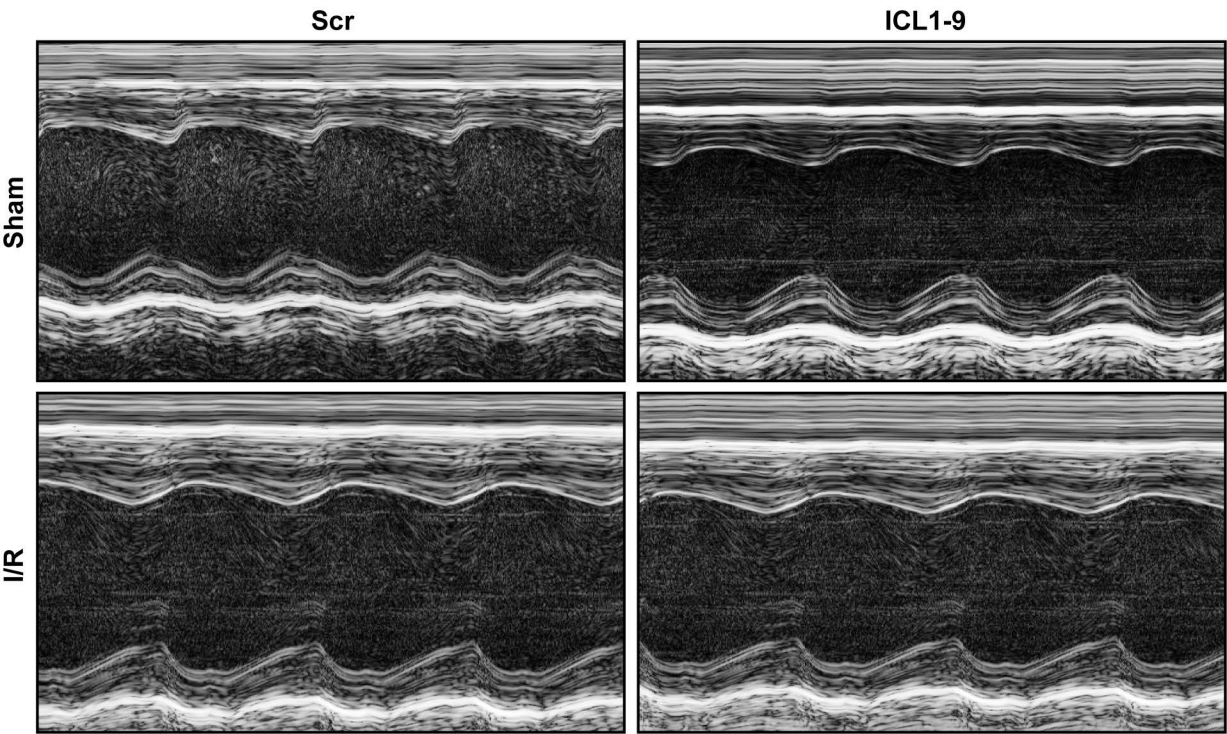
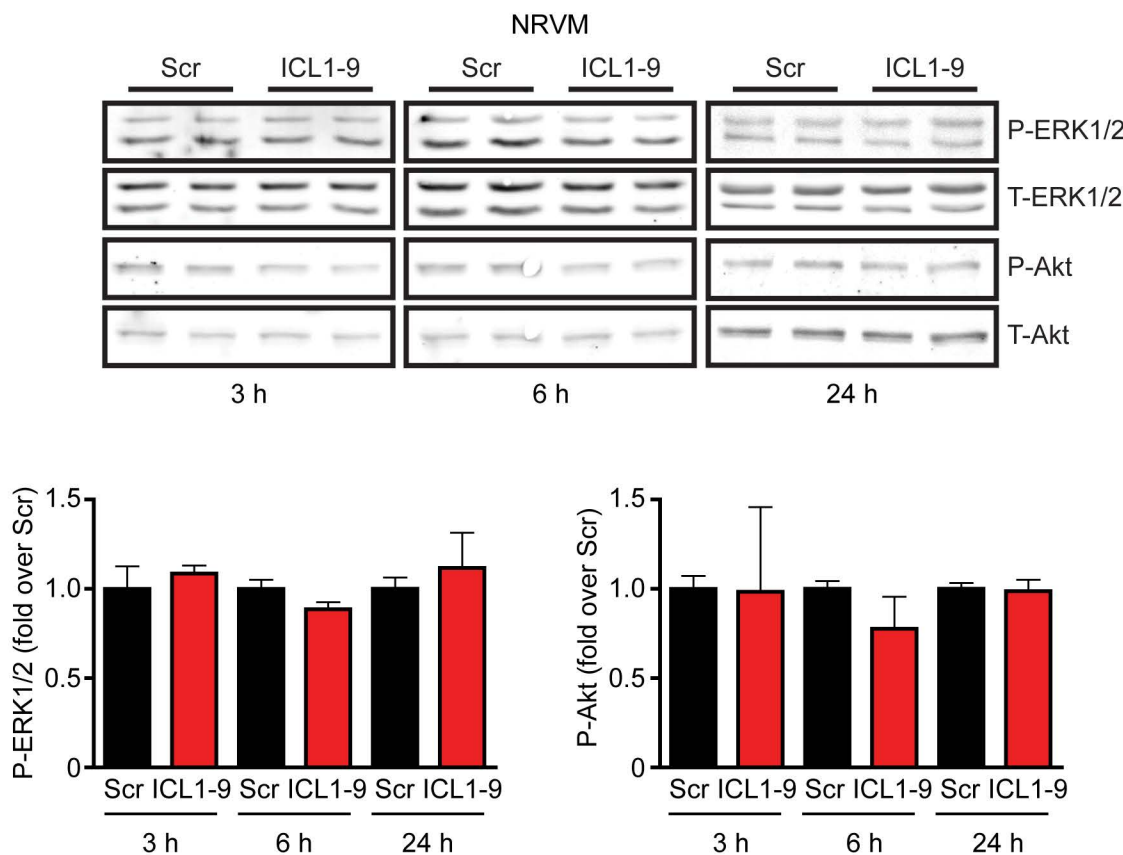


Figure S2

A



B

