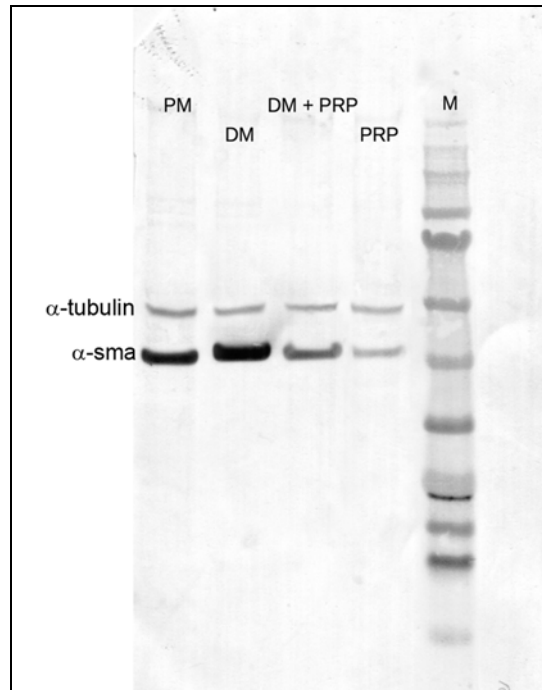
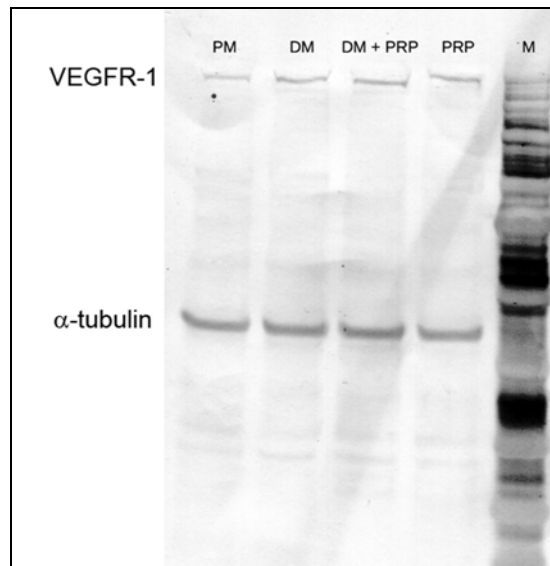


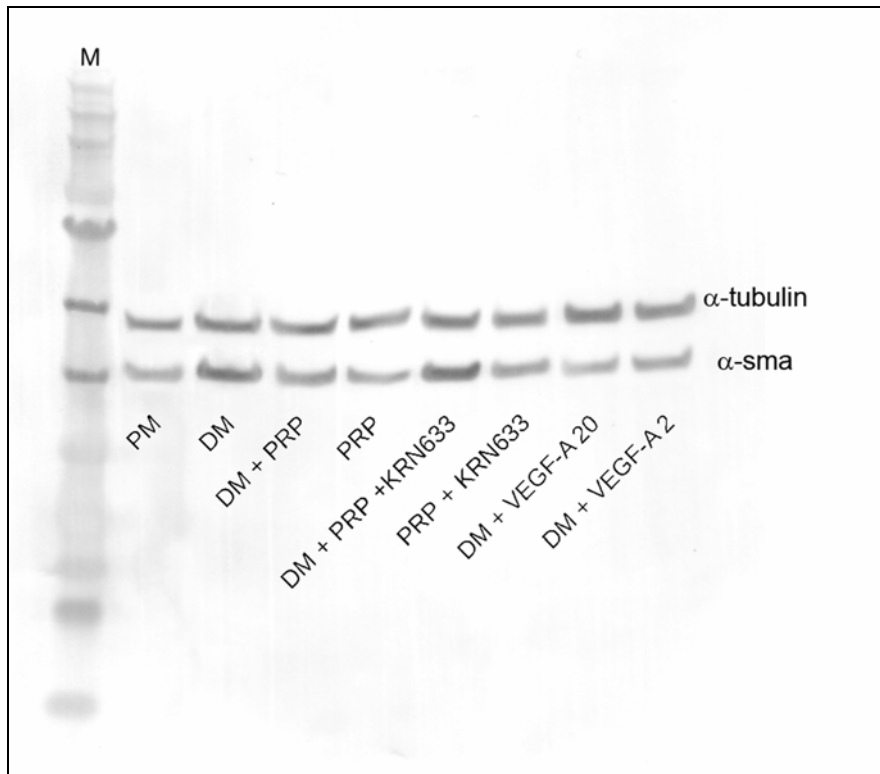
## Supplementary Materials



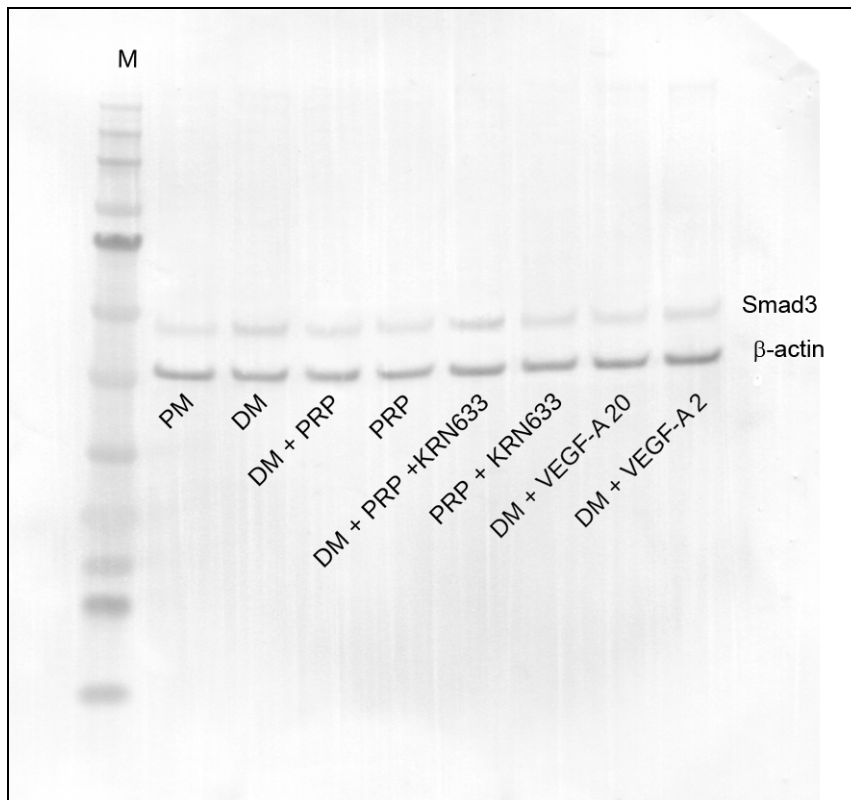
**Figure S1.** Original western blot of  $\alpha$ -sma and  $\alpha$ -tubulin expression of Figure 1 g. M: marker (Protein Marker VI (10 - 245) prestained, PanReac Applichem, VWR, Milan, Italy).



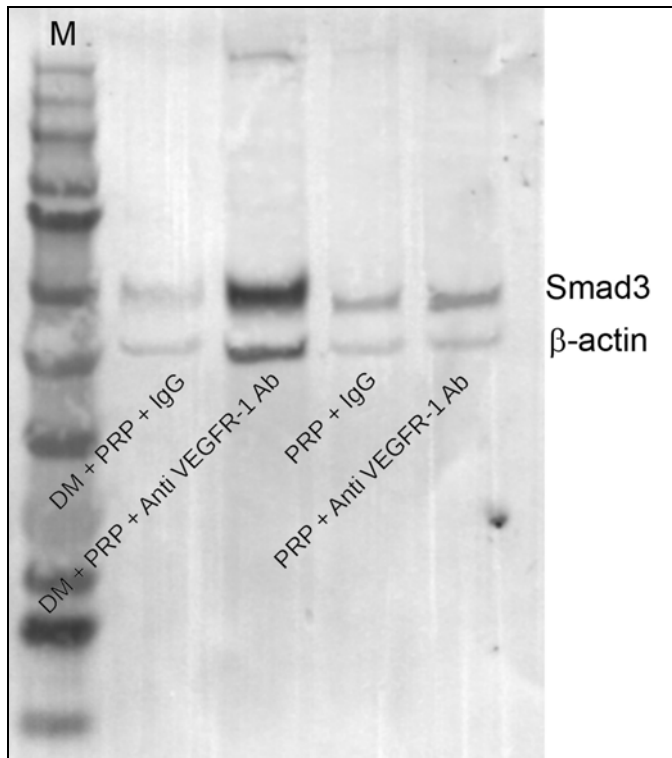
**Figure S2.** Original western blot of VEGFR-1 and  $\alpha$ -tubulin expression of Figure 4a. M: marker (Protein Marker VI (10 - 245) prestained, PanReac Applichem).



**Figure S3.** Original western blot of  $\alpha$ -sma and  $\alpha$ -tubulin expression of Figure 6a. M: marker (Protein Marker VI (10 - 245) prestained, PanReac Applichem).



**Figure S4.** Original western blot of Smad3 and  $\beta$ -actin expression of Figure 7a. M: marker (Protein Marker VI (10 - 245) prestained, PanReac Applichem).



**Figure S5.** Original western blot of Smad3 and  $\beta$ -actin expression of Figure 7b. M: marker (Protein Marker VI (10 - 245) prestained, PanReac Applichem).