

Table S1. General information of *Cryptococcus neoformans* and *C. gattii* clinical and environmental isolates according to species complex, sequence types (STs), macroscopic morphology, cellular and capsular size determination pre- and post-inoculation, mating type determination and mean survival time (days) in *G. mellonella*.

Species complex	ST	Strain (H0058-I-)	Macroscopic morphology			Pre-inoculation		Post-inoculation		Mating type	Mean survival in <i>G. mellonella</i> (days)	
			Texture	Aspect	Diameter (mm)	Cellular (µm)	Capsular (µm)	Cellular (µm)	Capsular (µm)			
<i>C. neoformans</i>	Clinical											
											Suppl. Fig 1a	
	2	3746	Mucoïd		3.70	7.53	0.21	4.49	0.52	α	5.60	
	2	3852			4.10	5.34	0.48	6.98	1.60		6.00	
	5	2881			3.10	5.57	0.52	4.58	1.76		2.80	
	6	3463			3.20	5.68	0.50	4.05	2.88		4.90	
	25	3104			6.90	5.49	0.75	6.14	0.49		3.90	
	32	2340	Non-mucoïd	Smooth	3.60	5.87	0.48	5.42	0.56		4.00	
	40	3589	Mucoïd		3.20	6.20	0.48	4.40	1.63		9.90	
	63	2503			5.60	5.75	0.52	4.48	0.87		9.20	
	69	3099			3.90	5.87	0.45	5.96	1.81		6.40	
	71	3489			3.00	3.30	0.34	5.22	1.60		3.90	
	77	708			6.30	6.71	1.14	6.40	1.03		4.60	
	77	3845			4.40	5.72	0.67	4.35	1.60		9.70	
	93	995			6.00	5.54	0.59	9.18	3.08		5.60	
	93	1226			5.40	5.99	0.57	6.39	0.86		3.60	
	93	2073			4.40	4.73	1.22	7.98	1.02		3.90	
	93	2356			Non-mucoïd	Rugose	3.64	6.09	0.55		6.84	1.10
	93	2624	4.37				6.53	0.45	11.88		1.61	5.90
	93	3189	Mucoïd		Smooth	4.07	6.72	0.59	11.51		1.25	5.80
	93	3938				3.79	6.15	0.48	4.40		0.9	10.80
	199	714				5.10	5.9	0.93	9.78		3.42	5.70
	307	707		4.90		5.85	0.92	7.97	2.55		4.10	
	307	727		4.30		5.44	0.83	8.00	1.32		6.20	
	307	2087		4.20		6.19	0.85	10.33	3.24		5.00	
	307	2274		5.90		6.12	0.89	9.16	2.25		4.00	
	Environmental											
											Suppl. Fig 2a	
	15	4419	Mucoïd	Smooth	3.10	5.69	0.65	6.04	1.12		α	7.80
	23	4706			3.40	4.29	0.25	6.80	1.34			7.10
56	4630	4.70			5.33	0.36	4.85	2.56	10.80			

	77	4013			3.40	5.74	0.67	4.37	2.05		9.05
	93	3877			4.10	6.12	0.50	4.23	0.91		6.35
	93	4711			4.40	6.39	0.59	4.35	0.91		4.75
	226	5353			3.20	1.70	0.29	4.35	0.91		6.15
<i>C. gattii</i>	Clinical										
											Suppl. Fig 1b
	25	212	Non-mucoid	Smooth	4.50	4.49	0.68	11.1	2.25	a	8.00
	25	2877	Mucoid		3.90	5.74	0.46	5.50	1.20		6.00
	47	255			5.40	5.40	2.88	9.40	1.85	α	4.20
	51	3286			4.10	5.64	0.33	4.30	2.10		7.90
	58	3031			4.40	4.98	0.47	6.10	1.10		5.00
	85	792			3.60	3.57	0.66	8.90	2.21		8.00
	106	1510			6.90	6.93	2.76	7.60	0.90	4.30	
	323	3146			4.80	6.45	0.83	6.70	6.10	a	9.40
	324	3407			3.50	4.40	1.39	4.30	1.40	α	7.90
	Environmental										
											Suppl. Fig 2b
	25	3526	Mucoid	Smooth	3.80	3.08	0.25	5.70	1.20	a	8.00
	75	3593			2.30	2.45	0.65	5.20	1.90		5.40
	79	3080			3.80	1.89	0.25	4.30	1.60	α	10.60
79	3874	3.20			3.09	0.29	4.30	1.50	9.60		
79	4064	3.90			1.86	0.29	4.30	1.60	8.70		

Table S2. Control strains of *Cryptococcus neoformans* and *C. gattii* used in the study of virulence in the invertebrate model of *Galleria mellonella* and in phenotypic assays.

Collection ID	Species	Assay involved	Characteristics (Reference)	
JEC20	<i>C. neoformans</i> var. <i>neoformans</i>	In vivo study	Low virulence in <i>G. mellonella</i> (10)	
JEC21		Mating type	Mating type a (17)	
H99	<i>C. neoformans</i> var. <i>grubii</i>	Mating type	Mating type α (17)	
H0058-I-580		In vivo study	High virulence in <i>G. mellonella</i> (10)	
H0058-I-755			Cellular and capsular size	Capsular size 0.59-0.85 μm (15)
H0058-I-737			Cellular and capsular size	Capsular size 0.44-0.6 μm (15)
H0058-I-1580		Colony morphology	Cellular and capsular size	Capsular size 0.33-0.85 μm (15)
H0058-I-1580			Colony morphology	Non-mucoid, rough border (15)
			Colony morphology	Non-mucoid, smooth (15)
H0058-I-1320 /B-3506	<i>C. gattii</i>	Cellular and capsular size	Capsular size 0.75-0.95 μm (15)	
H0058-I-2508 /CDC2272		Colony morphology	Mucoid, smooth (15)	
		In vivo study	High virulence in <i>G. mellonella</i>	

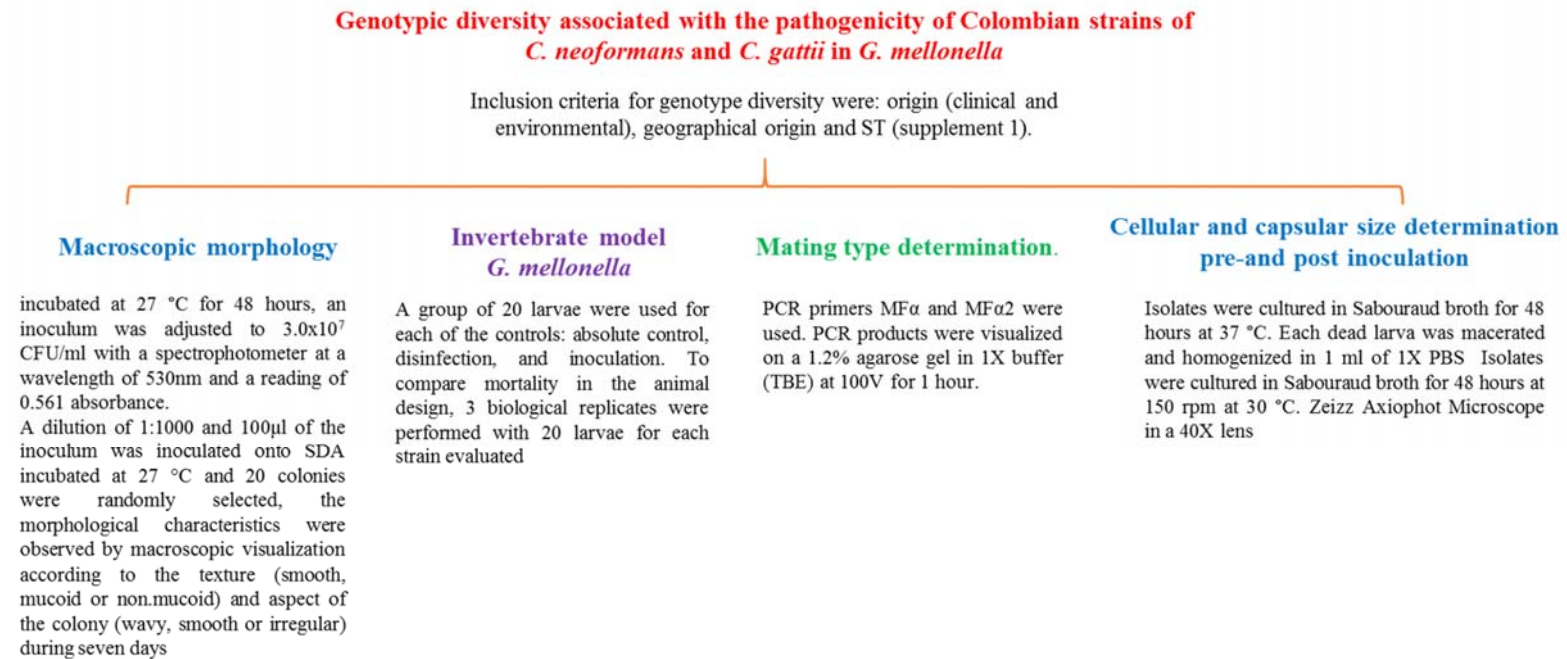


Figure S1. Flowchart of the methodology used. Inclusion criteria, macroscopic morphology, mating type determination, invertebrate model in *Galleria mellonella* and cellular and capsular size determination pre- and post-inoculation.

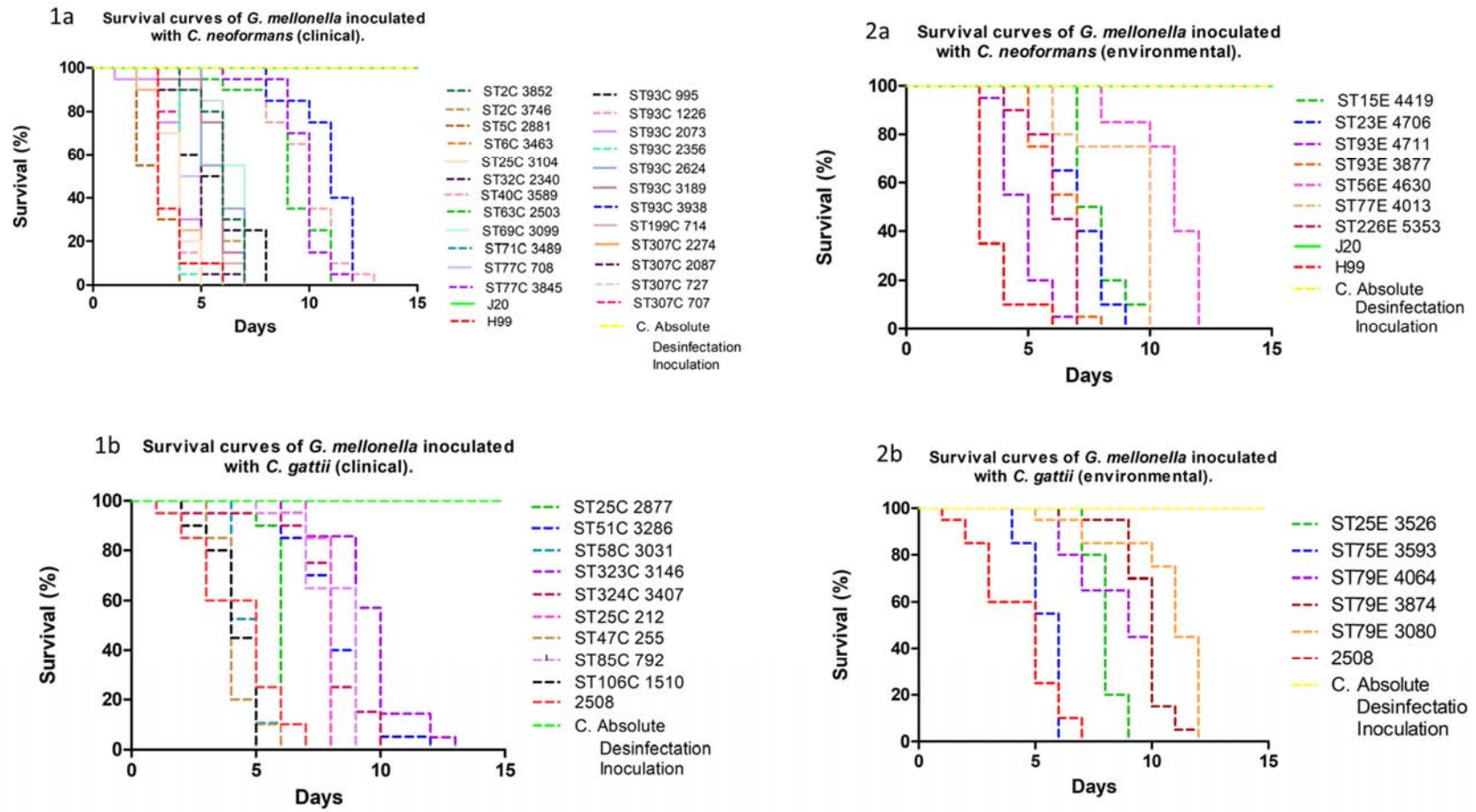


Figure S2. Survival curves of *G. mellonella* inoculated with *C. neoformans* (1a clinical isolates -2a environmental isolates). Survival curves of *G. mellonella* inoculated with *C. gattii* (1b clinical isolates, 2b environmental isolates).