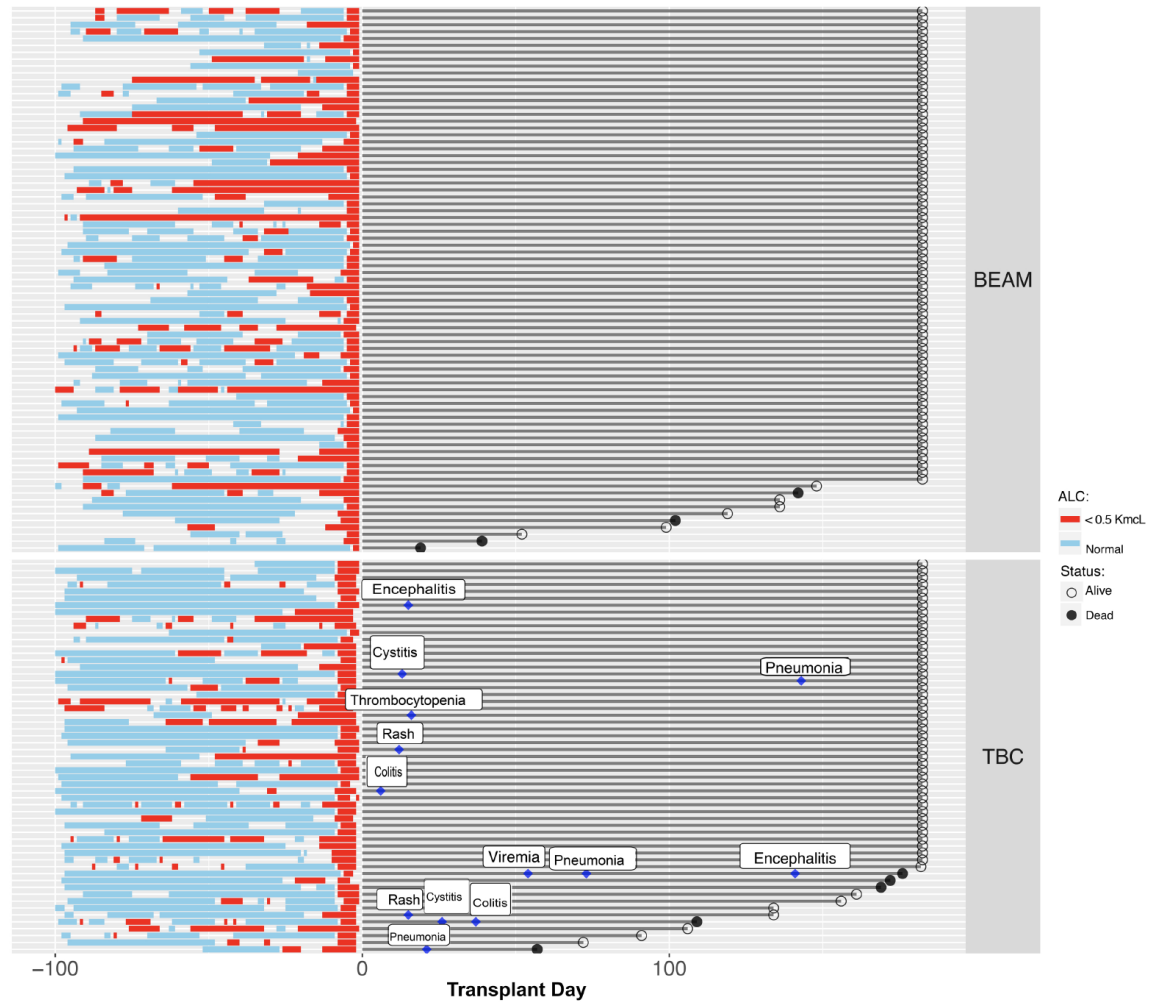


423
424
425

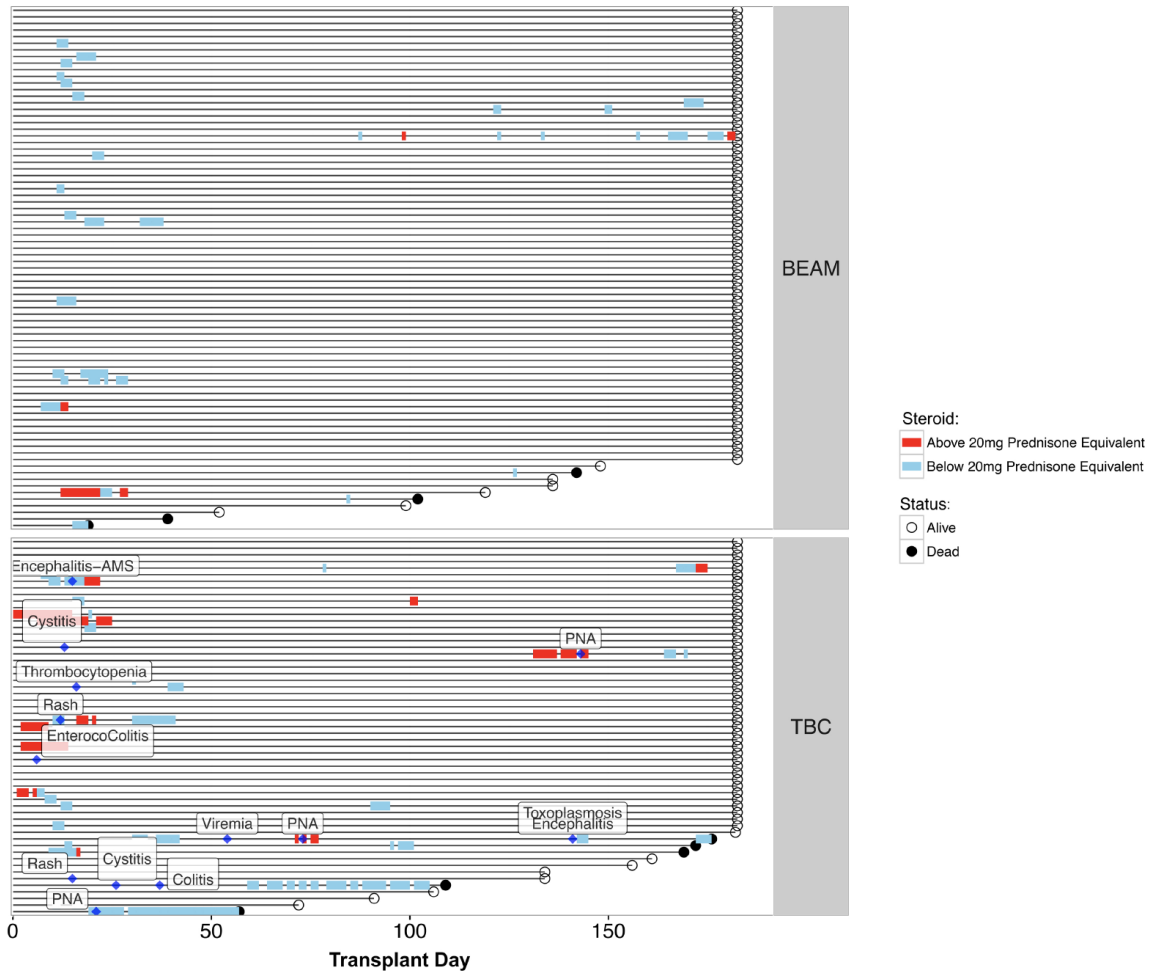
Appendix:

Supplemental Figure S1. Pre-ASCT Lymphopenia Compared Between TBC and BEAM



426
427
428
429
430
431
432
433
434
435

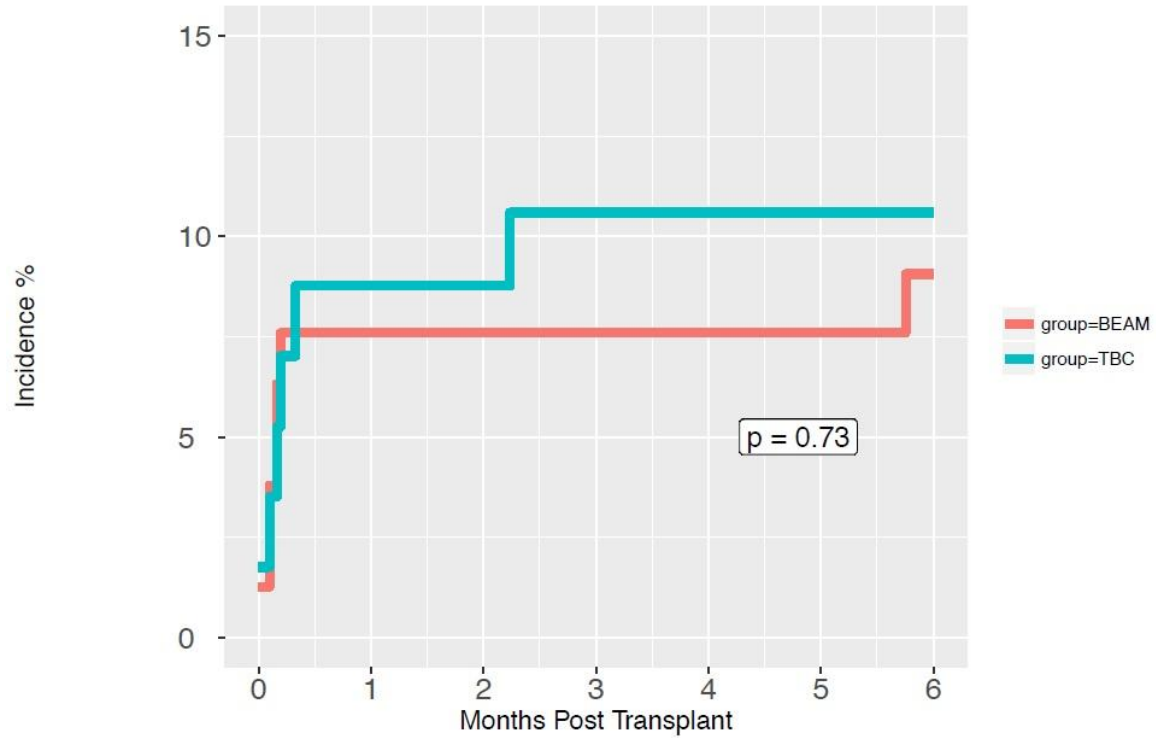
The degree of lymphopenia before ASCT (before day 0) is compared between TBC-ASCT and BEAM-ASCT patients. Lymphopenia is defined as a single patient having at least one 14-day period with an ALC below 0.5 K/mL. There was no significant difference between the groups ($p=0.84$)

436 **Supplemental Figure S2. Post-ASCT Steroid Use Compared Between TBC and BEAM**

437
 438
 439
 440
 441
 442
 443
 444
 445
 446

Corticosteroid exposure was compared between TBC-ASCT and BEAM-ASCT patients from day 0 to 180. Corticosteroid use was defined as having received equivalent doses of prednisone 20 mg with first dose greater than or equal to 20 mg treated as a time dependent variable.

447 **Supplemental Figure S3.** Cumulative Incidence of Bloodstream Infections Compared
 448 Between TBC and BEAM
 449



group=TBC	57	53	51	47	44	39	34
group=BEAM	79	73	71	71	68	64	62

450
 451
 452
 453
 454
 455
 456
 457
 458

Non-coagulase negative *Staphylococcus aureus* bloodstream infections (BSIs) were compared between TBC-ASCT and BEAM-ASCT patients with no significant difference noted.

459 **Supplemental Table S1.** Types of Non-Coagulase Negative Staphylococcus aureus
460 Infections Compared Between TBC and BEAM

Organism	BEAM	TBC
Escherichia coli	3	4
Streptococcus viridans	2	0
Klebsiella pneumoniae	1	1
Bacillus spp.	1	0
Lactobacillus rhamnosus	0	1
Staphylococcus aureus (MSSA)	1	0
Candida krusei	0	1
TOTALS	9	7

461
462
463

Accepted Manuscript