

# Protein Phosphatase (*PP2C9*) Induces Protein Expression Differentially to Mediate Nitrogen Utilization Efficiency in Rice under Nitrogen-Deficient Condition

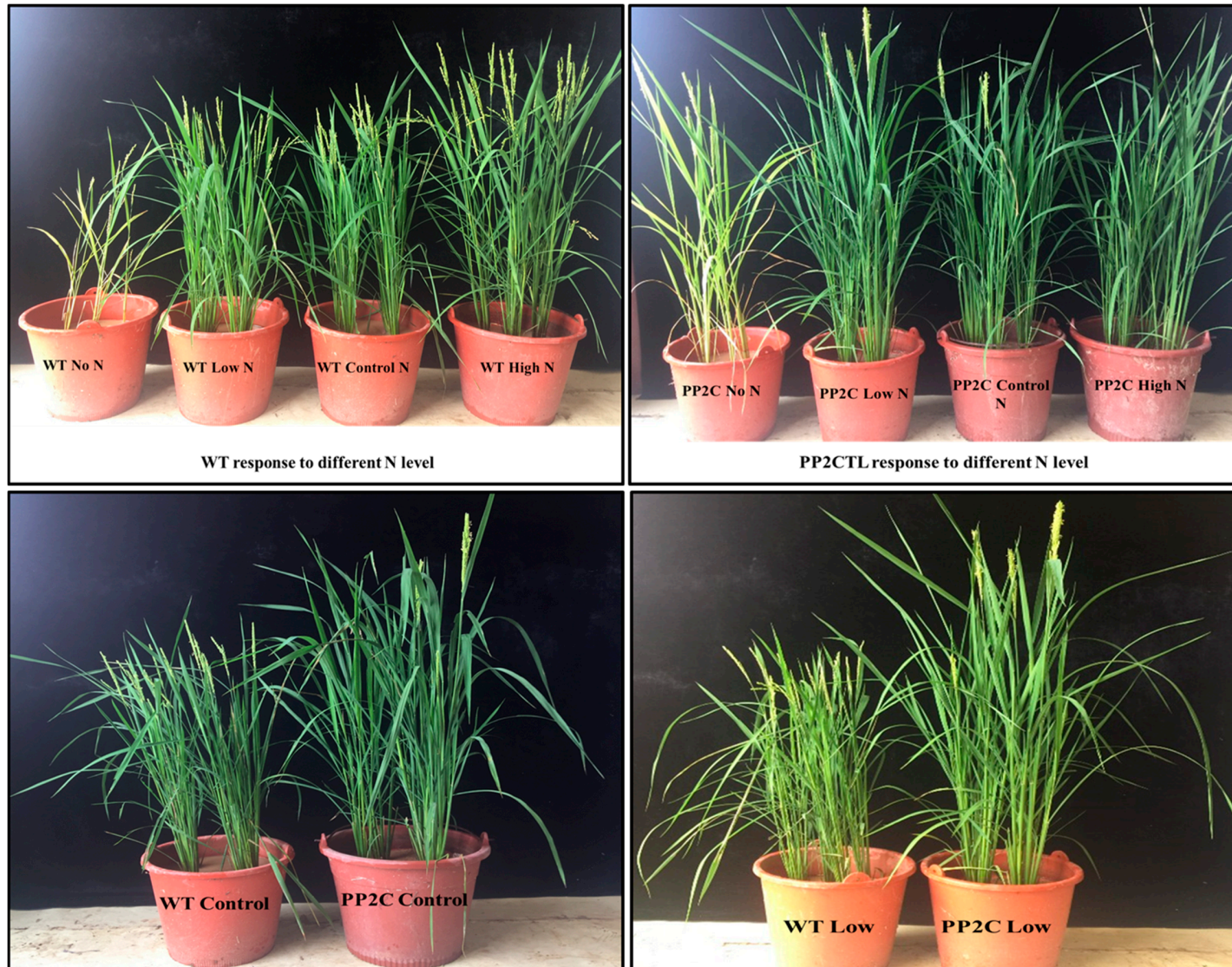
Muhammad Waqas <sup>1,2,\*</sup>, Shizhong Feng <sup>3</sup>, Hira Amjad <sup>2,3</sup>, Puleng Letuma <sup>2,3</sup>, Wenshan Zhan <sup>3</sup>, Zhong Li <sup>1,2</sup>, Changxun Fang <sup>1,2,3</sup>, Yasir Arafat <sup>2,3</sup>, Muhammad Umar Khan <sup>2,3</sup>, Muhammad Tayyab <sup>1,2</sup>, Wenxiong Lin <sup>1,2,3,\*</sup>

<sup>1</sup> Key Laboratory for Genetics, Breeding and Multiple Utilization of Crops, Ministry of Education/College of Crop Sciences, Fujian Agriculture and Forestry University, Fuzhou 350002, China; lizhong021@126.com (Z.L.); fcx007@fafu.edu.cn (C.F.); tyb.pk@hotmail.com (M.T.)

<sup>2</sup> Fujian Provincial Key Laboratory of Agroecological Processing and Safety Monitoring, College of Life Sciences, Fujian Agriculture and Forestry University, Fuzhou 350002, China; heraamahmood@yahoo.com (H.A.); pulengletuma@yahoo.com (P.L.); arafat\_pep@yahoo.com (Y.A.); umar.khan018@yahoo.com (M.U.K.)

<sup>3</sup> Key Laboratory of Crop Ecology and Molecular Physiology (Fujian Agriculture and Forestry University), Fujian Province University, Fuzhou 350002, China; M18120821563@163.com (S.F.); 1170525027@fafu.edu.cn (W.Z.)

\* Correspondence: waqasjutt\_19@yahoo.com (M.W.); lwx@fafu.edu.cn (W.L.)



**Figure S1:** Phenotypic response of *WT* and *PP2C9TL* under different levels of N at heading stage.

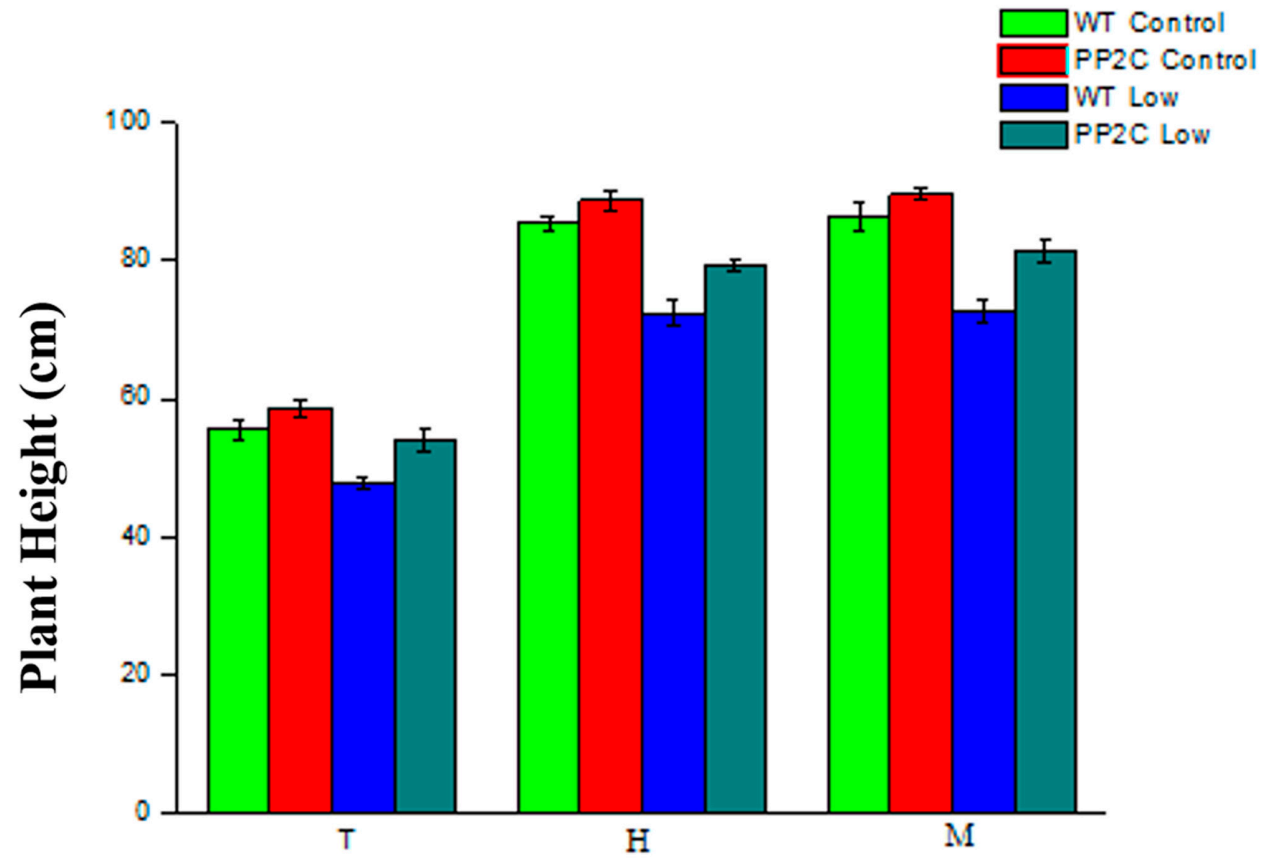
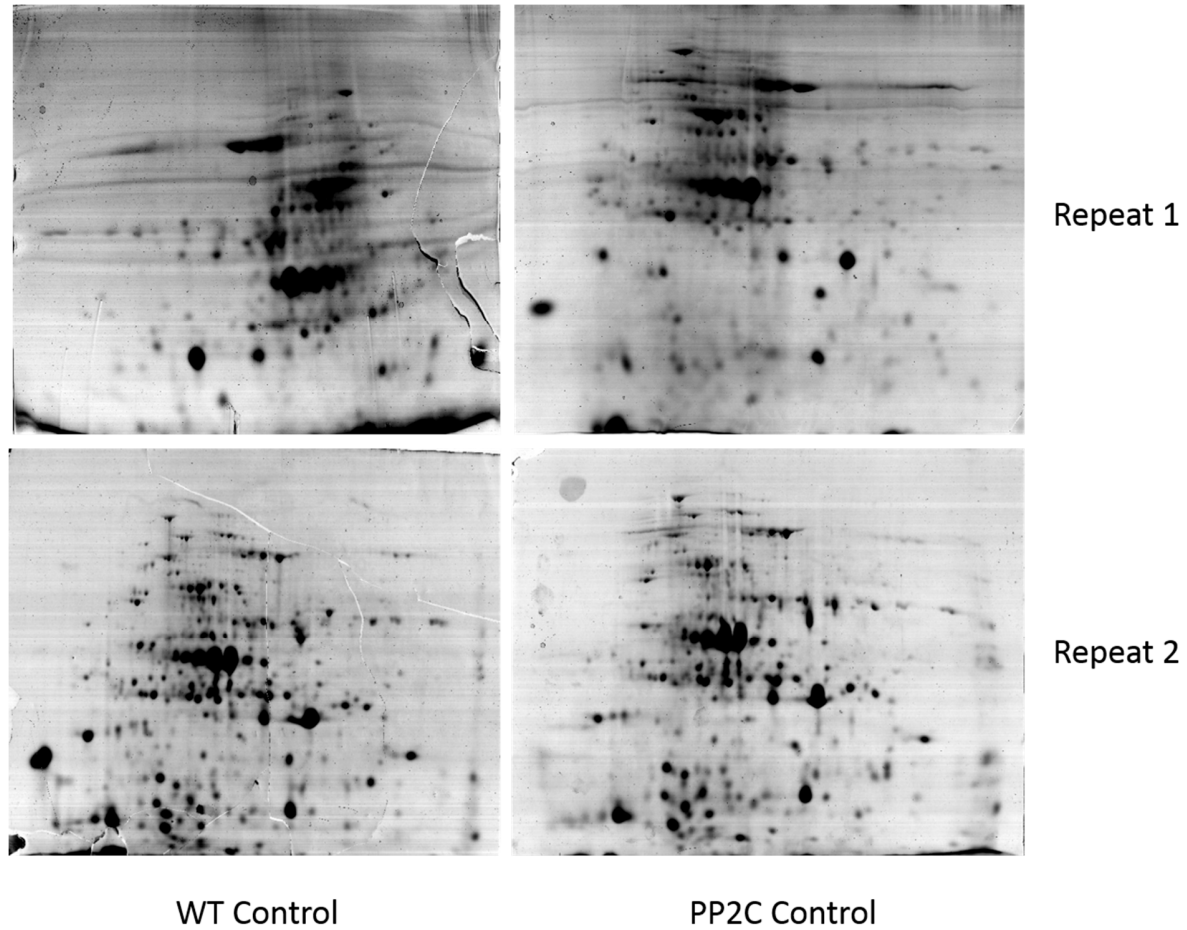
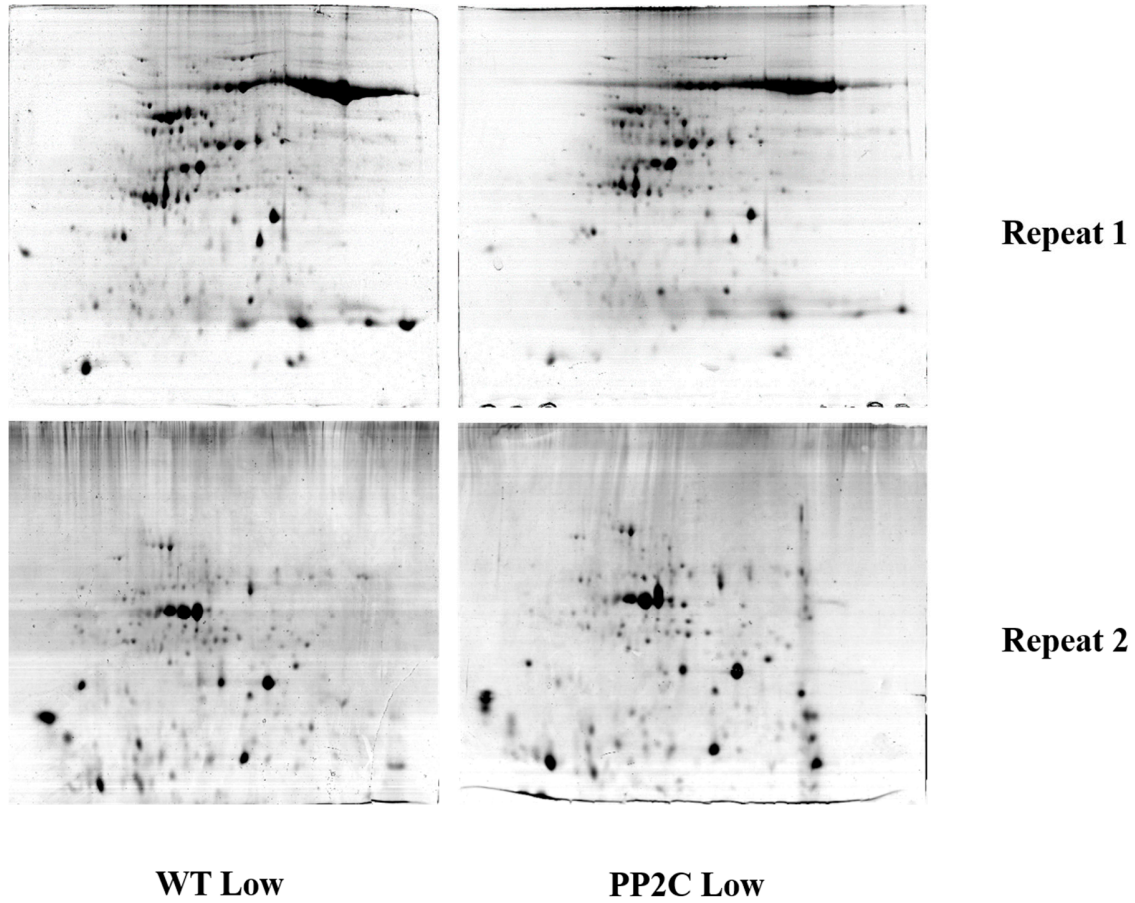


Figure S2: Plant height of WT and *PP2C9TL* under different levels of N at Tillering, Heading and Maturity stage.

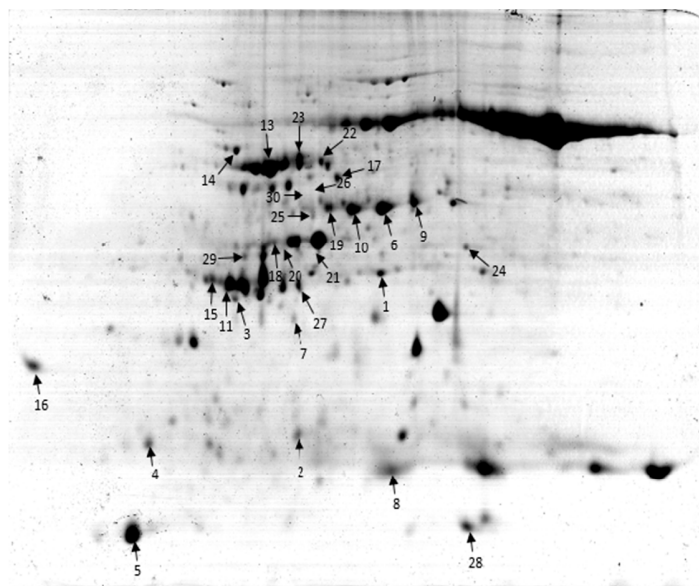


**Figure S3:** Representative 2-DE gel electrophoresis images from the leaf total proteins of WT and PP2C9TL, sampled at 10 DAF under control N treatment.

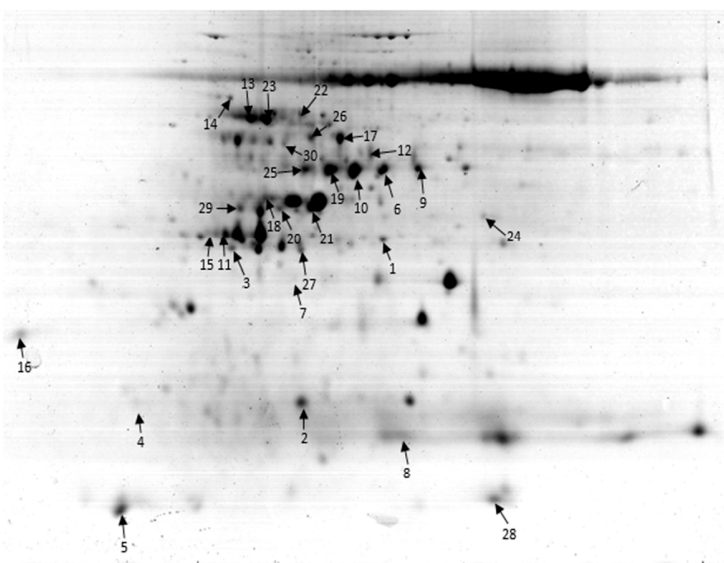




**Figure S4:** Representative 2-DE gel electrophoresis images from the leaf total proteins of WT and PP2C9TL, sampled at 10 DAF under low N treatment.

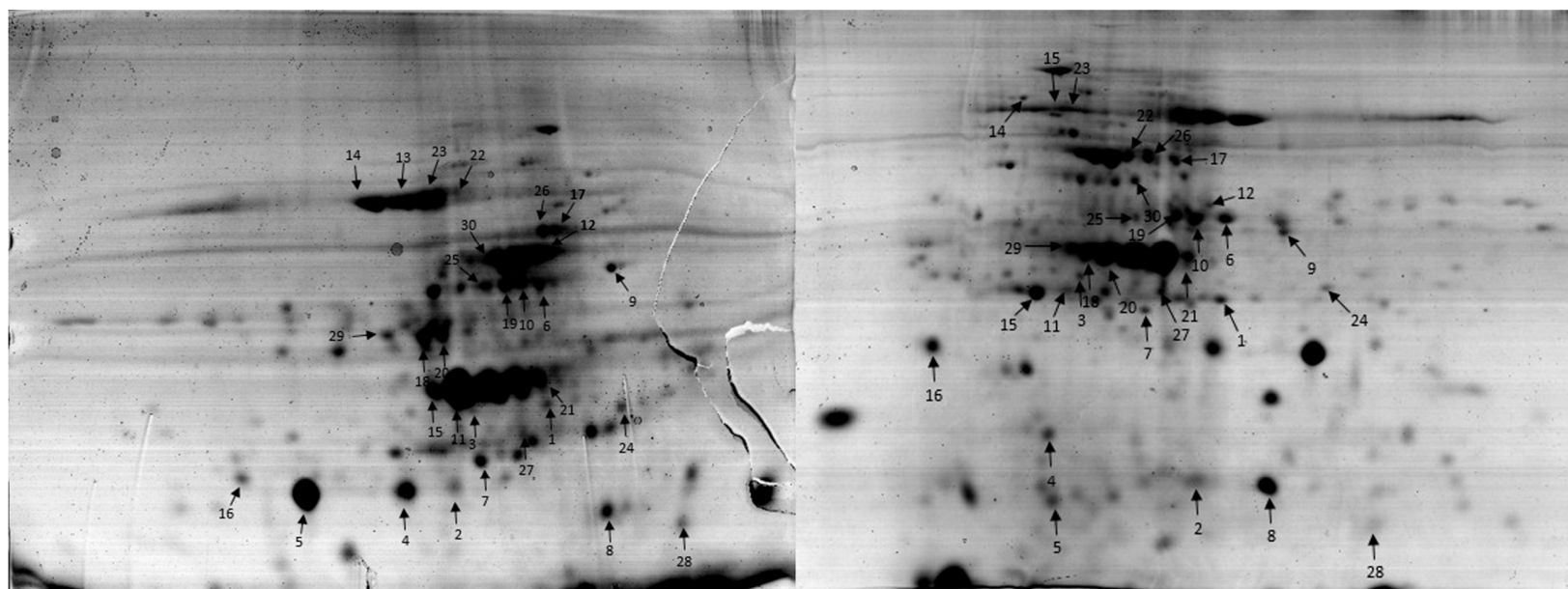


**WT Low**



**PP2C Low**

**Figure S5:** Representative 2-DE gel electrophoresis images of differentially expressed proteins of WT and PP2C9TL leaves, sampled at 10 DAF under low N treatment.



**WT Control**

**PP2C Control**

**Figure S6:** Representative 2-DE gel electrophoresis images of differentially expressed proteins of WT and PP2C9TL leaves, sampled at 10 DAF under control N treatment.