

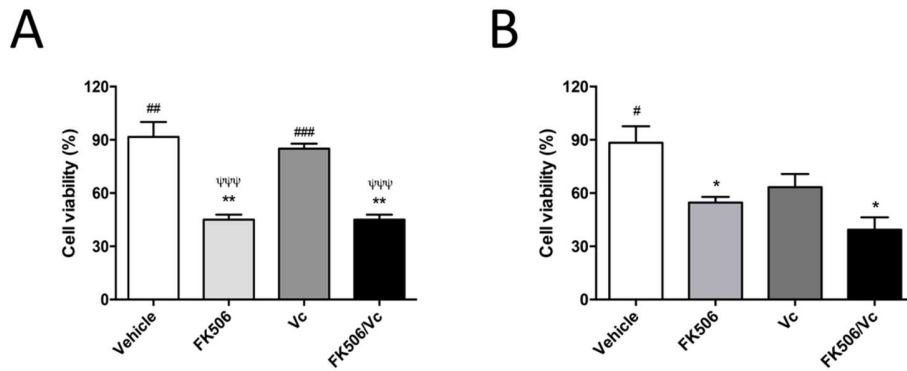
# FK506 Attenuates the MRP1-Mediated Chemo-Resistant Phenotype in Glioblastoma Stem-Like Cells

Ángelo Torres, Valentina Arriagada, José Ignacio Erices, María de los Ángeles Toro, José Dellis Rocha, Ignacio Niechi, Cristian Carrasco, Carlos Oyarzún and Claudia Quezada

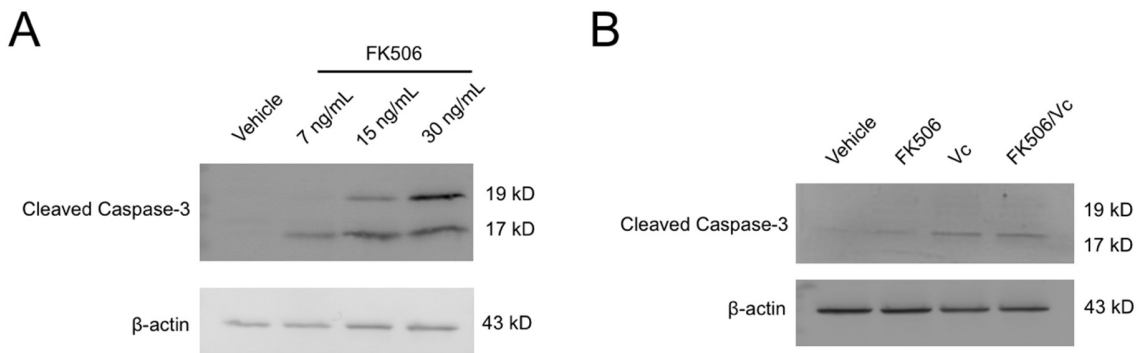
**Table S1**

List of primers used for RT-qPCR

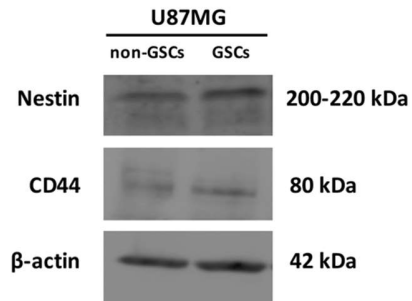
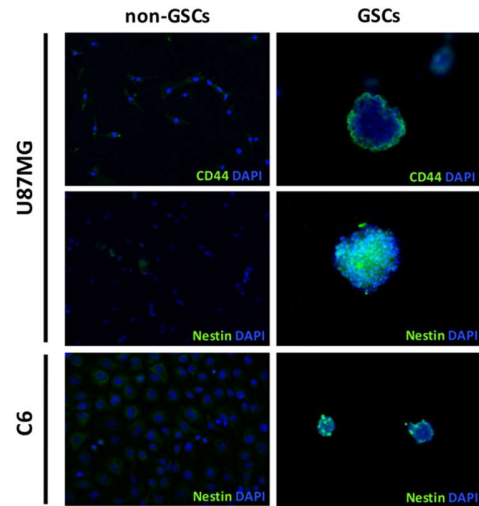
<b>Gene</b>	<b>Forward primer</b>	<b>Reverse primer</b>
<b>MRP1 human</b>	5' GGACTTTCGTGTGCTCCTGA 3'	5' AGGTCAAGCTTTCCTGTACTG 3'
<b>MRP1 rat</b>	5' TGAACCATGAGTGTGCAGAA 3'	5' TCACACCAAGCCAGCATCCT 3'
<b>ACTB human</b>	5' GGGGTCTTGAAGGTCTCA 3'	5' TGTCACCAACTGGGACGA 3'
<b>ACTB rat</b>	5' TGTCACCAACTGGGACGATA 3'	5' GGGGTCTTGAAGGTCTCAA 3'



**Figure S1.** Cell viability measured by trypan blue exclusion assay in U87MG (A) and C6 (B) GSCs treated with vehicle (DMSO), FK506 (15 ng/mL) and/or Vincristine (Vc; 0,1  $\mu$ M). The graph represents the percentage of cell viability using vehicle as calibrator. Graphs represent the mean  $\pm$  S.D. \*P < 0.05 and \*\*P < 0.01 versus vehicle. #P < 0.05, ###P < 0.01 and ####P < 0.001 versus FK506.  $\psi\psi\psi$  P < 0.001 versus Vc. n = 3.



**Figure S2. A** Cleaved caspase-3 in U87MG-GSCs treated with vehicle (DMSO) and FK506 (7, 15 and 30 ng/mL). **B** Cleaved caspase-3 in C6-GSCs treated with vehicle (DMSO), FK506 (15 ng/mL) and/or Vincristine (Vc; 0,1  $\mu$ M).  $\beta$ -actin expression was used as normalizer in A) and B).

**A****B**

**Figure S3.** Stem cells markers expression in non-GSCs and GSCs of U87MG and C6 cell lines. **A** Expression of Nestin and CD44 in U87MG non-GSCs and GSCs by western blot.  $\beta$ -actin expression was used as normalizer. **B** Immunocytofluorescence of CD44 and Nestin in non-GSCs and GSCs of U87MG and C6 cell lines. A secondary antibody Alexa 488 (green) was used to detect CD44 and Nestin expression. DAPI (blue) stain was used as counterstain of nuclei. Magnification 200x.