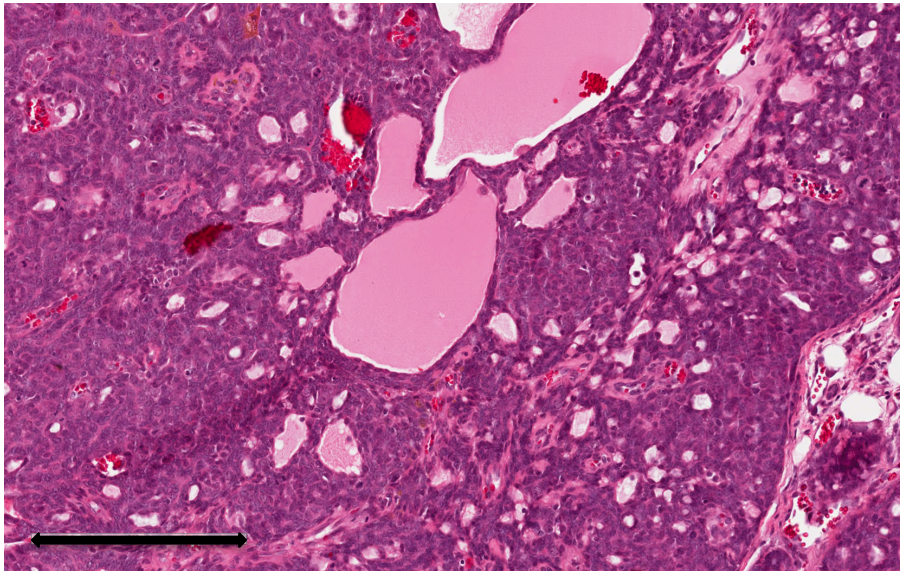
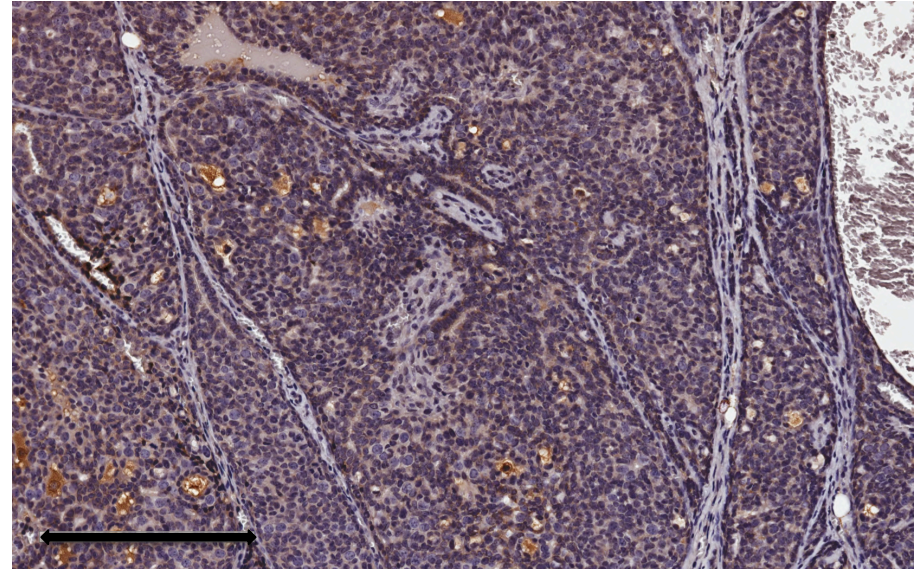


## Supplementary Figure 1:

A.



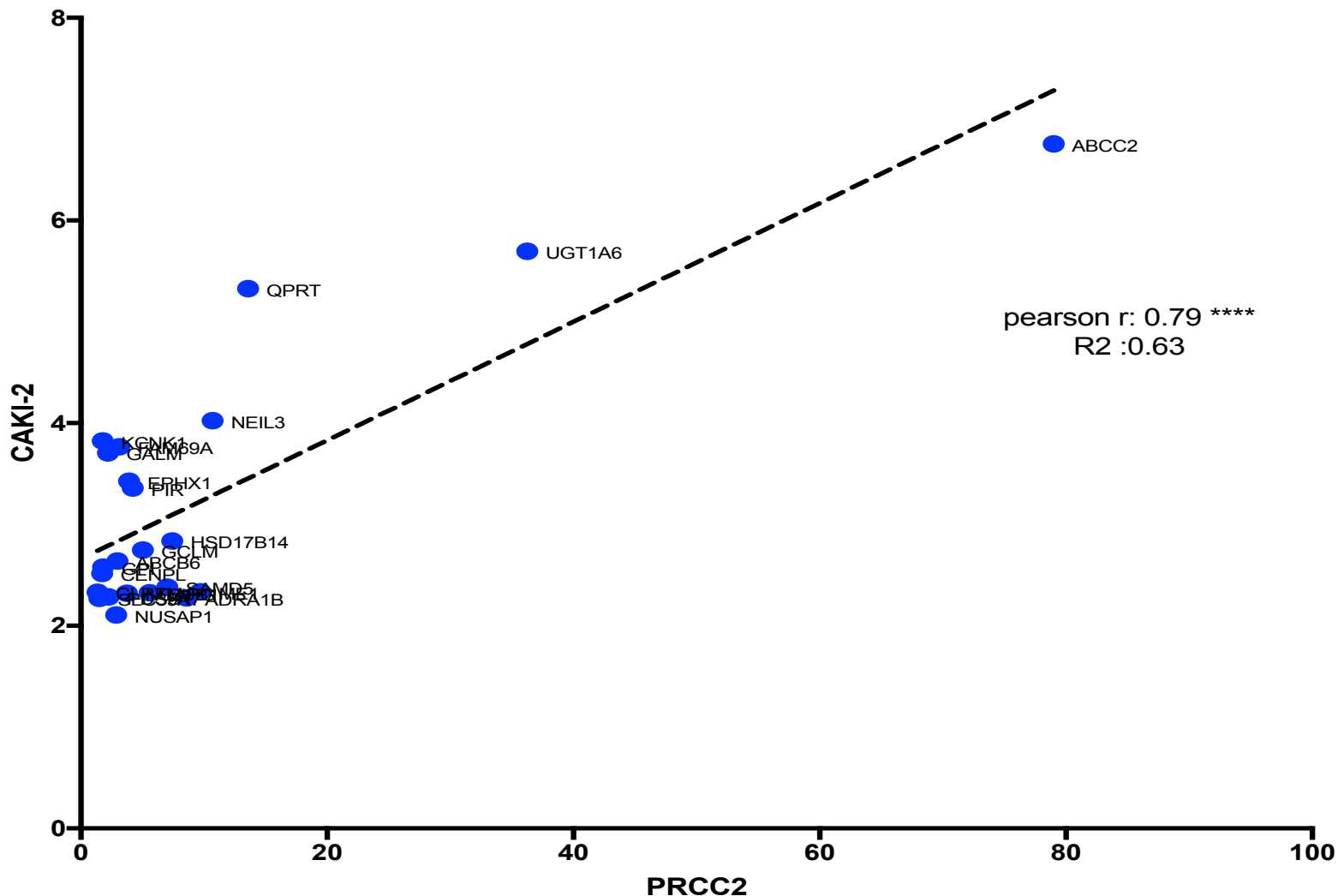
B.



Supplementary Figure 1. The CAL-54 RCC cell line represents PRCC1. A) Histologic examination of sections of these cells xenografted in mice shows tubulo-papillary with small cells, scant cytoplasm and inconspicuous nucleoli consistent with PRCC1 morphology, B). The cells stained negative for ABCC2 IHC also consistent with PRCC1 tumors. Scale bar = 200  $\mu$ m

## Supplemental Figure 2:

### Correlation of top matched genes



Supplementary Figure 2. The CAKI-2 cell line represents PRCC2. CAKI-2 shows highly significant positive correlation with PRCC2 on top differentially expressed genes.

**Supplementary Table 1:** Histological examination of mice tumor models

Treatment groups	Histological pattern	Average Necrosis	Local invasion	Metastasis (Lung)	Lung	Kidney	Liver
Untreated	Papillary architecture	2-5%	All locally invasive	25-30%	Mild to moderate inflammation	No Inflammation or necrosis	
MK571		2-5%		75%			
Sunitinib		14%		50%			
Everolimus		7.5%	75% locally invasive	25-30%	Severe acute inflammation in 50% of mice		
Sunitinib + MK571		20%	63% locally invasive	25-30%	Mild to moderate inflammation		