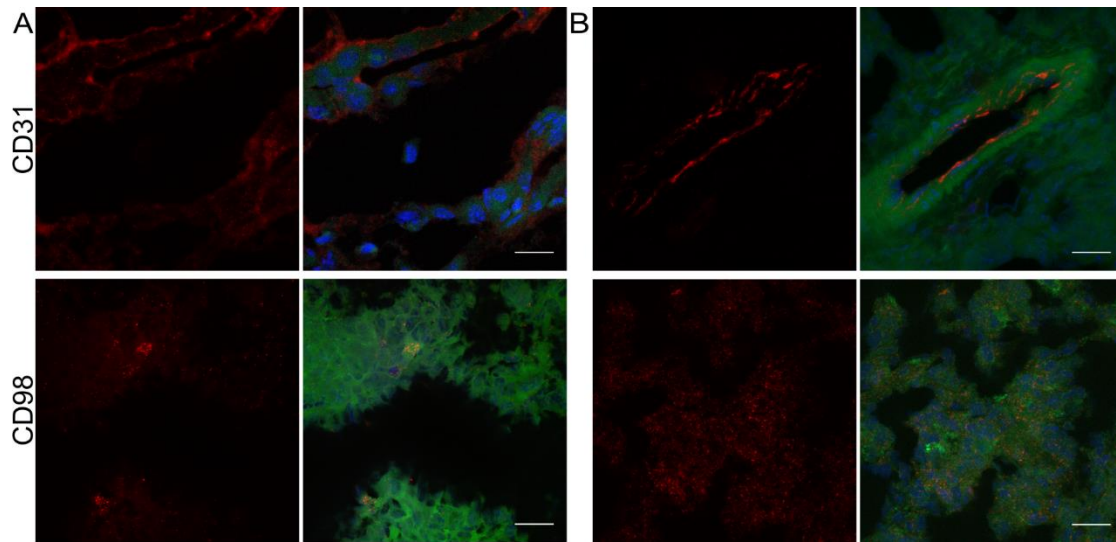


**SUPPLEMENTAL FIGURE 1:** Distribution of  $^{18}\text{F}$ -FDOPA and  $^{18}\text{F}$ -FDG uptake metrics during longitudinal treatment and imaging. (A) TACs for  $^{18}\text{F}$ -FDOPA (left) and  $^{18}\text{F}$ -FDG (right), with statistical significance calculated with 2-way ANOVA with repeated measures and Bonferroni comparisons post-test. (B) TLA (left) and TLG (right) were calculated for each week, as were (C) SUV<sub>Max</sub> and (D) total uptake from  $^{18}\text{F}$ -FDOPA and  $^{18}\text{F}$ -FDG TACs. Time points (weeks 1 and 2) were relative to pre-treatment baseline (week 3 post tumor implantation). Statistical significance for the individual comparisons was calculated using 1-way ANOVA with Tukey post-hoc test (\* $p$ <0.05, \*\* $p$ <0.01, \*\*\* $p$ <0.001).



**SUPPLEMENTAL FIGURE 2:** Immunohistochemistry of CD31 (top) and CD98 (bottom) for representative (A) untreated and (B) treated tumors with initialization of melphalan therapy at week 2 post tumor implantation. Expression for each stain was visualized as a maximum intensity projection (63X magnification; 20 $\mu$ m scale bar) separately and as a composite with GFP (green) and DAPI nuclear stain (blue).