

Increased TIMP-3 expression alters the cellular secretome through dual inhibition of the metalloprotease ADAM10 and ligand-binding of the LRP-1 receptor

Simone D. Scilabra, Martina Pighi, Veronica Pravata, Tobias Schatzl, Stephan A. Müller, Linda Troeberg, Stefan F. Lichtenthaler

Supplementary Information

Figure 2

TIMP3

HEK

HEK/T3

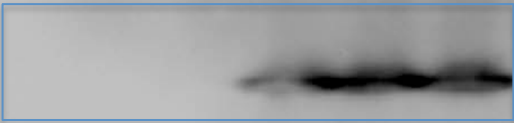
HEK

HEK/T3

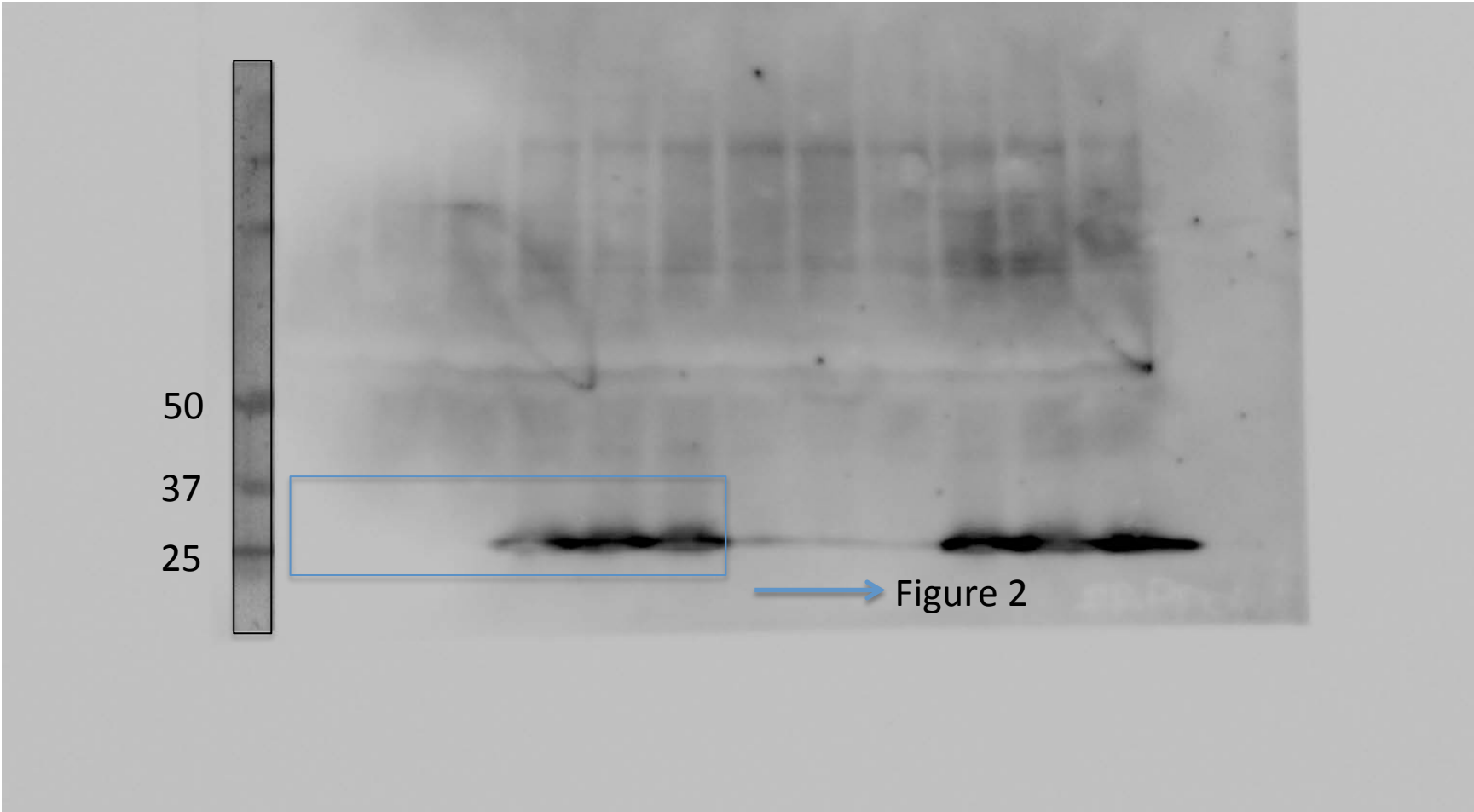
50

37

25

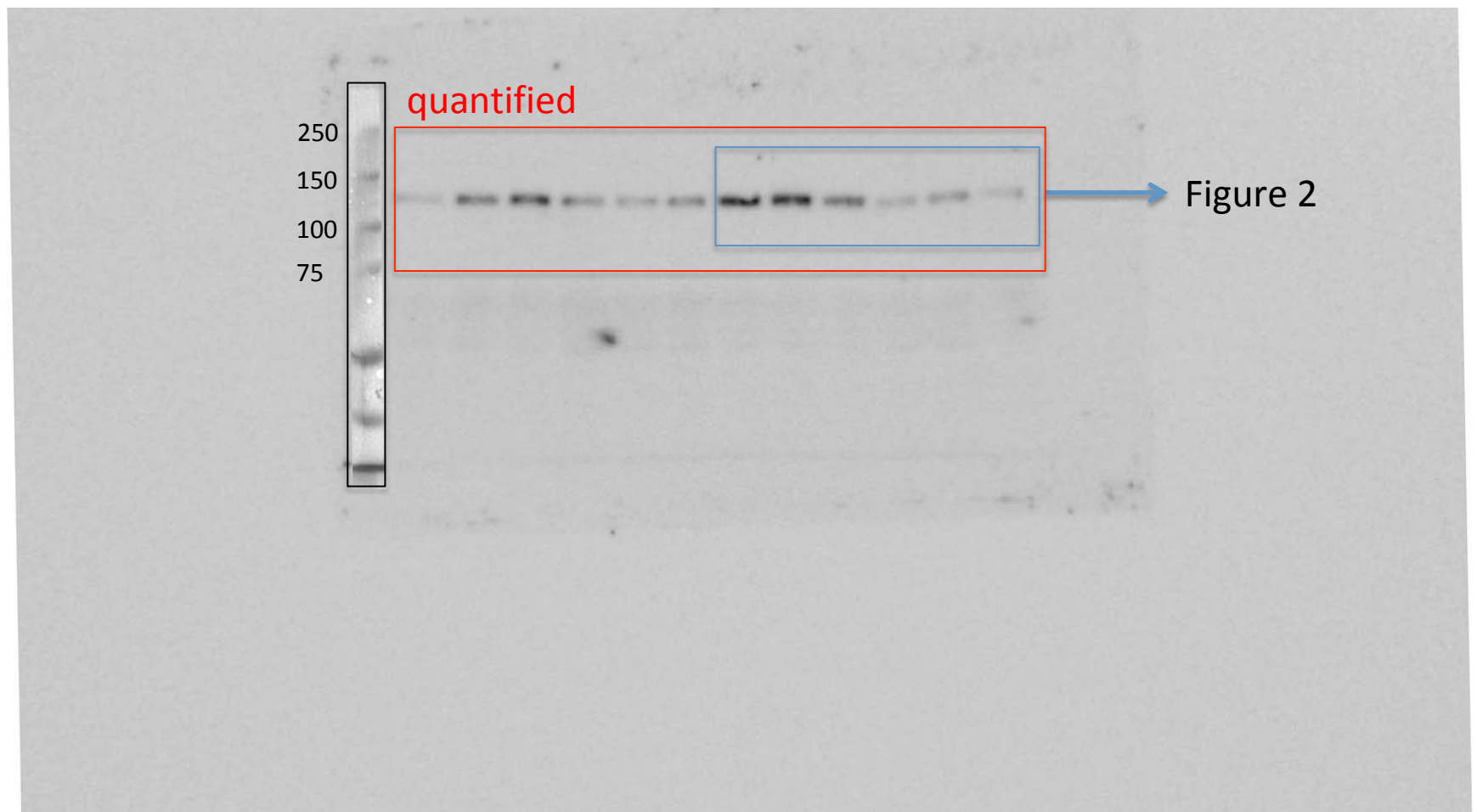


→ Figure 2



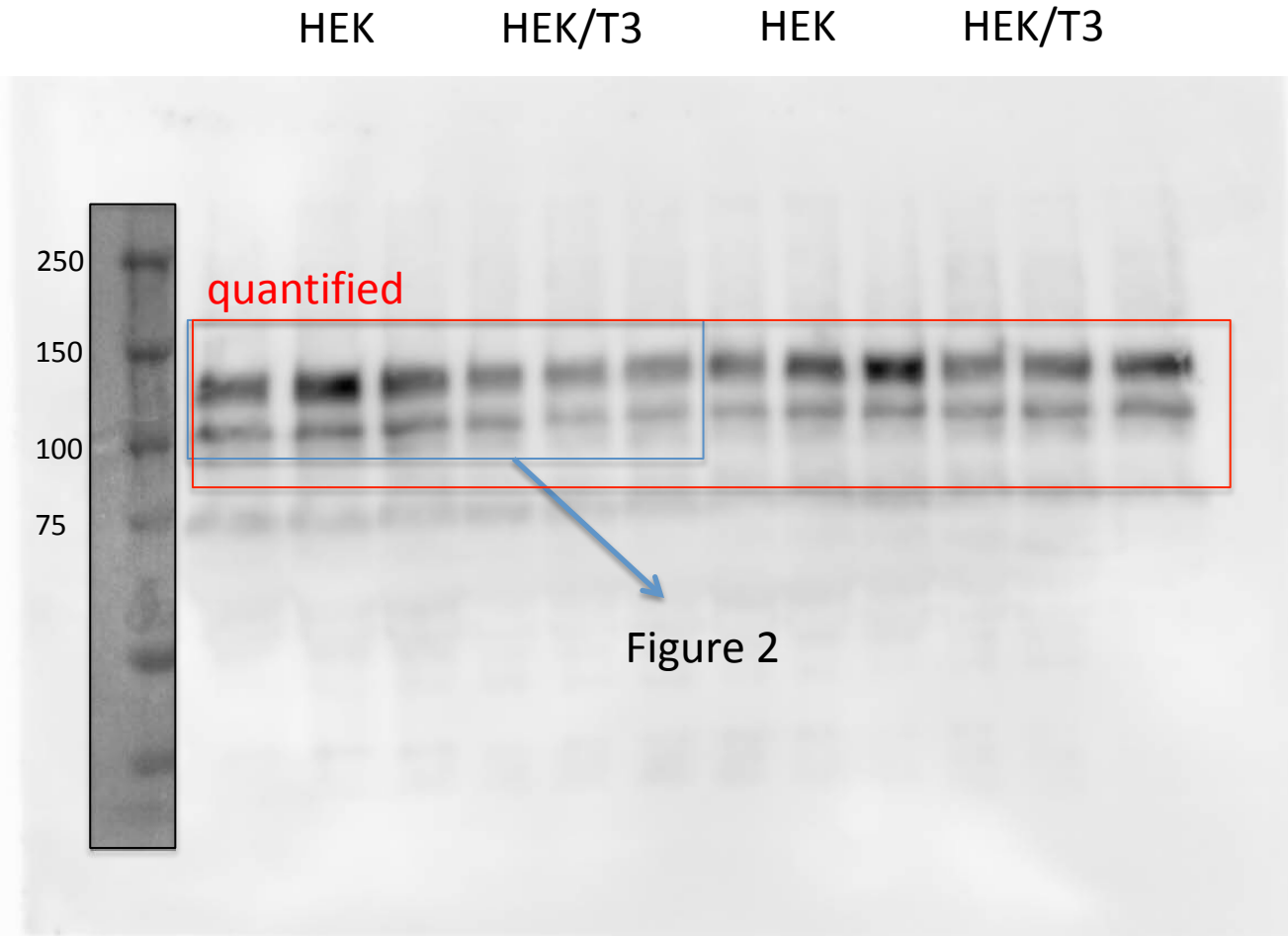
sAPPalpha

HEK HEK/T3 HEK HEK/T3

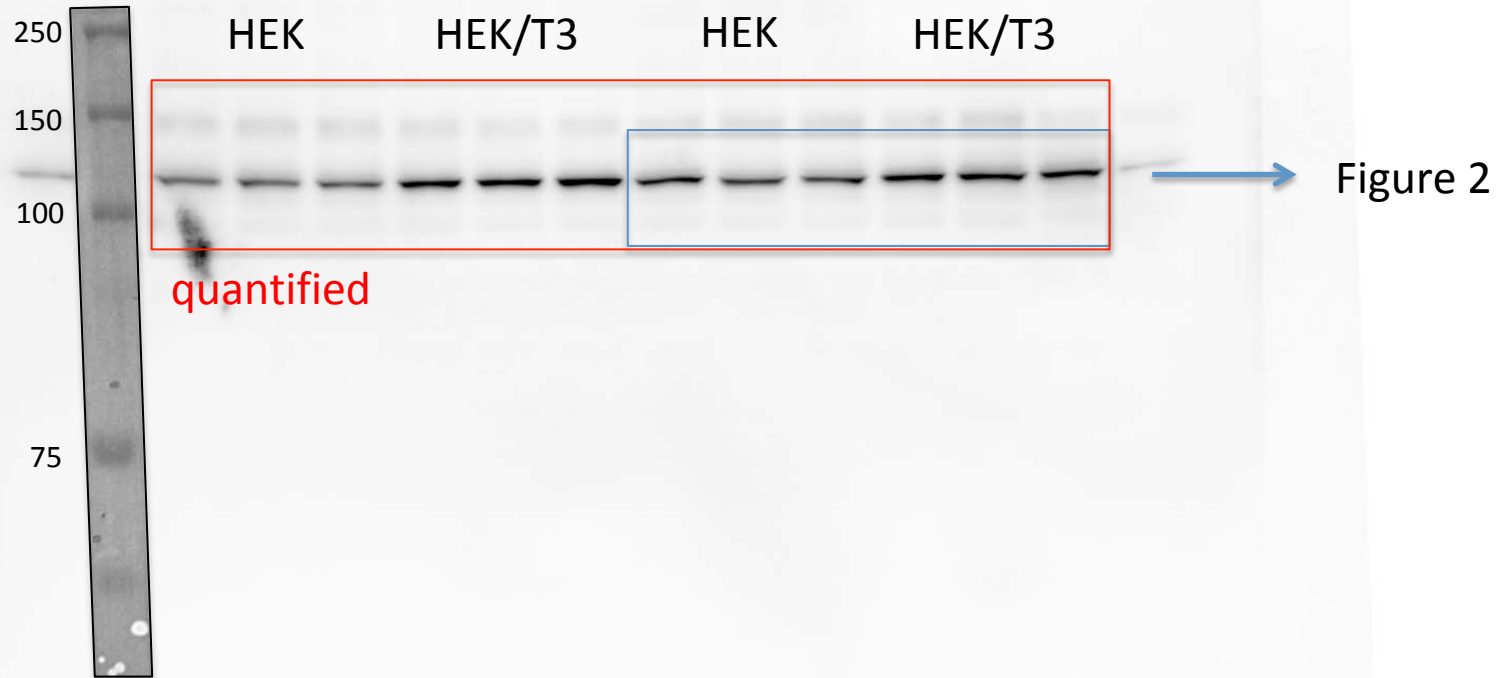


Blue square: bands in the MS. Red square: bands quantified for statistics

sAPP

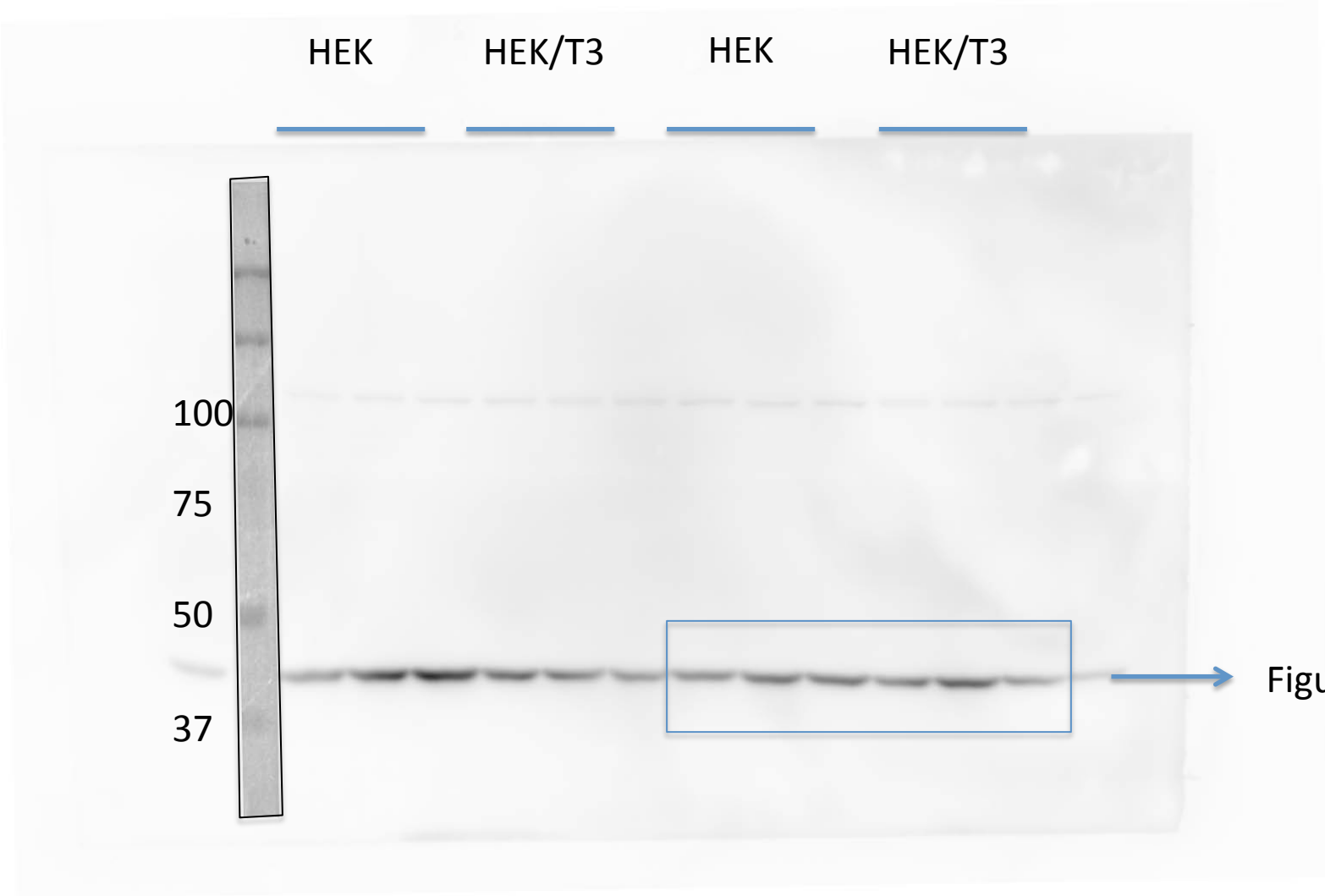


Blue square: bands in the MS. Red square: bands quantified for statistics

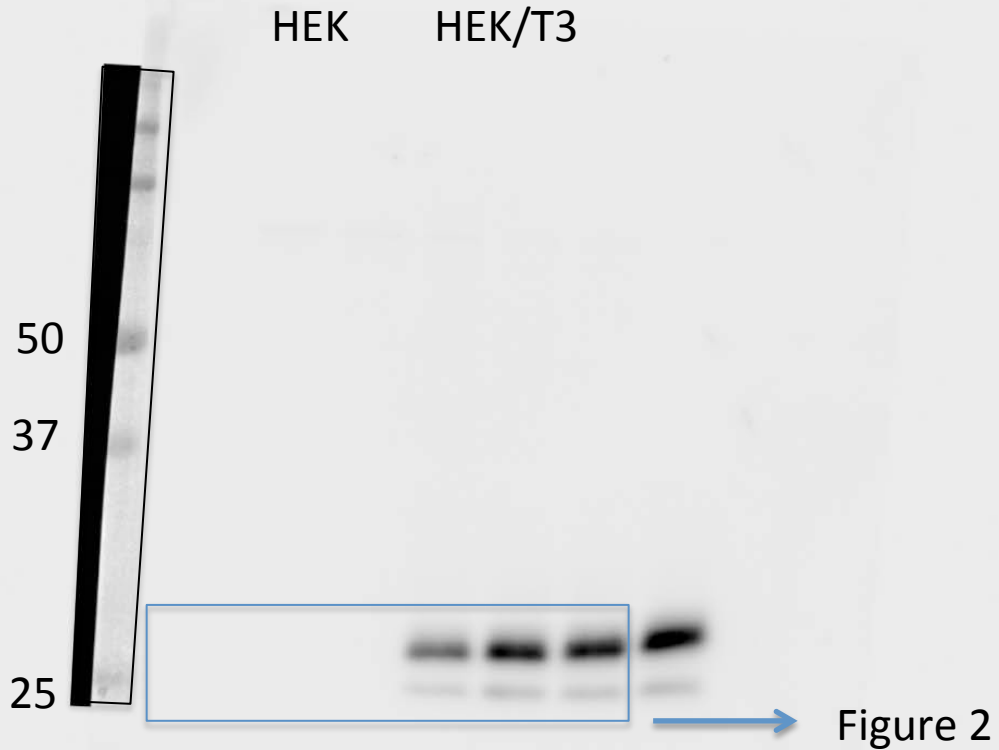


Blue square: bands in the MS. Red square: bands quantified for statistics

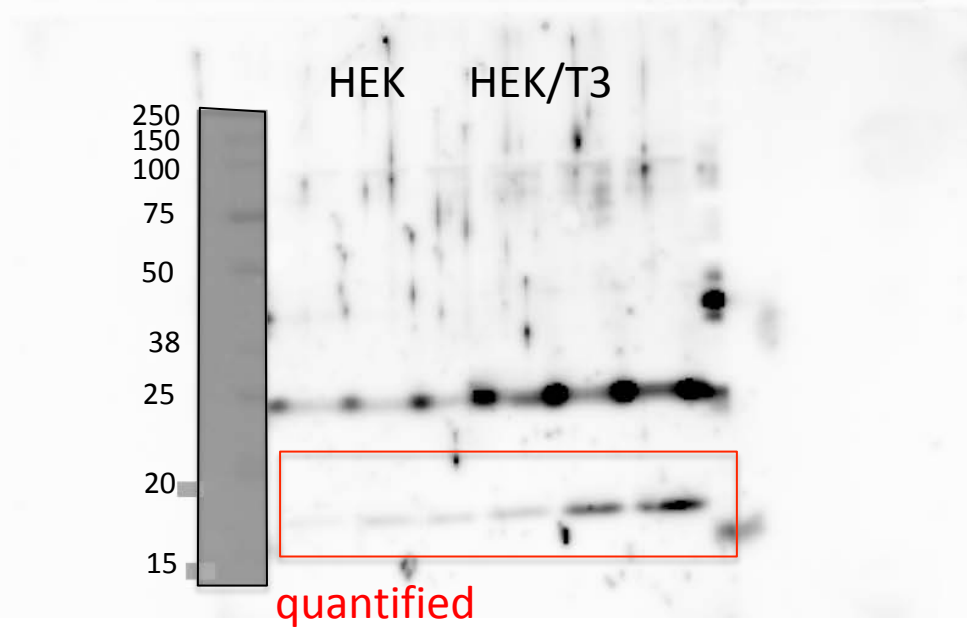
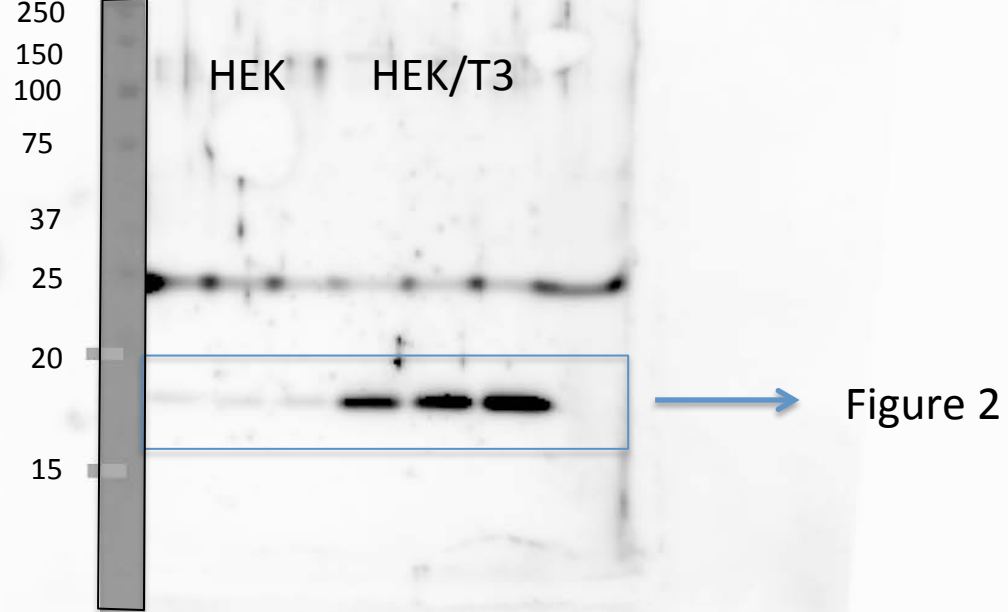
actin



TIMP3

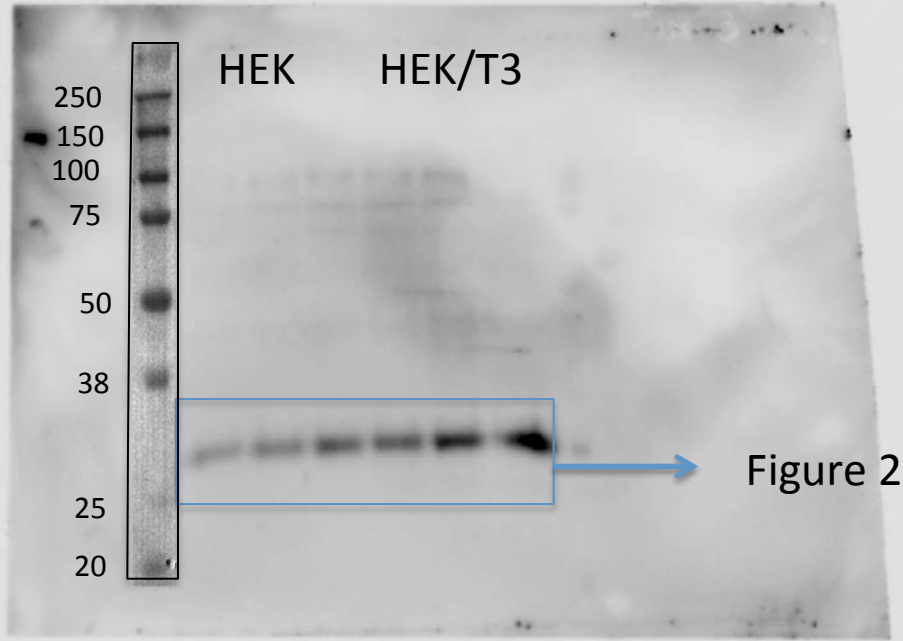


MIF



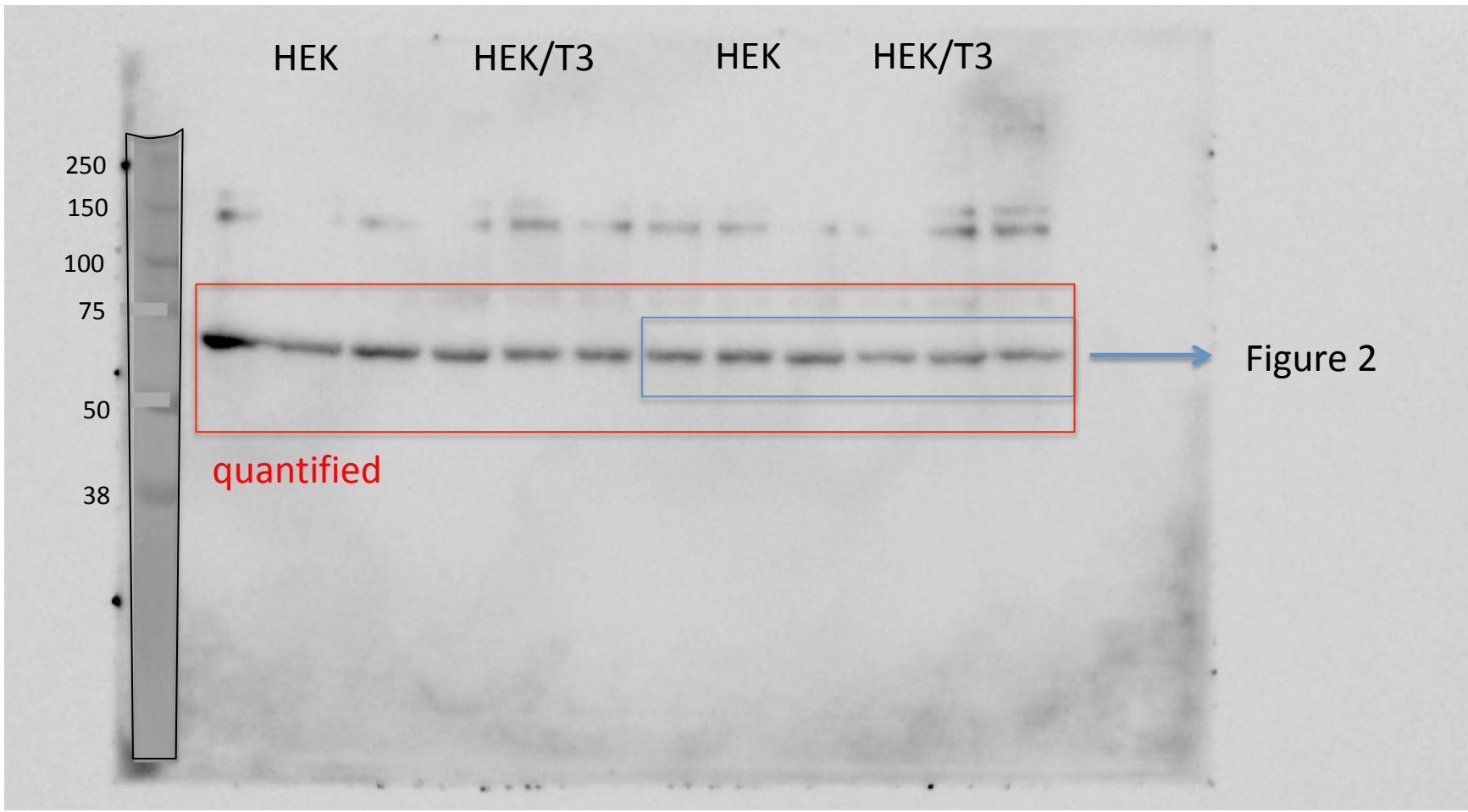
Blue square: bands in the MS. Red square + Blue square: bands quantified for statistics

TIMP1



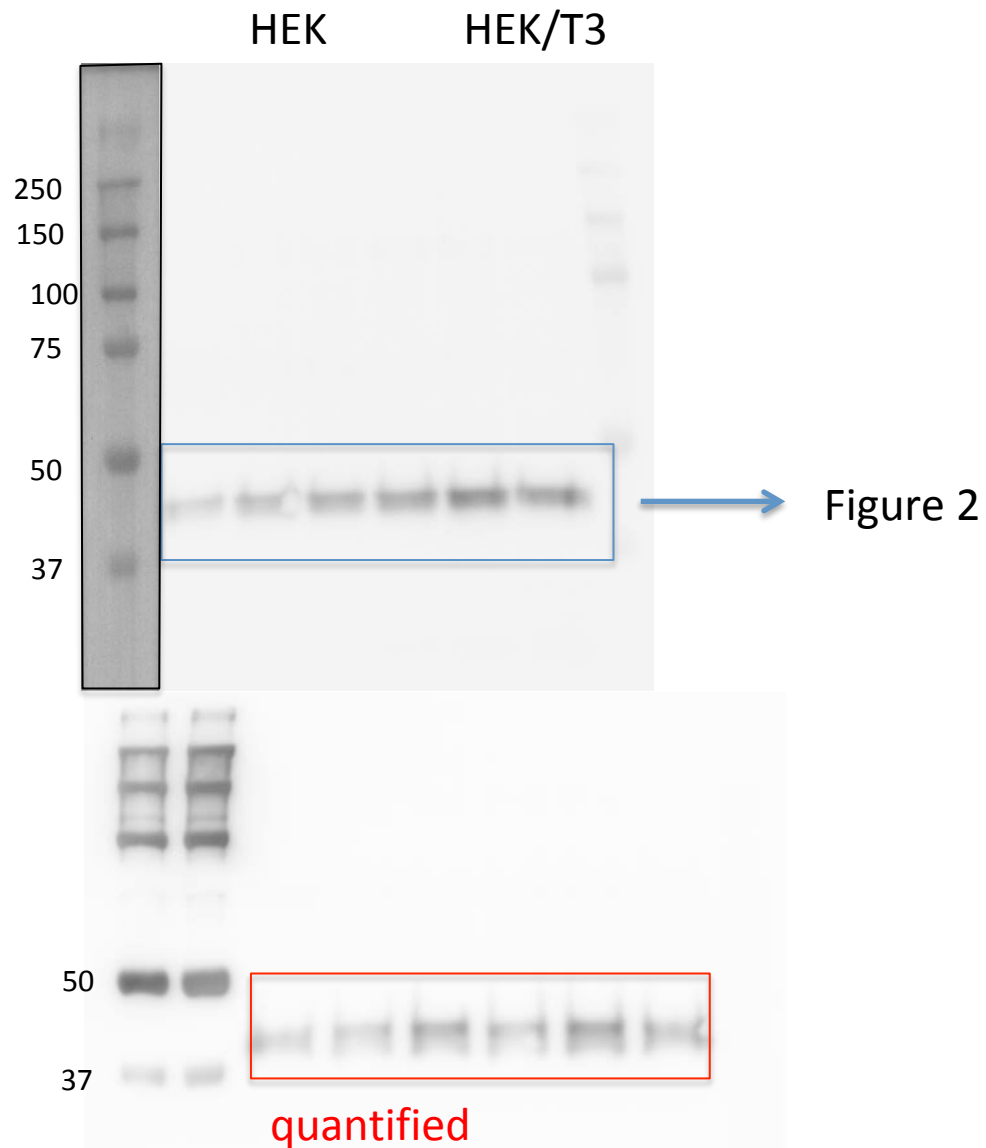
Blue square: bands in the MS. Red square + Blue square: bands quantified for statistics

MMP1



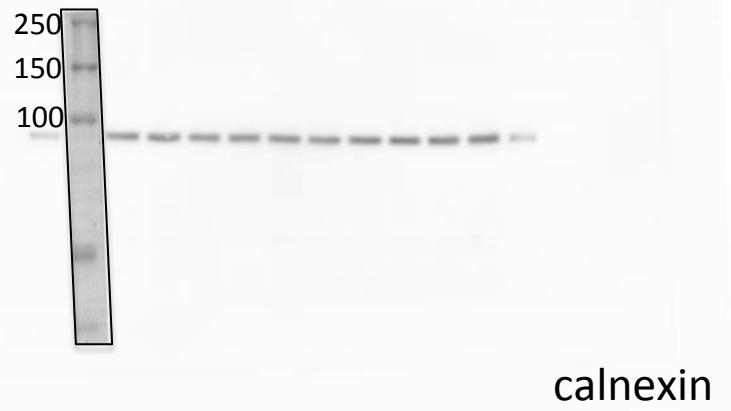
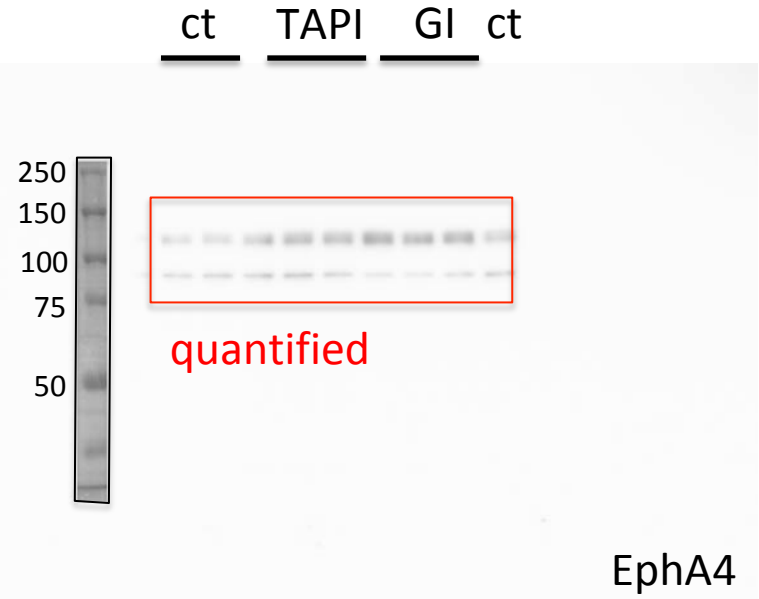
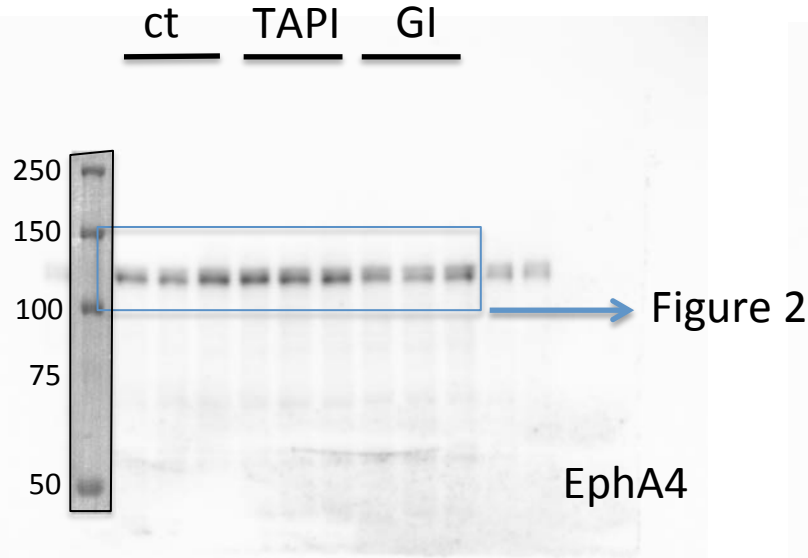
Blue square: bands in the MS. Red square: bands quantified for statistics

SPARC



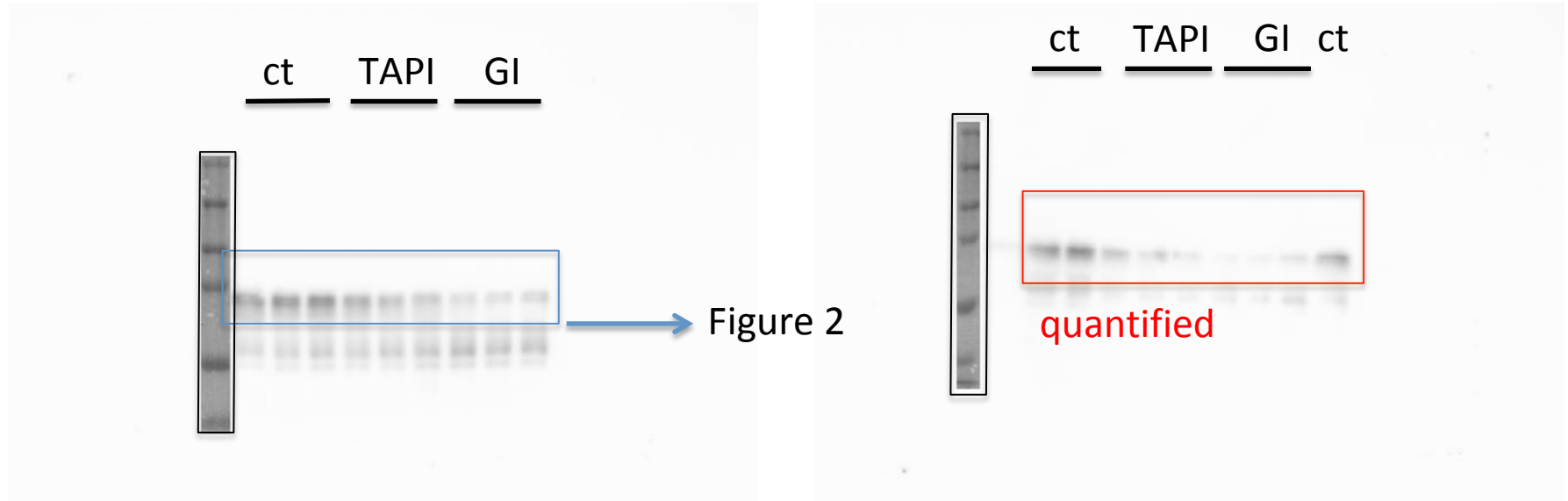
Blue square: bands in the MS. Red square + Blue square: bands quantified for statistics

EphA4 FL



Blue square: bands in the MS. Red square + Blue square: bands quantified for statistics

sEphA4



Blue square: bands in the MS. Red square + Blue square: bands quantified for statistics

Figure 3

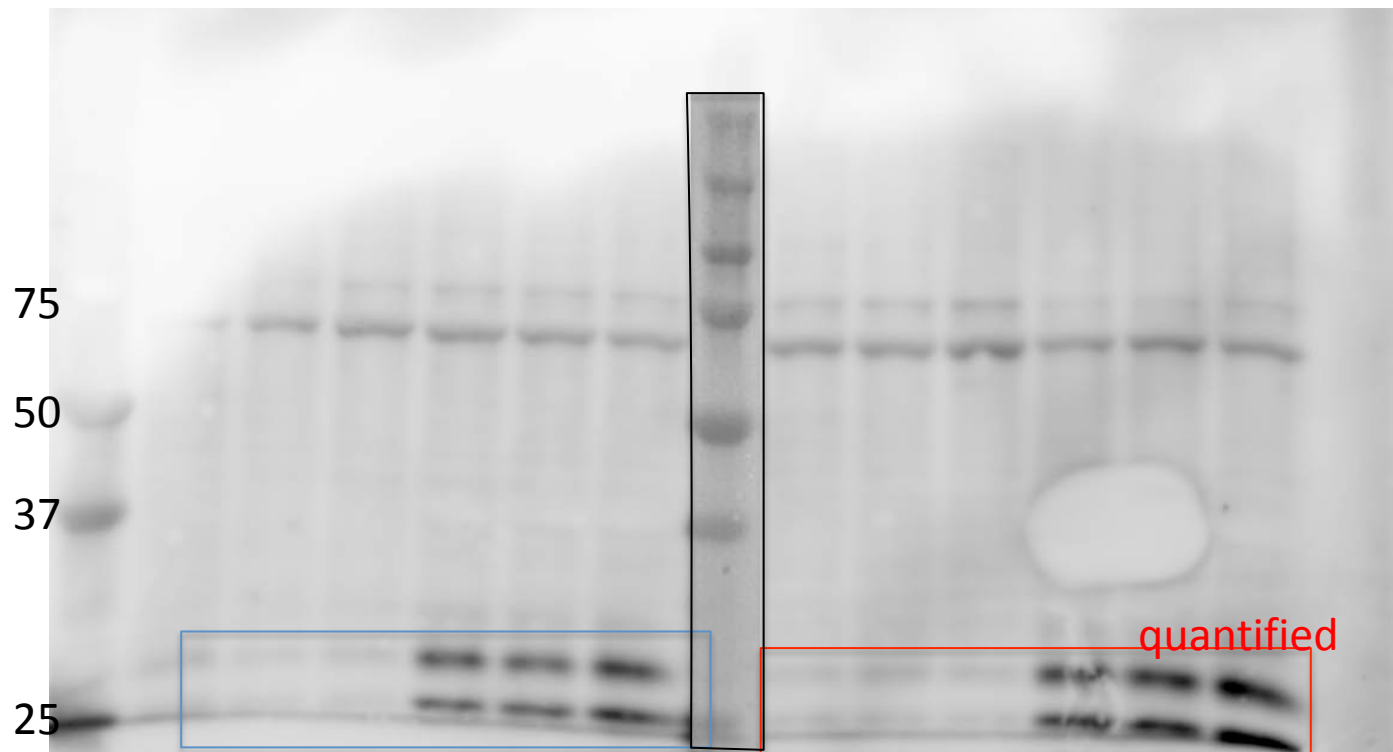
TIMP3

ct

RAP

ct

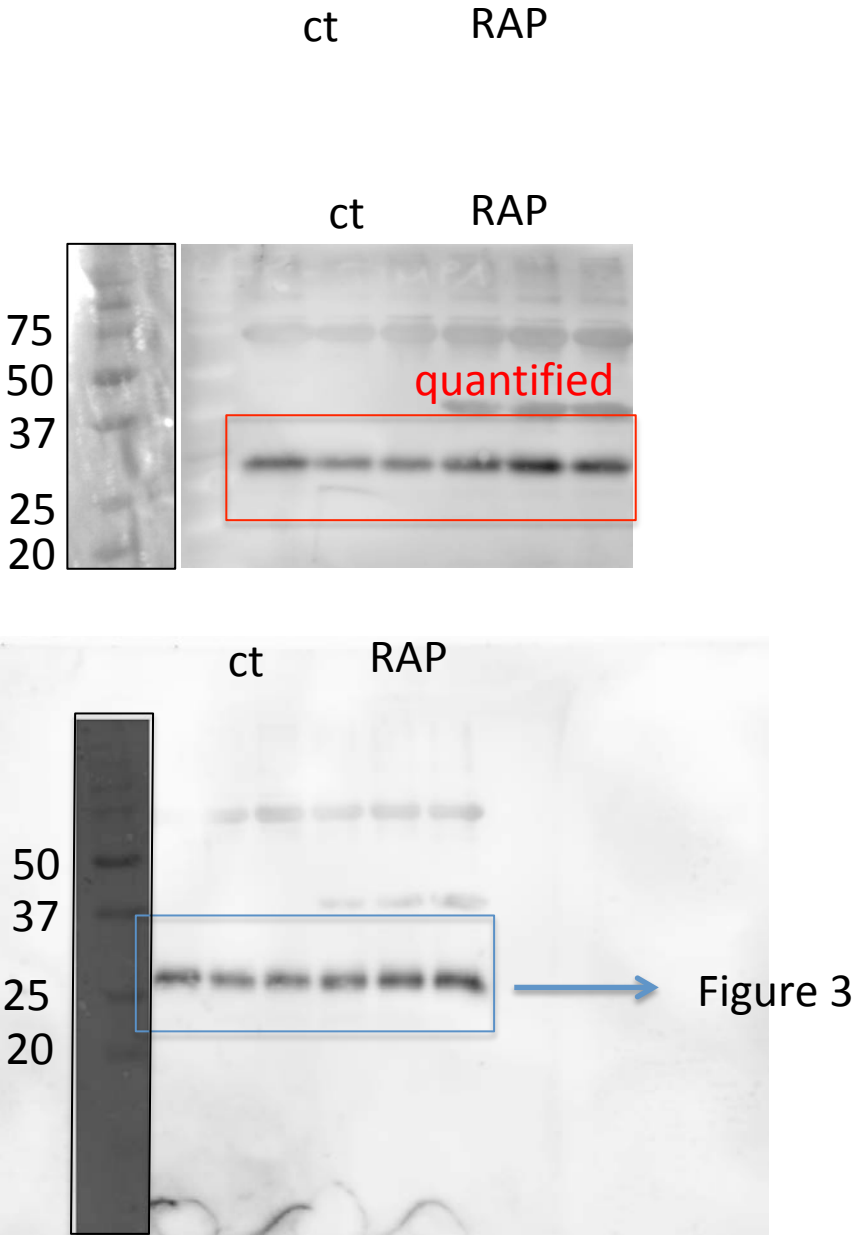
RAP



→ Figure 3

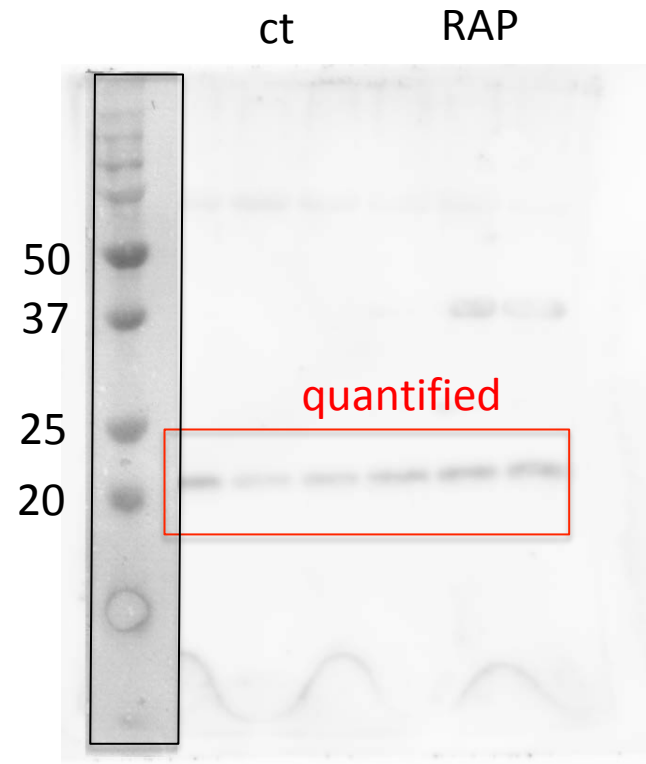
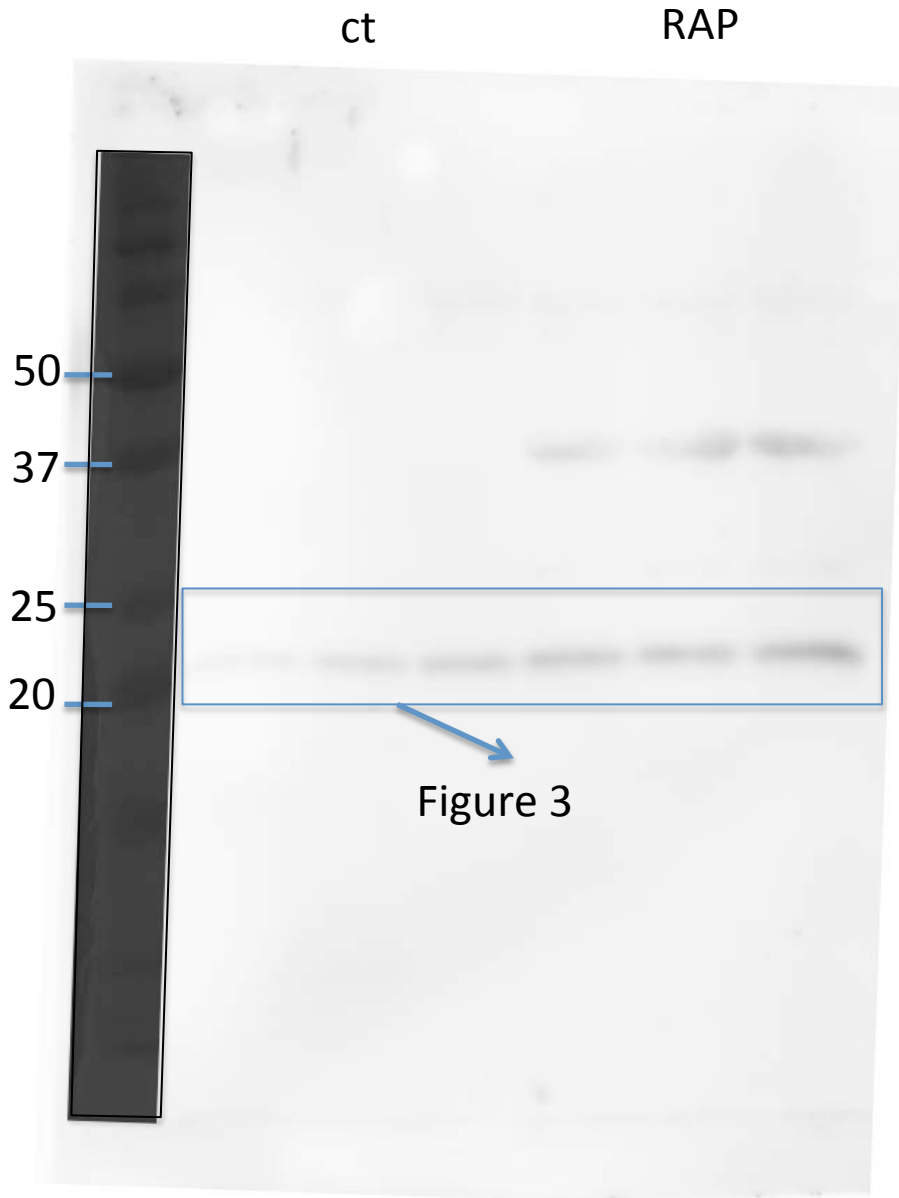
Blue square: bands in the MS. Red square + Blue square: bands quantified for statistics

TIMP1



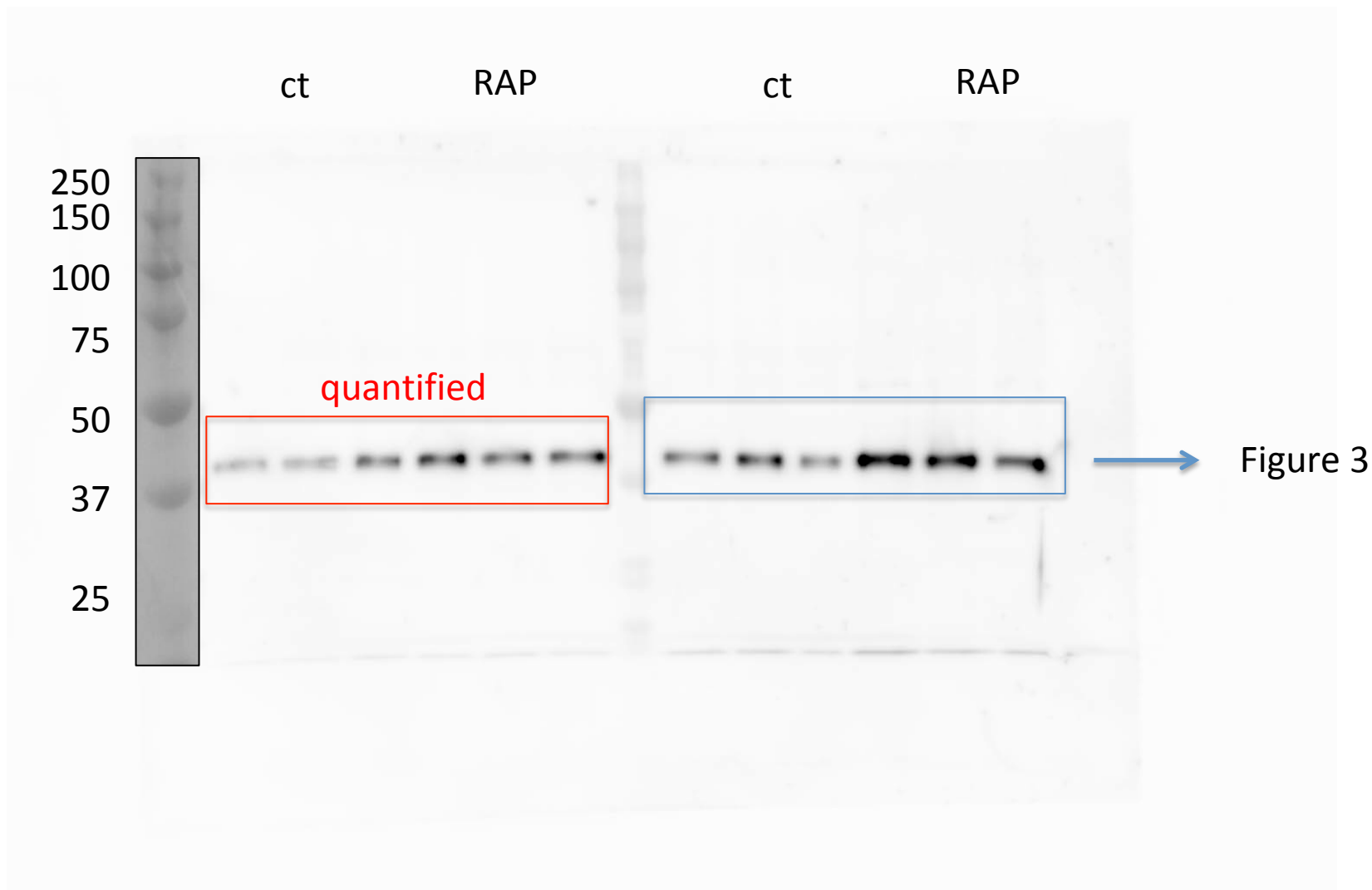
Blue square: bands in the MS. Red square + Blue square: bands quantified for statistics

TIMP2

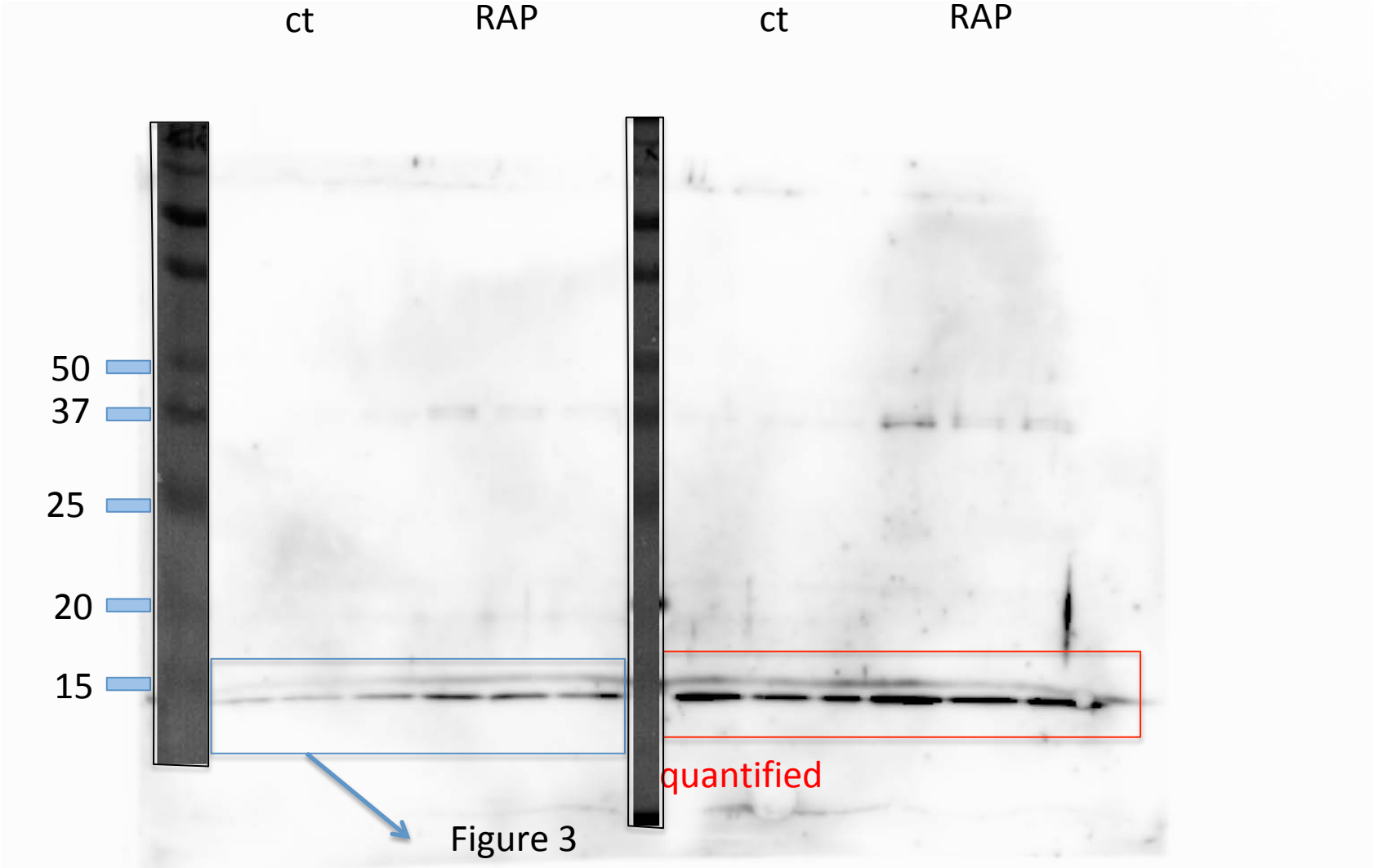


Blue square: bands in the MS. Red square + Blue square: bands quantified for statistics

SPARC



Blue square: bands in the MS. Red square + Blue square: bands quantified for statistics



Blue square: bands in the MS. Red square + Blue square: bands quantified for statistics

Figure 5

sAPP

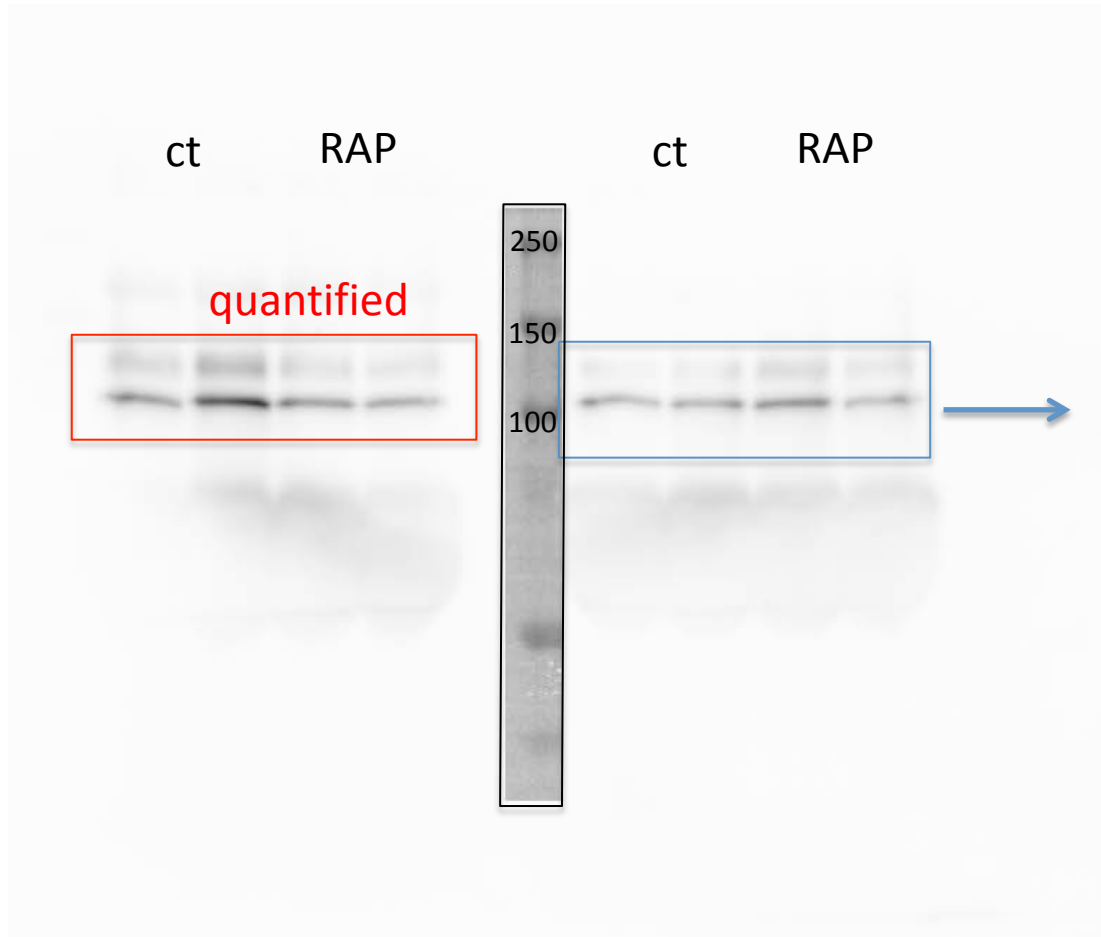
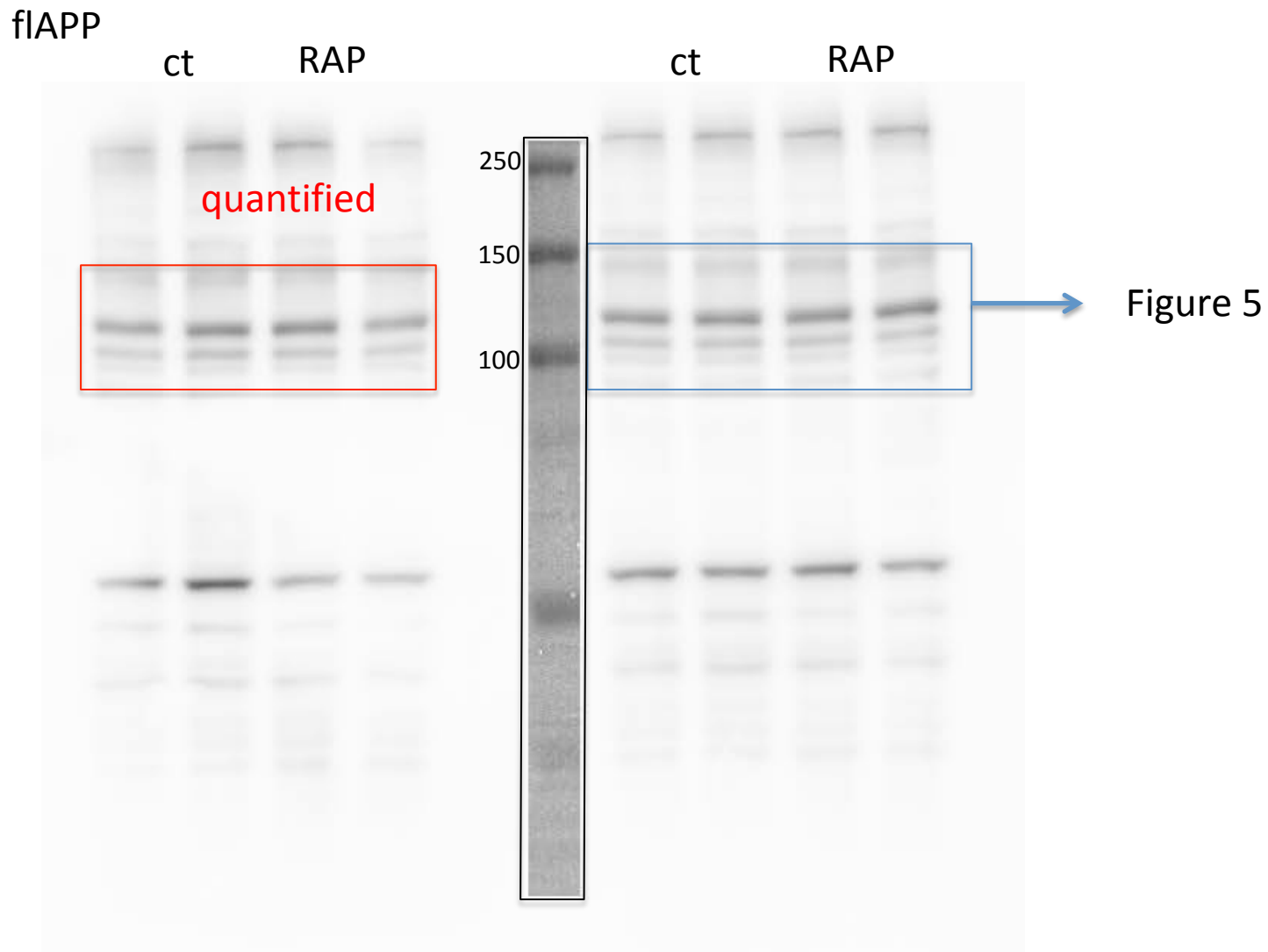


Figure 5

Blue square: bands in the MS. Red square + Blue square: bands quantified for statistics



Blue square: bands in the MS. Red square + Blue square: bands quantified for statistics

actin

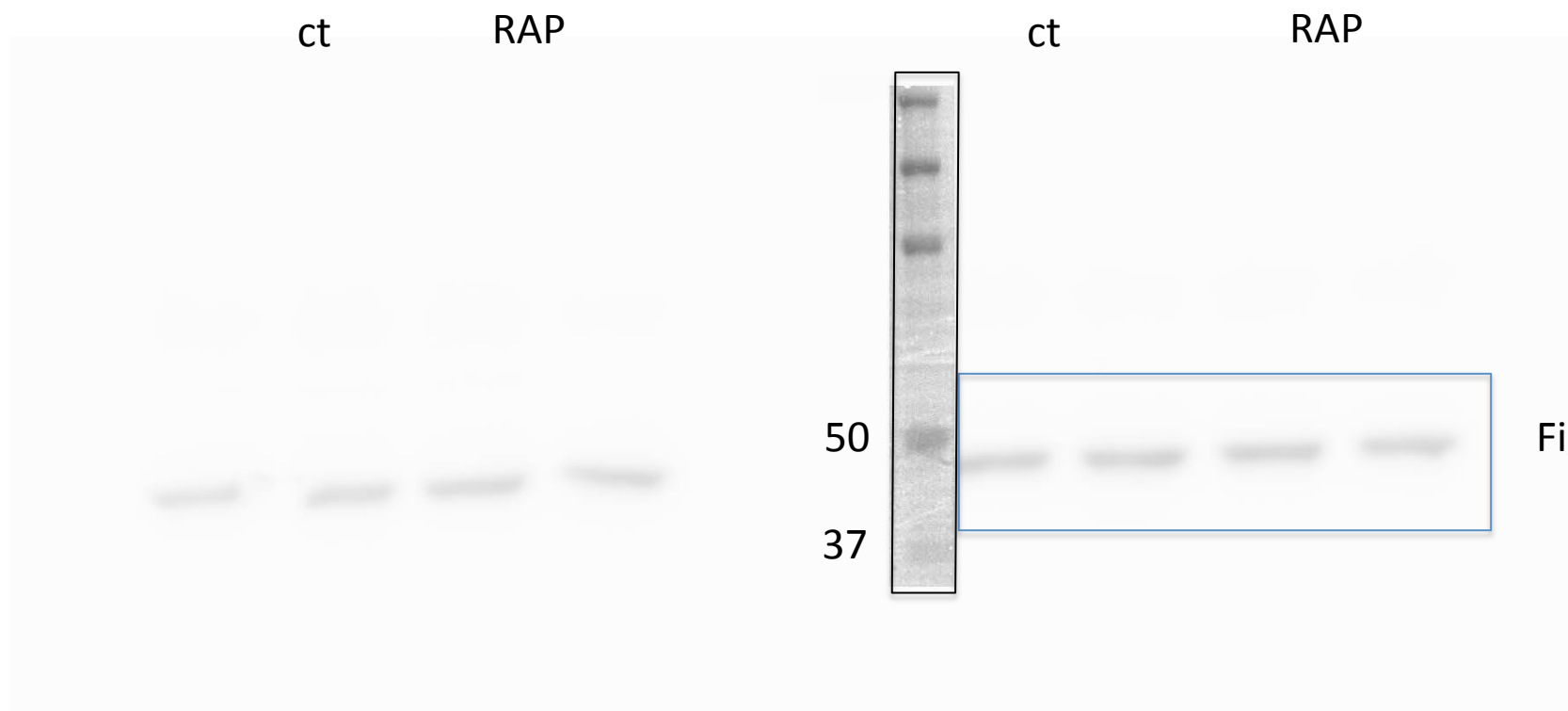


Figure 5

EphA4

CT RAP CT RAP

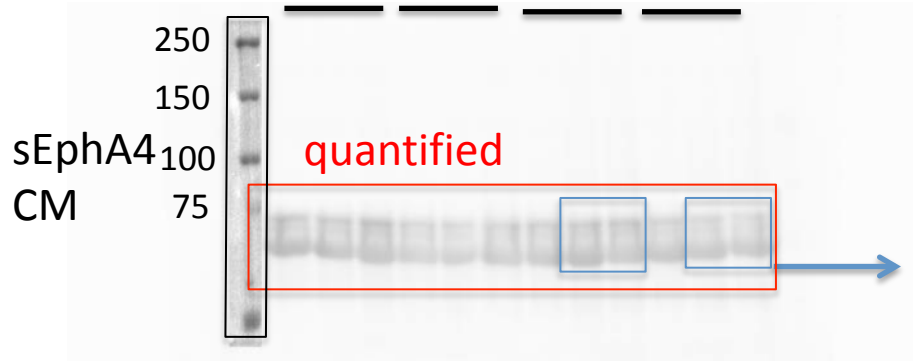


Figure 5

In the last version of the MS, the 2 bands that are not exactly next to each other, are clearly separated by a black line

flEphA4 lysates

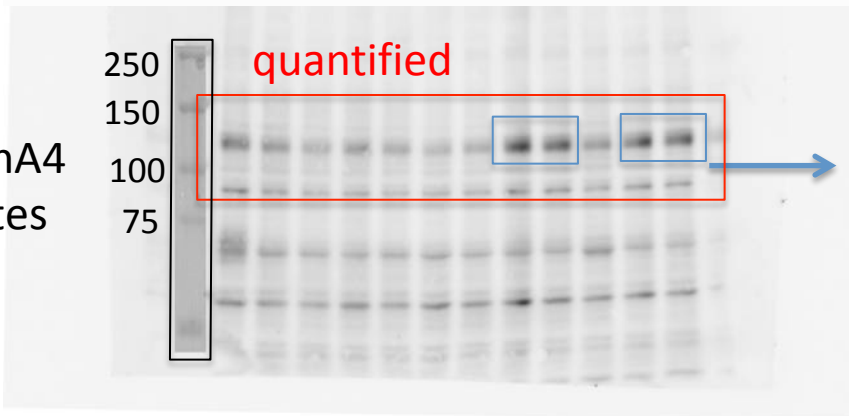


Figure 5



Figure 5

calnexin

Blue square: bands in the MS. Red square + Blue square: bands quantified for statistics