

Hizume Supplementary Fig. S6

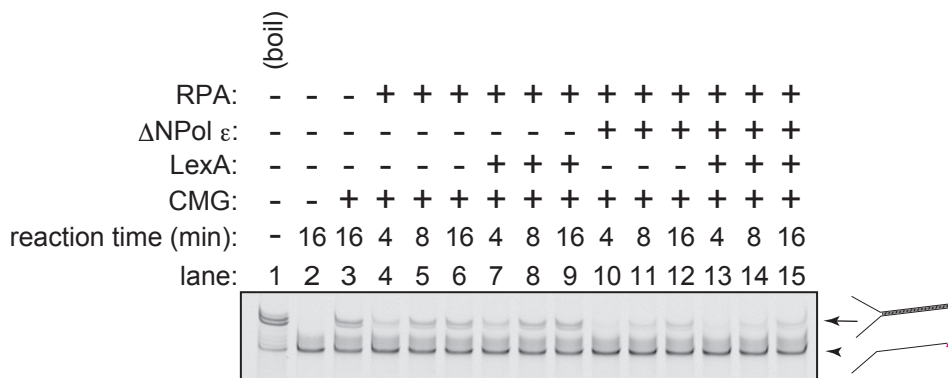


Figure S6. CMG helicase assay using forked substrate containing SOS-box. Using forked DNA substrate with SOS-box, the helicase assay was performed in the presence of the RPA, Pol ϵ -pol2 Δ N complex (Δ NPoI ϵ), and LexA, as indicated above the panels. CMG (200 fmol) was mixed with 0.8 fmol of the substrates and ATP γ S in the presence of 110 fmol of RPA, 57.6 fmol of LexA, and/or 21.6 fmol of Δ Pol ϵ . ATP was added, and a helicase reaction was then performed in its presence at 16°C for 4, 8, or 16 min, as indicated above the panels. The reaction was stopped by adding EDTA and sarkosyl, and was used for native PAGE analysis in TBE buffer. In the absence of Pol ϵ , LexA had little effect on CMG helicase activity (compare lanes 4–6 to lanes 7–9). In the presence of Pol ϵ , CMG activity was inhibited (lanes 10–12) and LexA slightly enhanced the inhibition (lanes 13–15).