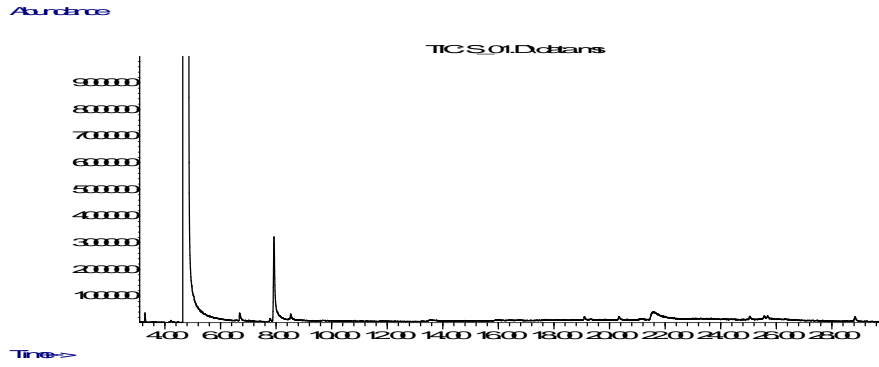
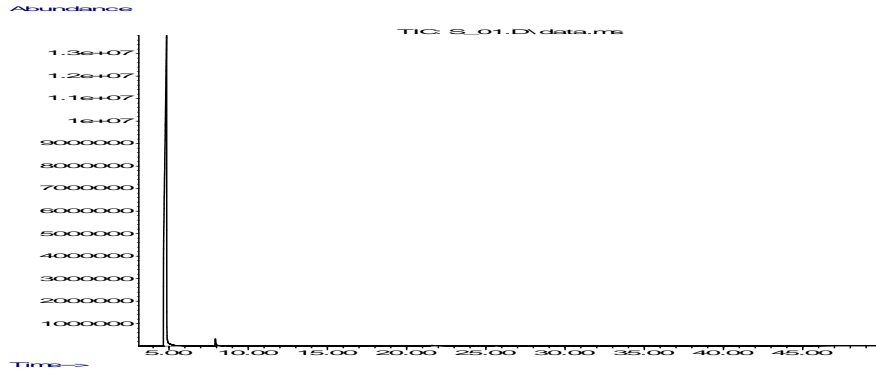
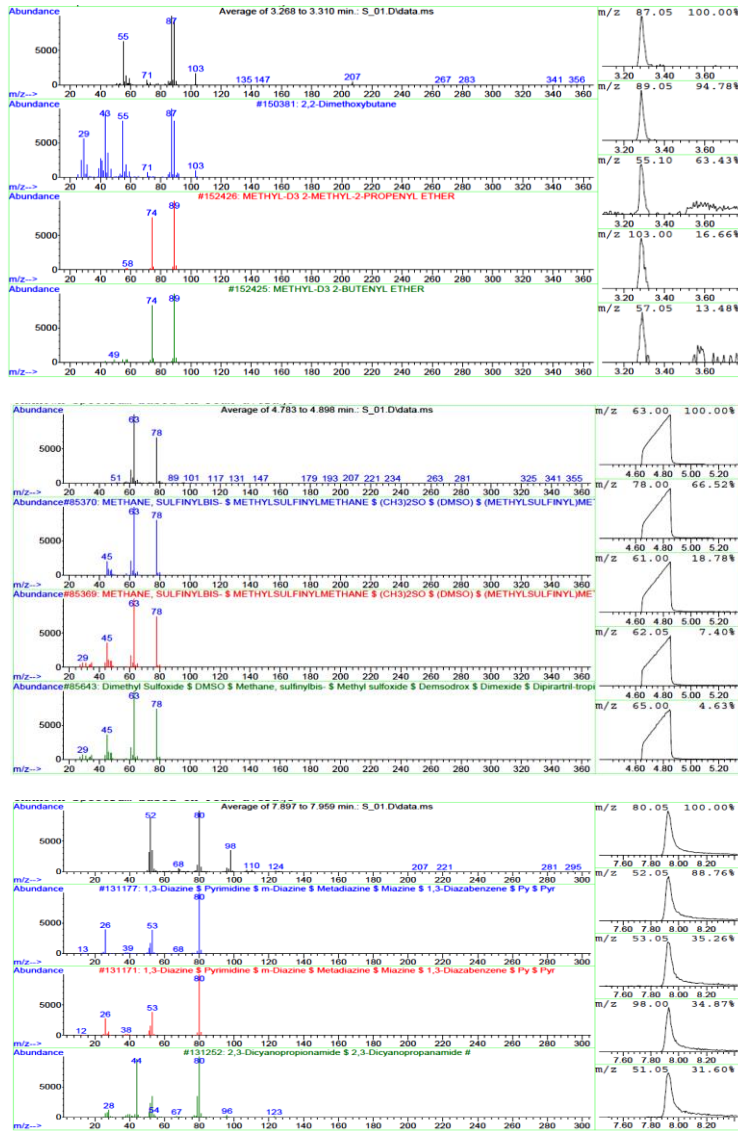


# Chinese cabbage methanol extract



Peak	R.T time	Type	Width	Area	Start time	End time
1	3.288	BB	0.043	530502	3.247	3.347
2	4.839	BB	0.111	1.166E+09	4.422	5.604
3	7.929	PB	0.064	14000713	7.862	8.337

Library report - C:\Database\W8N05ST.L



S3 Fig. GC-MS chromatogram of BRARP extract in methanol