

Figure S5

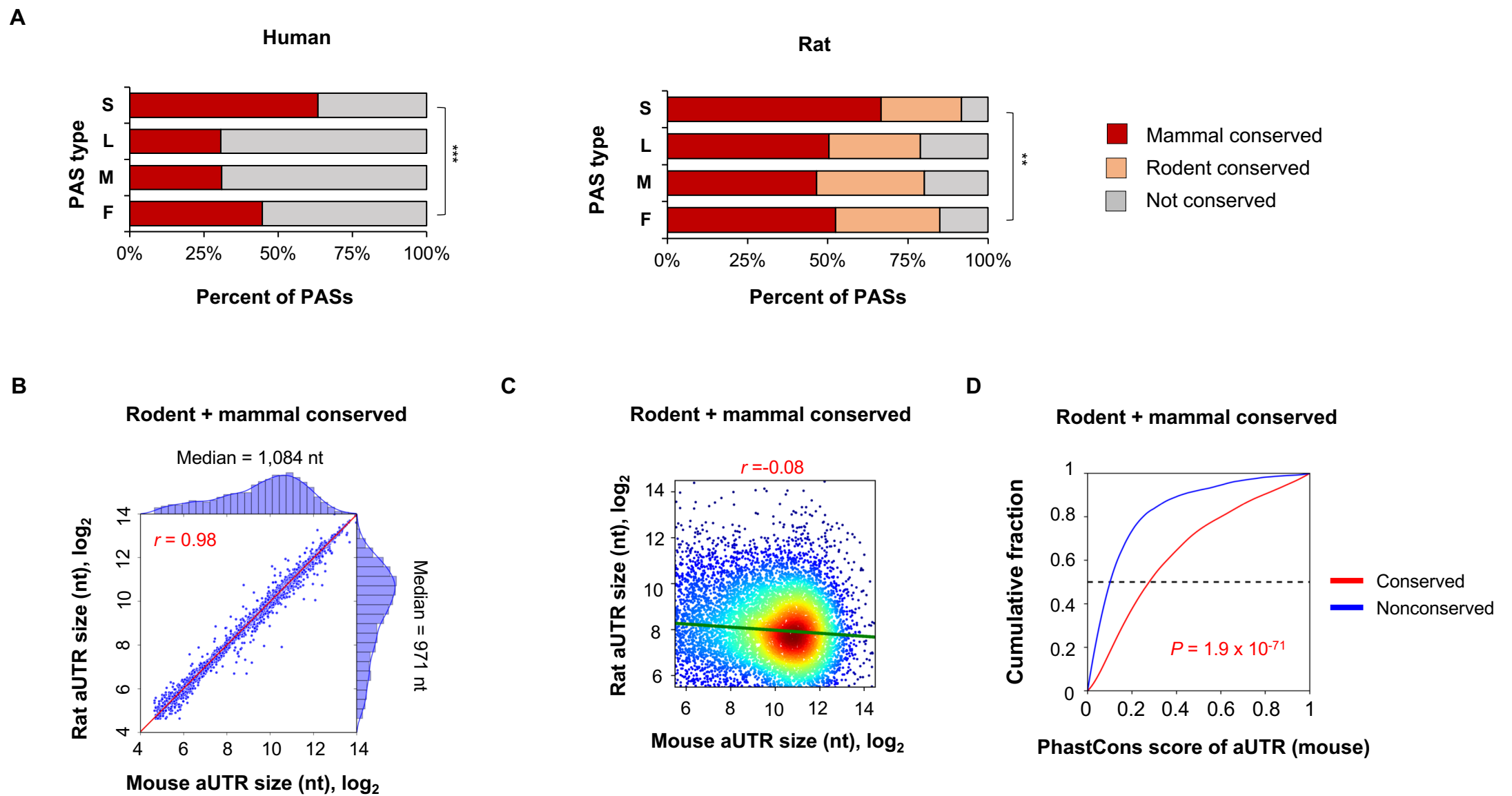


Figure S5. aUTR analysis of human and rat genes. (A) Conservation levels of PASs of different types. As in Figure 3B, except that the species are human and rat. **(B)** Correlation of aUTR size between mouse and rat genes (rodent + mammal conserved APA sites). As in Figure 3C, except the species are mouse and rat. **(C)** aUTR size vs. cUTR size in mouse (rodent + mammal conserved sites). **(D)** Cumulative Distribution Fraction (CDF) curves of phastCons scores of conserved aUTRs vs. nonconserved aUTRs. As in Figure 3E, except that the conserved PASs are mammal + rodent conserved.