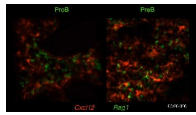
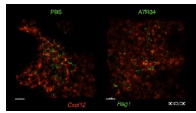


Supplemental material

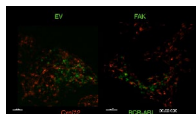
Fistonich et al., <https://doi.org/10.1084/jem.20180778>



Video 1. **Intravital imaging of proB and preB cells.** Lethally irradiated *Cxcl12^{dsRed/+}* mice were reconstituted with BM cells from *Rag1^{GFP/GFP}* (ProB, left) or from *Rag1^{GFP/GFP} Igh^{3-83/+}* (PreB, right) mice. IVM of BM calvaria was performed 4–6 wk after hematopoietic reconstitution. Time-lapse image sequences (60-µm z stack) of BM calvaria showing proB (left) and preB (right) cells (GFP⁺, green). CXCL12-producing cells are shown in red. Elapsed time is shown as hours/minutes/seconds. Data are representative of more than three independent experiments.



Video 2. **Intravital imaging of proB cells in mice treated with IL-7Ra blocking antibody.** Lethally irradiated *Cxcl12^{dsRed/+}* mice reconstituted with BM cells from *Rag1^{GFP/GFP}* and proB cells were visualized by IVM 4–6 wk after hematopoietic reconstitution. Time-lapse image sequences (60-µm z stack) of BM calvaria showing proB cells (GFP⁺) in mice treated with IL-7Ra antibody (right) or with isotype control (left) 36 h before IVM. Elapsed time is shown as hours/minutes/seconds. Data are representative of two independent experiments. Scale bars, 50 µm.



Video 3. **Intravital imaging of BCR-ABL-expressing preB leukemic cells.** EV- or FAK-transduced BCR-ABL⁺ preB cells were adoptively transferred into *Cxcl12^{dsRed/+}* mice for 14 d. Time-lapse image sequences (60-µm z stack) of BM calvaria showing EV-transduced BCR-ABL⁺ preB cells (left, GFP⁺) and FAK-transduced BCR-ABL⁺ preB cells. Elapsed time is shown as hours/minutes/seconds. Data are representative of multiple videos from two individual imaging experiments. Scale bars, 50 µm.