

Figure S1: PP1 regulates canonical NF- $\kappa$ B signaling

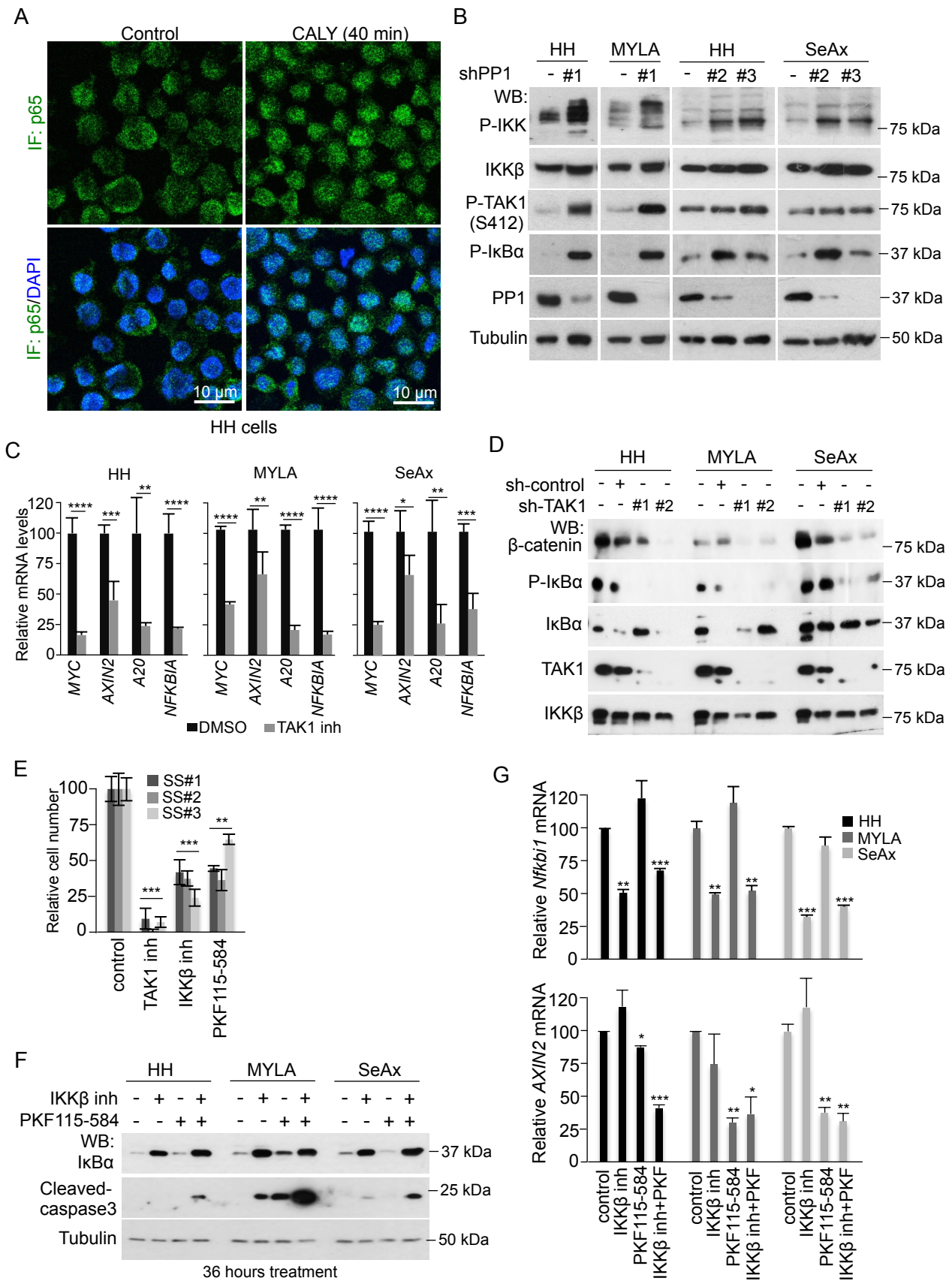


Figure S2: Knocking down ROCK1 results in I $\kappa$ B $\alpha$  stabilization

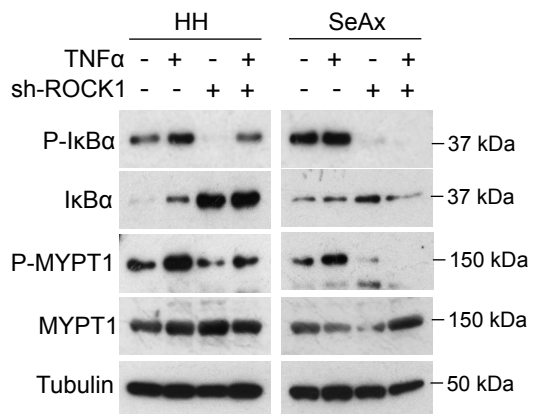


Figure S3: TAK1 becomes hyper-phosphorylated after PP1 inhibition

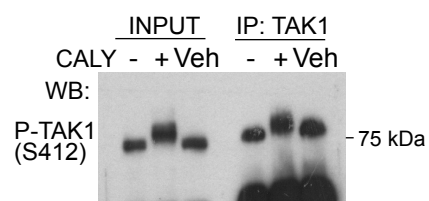


Figure S4: Antibodies against phosphorylated TAK1 peptides specifically recognize phosphorylated TAK1 from CTCL cells

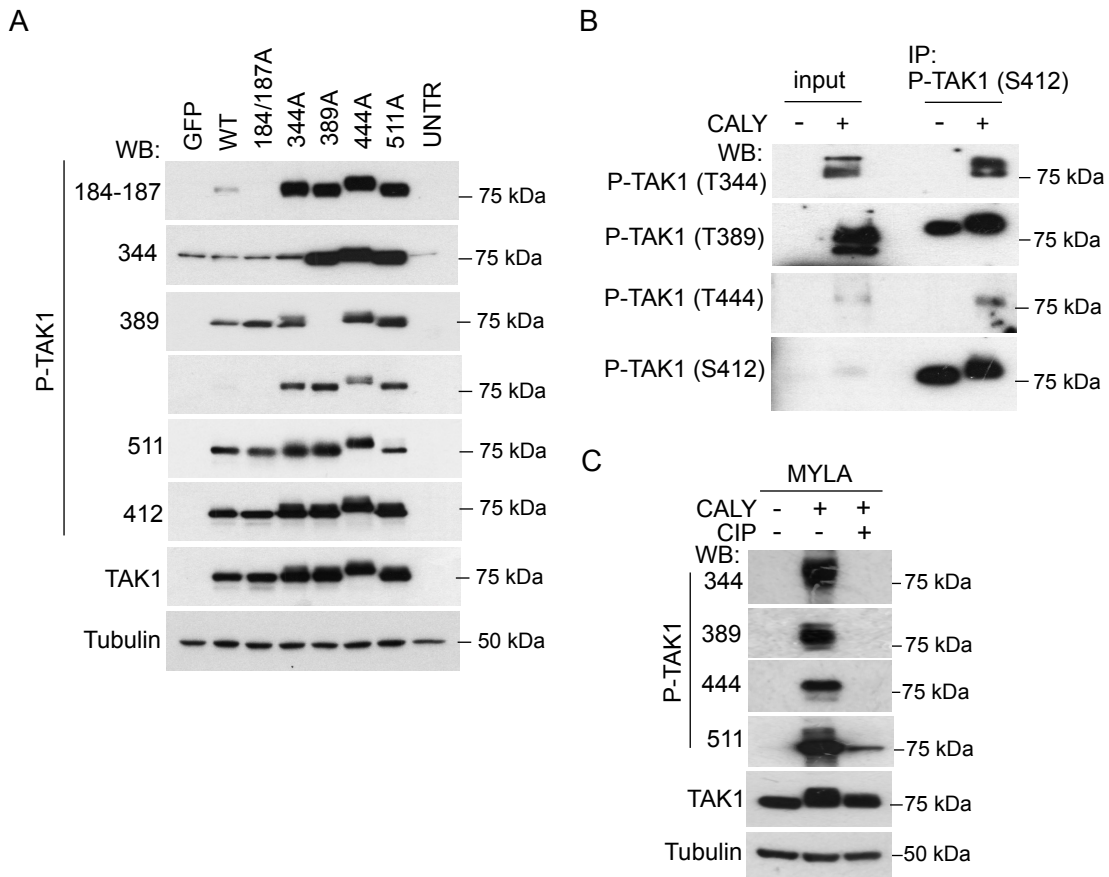


Figure S5: Characterization of CTCL tumors in vivo and effect of daily treatment with 10 mg/Kg TAK1 inhibitor.

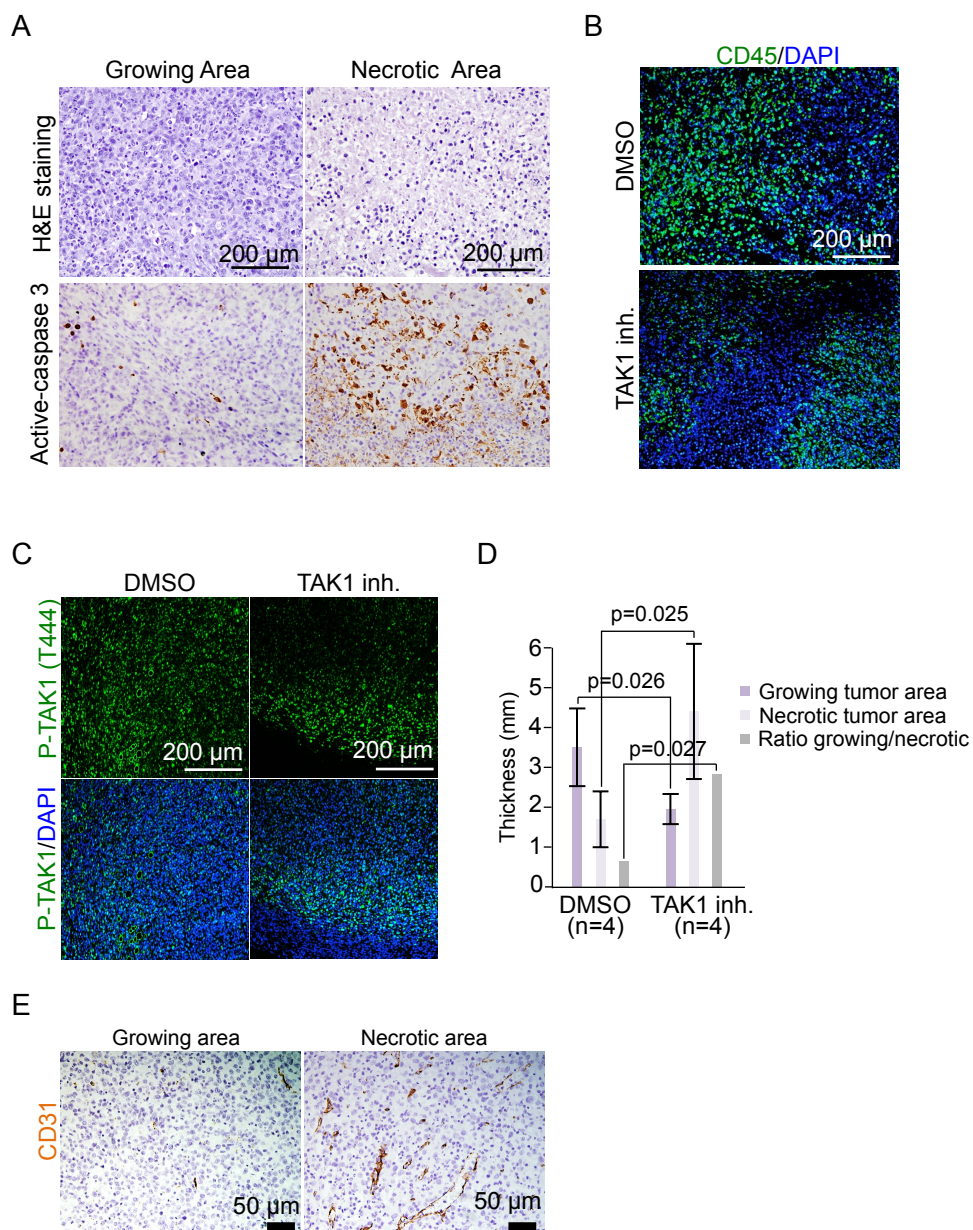


Figure S6: Detection of active NF- $\kappa$ B and  $\beta$ -catenin in frozen and paraffin-embedded CTCL human samples

