

Supplementary information, Figure S5

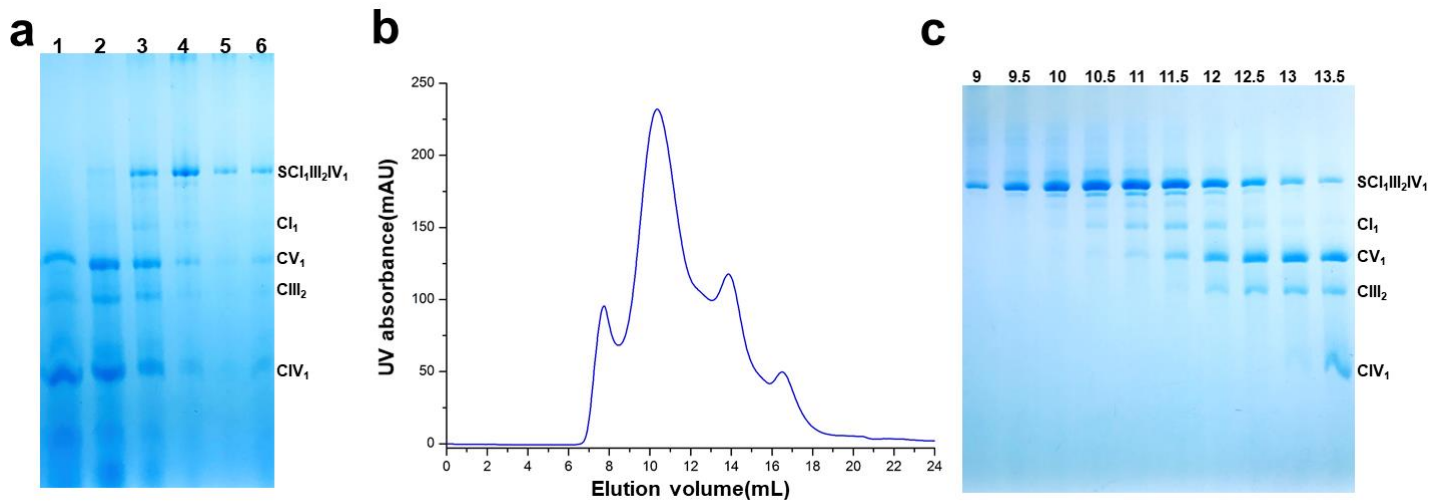


Figure S5. Biochemical Characterization of Monomeric CIV

(a) Fractions of sucrose gradient ultracentrifugation were analysed by BN-PAGE. (b) Representative trace of size-exclusion chromatography by the superpose 6 increase (10/300 GL) column of CIV and other respiratory complexes. (c) Protein samples of the size-exclusion chromatography fractions were subjected to BN-PAGE.