

Loss of CHD1 causes DNA repair defects and enhances prostate cancer therapeutic responsiveness

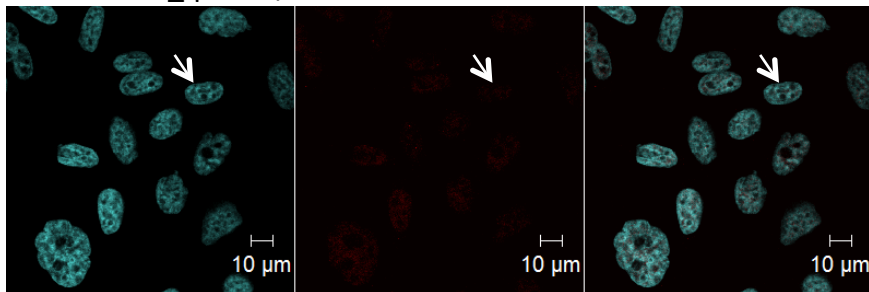
Vijayalakshmi Kari, Wael Yassin Mansour, Sanjay Kumar Raul, Simon J Baumgart, Andreas Mund, Marian Grade, Hüseyin Sirma, Ronald Simon, Hans Will, Matthias Dobbstein, Ekkehard Dikomey, Steven A Johnsen

Appendix

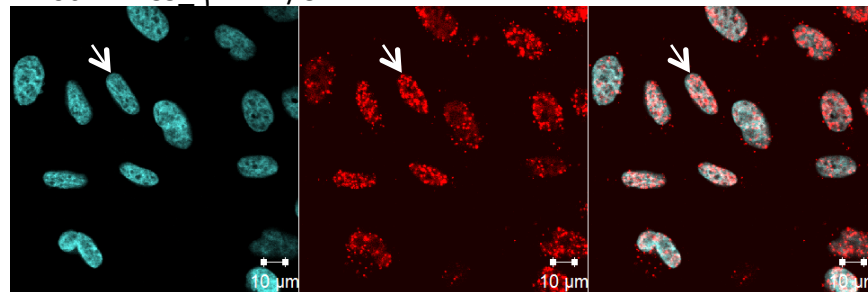
Appendix Figure S1

Appendix Figure S1

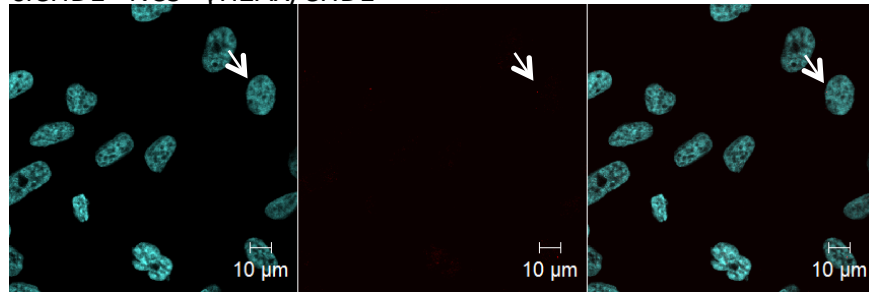
Mock -NCS_ γ H2AX/CHD1



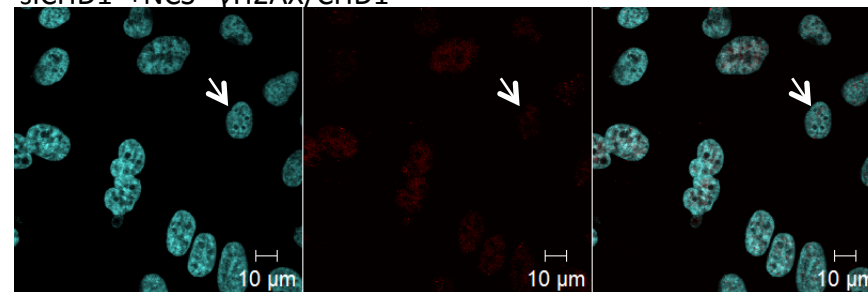
Mock +NCS_ γ H2AX/CHD1



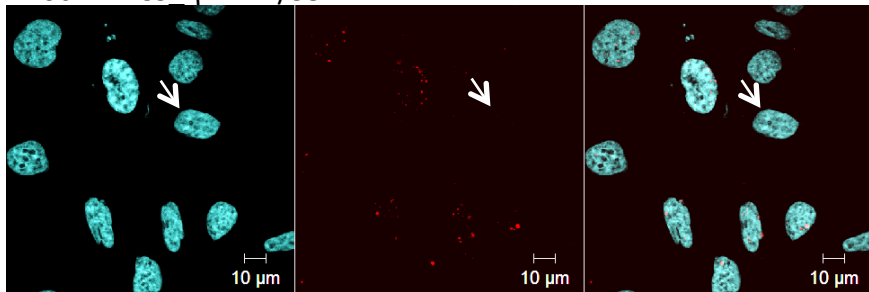
siCHD1 -NCS_ γ H2AX/CHD1



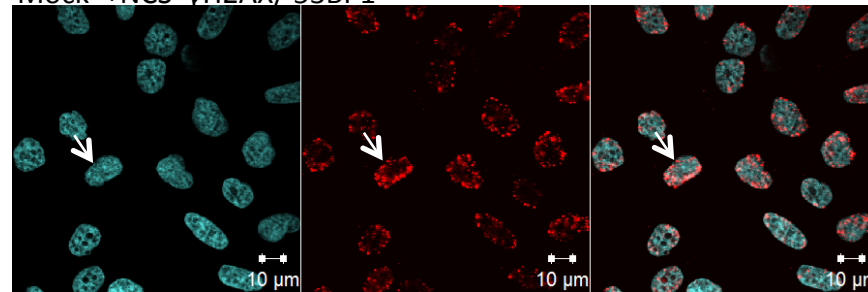
siCHD1 +NCS_ γ H2AX/CHD1



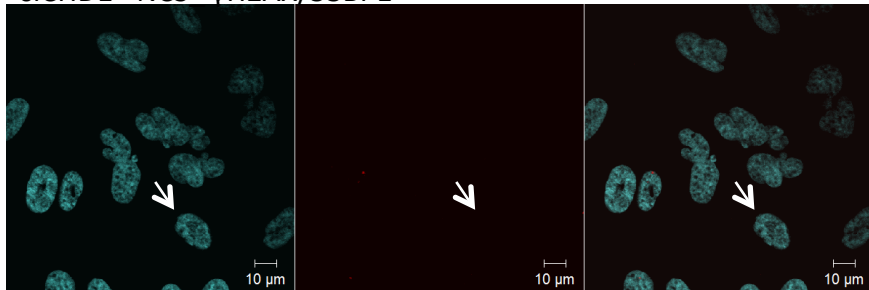
Mock -NCS_ γ H2AX/53BP1



Mock +NCS_ γ H2AX/53BP1



siCHD1 -NCS_ γ H2AX/53BP1



siCHD1 +NCS_ γ H2AX/53BP1

