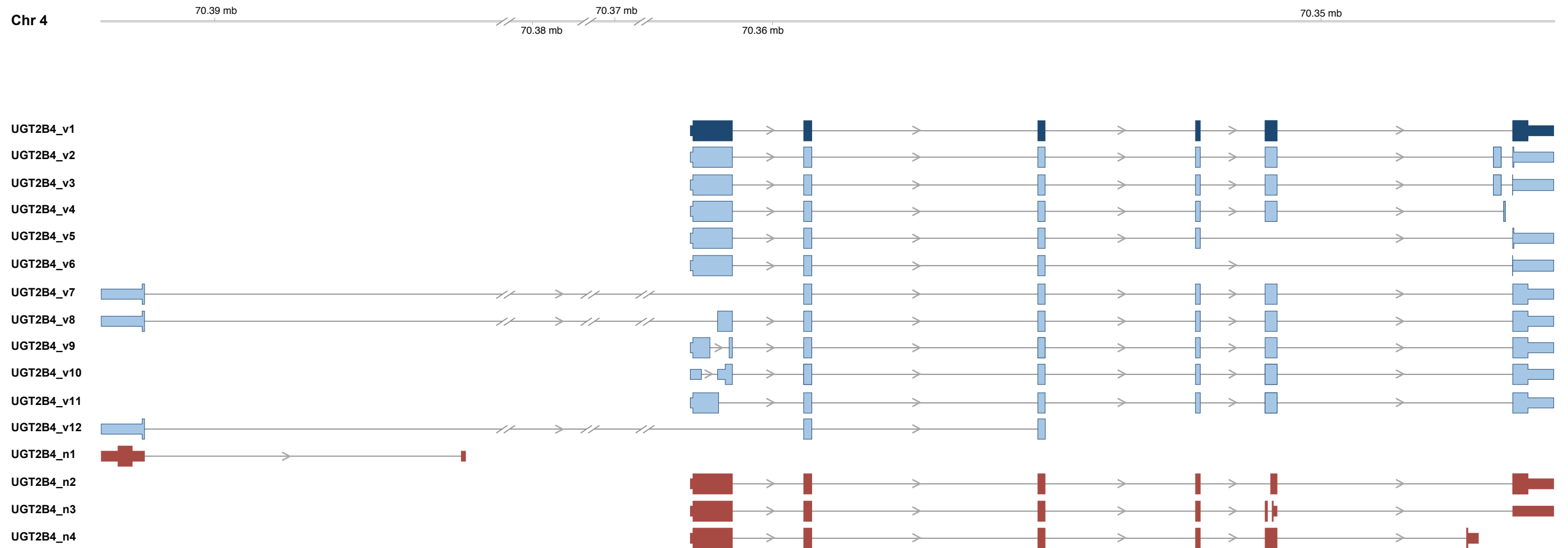


UGT2B4

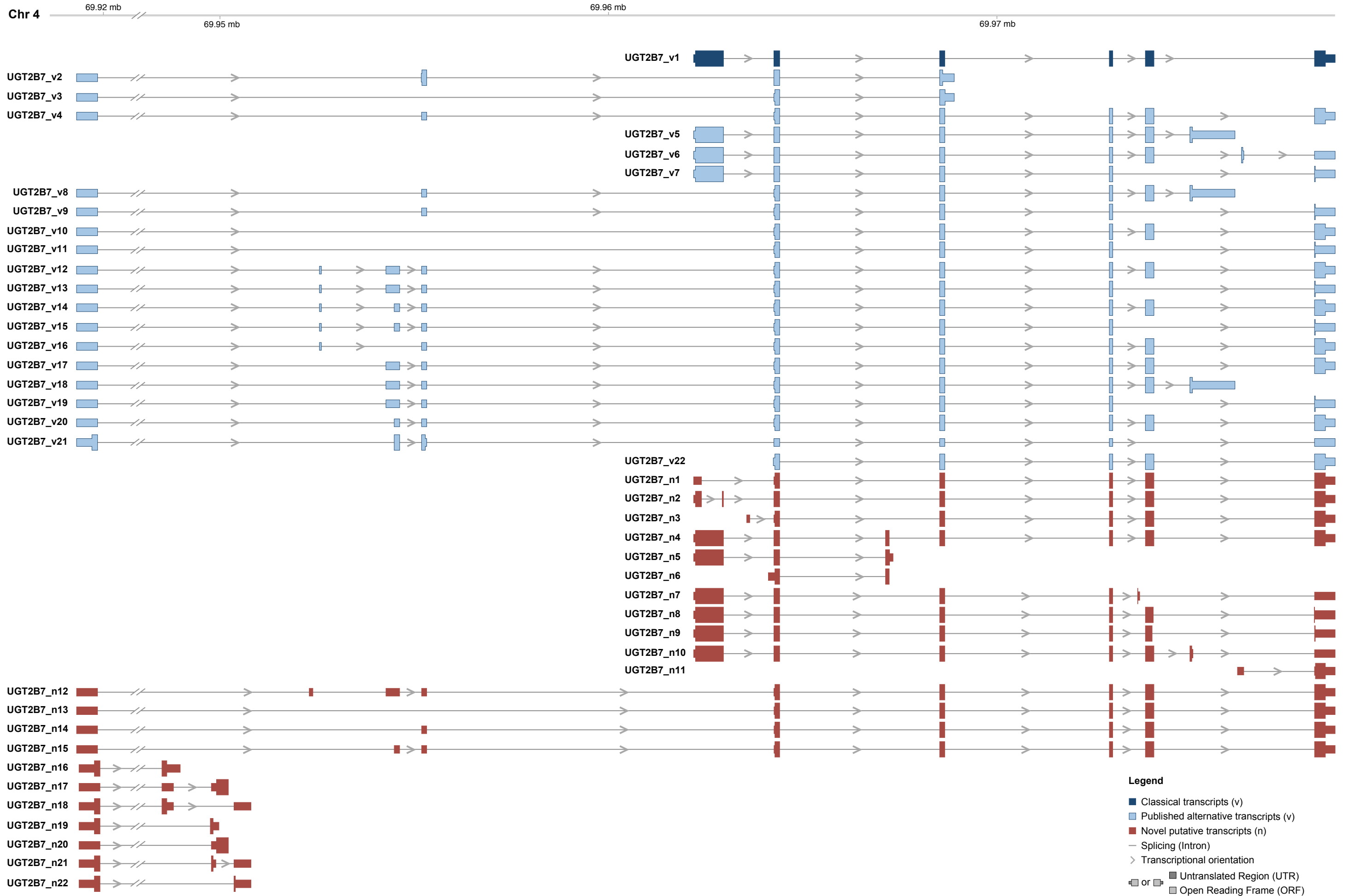


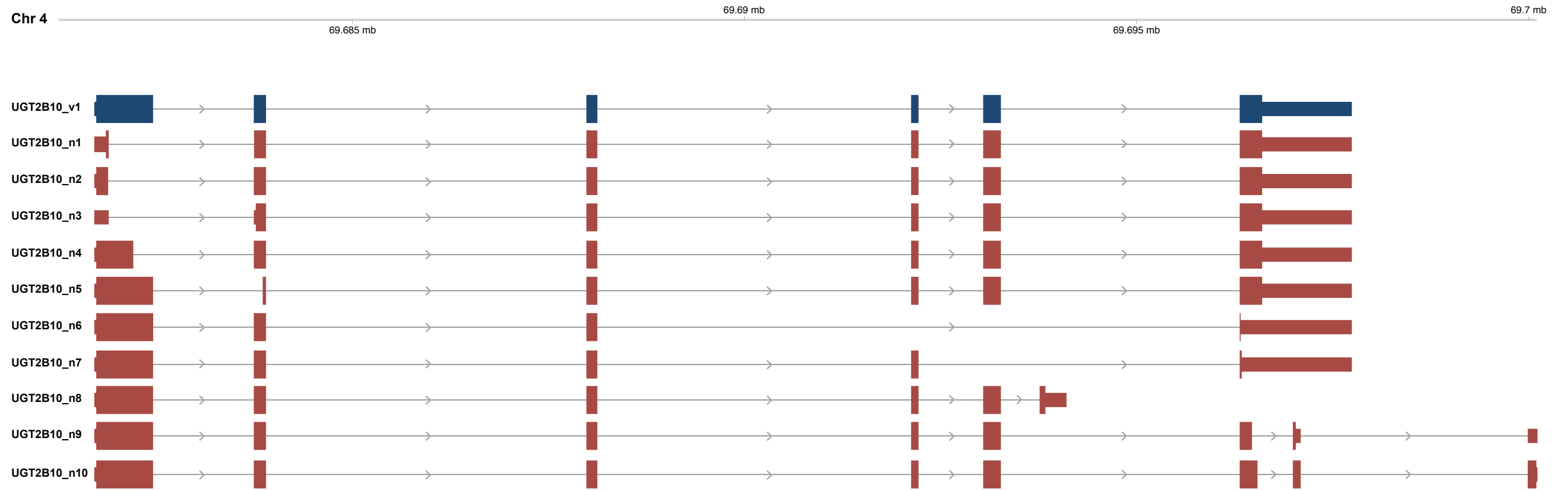
Legend

- Classical transcripts (v)
- Published alternative transcripts (v)
- Novel putative transcripts (n)
- Splicing (Intron)
- > Transcriptional orientation
- or ■ Untranslated Region (UTR)
- Open Reading Frame (ORF)

S2b

UGT2B7

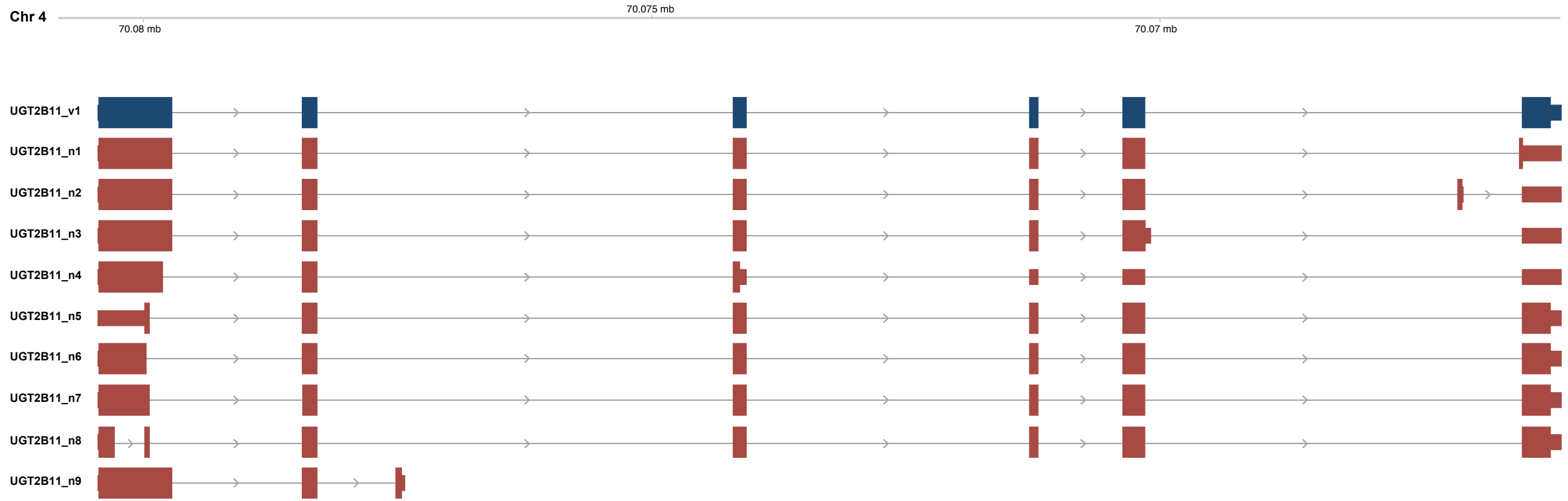


UGT2B10

Legend

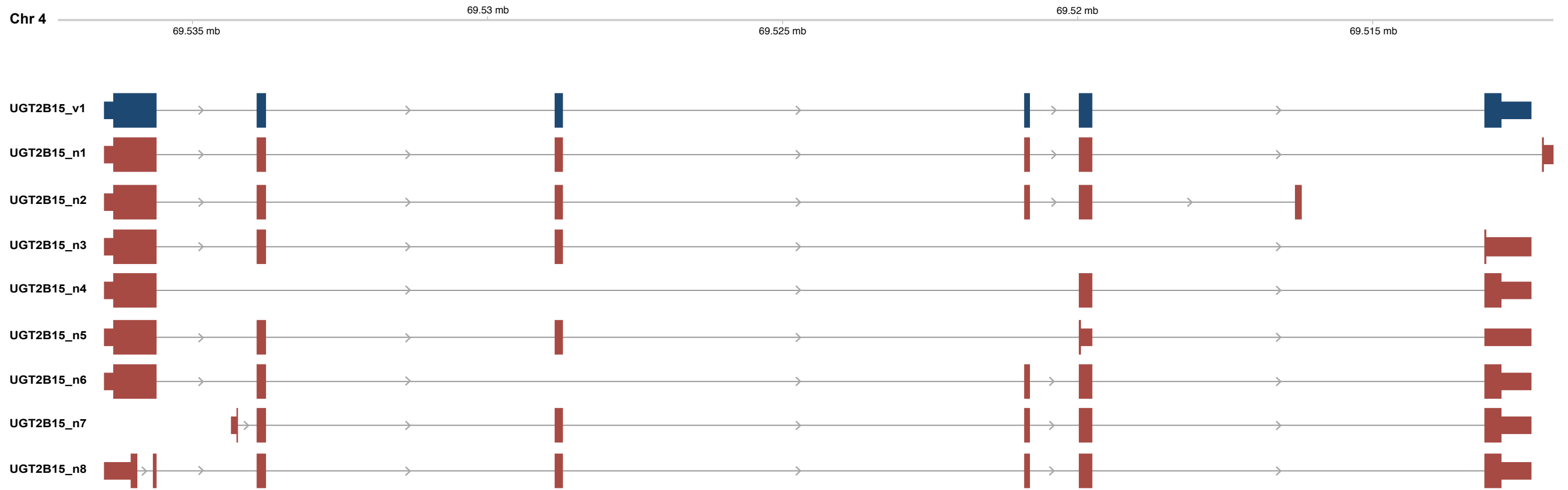
- Classical transcripts (v)
- Published alternative transcripts (v)
- Novel putative transcripts (n)
- Splicing (Intron)
- > Transcriptional orientation
- or ■ Untranslated Region (UTR)
- or ■ Open Reading Frame (ORF)

UGT2B11

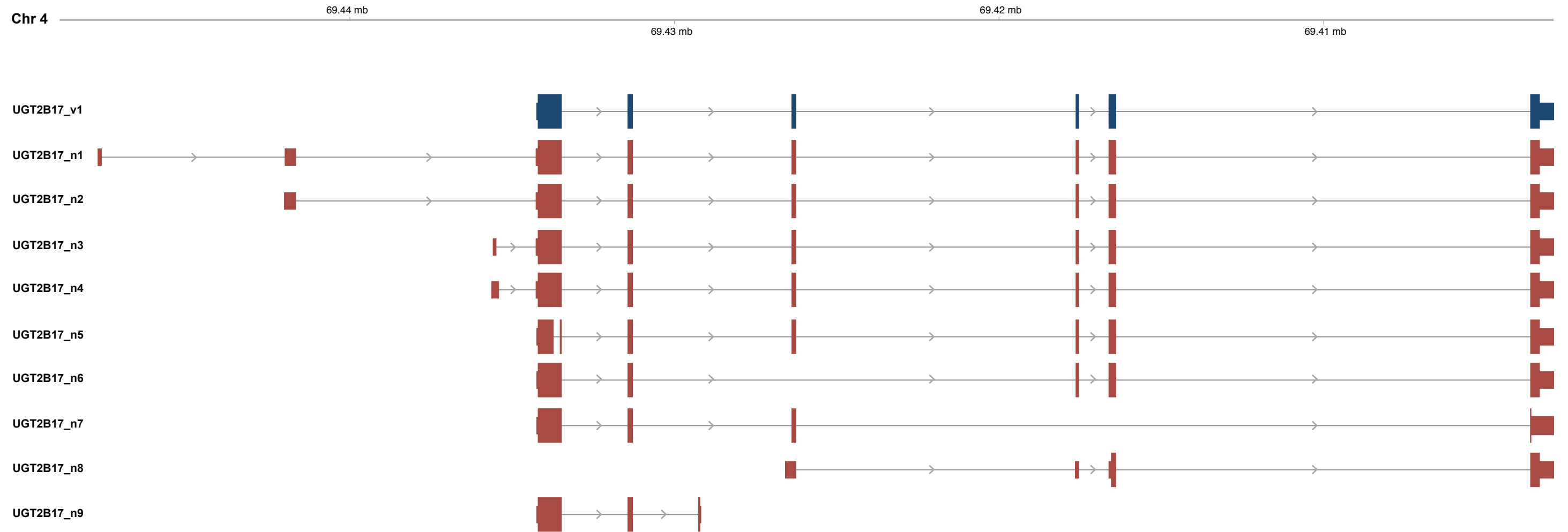


Legend

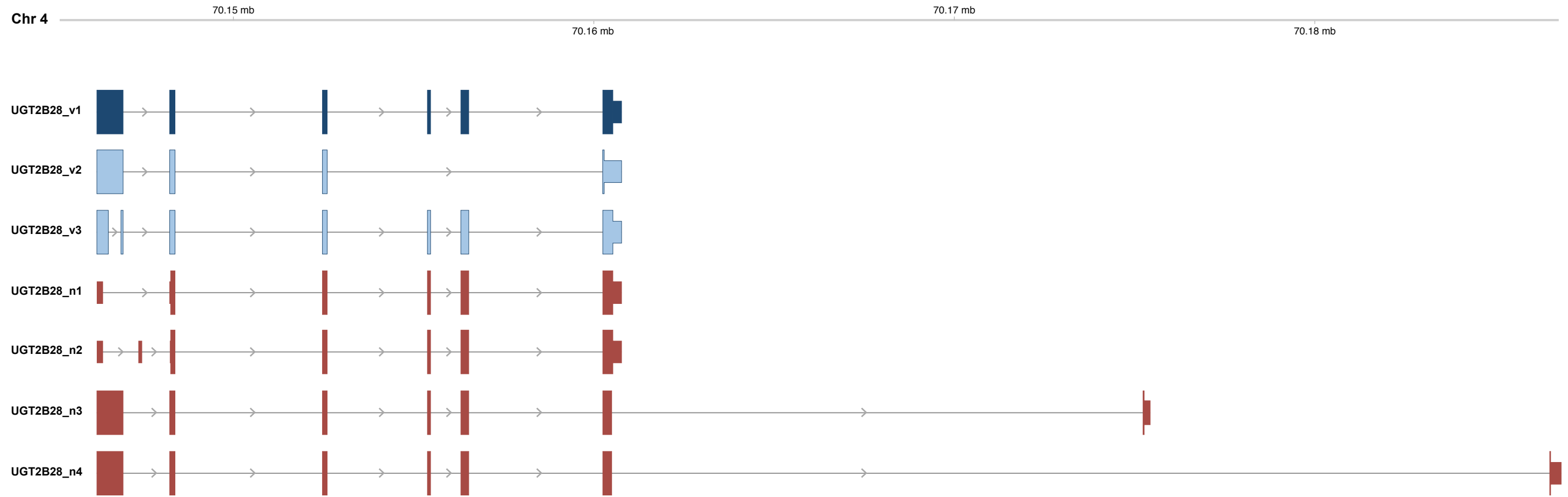
- Classical transcripts (v)
- Published alternative transcripts (v)
- Novel putative transcripts (n)
- Splicing (Intron)
- > Transcriptional orientation
- or ■ Untranslated Region (UTR)
- Open Reading Frame (ORF)

UGT2B15**Legend**

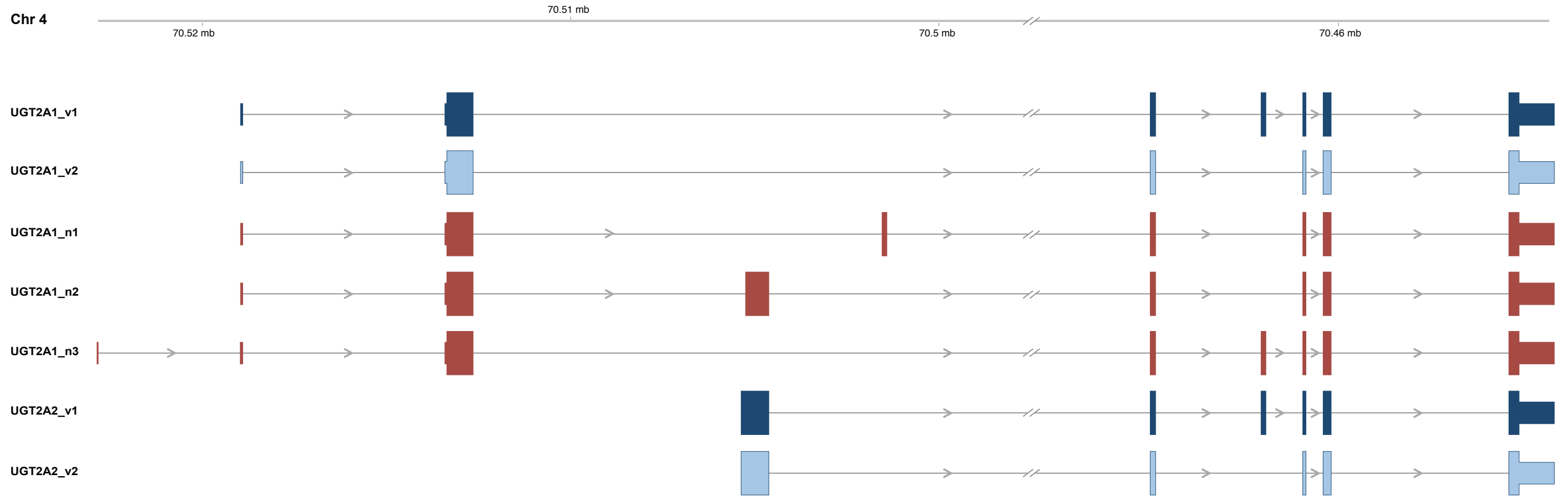
- Classical transcripts (v)
- Published alternative transcripts (v)
- Novel putative transcripts (n)
- Splicing (Intron)
- > Transcriptional orientation
- or ■ Untranslated Region (UTR)
- or ■ Open Reading Frame (ORF)

UGT2B17**Legend**

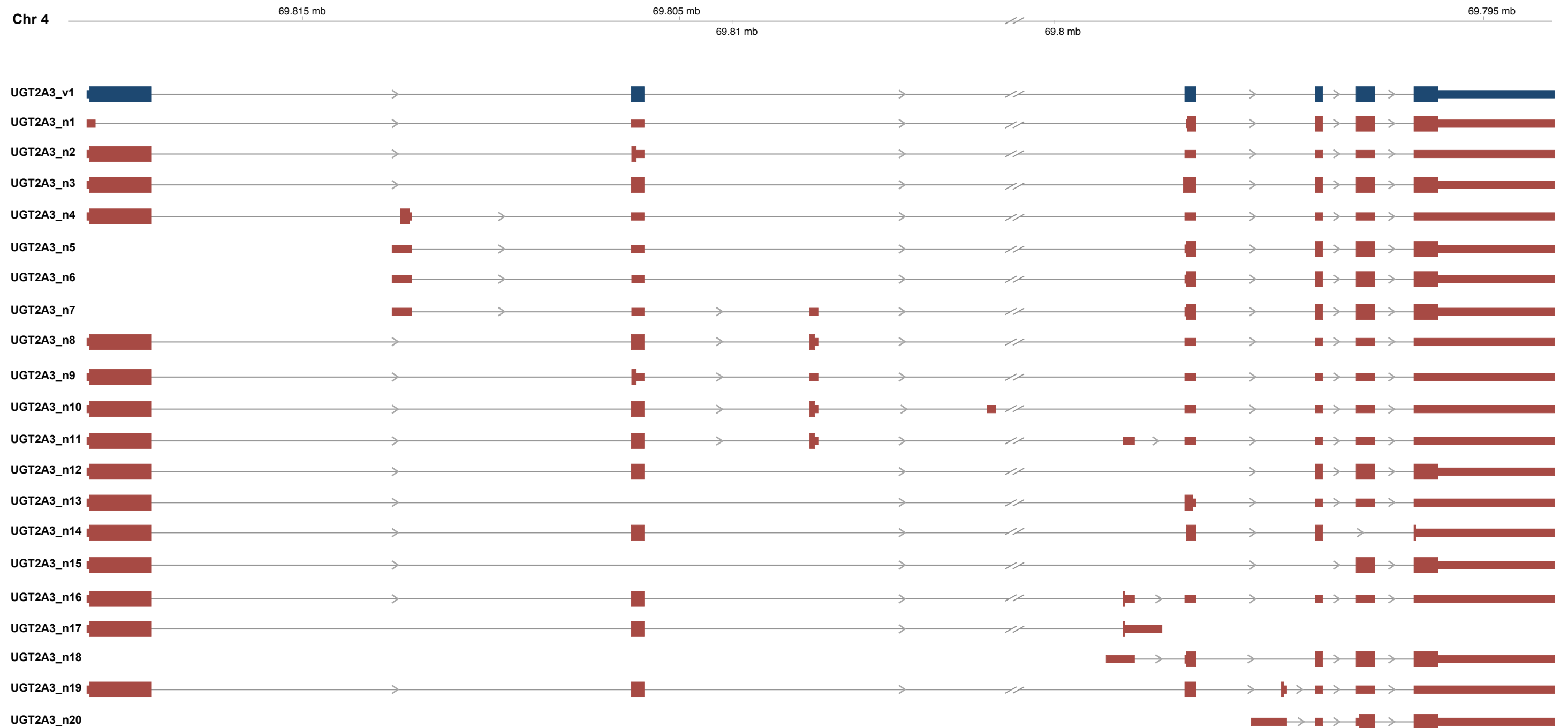
- Classical transcripts (v)
- Published alternative transcripts (v)
- Novel putative transcripts (n)
- Splicing (Intron)
- > Transcriptional orientation
- or ■ Untranslated Region (UTR)
- Open Reading Frame (ORF)

UGT2B28**Legend**

- Classical transcripts (v)
- Published alternative transcripts (v)
- Novel putative transcripts (n)
- Splicing (Intron)
- > Transcriptional orientation
- Untranslated Region (UTR)
- or ■ Open Reading Frame (ORF)

UGT2A1-2A2**Legend**

- Classical transcripts (v)
- Published alternative transcripts (v)
- Novel putative transcripts (n)
- Splicing (Intron)
- > Transcriptional orientation
- Untranslated Region (UTR)
- or ■ Open Reading Frame (ORF)

UGT2A3**Legend**

- Classical transcripts (v)
- Published alternative transcripts (v)
- Novel putative transcripts (n)
- Splicing (Intron)
- > Transcriptional orientation
- or ■ Untranslated Region (UTR)
- or ■ Open Reading Frame (ORF)