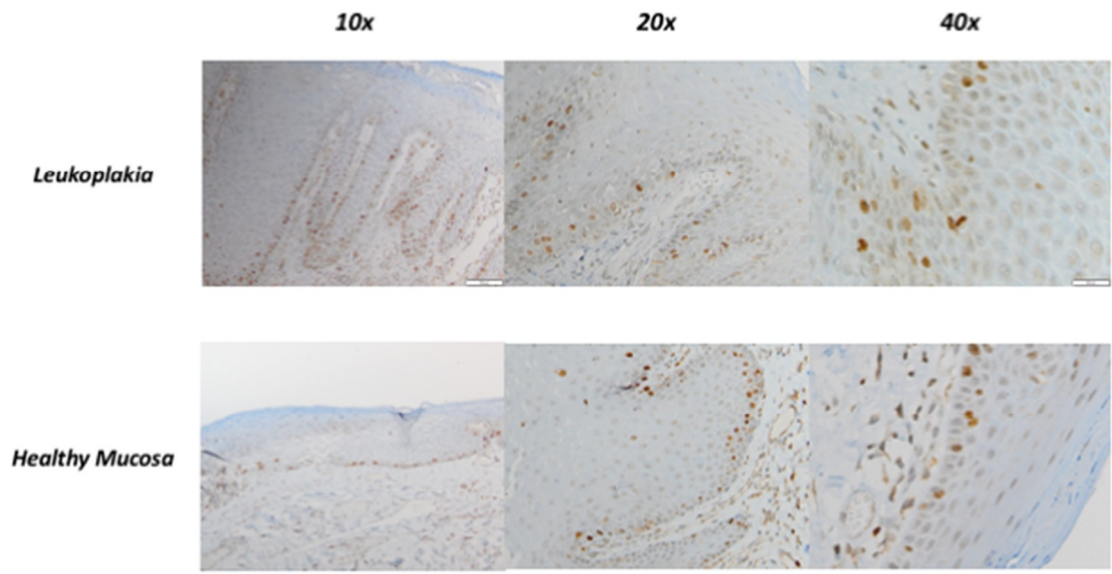
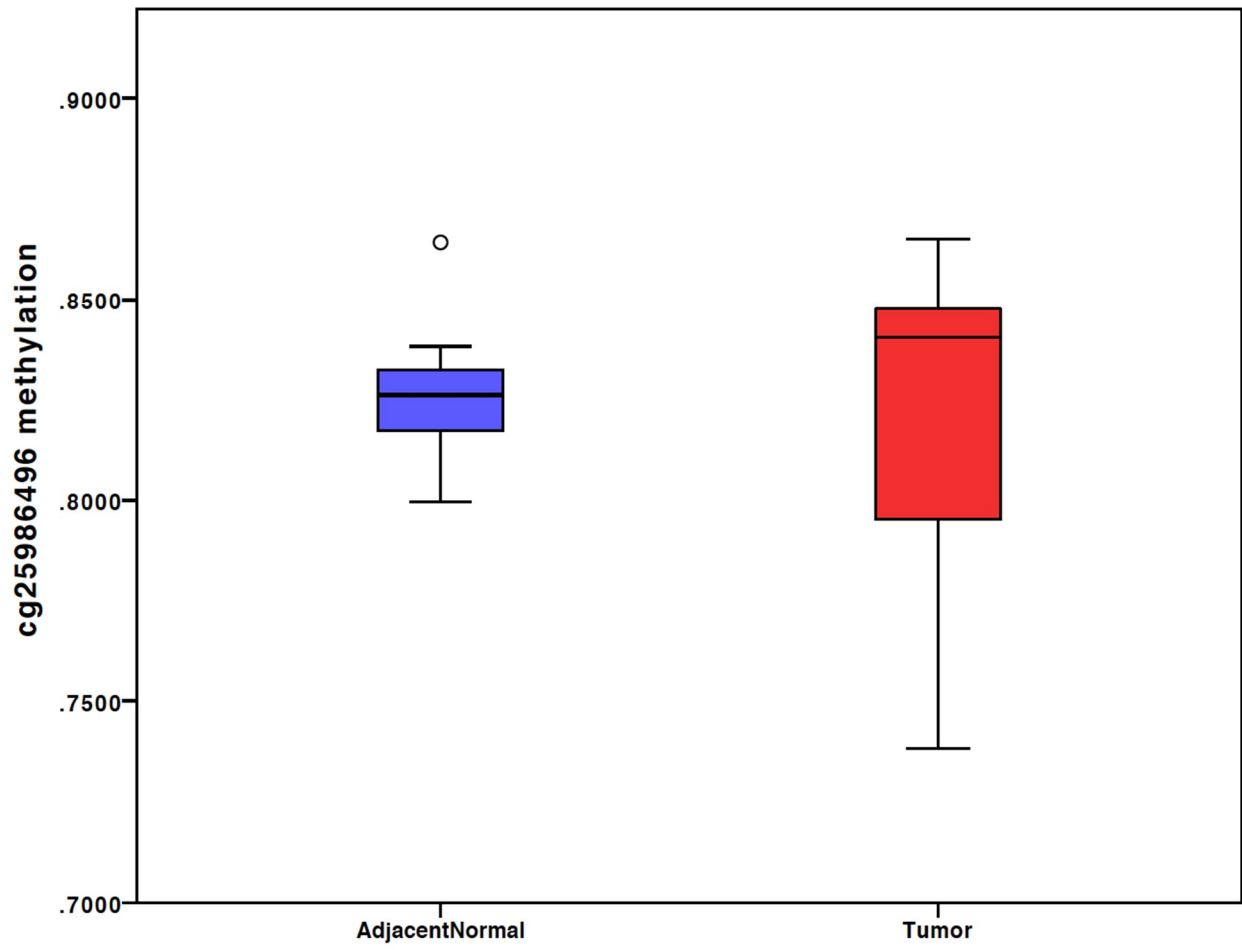


	Cytoplasmic Expression	Nuclear Expression	Ki-67 Expression	Grade	Stage	Age
Cytoplasmic Expression	$\rho = 1$ $p\text{-value} = 1$	$\rho = 0.319 *$ $p\text{-value} = 0.001 *$	$\rho = 0.199$ $p\text{-value} = 0.644$	$\rho = 0.218 *$ $p\text{-value} = 0.024 *$	$\rho = 0.072$ $p\text{-value} = 0.458$	$\rho = 0.044$ $p\text{-value} = 0.654$
Nuclear Expression		$\rho = 1$ $p\text{-value} = 1$	$\rho = 0.309 *$ $p\text{-value} = 0.012 *$	$\rho = 0.215 *$ $p\text{-value} = 0.026 *$	$\rho = 0.064$ $p\text{-value} = 0.516$	$\rho = -0.052$ $p\text{-value} = 0.592$
Ki-67 expression			$\rho = 1$ $p\text{-value} = 1$	$\rho = 0.196$ $p\text{-value} = 0.115$	$\rho = 0.008$ $p\text{-value} = 0.949$	$\rho = 0.117$ $p\text{-value} = 0.35$
Grade				$\rho = 1$ $p\text{-value} = 1$	$\rho = 0.066$ $p\text{-value} = 0.501$	$\rho = 0.113$ $p\text{-value} = 0.246$
Stage					$\rho = 1$ $p\text{-value} = 1$	$\rho = -0.120$ $p\text{-value} = 0.219$
Age						$\rho = 1$ $p\text{-value} = 1$

**Supplemental Materials:** Pearson's correlation of OSCC patients in the authors' own database. For the analysis, the Nuclear and Cytoplasmic expression were categorized as high/low on the basis of a threshold of 60% percentage expression. Staging was categorized in low (S1-S2) and high (S3-S4), Grading in high (G3) and low (G1-G2), and Age in old ( $\geq 65$  years' old) and non-old ( $< 65$  years' old).



**Supplemental Materials:** Expression of Survivin in leukoplakia and healthy mucosa samples was mainly nuclear and confined in the basal third of the epithelium.



**Supplemental Materials:** Gene Expression Omnibus (GEO) analysis of methylation of the island cg25986496 in both tumor and paired adjacent normal samples.