

Supporting Information

Getting Closer to Absolute Molar Masses of Technical Lignins

Grigory Zinovyev^{+, [a]} Irina Sulaeva^{+, [a]} Stepan Podzimek,^[b, c] Dierk Rössner,^[b]
Ilkka Kilpeläinen,^[d] Ivan Sumerskii,^[a] Thomas Rosenau,^{*, [a]} and Antje Potthast^{*, [a]}

cssc_201801177_sm_miscellaneous_information.pdf

Author Contributions

G.Z. Investigation: Equal; Writing – original draft: Equal

I.S. Investigation: Equal; Writing – original draft: Equal

S.P. Methodology: Supporting; Writing – review & editing: Supporting

D.R. Formal analysis: Supporting; Methodology: Supporting; Writing – review & editing: Supporting

I.K. Conceptualization: Supporting; Formal analysis: Supporting; Writing – review & editing: Supporting

I.S. Conceptualization: Supporting; Formal analysis: Equal; Methodology: Equal; Writing – original draft: Equal

A.P. Conceptualization: Equal; Formal analysis: Equal; Funding acquisition: Equal; Methodology: Equal; Project administration: Equal; Writing – review & editing: Equal.

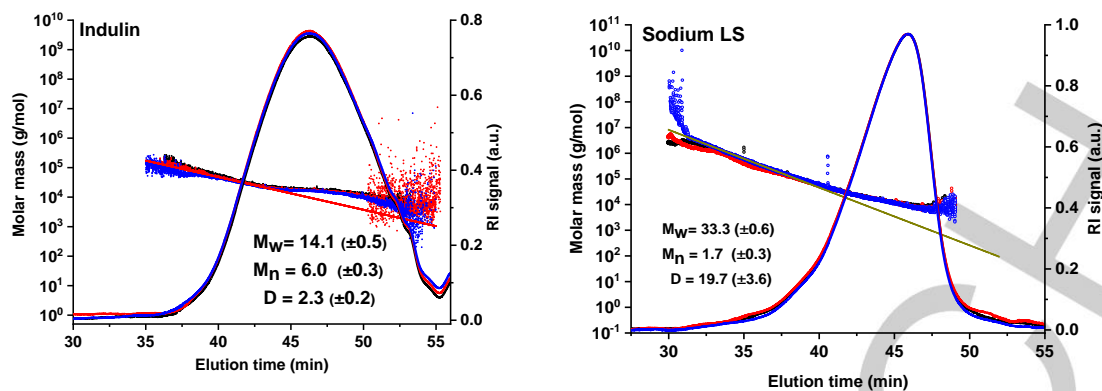


Figure S1. Repeatability of Indulin and Sodium LS samples. Average (10^3 g/mol) of three single measurements (N=3) with time interval 24 h.

Table S1. Comparison of the statistical moments for kraft lignin fractions obtained by calibration with PSS, MALS-658 nm and MALS-785 nm signals of the FM with fluorescence filters and the results extrapolation).

Lignin fractions (cut-off)	Based on PSS (10^3 g/mol)			MALS-658 nm (10^3 g/mol)			MALS-785 nm (10^3 g/mol)		
	M_w	M_n	M_z	M_w	M_n	M_z	M_w	M_n	M_z
100	3.6	1.1	6.3	56.0	73.5	30.0	24.5	5.6	85.2
30	2.9	1.1	5.2	43.1	40.0	46.0	9.1	5.1	14.1
10	2.3	0.5	3.4	65.4	14.4	49.4	7.5	4.1	13.9
5	1.1	0.2	1.7	17.7	11.1	27.0	3.0	2.7	3.3
3	0.5	0.1	1.0	34.3	7.3	93.0	1.5	0.4	5.6
1	0.3	0.1	0.7	72.1	62.2	82.7	0.8	0.4	1.5