

Supplementary Information

Beauvericin inhibits melanogenesis by regulating cAMP/PKA/CREB and LXR- α /p38

MAPK-mediated pathways

Seung Eun Lee^{a,1}, See-Hyoung Park^{d,1}, Sae Woong Oh^a, Ju Ah Yoo^a, Kitae Kwon^a, Se Jung Park^a, Jangsoon Kim^a, Hak Sung Lee^e, Jae Youl Cho^{b,c,*}, Jongsung Lee^{a,c,*}

^a*Molecular Dermatology Laboratory, Department of Integrative Biotechnology & Biocosmetics Research Center, College of Biotechnology and Bioengineering, Sungkyunkwan University, Suwon City, 16419 Gyunggi Do, Republic of Korea*

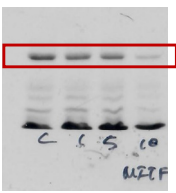
^b*Molecular Immunology Laboratory, Department of Integrative Biotechnology, College of Biotechnology and Bioengineering, Sungkyunkwan University, Suwon City, 16419 Gyunggi Do, Republic of Korea*

^c*Biocosmetics Research Center, College of Biotechnology and Bioengineering, Sungkyunkwan University, Suwon City, 16419 Gyunggi Do, Republic of Korea*

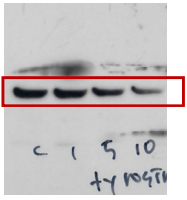
^d*Department of Bio and Chemical Engineering, Hongik University, 30016 Sejong City, Republic of Korea*

^e*Food Science R&D Center, Kolmar BNH Co., Ltd., 30003 Sejong City, Republic of Korea*

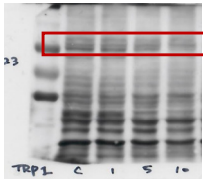
Raw Data (Fig. 2)



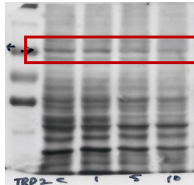
MITF



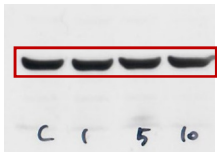
Tyrosinase



TRP1

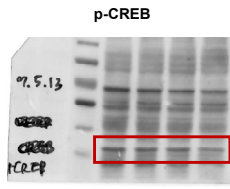


TRP2



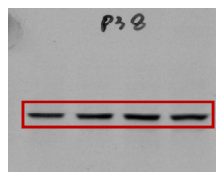
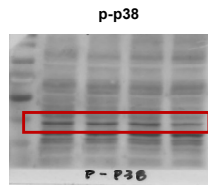
beta-actin

Raw Data
(Fig. 3)

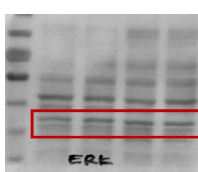
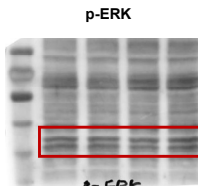


CREB

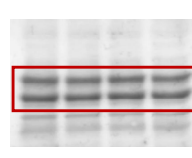
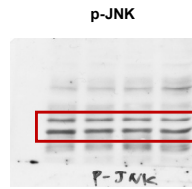
Raw Data
(Fig. 4)



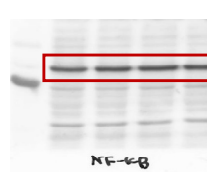
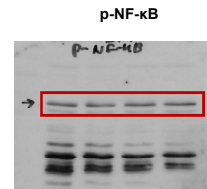
p38



ERK

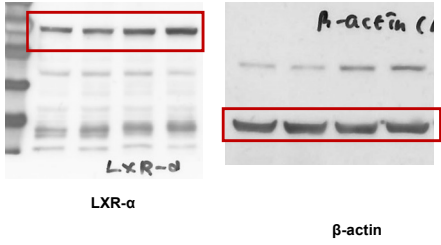


JNK

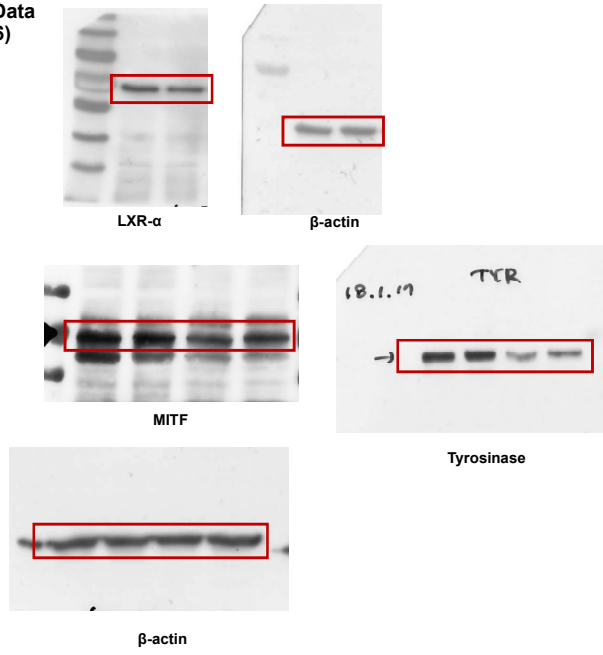


NF-kB

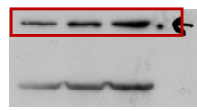
Raw Data
(Fig. 5)



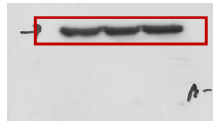
Raw Data
(Fig. 6)



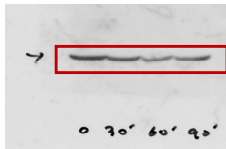
Raw Data
(Fig. 7)



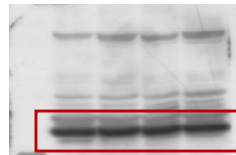
LXR-α



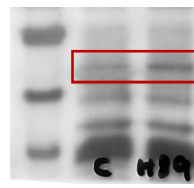
β-actin



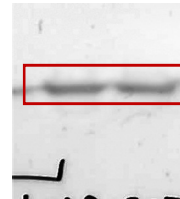
p-p38



p38



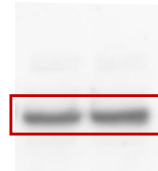
LXR-α



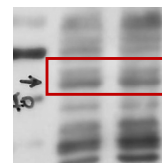
β-actin



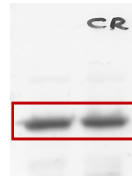
p-p38



p38



p-CREB



CREB