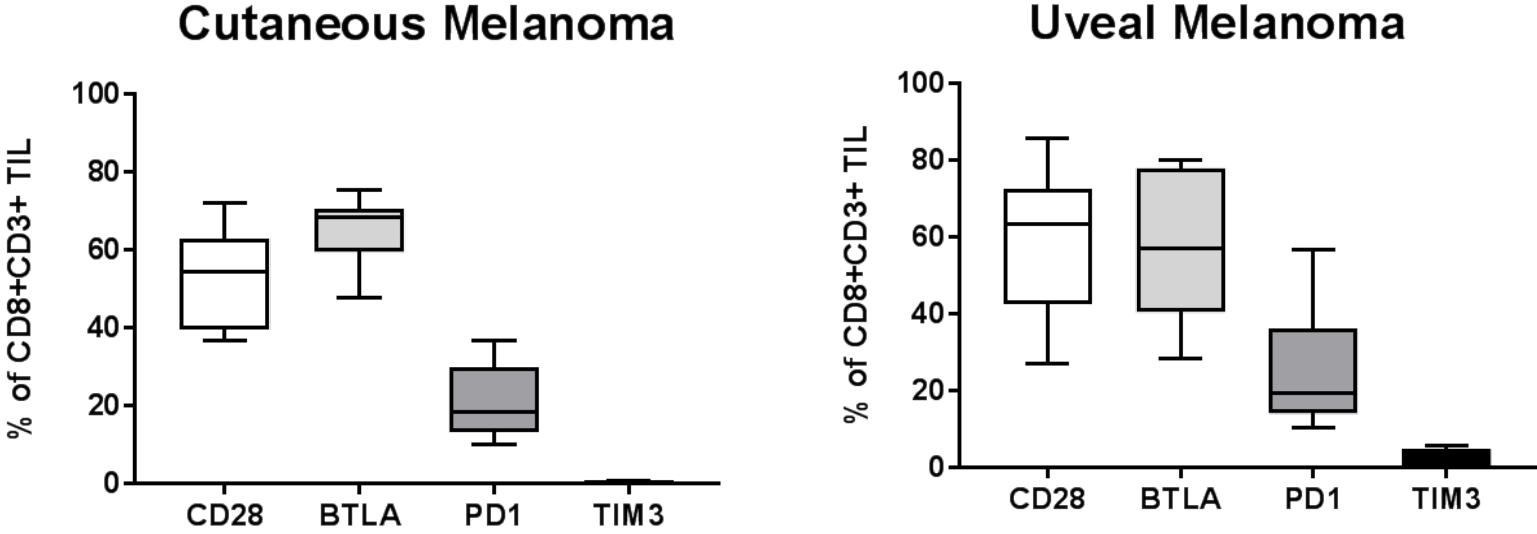


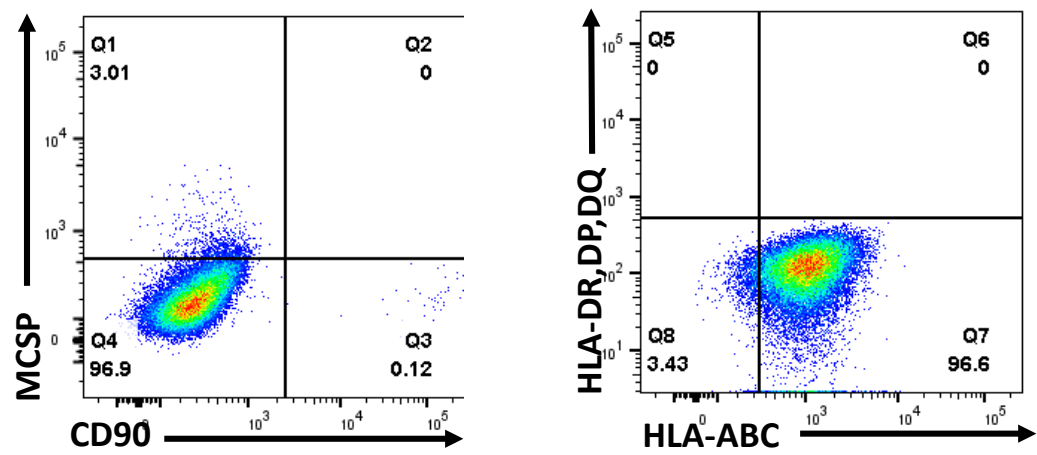
Supplementary Figure 1



Supplementary Figure 1. Short differentiation/activation status assessment for both Cutaneous and uveal melanoma TIL grown using the 3 signal method.
Cutaneous and uveal melanoma TIL lines (n=10 and n=9, respectively) post-expansion using the 3 signal method were assessed for their expression of CD28, BTLA, PD1 and TIM3 by flow cytometry on CD8⁺ TIL. Gating was done using FMO (fluorescence minus one) after excluding cell doublets and dead cells.

Supplementary Figure 2

MEL #3121



Supplementary Figure 2. Phenotype and MHC class I expression of uveal melanoma line #3121.
Uveal melanoma tumor line was phenotyped using flow cytometry for CD90 for fibroblast exclusion and pan MHC class I expression.