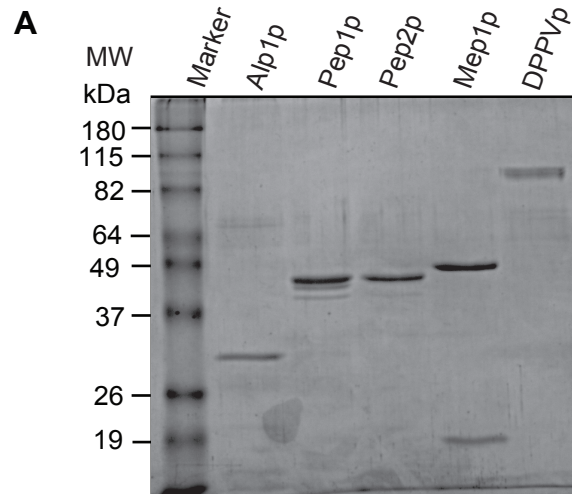
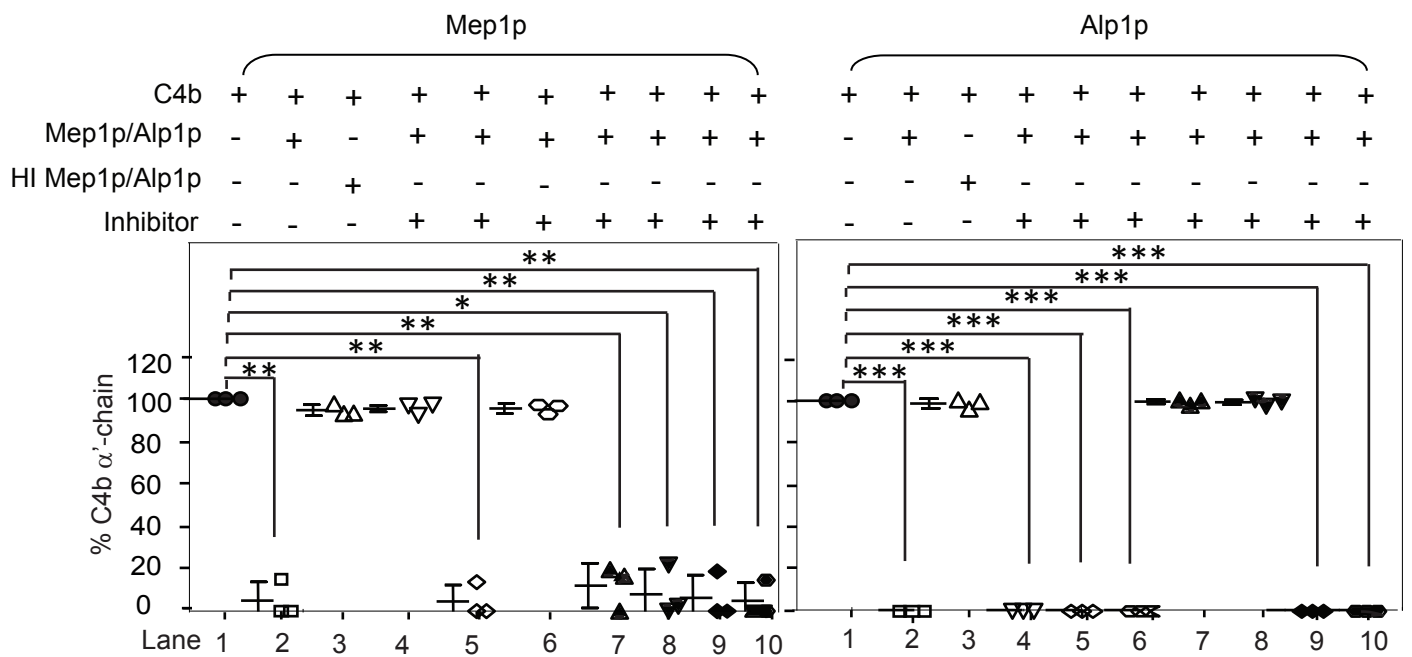


## Supplemental Figure:1



**Figure S1: SDS-PAGE analysis of purified *A. fumigatus* proteases.** The indicated proteases were expressed using *Pichia* expression system, purified as described (see *Material and Methods*) and run on 10% SDS-PAGE under reducing conditions. The gel was stained with Coomassie blue.

## Supplemental Figure:2



**Figure S2: Inhibition of proteolytic activity of Mep1p by various classes of protease inhibitors.**

The percentage of C4b cleaved was quantitated by densitometric analysis of the  $\alpha'$ -chain band and presented as mean+SD of three experiments; \* $p < 0.05$ ; \*\* $p < 0.005$ ; \*\*\* $p < 0.0005$  (quantitative data for gels shown in Fig. 2B). Inhibitors: Lanes 1-3, no inhibitor; lane 4, Roche complete mini cocktail (1x); lane 5, Roche complete mini, EDTA-free (1x); lane 6, EDTA, (10 mM); lane 7, PMSF, Phenylmethylsulfonyl fluoride (1 mM); lane 8, Chy, Chymostatin (100  $\mu\text{g/ml}$ ); lane 9, Leu, Leupeptin (2.5  $\mu\text{g/ml}$ ); lane 10, Pep, Pepstatin (11  $\mu\text{g/ml}$ ). The proteolytic activity of Mep1p for C4b was inhibited by EDTA, while that of Alp1p was inhibited by the serine protease inhibitors.

Supplemental Figure:3

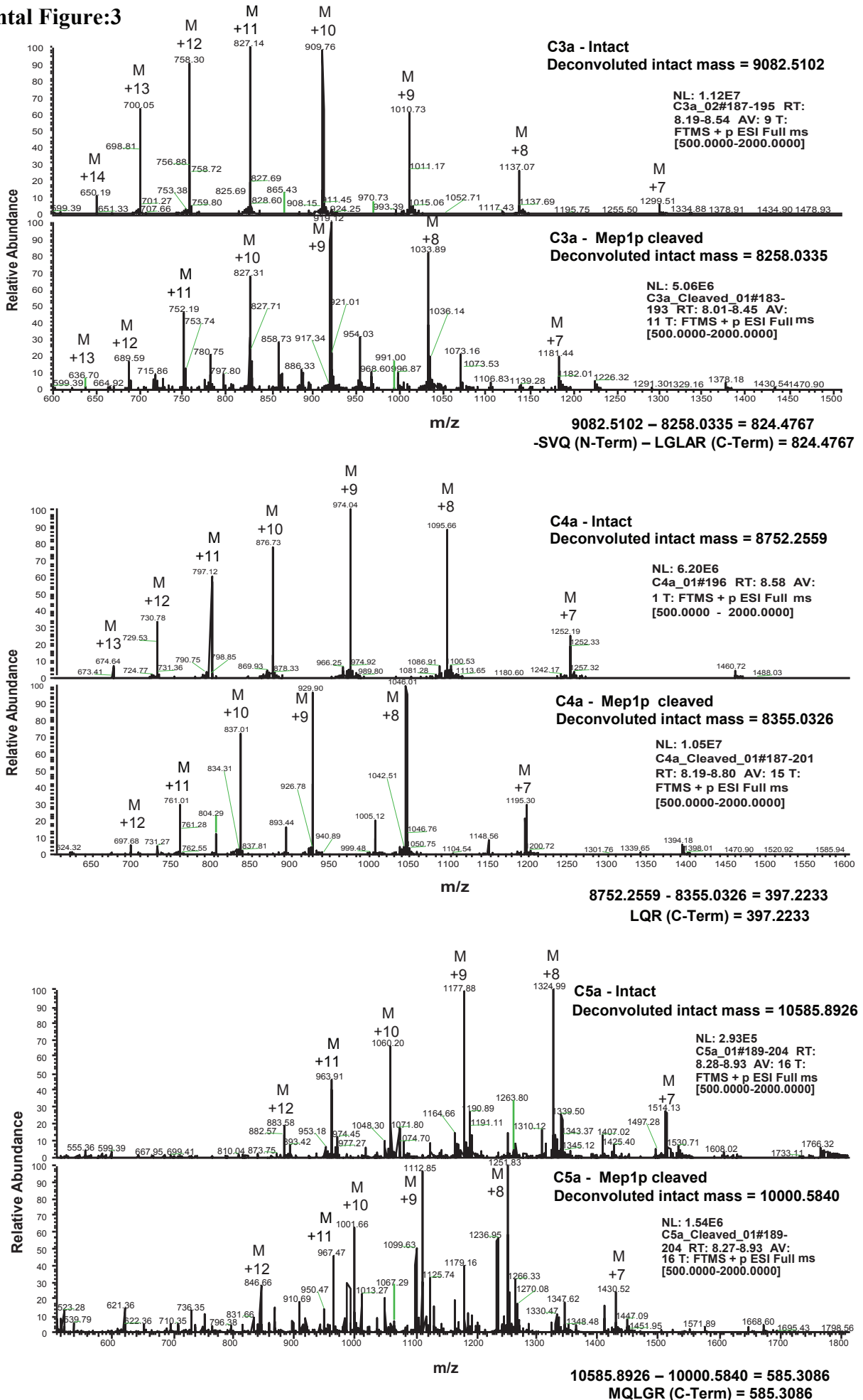


Figure S3: Electrospray ionization mass spectrum of Mep1p cleaved complement components C3a, C4a and C5a.