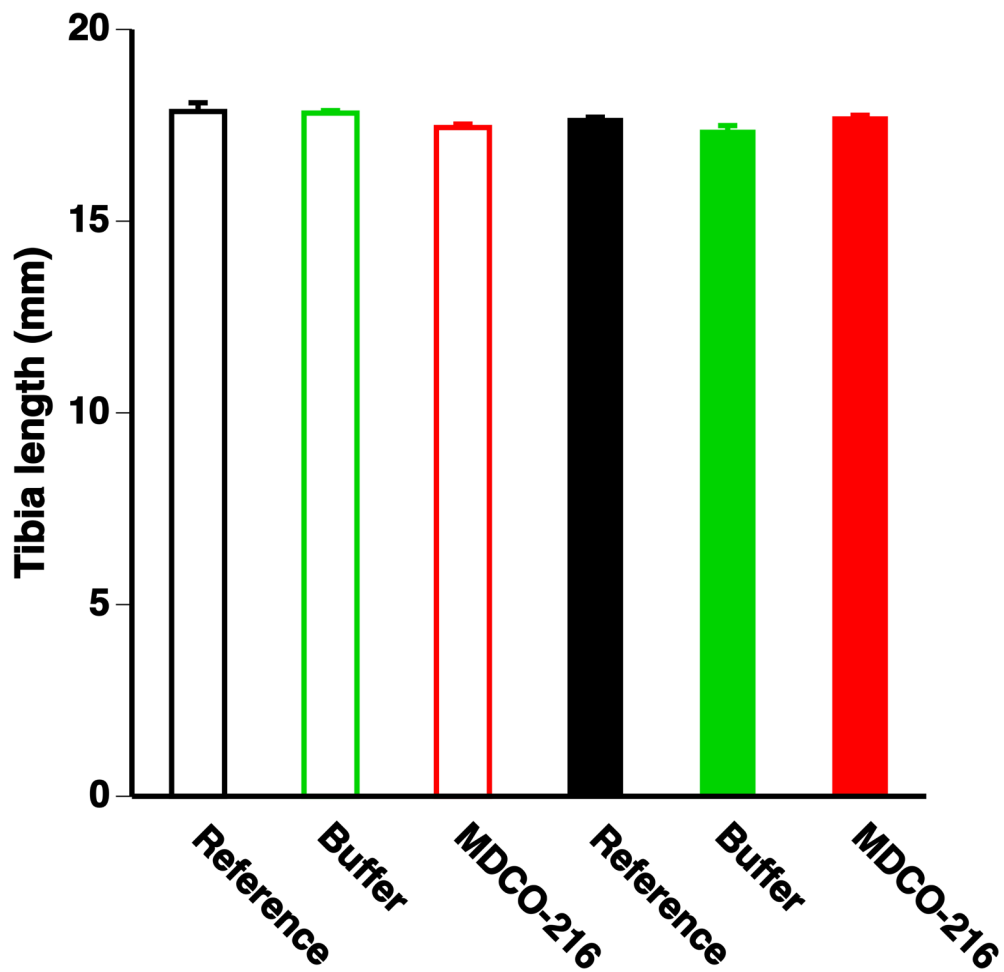


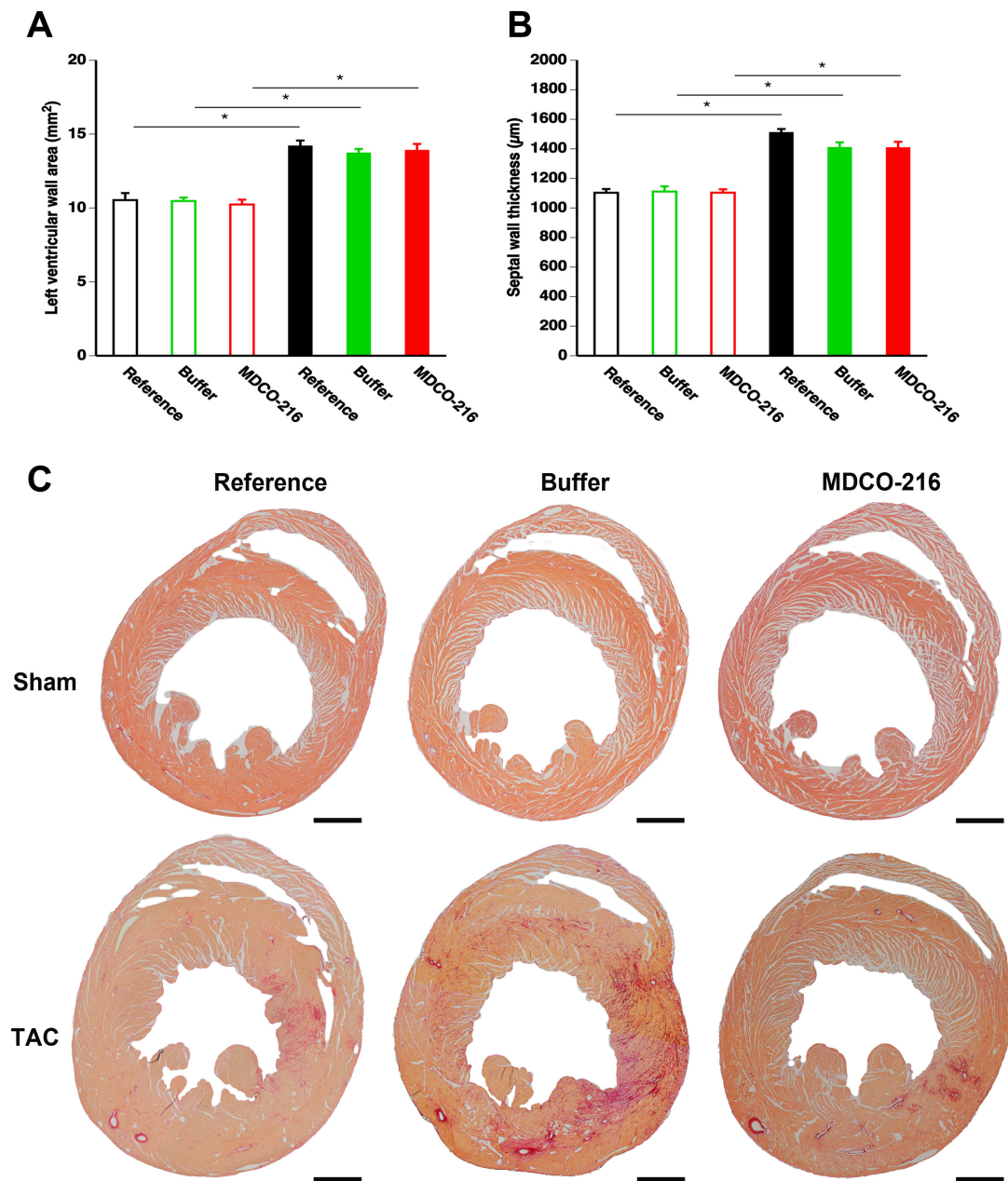
ONLINE DATA SUPPLEMENTS

**Successful treatment of established heart failure in mice with
recombinant HDL (Milano)**

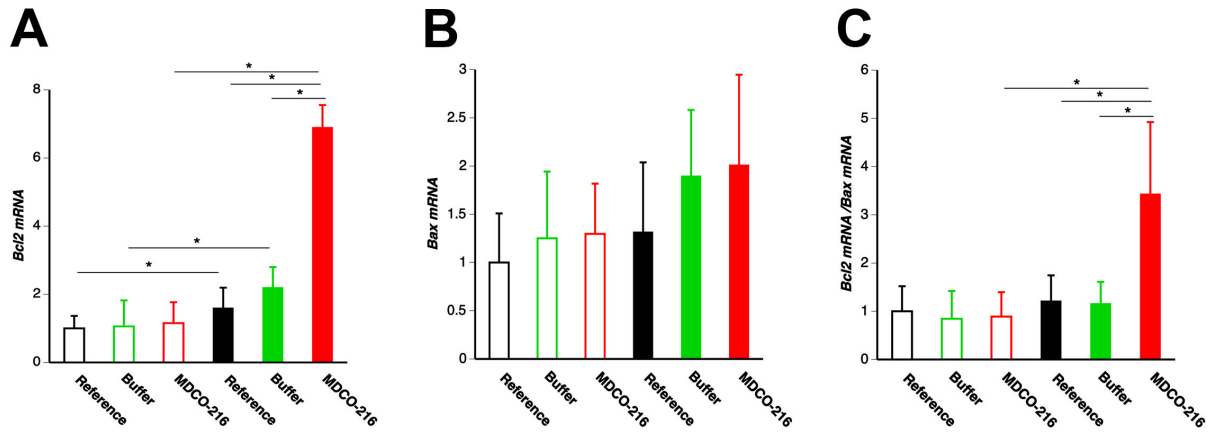
SUPPLEMENTAL FIGURES



Supplemental Figure 1. Tibia length in C57BL/6 sham mice and in C57BL/6 TAC mice. Data reflect measurements at day 56 (reference mice) and at day 65 (buffer mice and MDCO-216 mice) after sham operation (n=10 for reference mice, n=11 for buffer mice, n=11 for MDCO-216 mice) or TAC (n=12 for reference mice, n=12 for buffer mice, n=10 for MDCO-216 mice). Sham mice and TAC mice are indicated by open bars and closed bars, respectively.



Supplemental Figure 2. TAC induces left ventricular hypertrophy. Bar graphs showing the left ventricular wall area (A) and septal wall thickness (B) in reference sham mice (n=11), buffer sham mice (n=12), MDCO-216 sham mice (n=10), reference TAC mice (n=21), buffer TAC mice (n=17), and MDCO-216 TAC mice (n=21) at day 56 (reference mice) and at day 65 (buffer mice and MDCO-216 mice) after sham or TAC operation. Sham mice and TAC mice are indicated by open bars and closed bars, respectively. All data represent means \pm SEM. *: $p < 0.05$. Panel C shows representative Sirius red-stained cross-sections of sham hearts and TAC hearts. Scale bar represents 1 mm.



Supplemental Figure 3. Myocardial mRNA levels of apoptotic markers. Bar graphs showing normalized myocardial mRNA levels of *Bcl2* (A) and *Bax* (B) quantified by RT-qPCR. The *Bcl2 mRNA/Bax mRNA* ratio is shown in panel C. Data are expressed as geometric means \pm geometric standard error (n=8). *: p<0.05.

SUPPLEMENTAL TABLES

Supplemental Table 1. Primers and probe sequences for real-time quantitative reverse transcription PCR.

Gene	Assay ID	Primer 1	Primer 2	Probe
<i>Bcl2</i>	Mm.PT.58.7362966	CCAGGAGAAATCAAACAGAGGT	GATGACTGAGTACCTGAACCG	CAGGATAACGGAGGCTGGGATGC
<i>Bax</i>	Mm.PT.58.14012210	GCCATCAGCAAACATGTCAG	GGAGATGAACTGGACAGCAAT	CGTCAGCAATCATCCTCTGCAGCT
<i>Nppa</i>	Mm.PT.58.12973594.g	CTCCTTGGCTGTTATCTTCGG	GGGTAGGATTGACAGGATTGG	CCAGAGTGGACTAGGCTGCAACAG
<i>Nppb</i>	Mm.PT.58.8584045.g	CTTCTACAACAACCTCAGTGC	AGGTGACACATATCTCAAGCTG	CGATCCGGTCTATCTTGTGCCA
<i>Myh6</i>	Mm.PT.58.31314128	AAGTAGAGCTTCATCCATGGC	GCGCATTGAGTTCAAGAAGATAG	TGAAGGCCCGAATGTTCCACTGG
<i>Myh7</i>	Mm.PT.58.17465550.g	CTGGTGAGGTCATTGACAGAA	CAACATGGAGCAGATCATCAAG	AAGACCAGATGAATGAGCACCGGAG
<i>Col1a1</i>	Mm.PT.58.7562513	CATTGTGTATGCAGCTGACTTC	CGCAAAGAGTCTACATGTCTAGG	CCGGAGGTCCACAAAGCTGAACA
<i>Col3a1</i>	Mm.PT.58.13848686	TCTCTAGACTCATAGGACTGACC	TTCTTCTCACCTTCTTCATCC	CATCTACGTTGGACTGCTGTGCCA
<i>Mmp2</i>	Mm.PT.58.9606100	AACTTCACGCTCTTGAGACTT	GAATGCCATCCCTGATAACCT	CACCCTTGAAGAAGTAGCTATGACCACC
<i>Mmp9</i>	Mm.PT.58.10100097	GTGGGAGGTATAGTGGGACA	GACATAGACGGCATCCAGTATC	TCGGCTGTGGTTCAGTTGTGGT
<i>Flt1</i>	Mm.PT.58.43852013	AGGTCGTAGAGCCACTGAT	CAGAGCCAGGAACATATACACA	CTCGTTAGAGATTCGGAAGCGCCA
<i>Kdr</i>	Mm.PT.58.5869721	GGATCTTGAGTTCAGACATGAGG	GGAATTGACAAGACAGCGACT	AAGAAGGAGCAACACACAGCGAGC
<i>Cdh5</i>	Mm.PT.58.8747496	TGGTCTTGCGGATGGAGTA	CAGCGACACTTCTACCACTTC	AGCGGTTTCTTCTGGTTTTCTGGC
<i>Tuba1a</i>	Mm.PT.58.13069923	TCTTGTCACCTGGCATCTGG	CGCGAAGCAGCAACCAT	CATGTTCCAGGCAGTAGAGCTCCC
<i>Gapdh</i>	Mm.PT.39a.1	GTGGAGTCATACTGGAACATGTAG	AATGGTGAAGGTCGGTGTG	TGCAAATGGCAGCCCTGGTG
<i>Eef1e1</i>	Mm.PT.56a.17175143	TGACTAGATGGGTGGCGAT	GGGAATAAGTACAGTGCTCAGG	AGCGGCAGATTCCAGTTCTACAGAC

Supplemental Table 2. Total, non-HDL, HDL cholesterol, and triglyceride plasma levels in C57BL/6 mice at time of sacrifice.

	Reference sham	Buffer sham	MDCO-216	Reference TAC	Buffer TAC	MDCO-216 TAC
Number of mice	8	8	8	8	8	8
Total cholesterol	1.71 ± 0.09	1.91 ± 0.13	1.85 ± 0.13	1.73 ± 0.11	1.86 ± 0.11	1.83 ± 0.16
Non-HDL cholesterol	0.457 ± 0.048	0.503 ± 0.046	0.553 ± 0.057	0.530 ± 0.060	0.573 ± 0.055	0.453 ± 0.057
HDL cholesterol	1.26 ± 0.09	1.41 ± 0.10	1.30 ± 0.13	1.20 ± 0.06	1.29 ± 0.07	1.38 ± 0.16
Triglycerides	0.711 ± 0.105	0.782 ± 0.115	0.598 ± 0.072	1.06 ± 0.07	1.06 ± 0.15	0.995 ± 0.113 [§]

Data are expressed in mmol/L and represent means + SEM. Reference mice were sacrificed at day 56 whereas buffer mice and MDCO-216 mice were sacrificed at day 65. §: p<0.05 versus respective sham group.