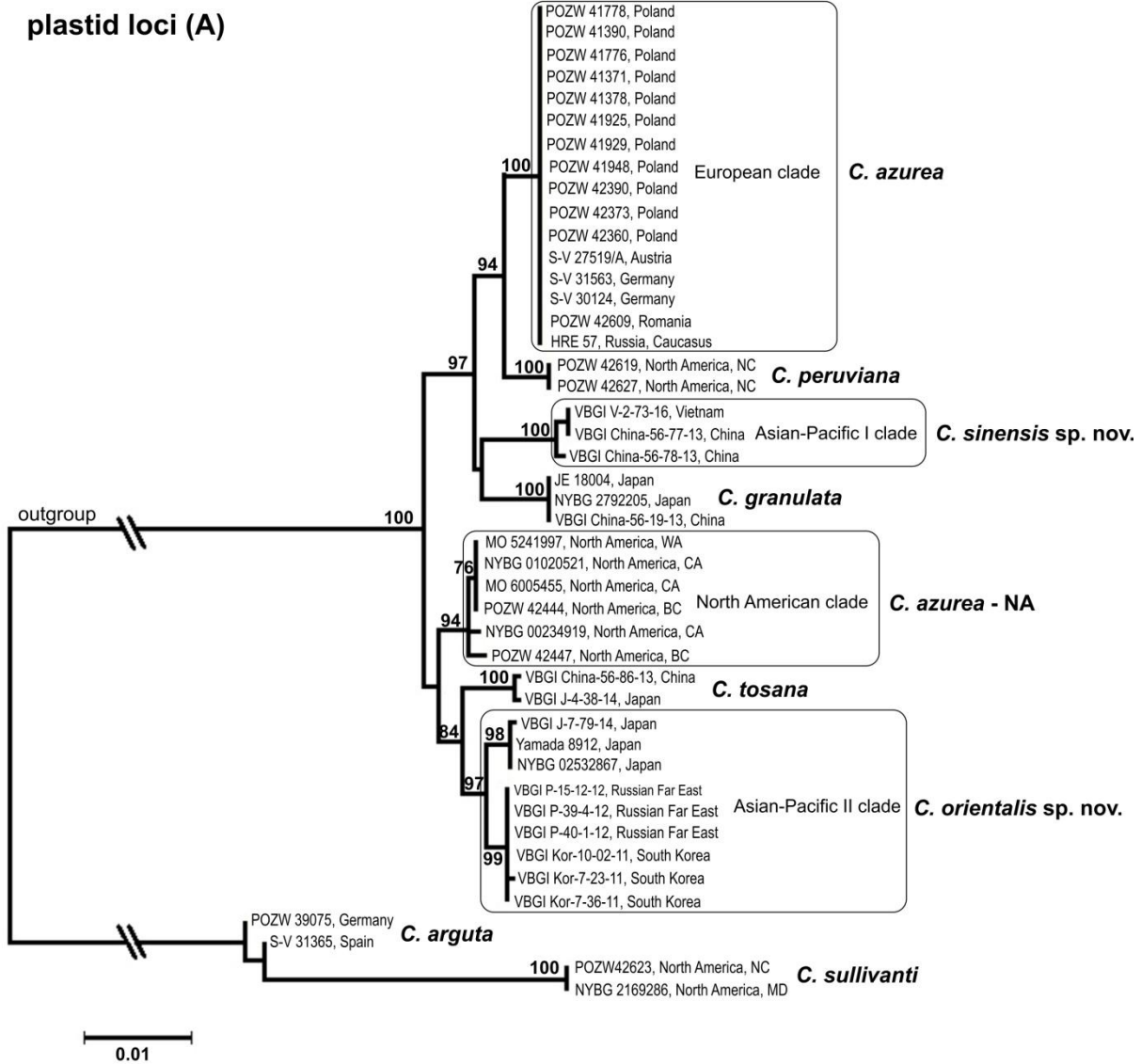
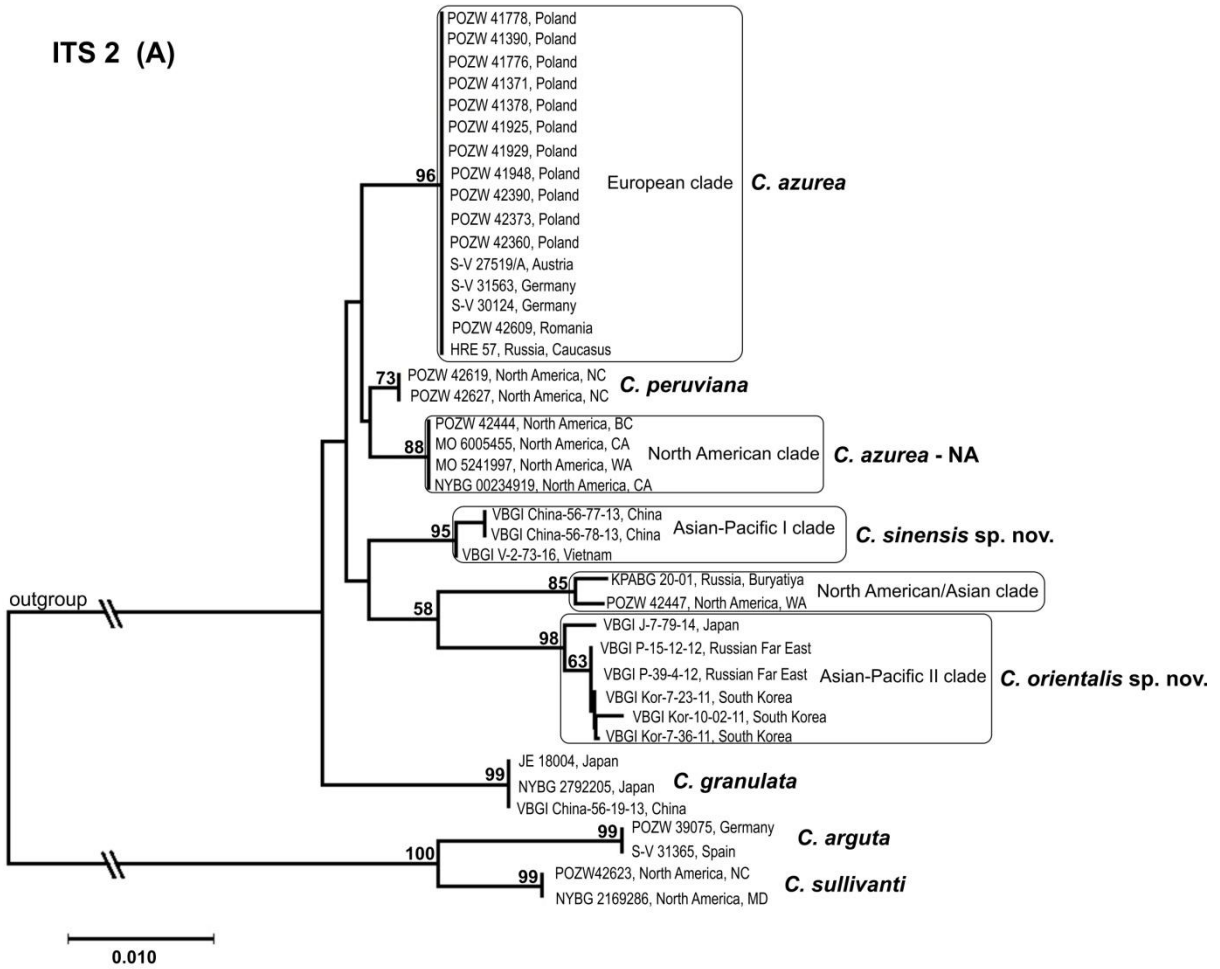


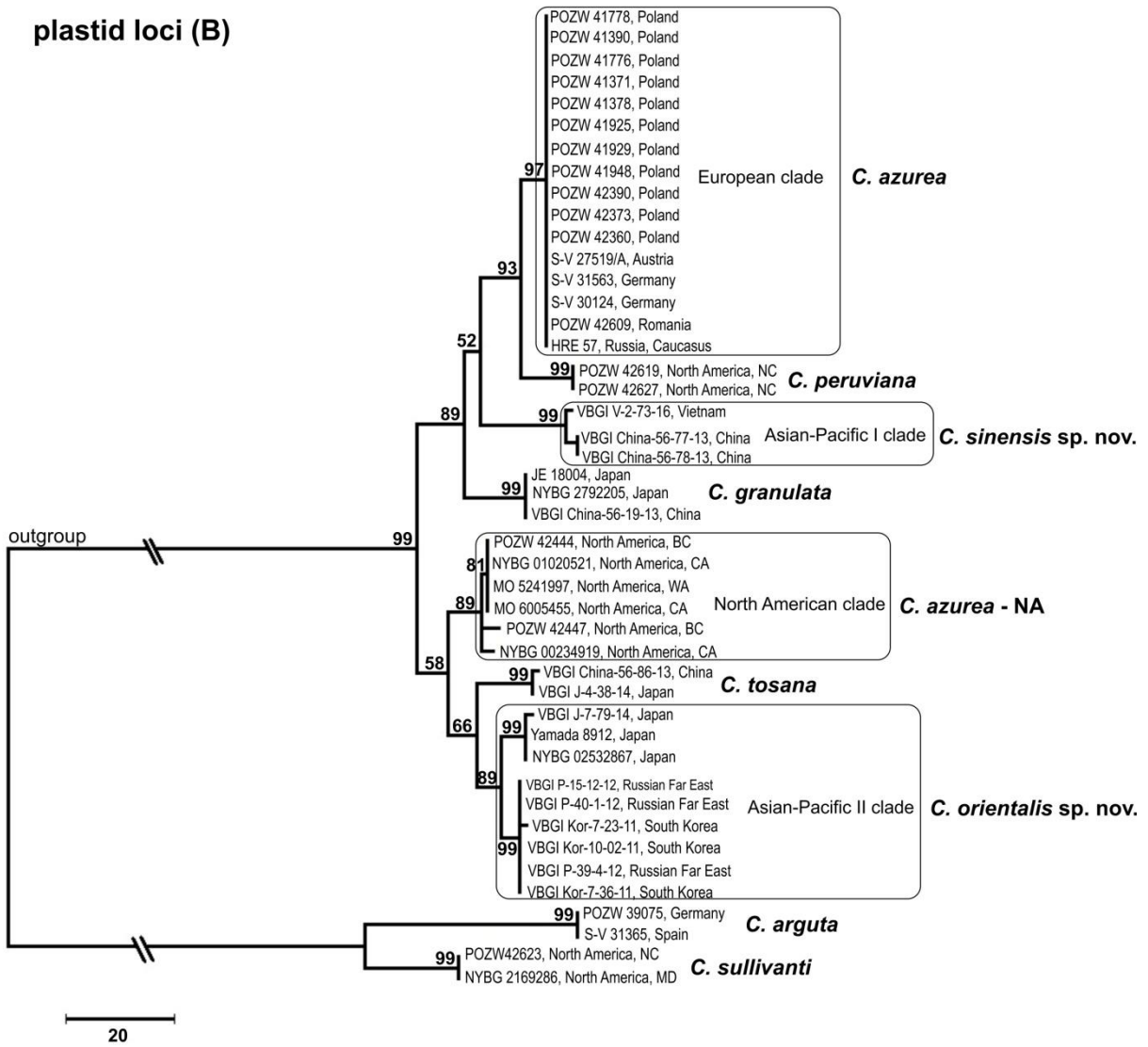
S1 Fig. Neighbor joining (A) and maximum parsimony (B) consensus trees of the *Calypogeia azurea* complex. The analyses were performed separately for a combined plastid loci and nuclear ITS2. Only the accessions with complete sequences of all loci were included in the analysis. The related taxa (*C. peruviana*, *C. granulata*, *C. tosana*) were used for comparison. *Calypogeia arguta* and *C. sullivantii* were used as an outgroup. Bootstrap values above 50% are given above the branches.



ITS 2 (A)



plastid loci (B)



ITS 2 (B)

