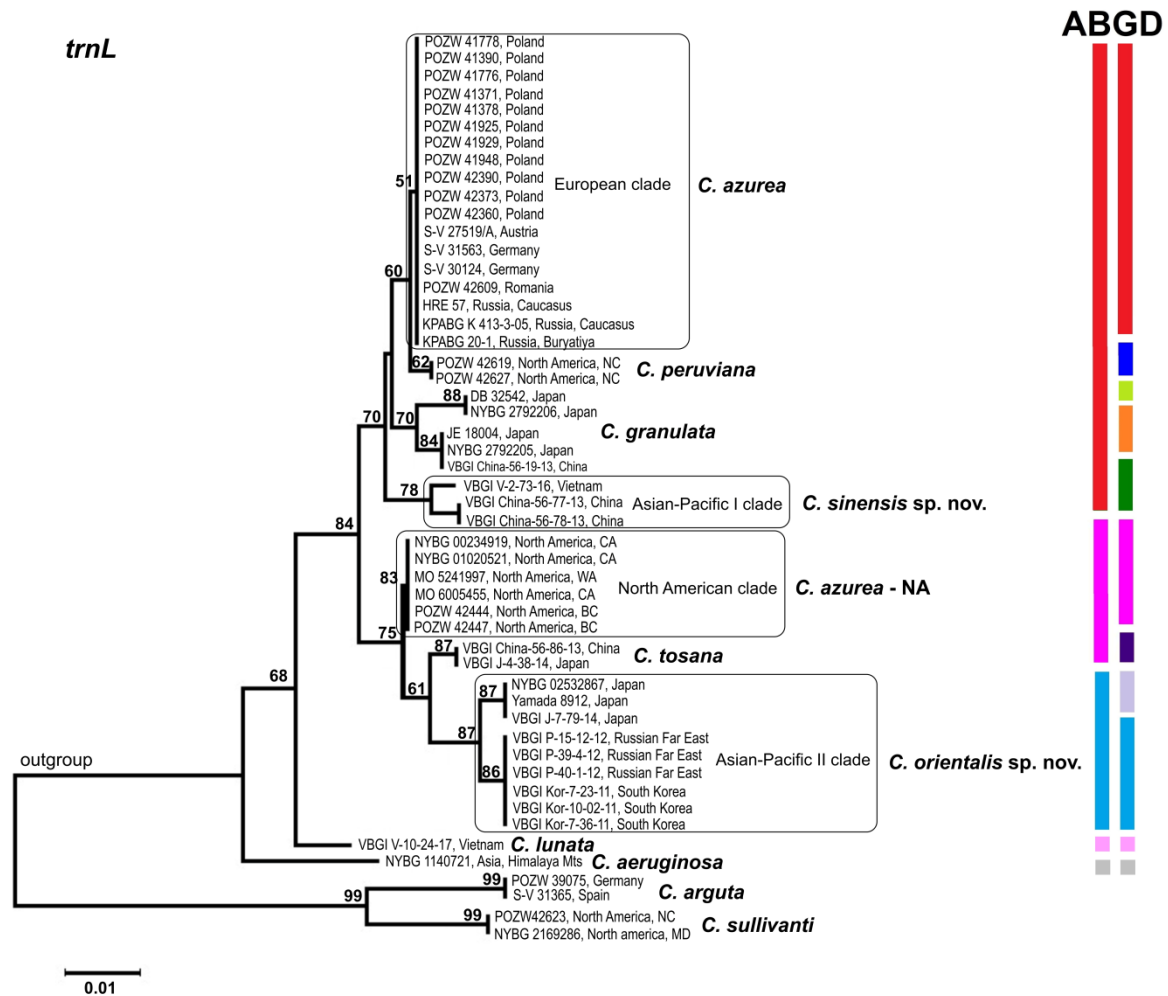
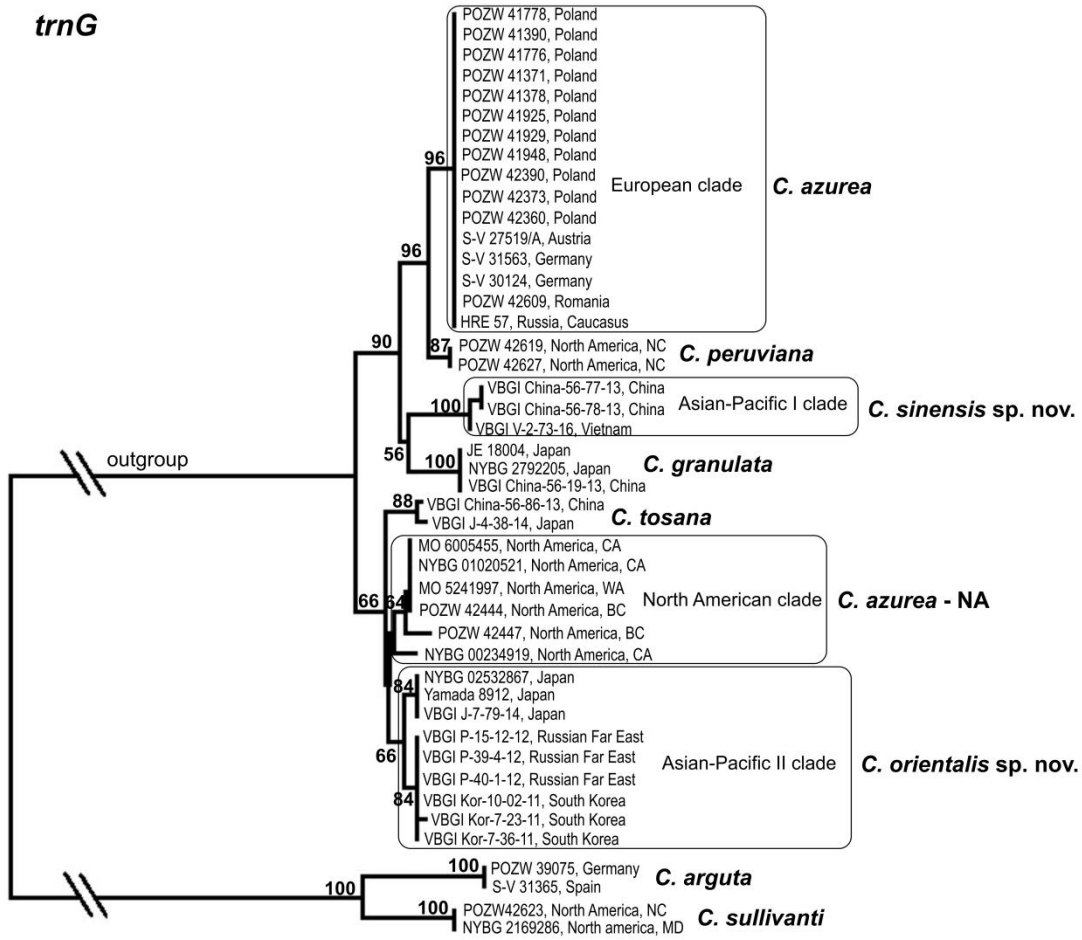


**S2 Fig. Neighbor-joining trees of the *Calypogeia azurea* complex.** The results of the ABGD analysis of individual loci are represented by colored stripes on the right side of the diagram. The first bar represents the initial partition, and the second bar represents the recursive partition. The related taxa (*C. peruviana*, *C. granulata*, *C. aeruginosa*, *C. lunata* and *C. tosana*) were used for comparison. *Calypogeia arguta* and *C. sullivanti* were used as an outgroup. Bootstrap values above 50% are given above the branches.



trnG

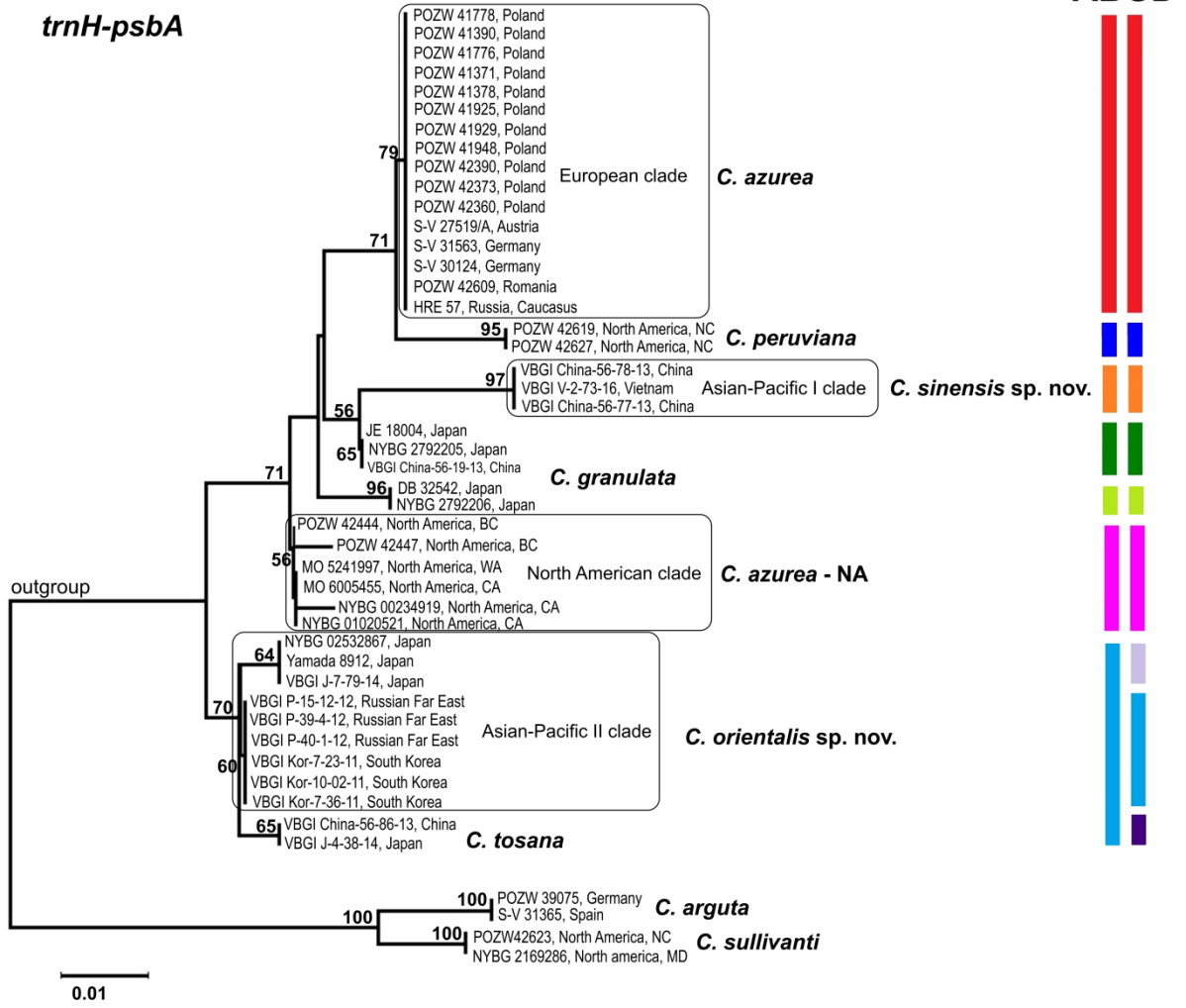


ABGD

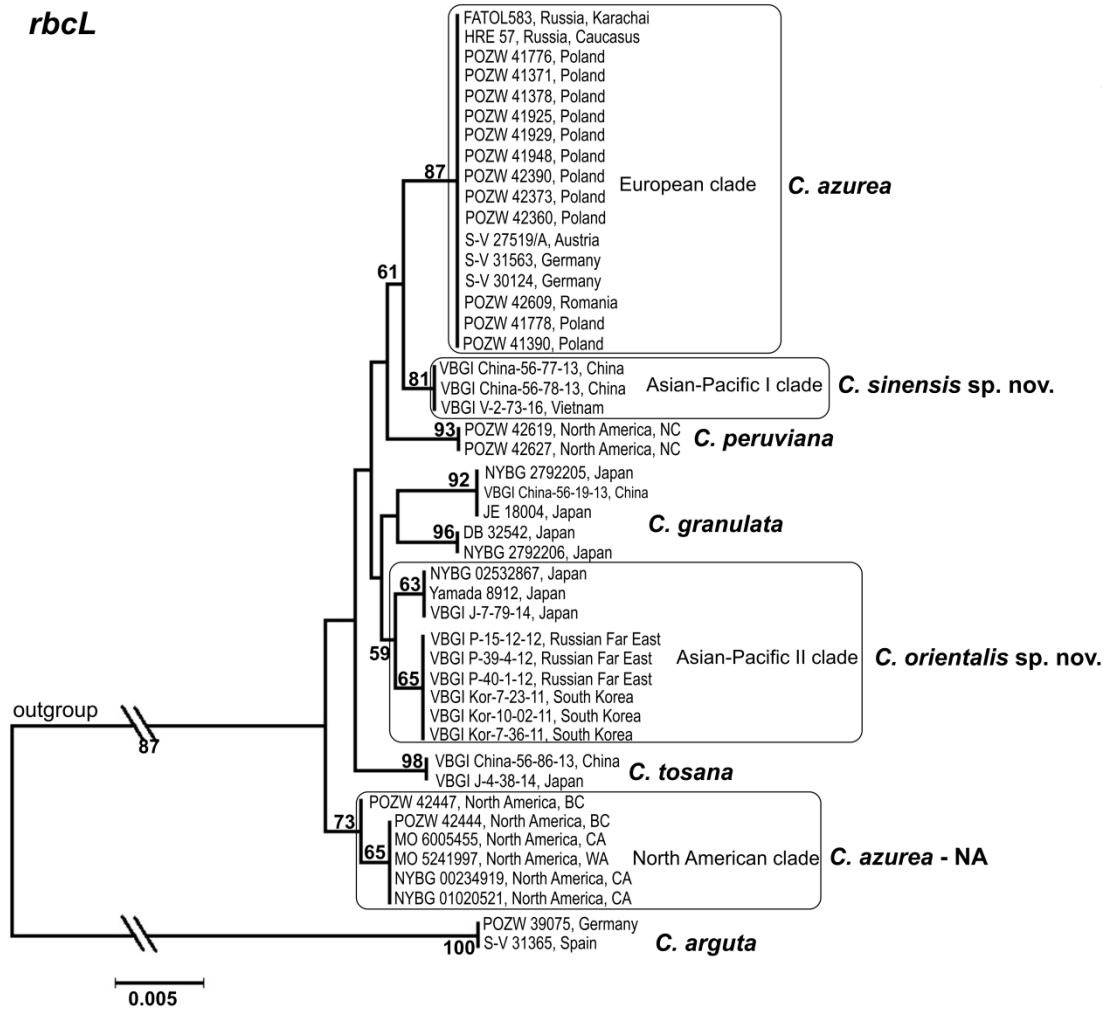


0.02

*trnH-psbA*



*rbcL*



ABGD

