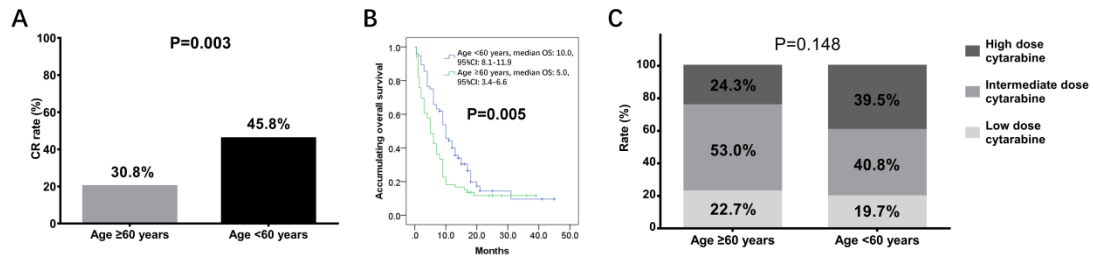


Supplementary Figure 1. Treatment response in groups classified by dose and comparison of outcomes between CLAG and FLAG regimens. **(A)** No difference of CR was found among low dose cytarabine group, intermediate cytarabine group and high cytarabine group; **(B)** No difference of CR was observed between CLAG group and FLAG group; **(C)** No difference of OS was found among low dose cytarabine group, intermediate cytarabine group and high cytarabine group; **(D)** No difference of OS was observed between CLAG group and FLAG group. Comparison among groups were performed with Chi-squared test and log-rank test. $P < 0.05$ was considered significant.



Supplementary Figure 2. Treatment outcomes in groups classified by age. **(A)** CR in patients with age ≥ 60 years was reduced compared to patients with age < 60 years; **(B)** OS in patients with age ≥ 60 years was decreased compared to patients with age < 60 years; **(C)** No difference of rate in high dose cytarabine, intermediate dose cytarabine and low dose cytarabine was observed between patients with age ≥ 60 years and patients with age < 60 years. Comparison between groups were performed with Chi-squared test, log-rank test and Wilcoxon rank sum test. $P < 0.05$ was considered significant.

Supplementary Table 1. Adverse events

Items	FLAG (n=46)	CAG/DAG (n=30)	CLAG (n=27)	MEA (n=17)	IA/DA/MA (n=12)	HAA/HAD (n=10)
Febrile neutropenia (n/%)	41 (89.1)	25 (83.3)	23 (85.2)	14 (82.4)	10 (83.3)	8 (80.0)
Thrombocytopenia (n/%)	40 (87.0)	26 (86.7)	21 (77.8)	11 (64.7)	8 (66.7)	7 (70.0)
Infection (n/%)	31 (67.4)	19 (63.3)	18 (66.7)	5 (29.4)	4 (33.3)	6 (60.0)
Hemorrhage (n/%)	22 (46.8)	4 (13.3)	8 (29.6)	5 (29.4)	2 (16.7)	3 (30.0)
ALT or AST elevation (n/%)	6 (13.0)	2 (6.7)	2 (7.4)	4 (23.5)	0 (0.0)	0 (0.0)
Cardiotoxicity (n/%)	2 (4.3)	0 (0.0)	1 (3.7)	1 (5.9)	1 (8.3)	1 (10.0)
Nausea/vomiting (n/%)	16 (34.8)	7 (23.3)	13 (48.1)	2 (11.7)	1 (8.3)	4 (40.0)
Others (n/%)	5 (10.9)	2 (6.7)	4 (14.8)	2 (11.7)	2 (16.7)	2 (20.0)

Data were presented as count (%). ALT = alanine aminotransferase, AST = aspartate aminotransferase.