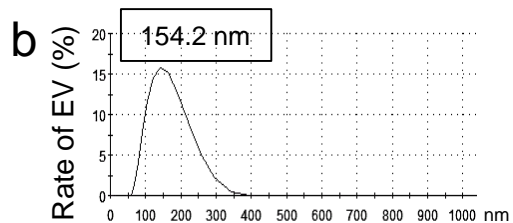
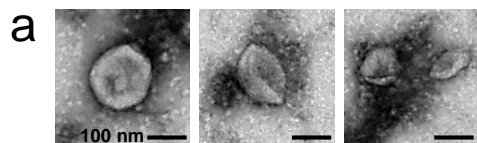
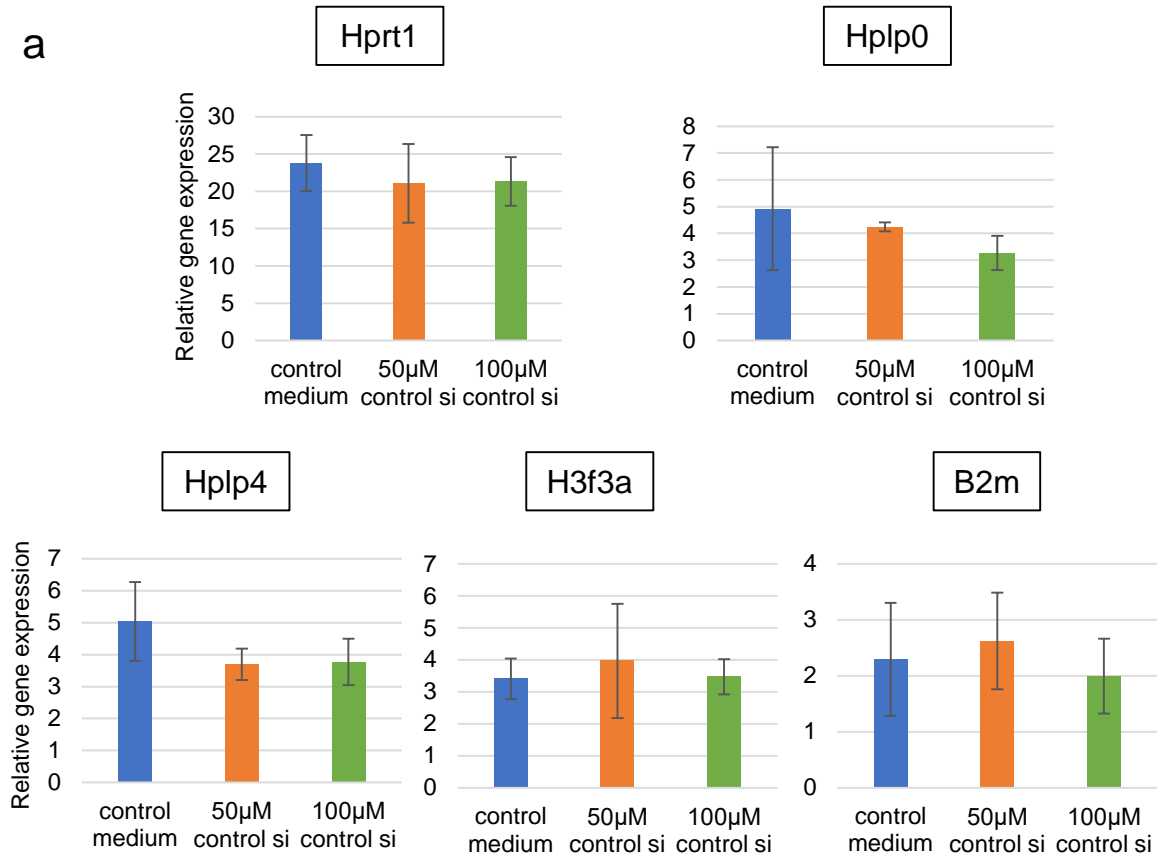


**c**

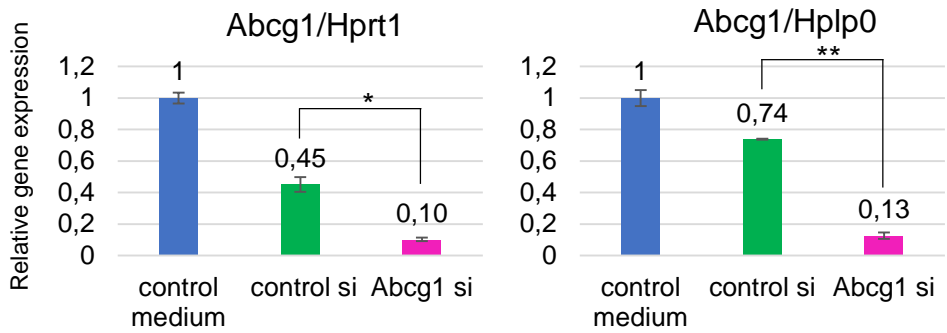
	Colon26	LuM1
Tumor incidence	1/5 (20%)	3/4 (75%)
Number of metastatic nodules	1.0 ± 1.0 (n = 5)	17.8 ± 9.9 (n=4)
Number of metastatic nodules in cases of metastases	5.0 (n = 1)	23.7 ± 11.3 (n = 3)



a



b



**Figure S4**

