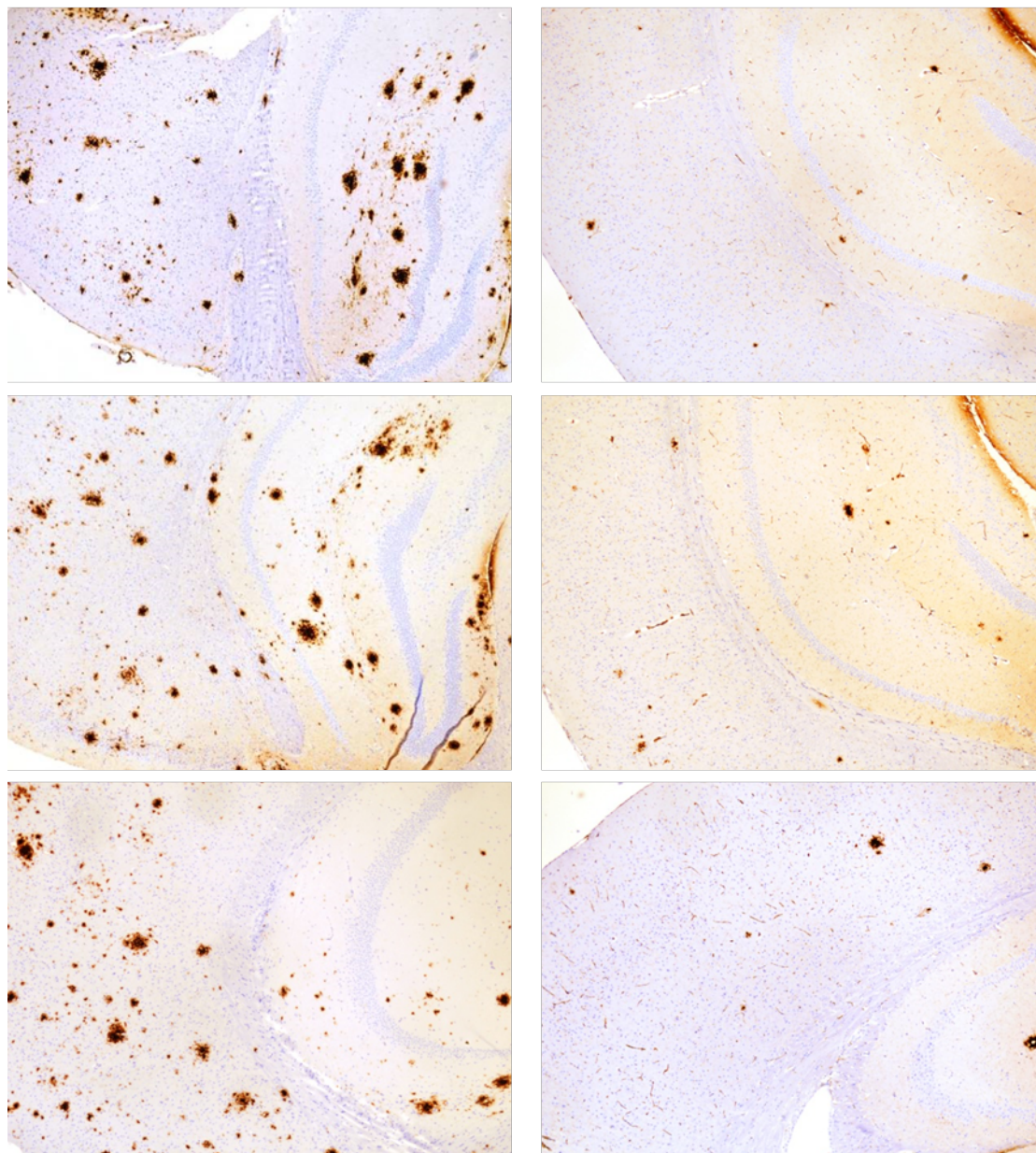


AD - ACE^{WT}AD - ACE^{10/10}

Supplemental Fig. 2. A mouse model of Alzheimer's disease was crossed such that the ACE genes were either WT or ACE 10/10. At 255 days of age, three mice of each genotype was studied for cortical amyloid deposits by immunohistochemistry. (These data were originally published in Ref. 104.)