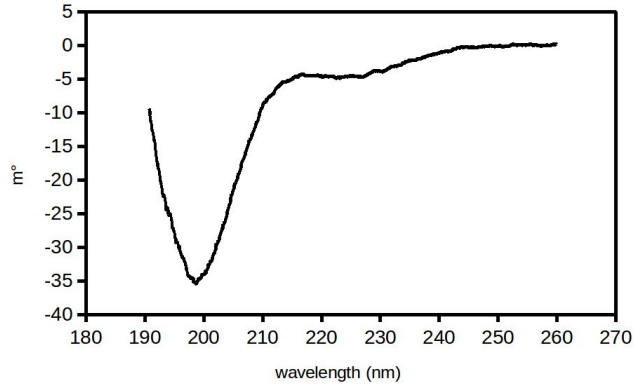
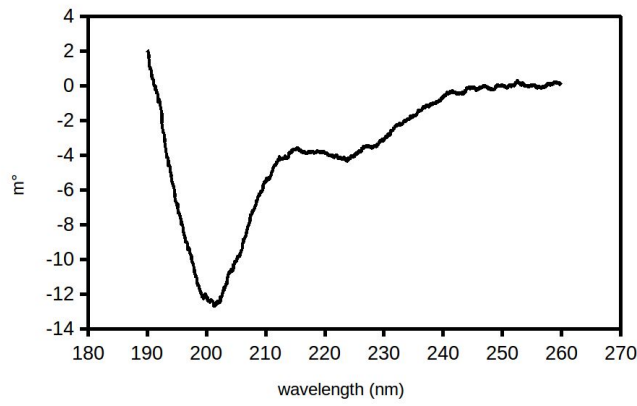


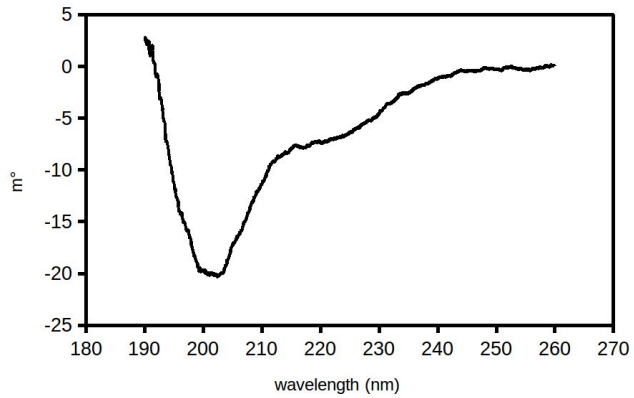
steady-state CD spectra at 20 °C for gHH\_47(K28Q)



steady-state CD spectra at 20 °C for gHEEE\_06(L1)



steady-state CD spectra at 20 °C for gHEEE\_06(L1+L2+L3)



**Supplementary Figure 1.** Steady state circular dichroism spectra for re-designed peptides reveals random-coil structural signatures.