

LB

EC1

MS2

MS3

JZL1

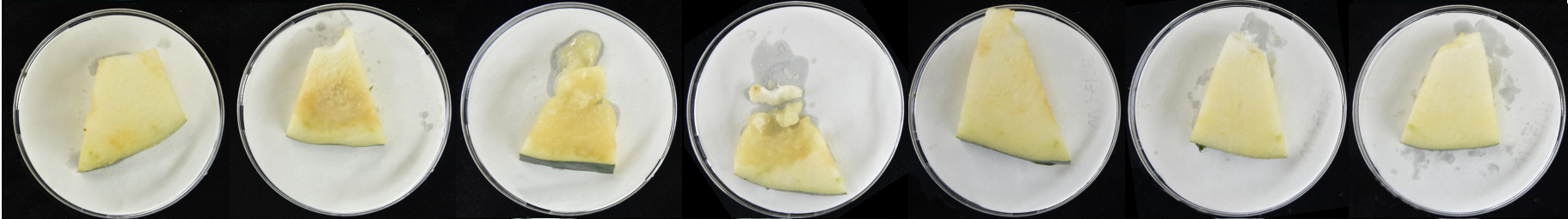
JZL2

JZL7

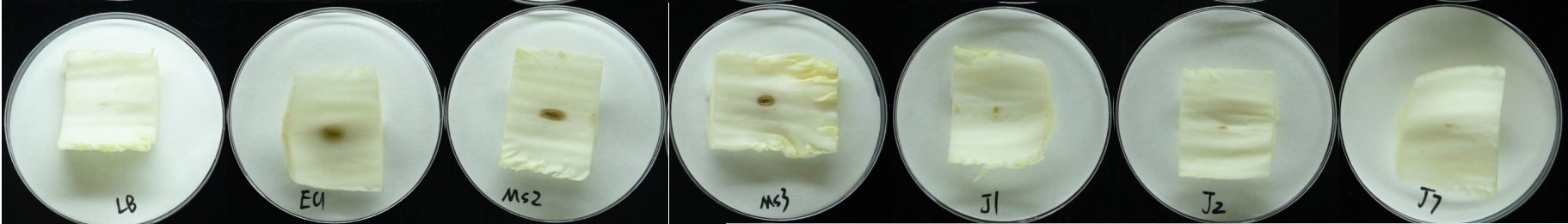
*Cucumis sativus*



*Benincasa hispida*



*Brassica pekinensis*



*Raphanus sativus*



*Daucus carota*



LB

EC1

MS2

MS3

JZL1

JZL2

JZL7

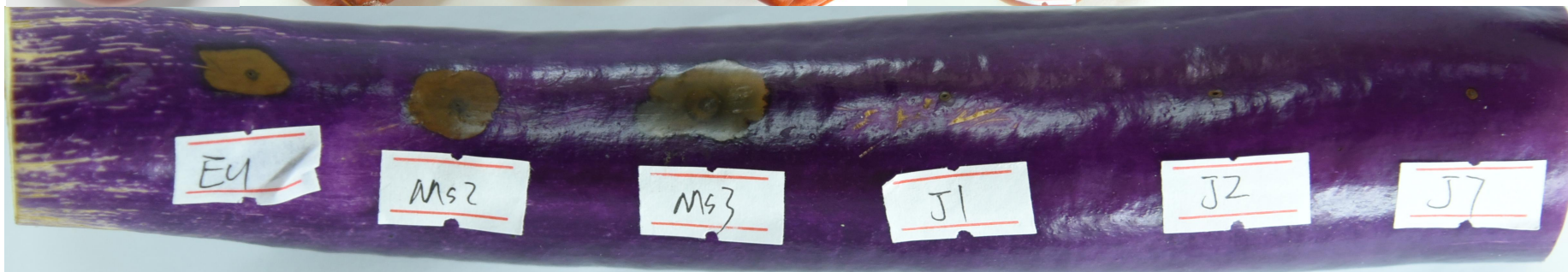
*Solanum tuberosm*



*Lycopersicon esculentum*

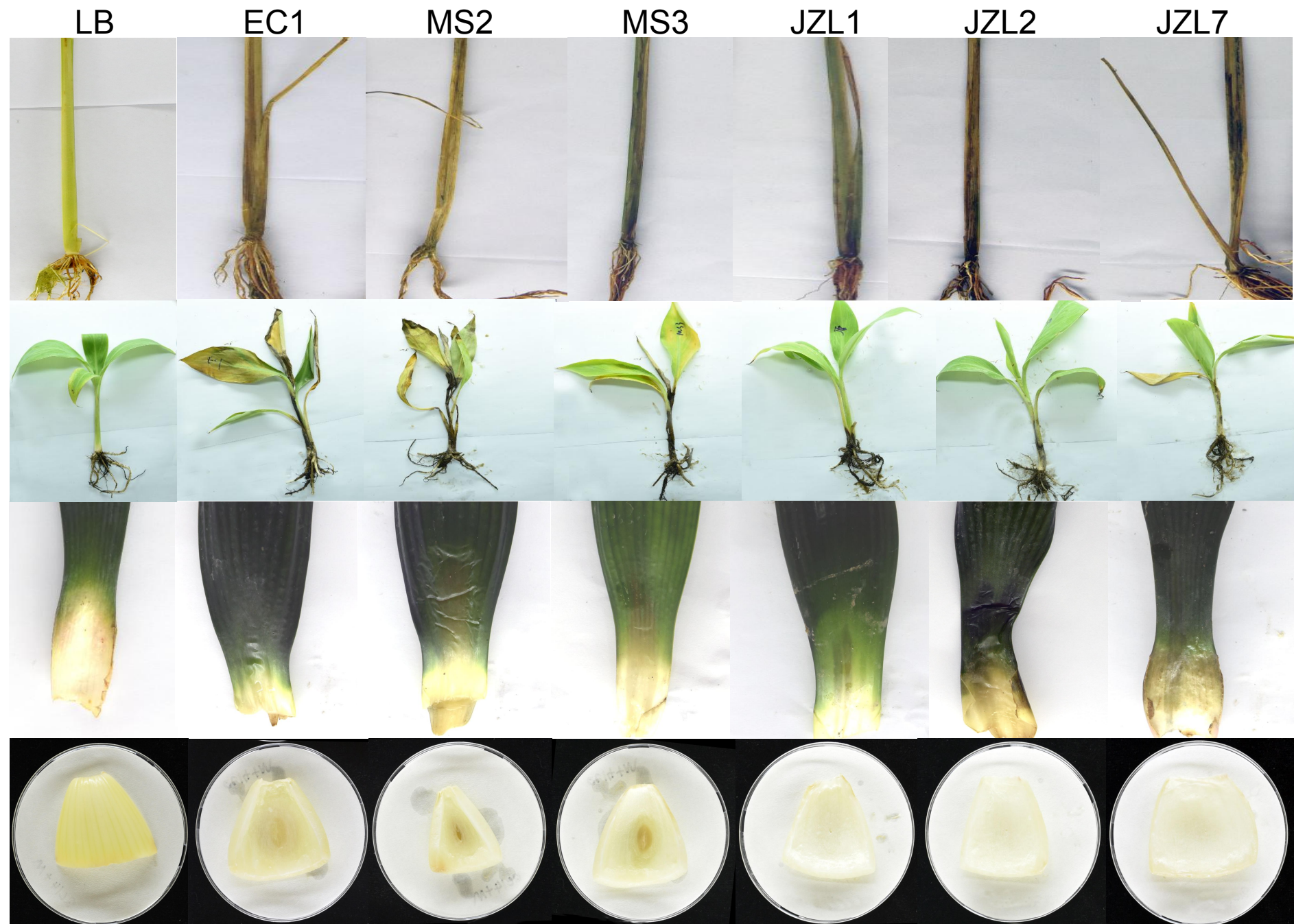


*Solanum melongena*



*Capsicum annuum*





LB

EC1

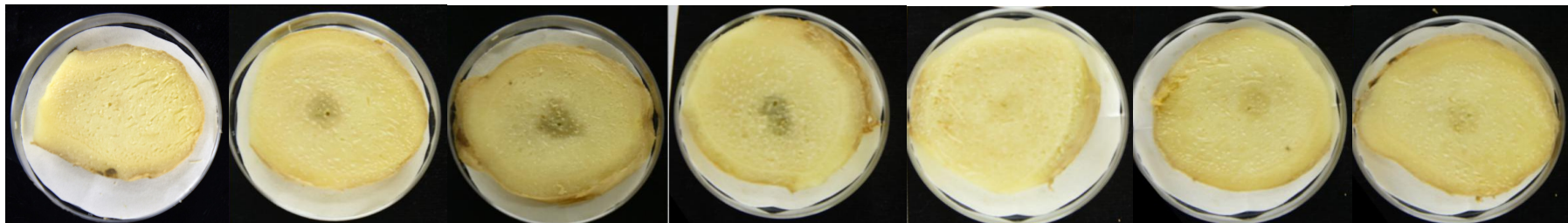
MS2

MS3

JZL1

JZL2

JZL7

*Zingiber officinale**Gladiolus gandavensis**Colocasia esculenta**Alocasia macrorrhiza*