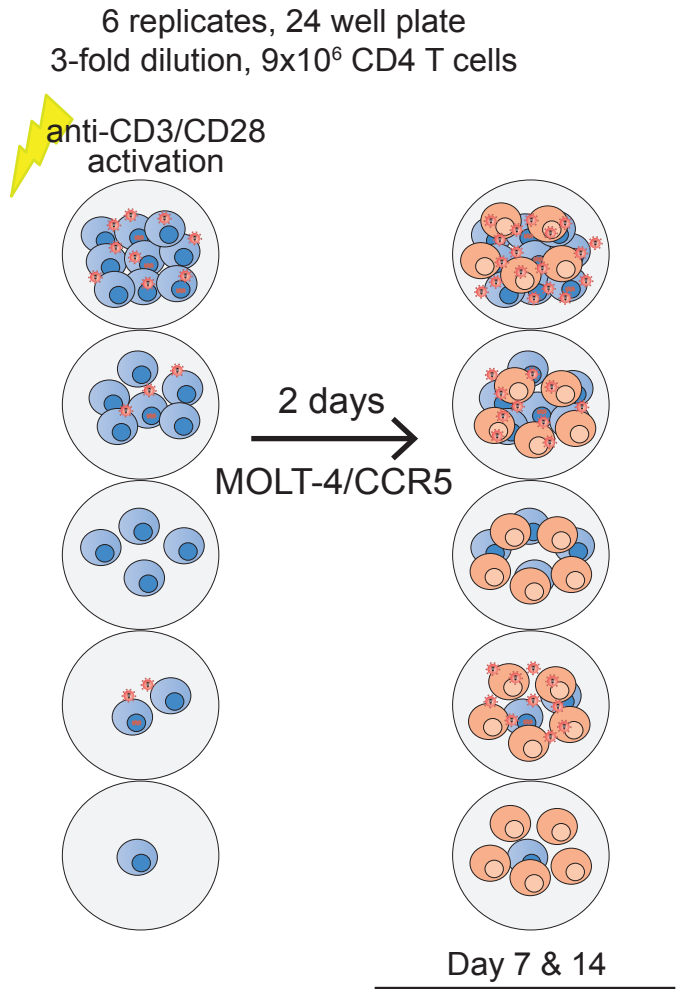


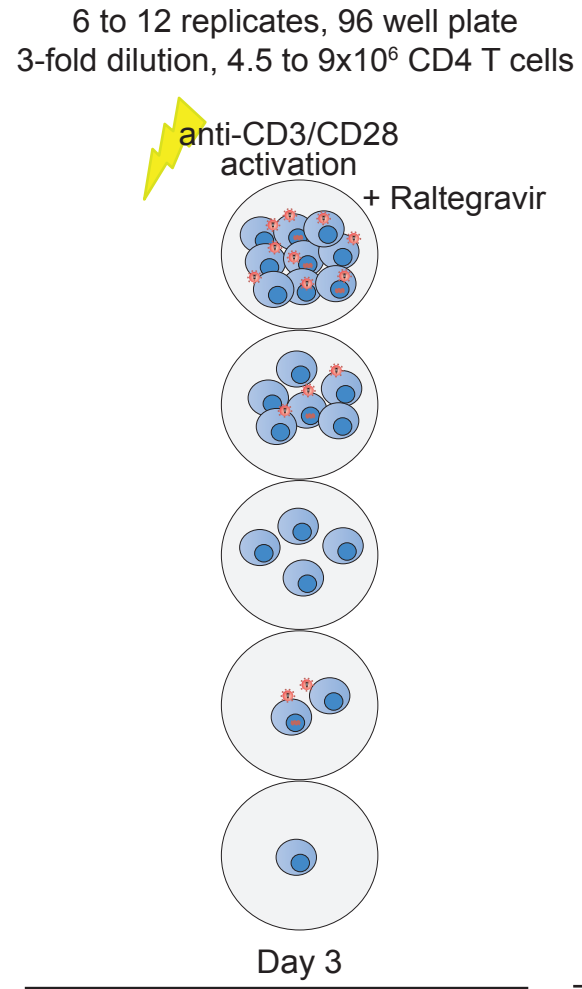
Supplementary figure 1.

A. mQVOA



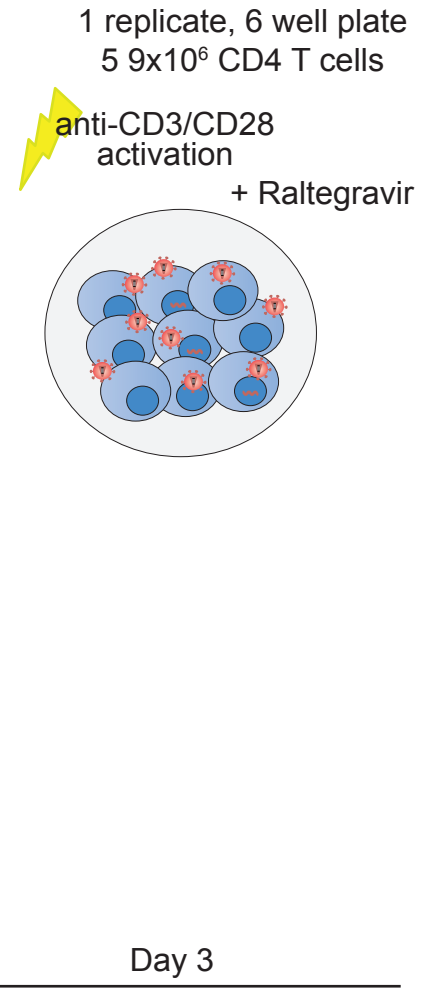
Specimen	Supernatant
RNA extraction method	Aptima HIV-1 (Hologic) ↓
PCR method	RT-PCR
Target	<i>pol</i>

B. Inducible RNA Assays in limiting dilution



Specimen	Supernatant	Cells
RNA extraction method	Aptima HIV-1 (Hologic) ↓	Magmax ↓
PCR method	ddPCR	ddPCR
Target	<i>gag</i>	<i>gag</i> <i>tat-rev</i>

C. Inducible RNA Assay in bulk



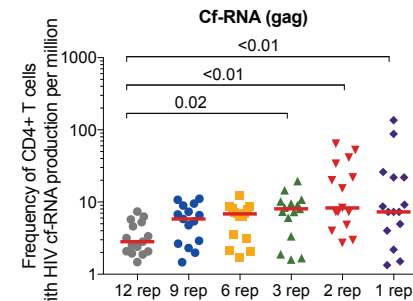
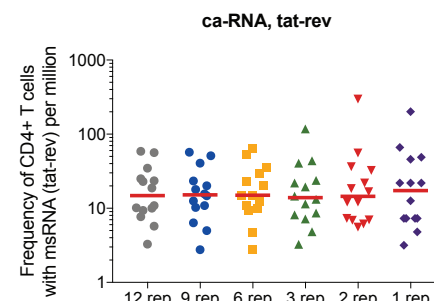
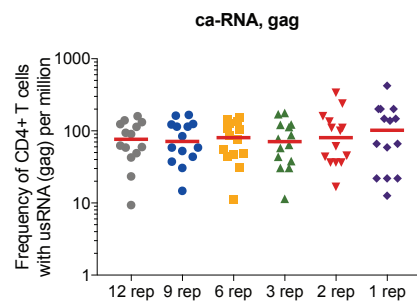
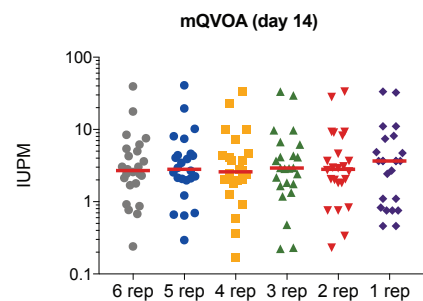
Specimen	Supernatant
RNA extraction method	Aptima HIV-1 (Hologic) ↓
PCR method	ddPCR
Target	<i>gag</i>

# Supplementary Figure 2

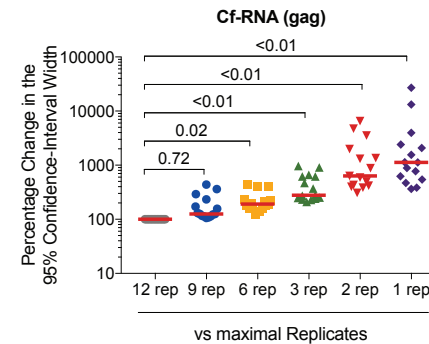
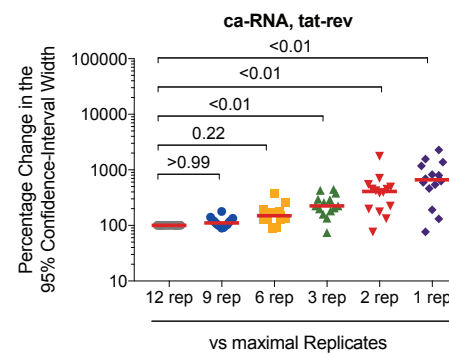
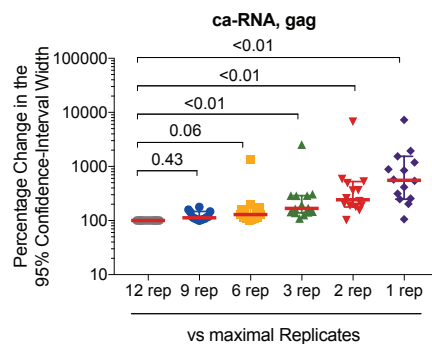
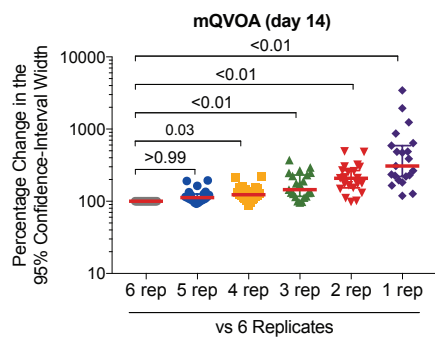
A.

mQVOA

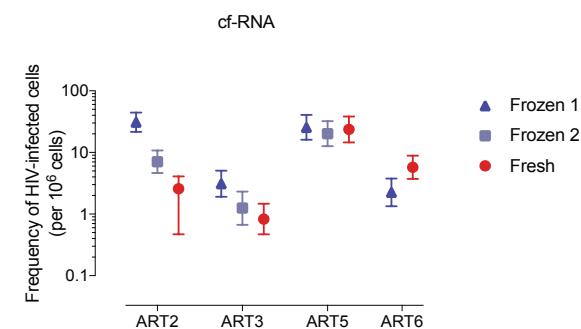
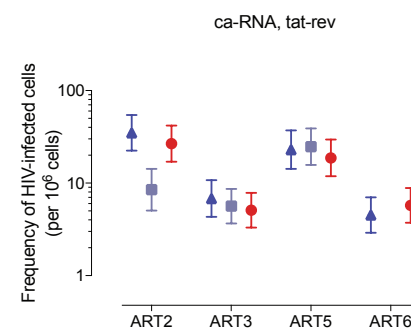
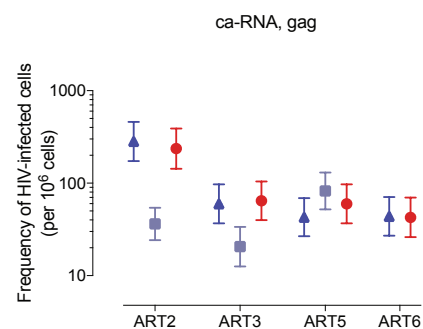
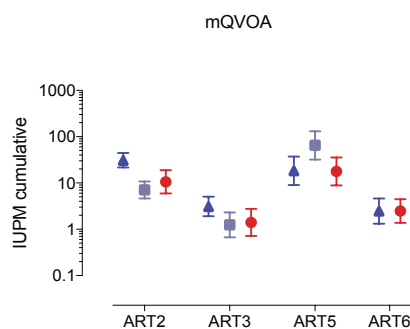
Inducible RNA



B.

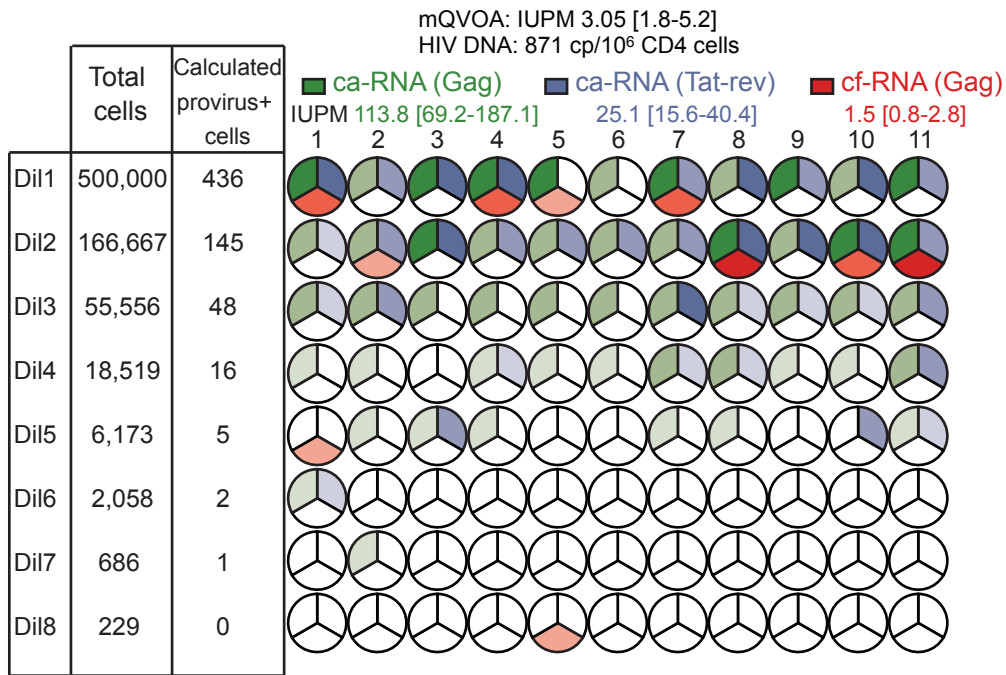


C.



# Supplementary figure 3

ART1



ART5

