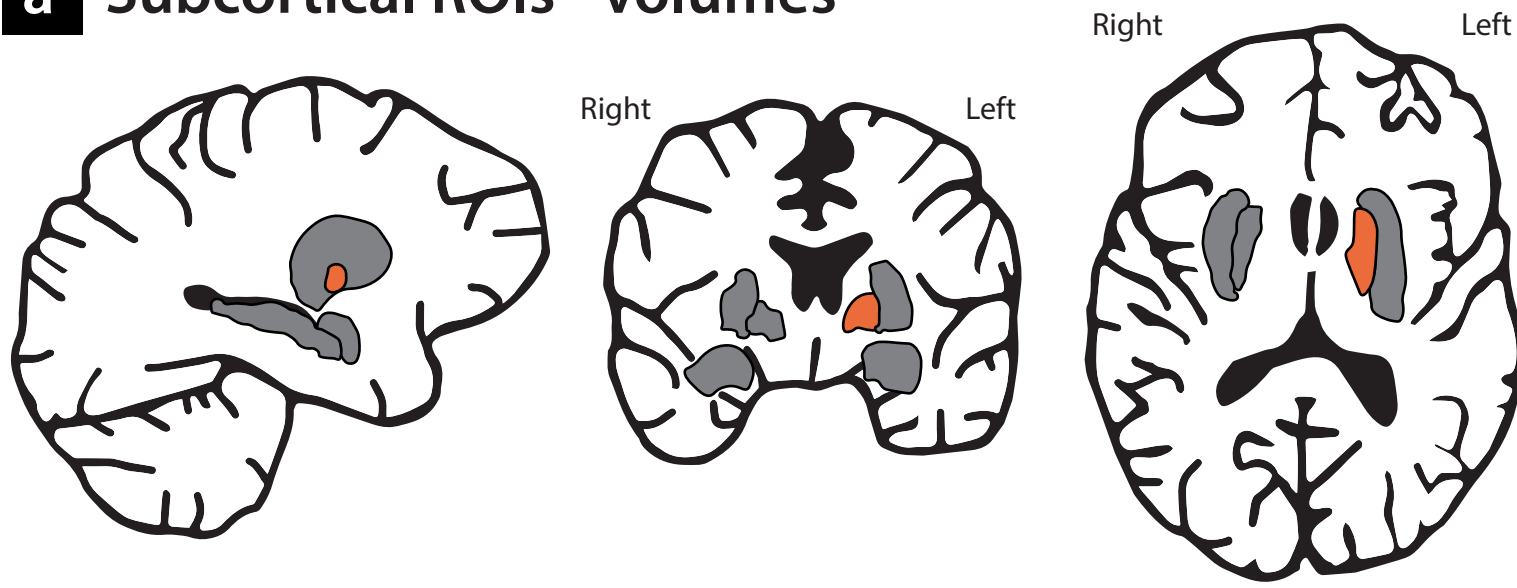


## a Subcortical ROIs - volumes



## Co-segregation with social anxiety within families

- Negative association, two significant measures
- Negative association, one significant measure
- Positive association, one significant measure
- Positive association, two significant measures
- No association
- No region of interest

## b Cortical ROIs - cortical thickness

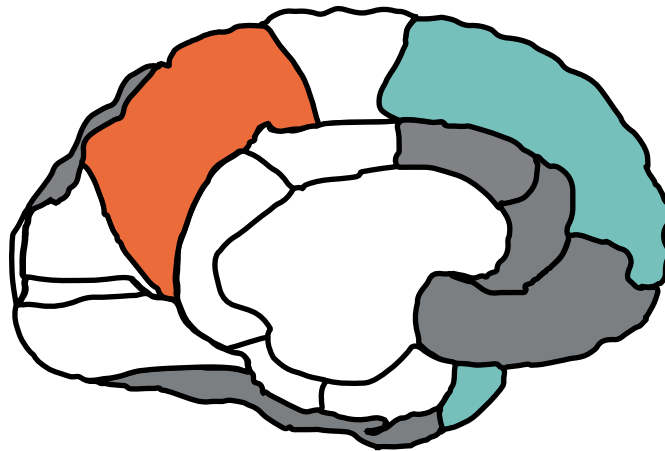
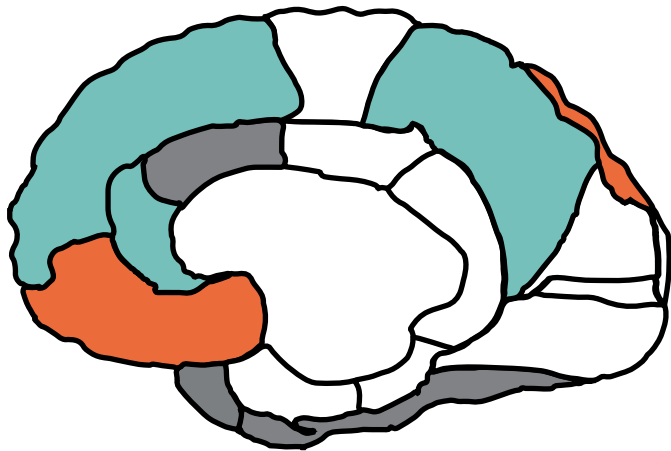
Lateral view - right hemisphere

Lateral view - left hemisphere



Medial view - right hemisphere

Medial view - left hemisphere

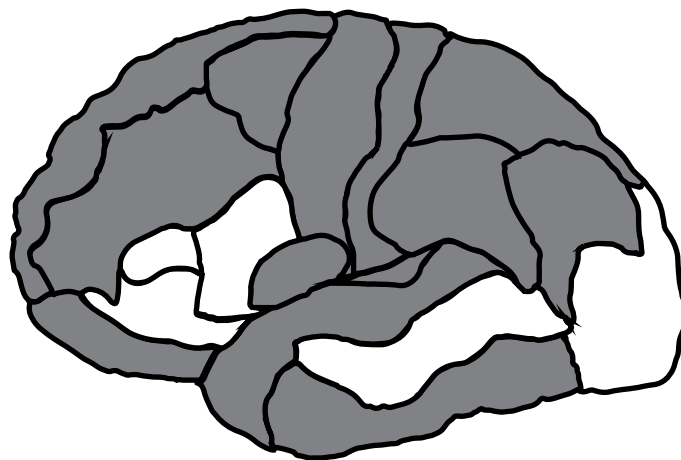


**Sensitivity analysis 1:**  
no participants with (comorbid) psychopathology other than (sub)clinical SAD

## c Cortical ROIs - cortical surface area

Lateral view - right hemisphere

Lateral view - left hemisphere



Medial view - right hemisphere

Medial view - left hemisphere

