

Figures S1. Related to Figure 1 and 2.

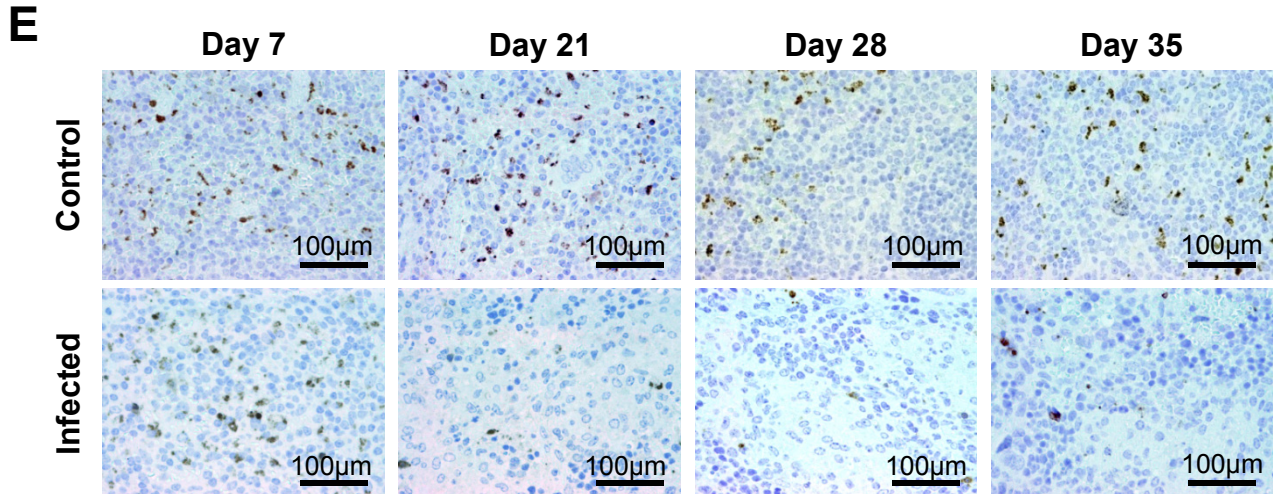
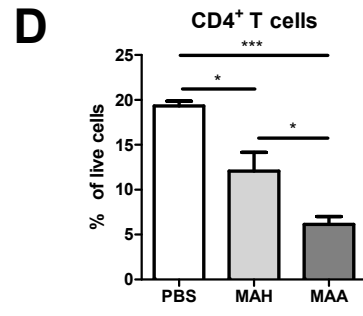
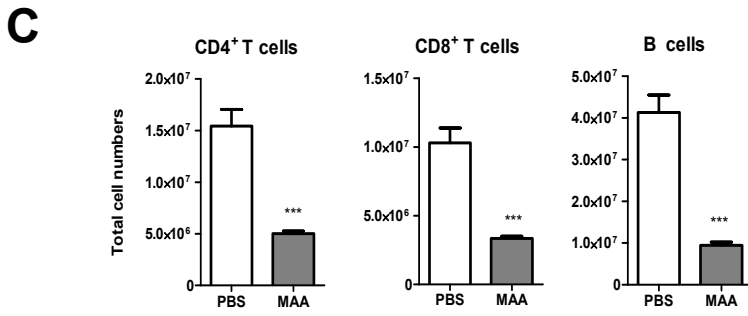
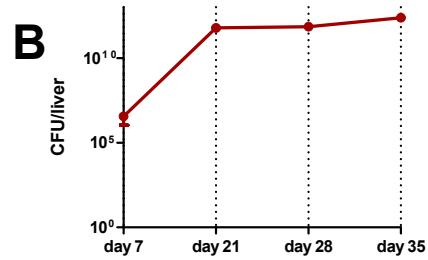
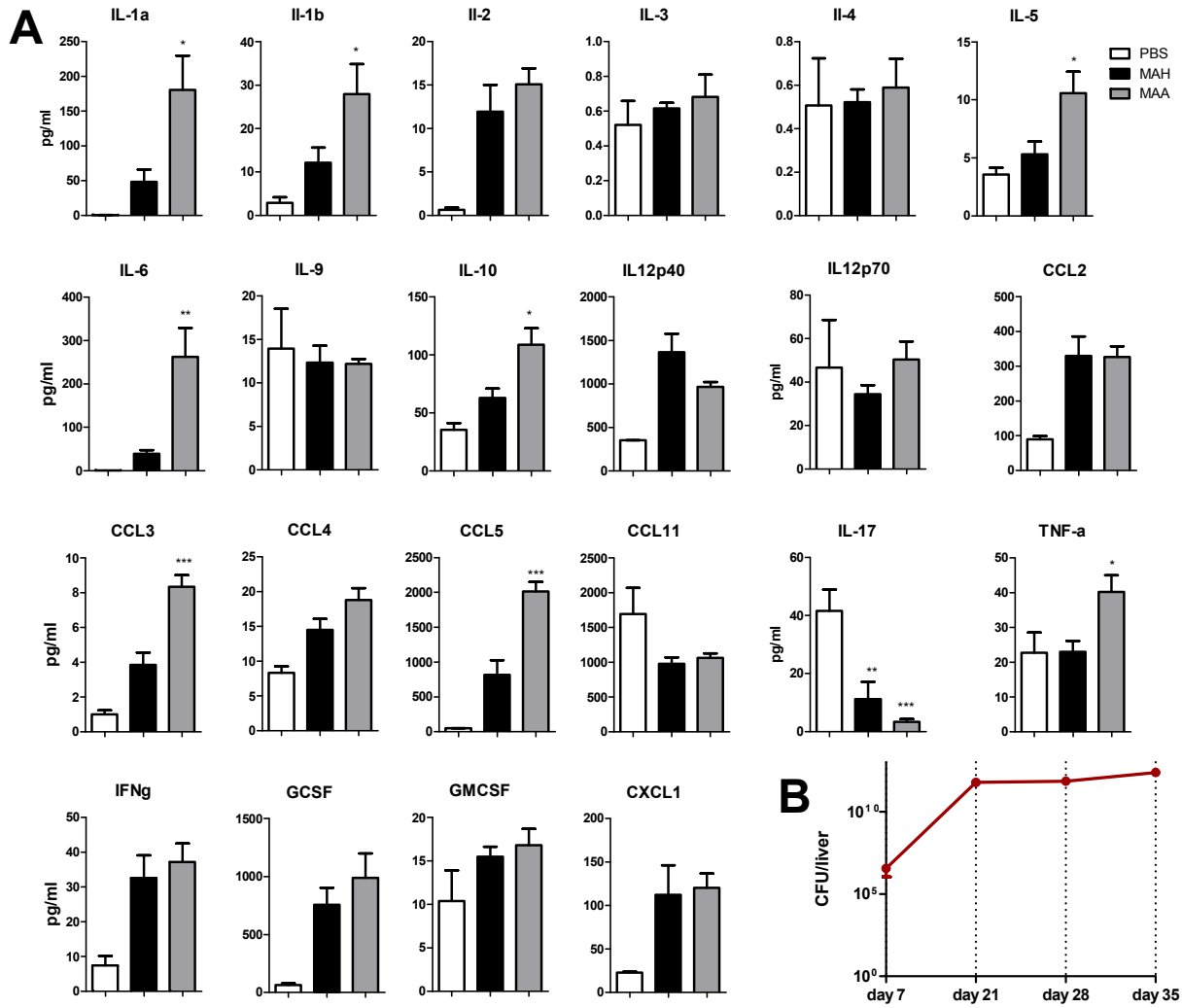
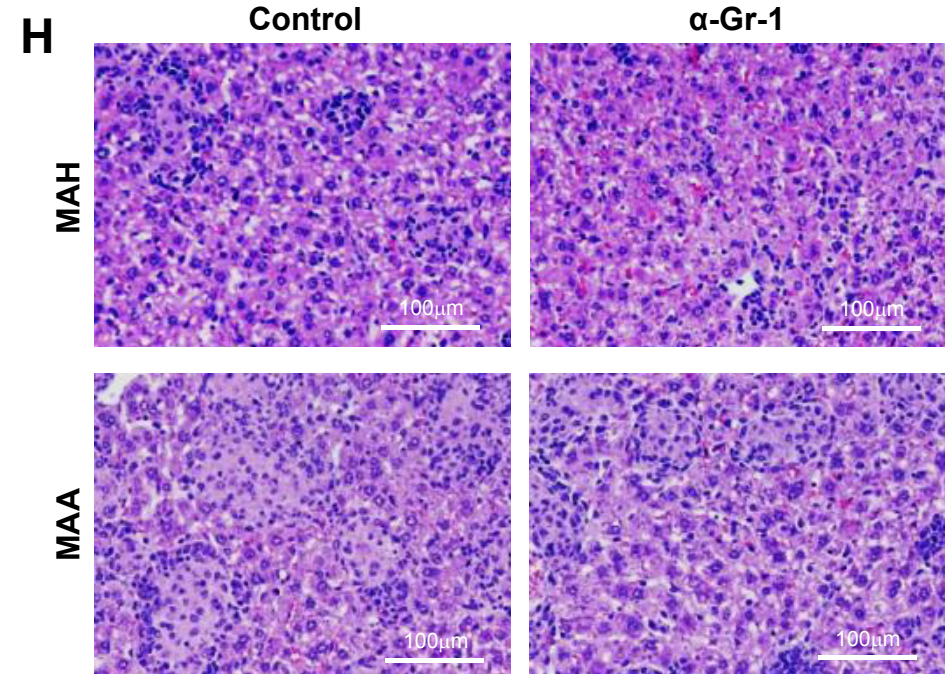
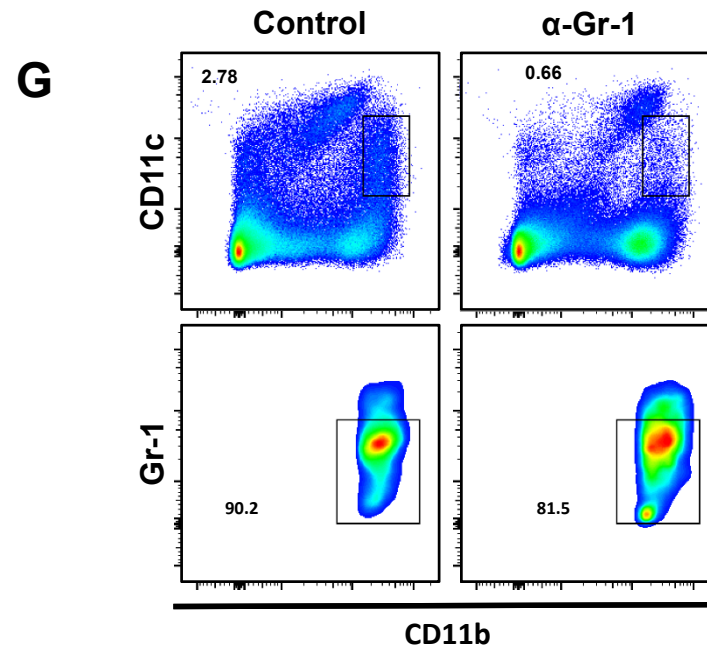
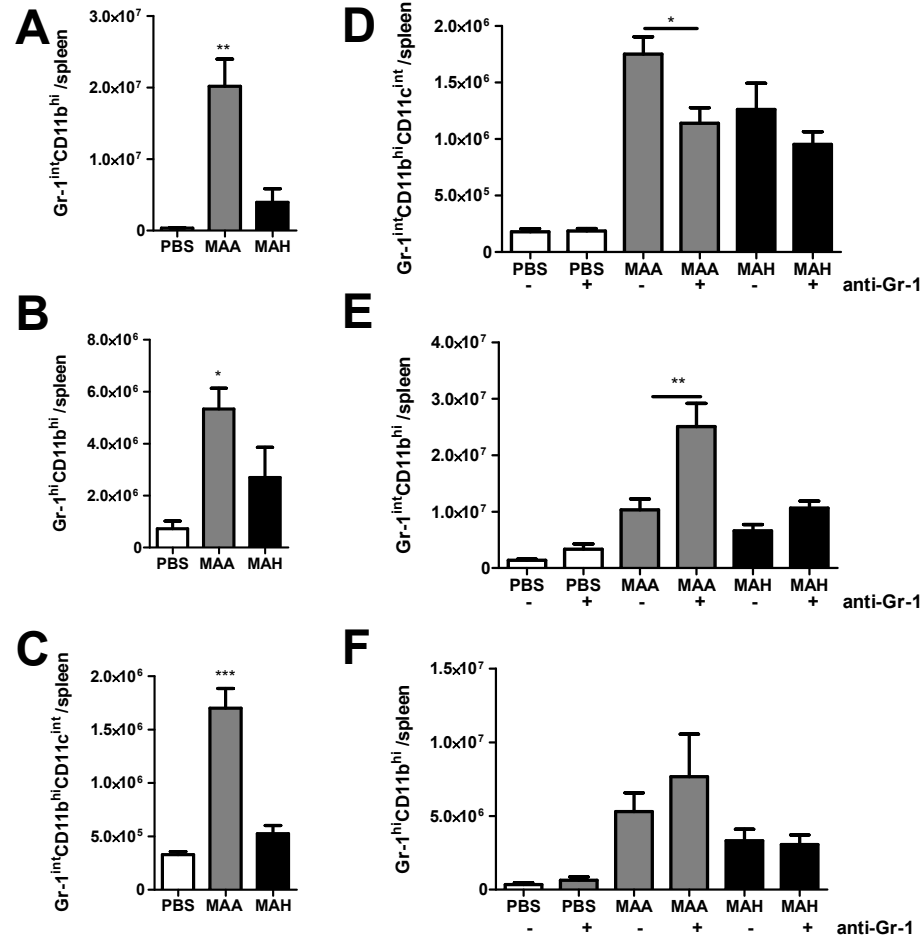
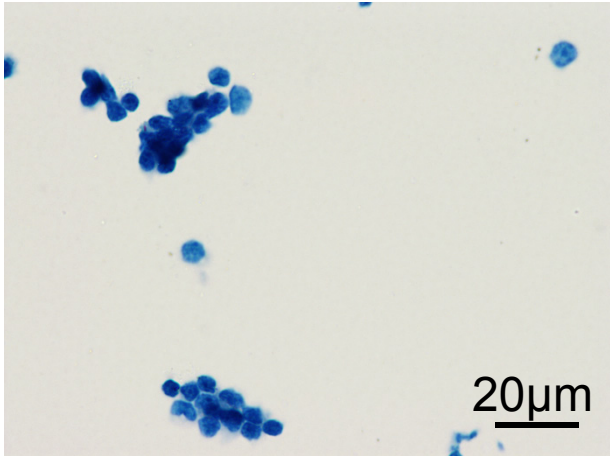


Figure S2 Related to Figure 2

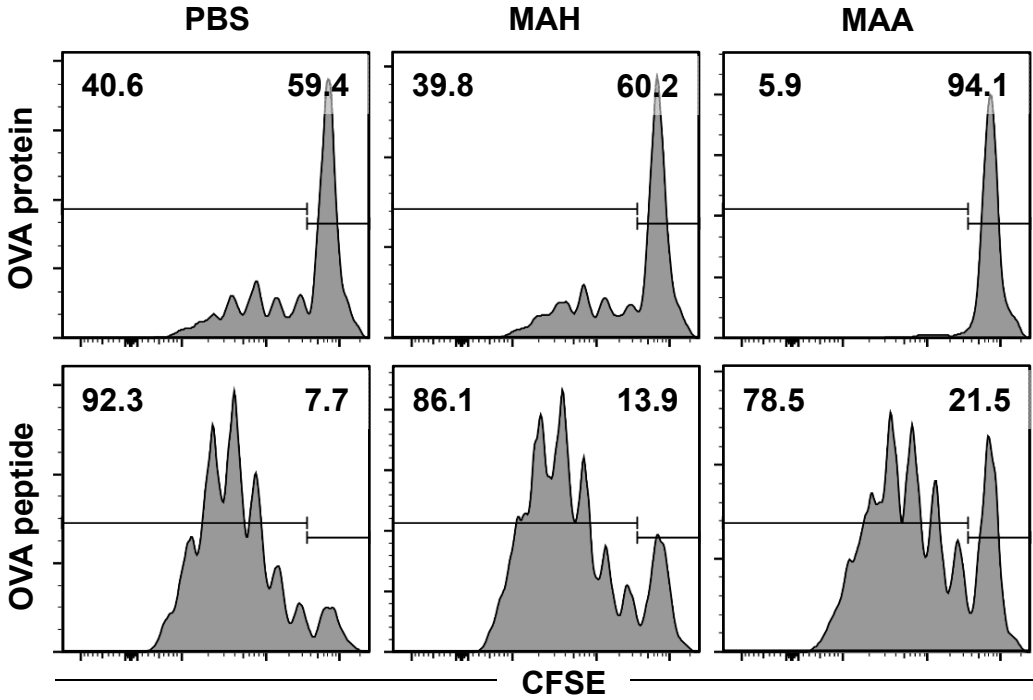


Figures S3. Related to Figure 6.

A



B



C

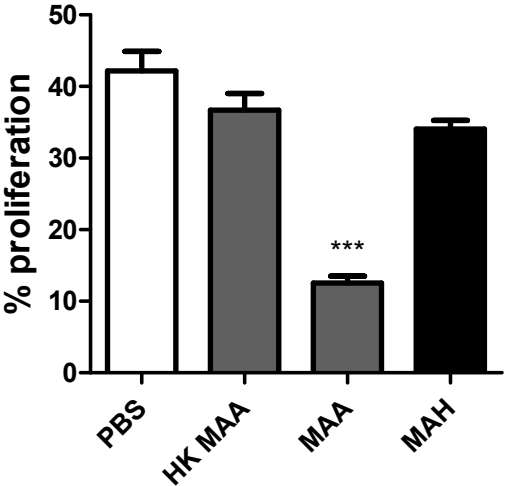


Figure S4. Related to Figure 6.

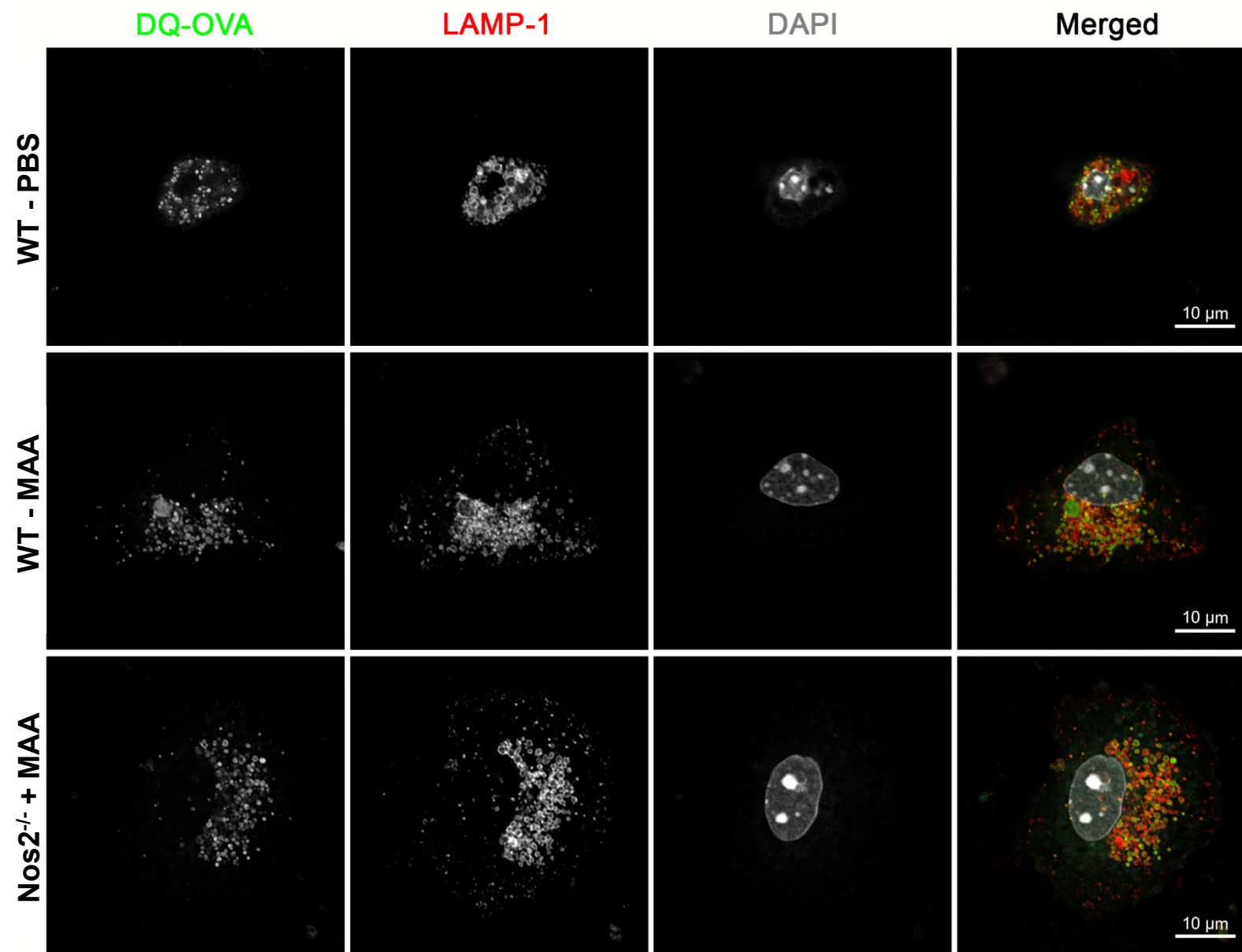


Figure S5

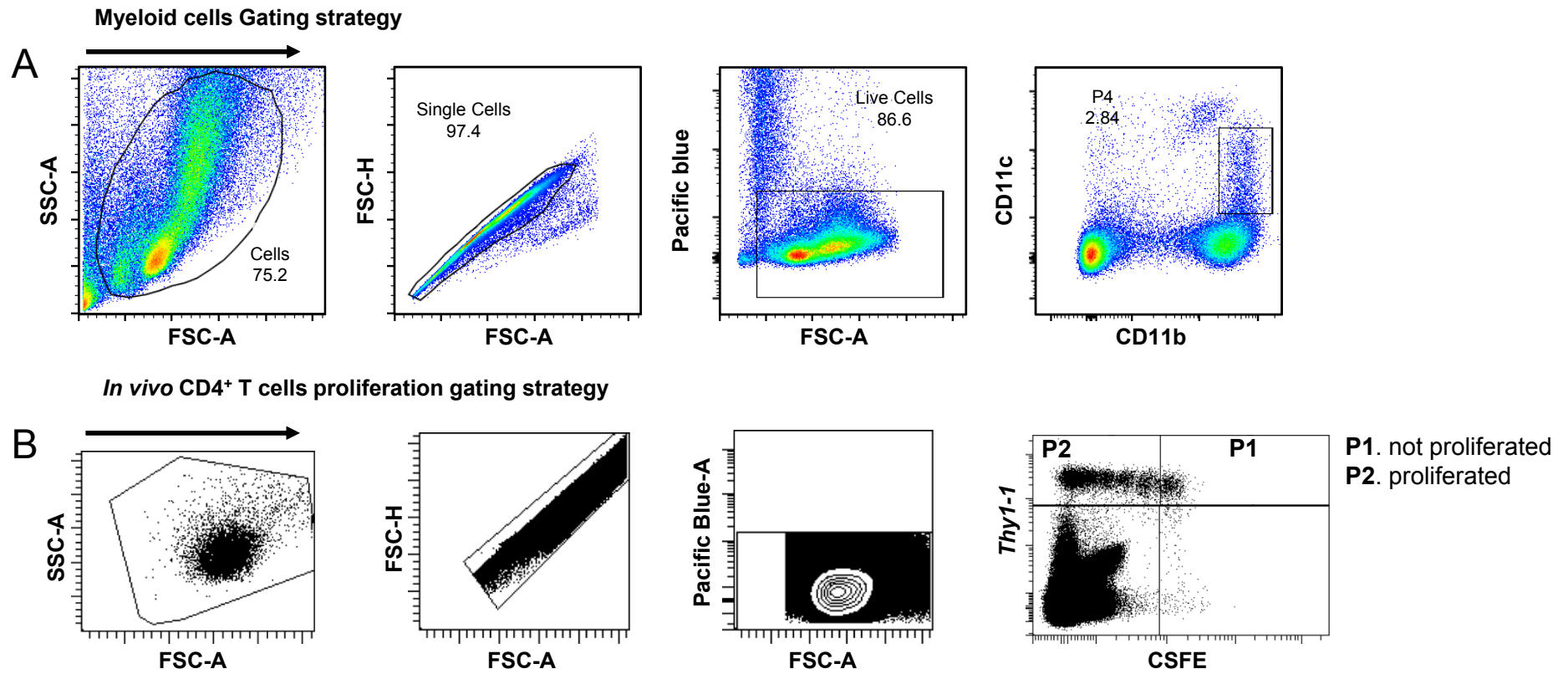


Table S1: List of antibodies for flow cytometry used in this study

Antibody	Antigen	Clone	Company
Anti-CD3	CD3 mouse	17A2	eBioscience
Anti-CD4	CD4 mouse	RMA4.5	eBioscience
Anti-CD8	CD8 mouse	53.6.7	eBioscience
Anti-CD11b	CD11b mouse	M1/70	eBioscience
Anti-CD11c	CD11c mouse	N418	eBioscience
Anti-CD25	CD25 mouse	PC61.5	eBioscience
Anti-CD 45RA	CD45RA mouse	3e-F11	BioLegend
Anti-CD 45RB	CD45RB mouse	16A	eBioscience
Anti-CD90.1(Thy1.1)	CD90.1 mouse	HIS51	eBioscience
Anti-Gr-1	Gr-1 mouse	RB6.8C5	BD pharmingen
Anti-Ly6C	Ly6C mouse	AL-21	BD pharmingen
Anti-Ly6G	Ly6G mouse	1A8-Ly6g	eBioscience
Anti-FCR	FCR mouse	2.4G2	BD Pharmingen
Anti-PDL-1	PDL-1 mouse	MIH5	eBioscience
Anti-CD86	CD86 mouse	GL1	eBioscience
Anti-MHC-II	MHC-II mouse	M5/114.15.2	eBioscience
Anti-CD19	CD19 mouse	1D3	BD pharmingen
Anti-Nos2	Nos2 mouse	CXFNT	eBioscience
Anti-TNF	TNF mouse	MP6-XT22	eBioscience
Anti-LAMP1	Mouse LAMP1	1D4B	Biolegend