

## Supplementary Information

### Table of Contents:

**Supplementary Figure 1.** Online recording pages from the Harlequin Ladybird Survey website ([www.harlequin-survey.org](http://www.harlequin-survey.org)); Page 2.

**Supplementary Figure 2.** Screenshots from the iRecord Ladybirds smartphone application (app) used to record ladybird species, with *Harmonia axyridis* used as an example throughout; Page 4.

# The Harlequin Ladybird Survey



HOME • What is a ladybird? • Recognising the Harlequin ladybird • Fact File • Research • Recording sightings • For young people • Acknowledgements • Contacts • Useful links

## Species Records Form

To submit a harlequin ladybird record, start typing 'harlequin' in the species column and select the name when it pops up. Select the colour form in the next column, if it is an adult, and then the life stage in the third. Enter the number you saw of that colour form or life stage, a comment if you wish and any photos.

You can record other ladybird species seen on the same date in the same place if you wish. Simply type the name in the species column.

About You
What did you see and when?
Where Was It?

This record is being submitted to **iRecord**. If you have an iRecord account, please **log in** so that this sighting appears in your records. If you are not already registered with iRecord we highly recommend it! However, you can continue without registering by providing your details below. We ask for these as we may need to contact you when verifying your sighting. They will not be used for any other purpose.

**First name:**   
Please provide your first name

**Surname:**   
Please provide your surname

**Email:**   
Please provide your email. This will only be used to contact you if we require further information to verify the record.

a.

## Species Records Form

To submit a harlequin ladybird record, start typing 'harlequin' in the species column and select the name when it pops up. Select the colour form in the next column, if it is an adult, and then the life stage in the third. Enter the number you saw of that colour form or life stage, a comment if you wish and any photos.

You can record other ladybird species seen on the same date in the same place if you wish. Simply type the name in the species column.

About You
What did you see and when?
Where Was It?

Please enter the date and all the species you saw at one site on a single day and any other information about them. Then move to the **Where was it?** tab before submitting your records.

**Date:**    
The date you saw this (dd/mm/yyyy)

Species	Colour form	Life stage	Quantity	Comment	Add photos
<i>Harmonia axyridis</i> Harlequin Ladybird	succinea	Adult	2	Mating pair	

Files

photo

Caption:

Use \* as a wildcard when searching for species names.

b.

**Species Records Form**

To submit a harlequin ladybird record, start typing 'harlequin' in the species column and select the name when it pops up. Select the colour form in the next column, if it is an adult, and then the life stage in the third. Enter the number you saw of that colour form or life stage, a comment if you wish and any photos.

You can record other ladybird species seen on the same date in the same place if you wish. Simply type the name in the species column.

About You    What did you see and when?    Where Was It?

Please provide the locality of the record. You can enter the reference directly, or search for a place then click on the map to set it.

**Habitat:**  
 Industrial and urban  
 Buildings of cities, towns and villages

The GeoPlanet place search service is no longer supported

**Spatial Ref:**  
 TL4658    British National Grid

Click on the map for a grid reference. Change the grid reference system if you are in Ireland or the Channel Islands.

**Site Name:**  
 Cambridge

**Overall comment:**

Submit

c.

**Supplementary Figure 1.** Online recording pages from the Harlequin Ladybird Survey website ([www.harlequin-survey.org](http://www.harlequin-survey.org)). **a.** First page, requesting basic information about the recorder; **b.** Second page, requesting information on the date of the sighting and on the species seen (including the opportunity to upload one or more photos for verification purposes); **c.** Third page, requesting information on the habitat and location where the species was found, with space for comments (e.g. ecological or behavioural observations made by the recorder). The location may be selected either by entering a grid reference or by clicking on the interactive map.



a.



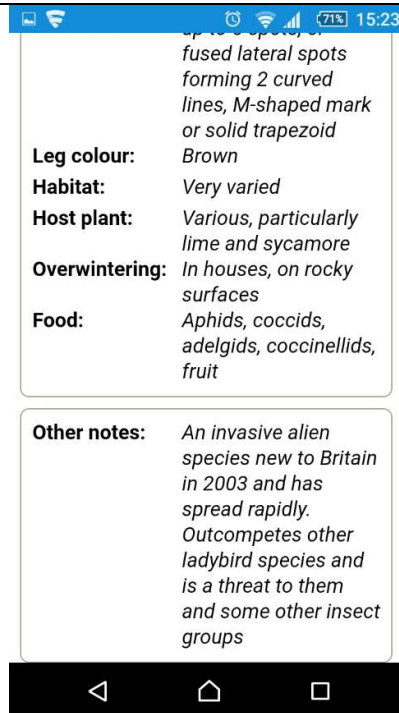
b.



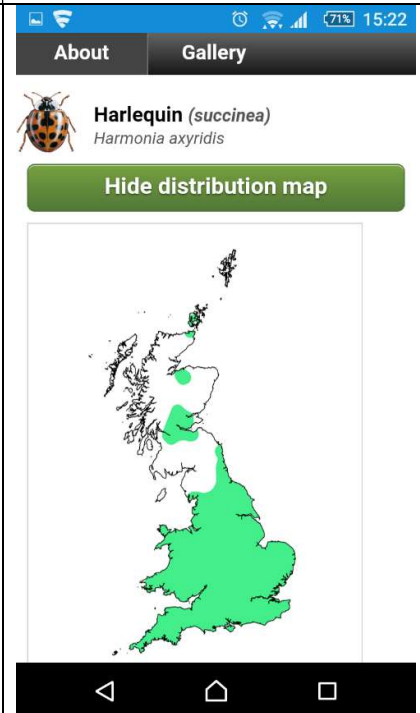
c.



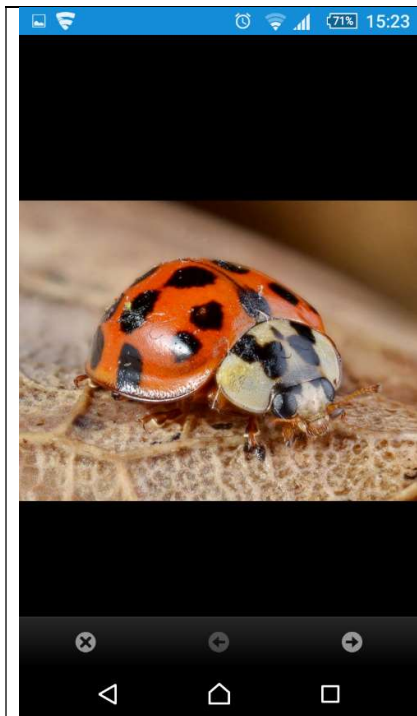
d.



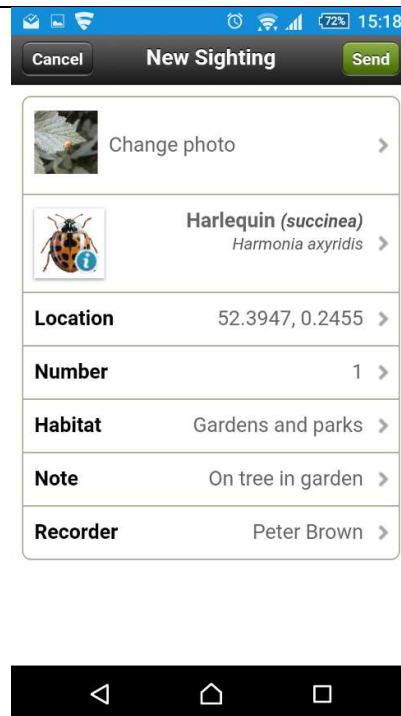
e.



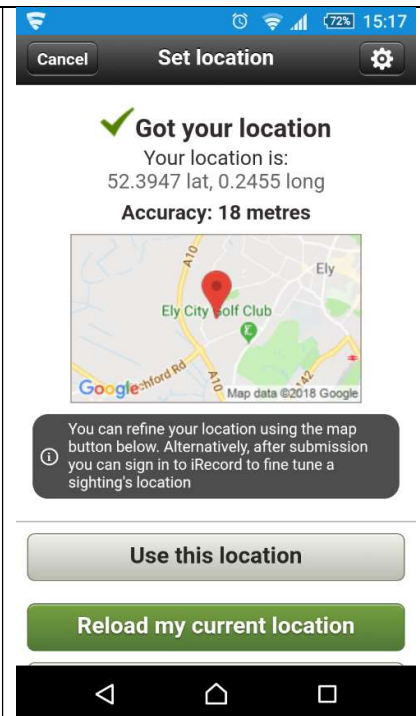
f.



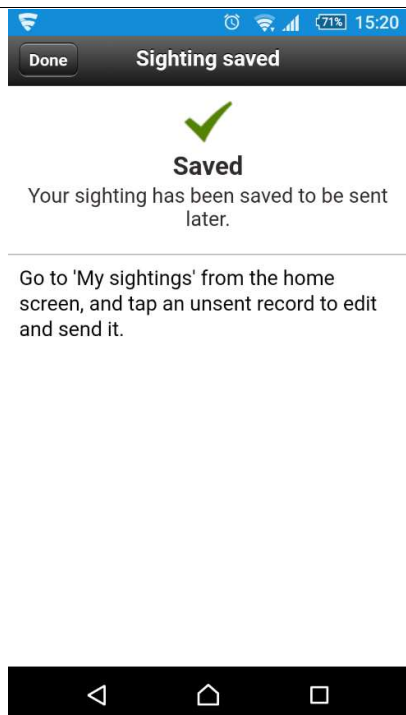
g.



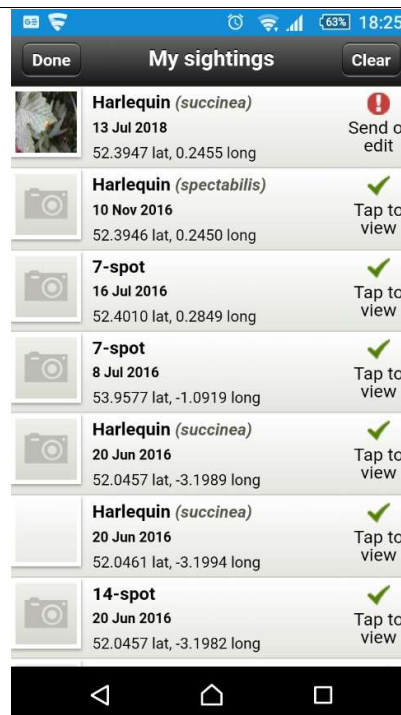
h.



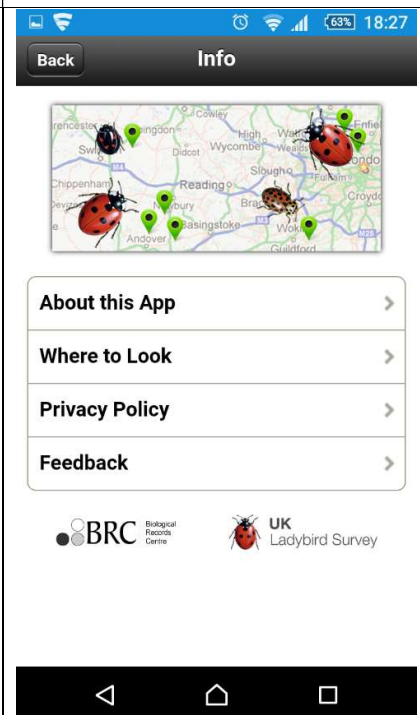
i.



j.



k.



l.

**Supplementary Figure 2.** Screenshots from the iRecord Ladybirds smartphone application (app) used to record ladybird species, with *Harmonia axyridis* used as an example throughout. Records submitted are checked by the UK Ladybird Survey. **a.** Opening screen; **b.** Ladybird guide: first screen, showing a list of species available to record, ordered by likelihood of occurrence; **c.** Ladybird guide: first screen, showing a list of species available to record, filtered by main colour of the ladybird. In this case the red filter was selected; **d.** Ladybird guide: top of second screen, providing identification information for the species selected; **e.** Ladybird guide: bottom of second screen,

providing further identification and ecological information for the species selected; **f.** Ladybird guide: distribution map for Great Britain of species selected; **g.** Ladybird guide: example gallery image of species selected, enabling the recorder to check their own ladybird against the gallery image(s), prior to record submission; **h.** Adding a record: main recording screen once a species has been selected; **i.** Adding a record: location screen showing map generated from GPS smartphone location; **j.** Adding a record: confirmation screen to show that the record has been saved; **k.** 'My sightings': screen showing records submitted (indicated by green tick) and records saved but not yet submitted (indicated by red circle with exclamation mark); **l.** Information: screen provides background information about the app.