

Imaging of *Pseudomonas aeruginosa* infection with Ga-68 labelled pyoverdine for positron emission tomography

Milos Petrik¹, Eva Umlaufova¹, Vladislav Raclavsky², Andrea Palyzova³, Vladimir Havlicek^{3,4}, Hubertus Haas⁵, Zbynek Novy¹, Dalibor Dolezal¹, Marian Hajduch¹ and Clemens Decristoforo⁶

¹Institute of Molecular and Translational Medicine, Faculty of Medicine and Dentistry, Palacky University, Olomouc, Czech Republic

²Department of Microbiology, Faculty of Medicine and Dentistry, Palacky University, Olomouc, Czech Republic

³Institute of Microbiology of the Czech Academy of Sciences, v.v.i., Prague, Czech Republic

⁴Regional Centre of Advanced Technologies and Materials, Department of Analytical Chemistry, Faculty of Science, Palacky University, Olomouc, Czech Republic

⁵Division of Molecular Biology/Biocenter, Medical University Innsbruck, Innsbruck, Austria

⁶Clinical Department of Nuclear Medicine, Medical University Innsbruck, Innsbruck, Austria

Table of contents

Supplementary Figure S1: Quality control of ^{68}Ga -PVD-PAO1 using high performance liquid chromatography (A) and instant thin-layer chromatography on silica gel impregnated glass fiber sheets (B).

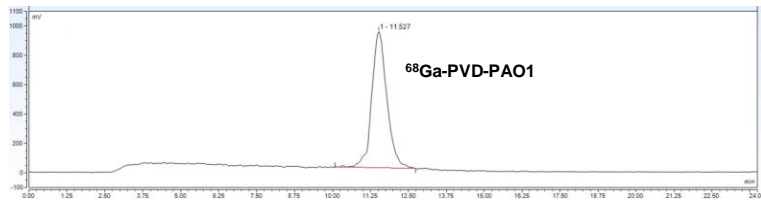
Supplementary Figure S2: (A) Biodistribution of ^{68}Ga -PVD-PAO1 in non-infected Balb/c mice 30 a 90 min after injection. (B) Static PET/CT imaging (3D volume rendered images) of ^{68}Ga -PVD-PAO1 in non-infected Balb/c mice 30 and 90 min after injection.

Supplementary Table S1: *In vitro* characterization of ^{68}Ga -PVD-PAO1. Log P, protein binding (expressed as % of protein bound activity of the total activity used) and stability in human serum, 0.1 M FeCl_3 and 6 mM DTPA.

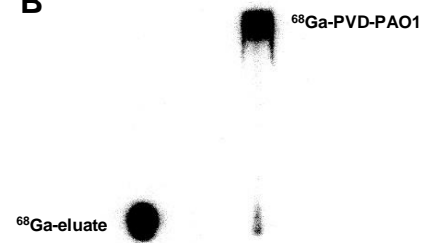
Supplementary Table S2. Microbial strains used in the study.

Supplementary Figure S1: Quality control of ^{68}Ga -PVD-PAO1 using high performance liquid chromatography (A) and instant thin-layer chromatography on silica gel impregnated glass fiber sheets (B).

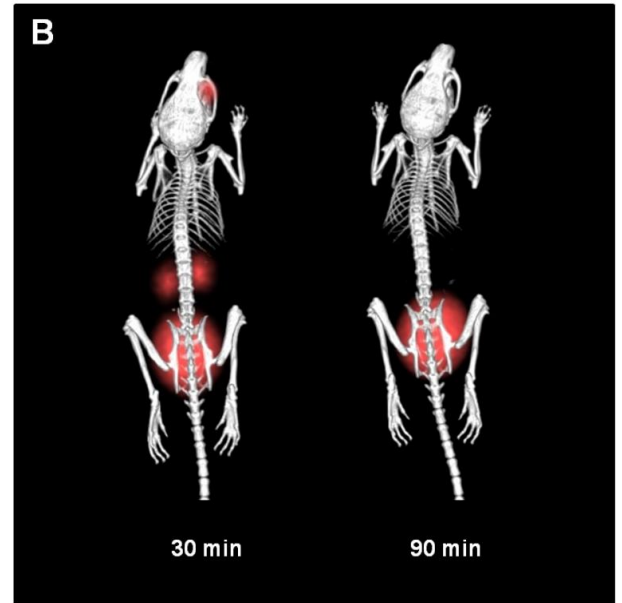
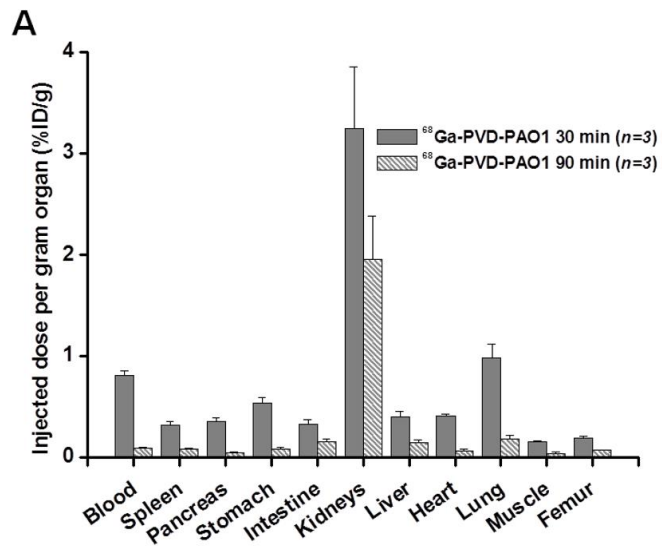
A



B



Supplementary Figure S2: (A) Biodistribution of ^{68}Ga -PVD-PAO1 in non-infected Balb/c mice 30 a 90 min after injection. (B) Static PET/CT imaging (3D volume rendered images) of ^{68}Ga -PVD-PAO1 in non-infected Balb/c mice 30 and 90 min after injection.



Supplementary Table S1: *In vitro* characterization of ⁶⁸Ga-PVD-PAO1. Log P, protein binding (expressed as % of protein bound activity of the total activity used) and stability in human serum, 0.1 M FeCl₃ and 6 mM DTPA.

	Log P	Incubation	Protein	Stability in	Stability in	Stability in
⁶⁸ Ga-siderophore	(n=6)	time (min)	binding	human serum	iron solution	DTPA solution
			(%)	(%)	(%)	(%)
			(n=3)	(n=3)	(n=3)	(n=3)
		30	2.31±0.93	97.9±0.52	0.53±0.32	94.8±2.21
⁶⁸ Ga-PVD-PAO1	-3.07±0.08	60	2.79±1.14	96.6±1.19	0.37±0.21	95.7±0.62
		120	2.46±0.73	95.6±2.34	0.17±0.09	89.7±2.73

Supplementary Table S2. Microbial strains used in the study.

*No refers to the Collection of clinical isolates of the Department of Microbiology, Faculty of Medicine & Dentistry, Palacky University Olomouc.

CF – cystic fibrosis; COPD – chronic obstructive pulmonary disease; CRC – colorectal cancer

Species	Isolate No*	Origin
<i>Acinetobacter baumannii</i>	2377	sputum of a CF patient
<i>Burkholderia cenocepacia</i>	2029	sputum of a CF patient, ST-32 strain
<i>Burkholderia multivorans</i>	1926	bronchial aspirate from an acute respiratory failure patient
<i>Candida albicans</i>	1265	sputum of a CF patient
<i>Escherichia coli</i>	ATCC 10536	ATCC
<i>Escherichia coli</i>	2463	rectal swab from a patient suffering from haemorrhoids
<i>Klebsiella pneumonia</i>	2102	rectal swab from a CRC patient
<i>Listeria monocytogenes</i>	---	QC control strain from national authority
<i>Pseudomonas aeruginosa</i>	ATCC 15692	ATCC
<i>Pseudomonas aeruginosa</i>	1019	sputum of a COPD patient
<i>Pseudomonas grimontii</i>	754	sputum of a COPD patient
<i>Pseudomonas monteilii</i>	2260	rectal swab from a low birth-weight newborn
<i>Staphylococcus aureus</i>	230	sputum of a CF patient
<i>Stenotrophomonas maltophilia</i>	303	sputum of a CF patient
<i>Streptococcus agalactiae</i>	487	sputum of a CF patient
<i>Yersinia enterocolitica</i>	2871	rectal swab from a patient suffering from gallstones