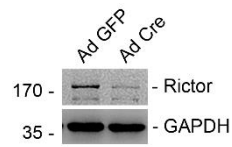
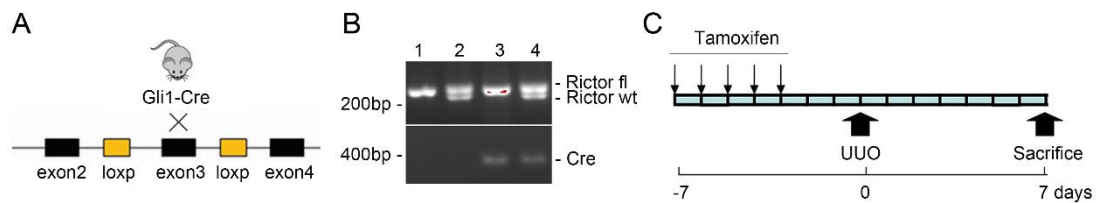


Supplemental Figure 1



Supplemental Figure 1. Primary cultured fibroblasts were generated from kidneys of *Rictor^{fl/fl}* mice. The fibroblasts were infected with Adeno-Cre to induce Rictor gene deletion. Fibroblasts infected with Adeno-GFP were used as control. After 48 hours, cell lysates were collected. Western blotting assay showing the protein abundance for Rictor in fibroblasts.

Supplemental Figure 2



Supplemental Figure 2. (A) Breeding strategy. (B) PCR analysis for genotyping the mice. Lane 1: *Gli1-Cre^{-/-}*, *Rictor^{fl/fl}*; lane 2: *Gli1-Cre^{-/-}*, *Rictor^{fl/wt}*; lane 3: *Gli1-Cre^{+/-}*, *Rictor^{fl/fl}*; lane 4: *Gli1-Cre^{+/-}*, *Rictor^{fl/wt}*. (C) Diagram showing the strategy for inducing fibroblast Rictor gene deletion in *Gli1-Cre^{+/-}*, *Rictor^{fl/fl}* mice.