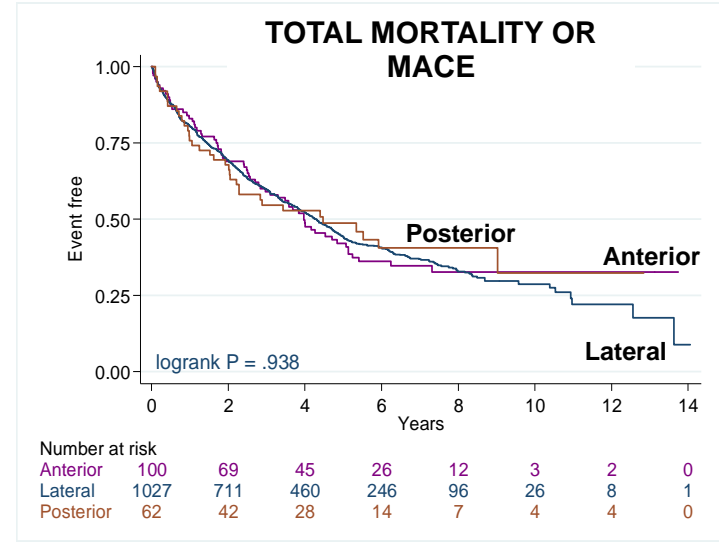
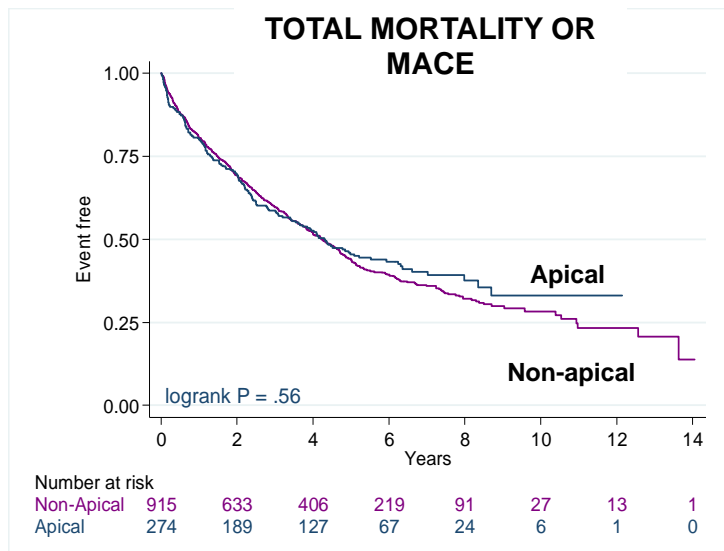
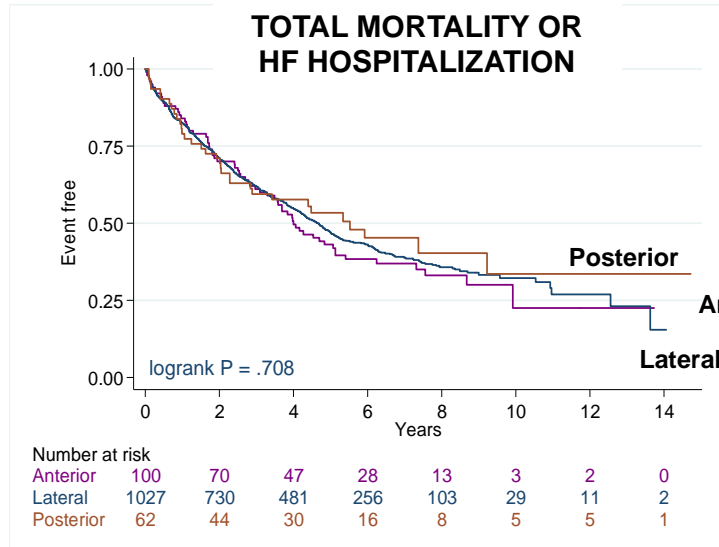
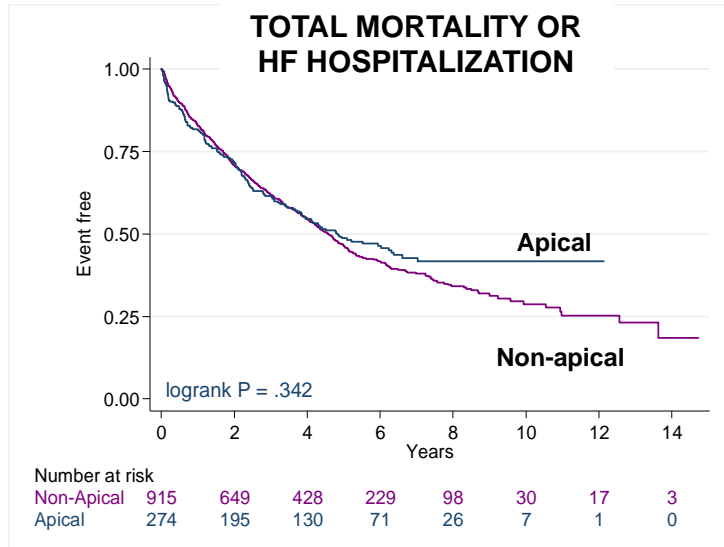


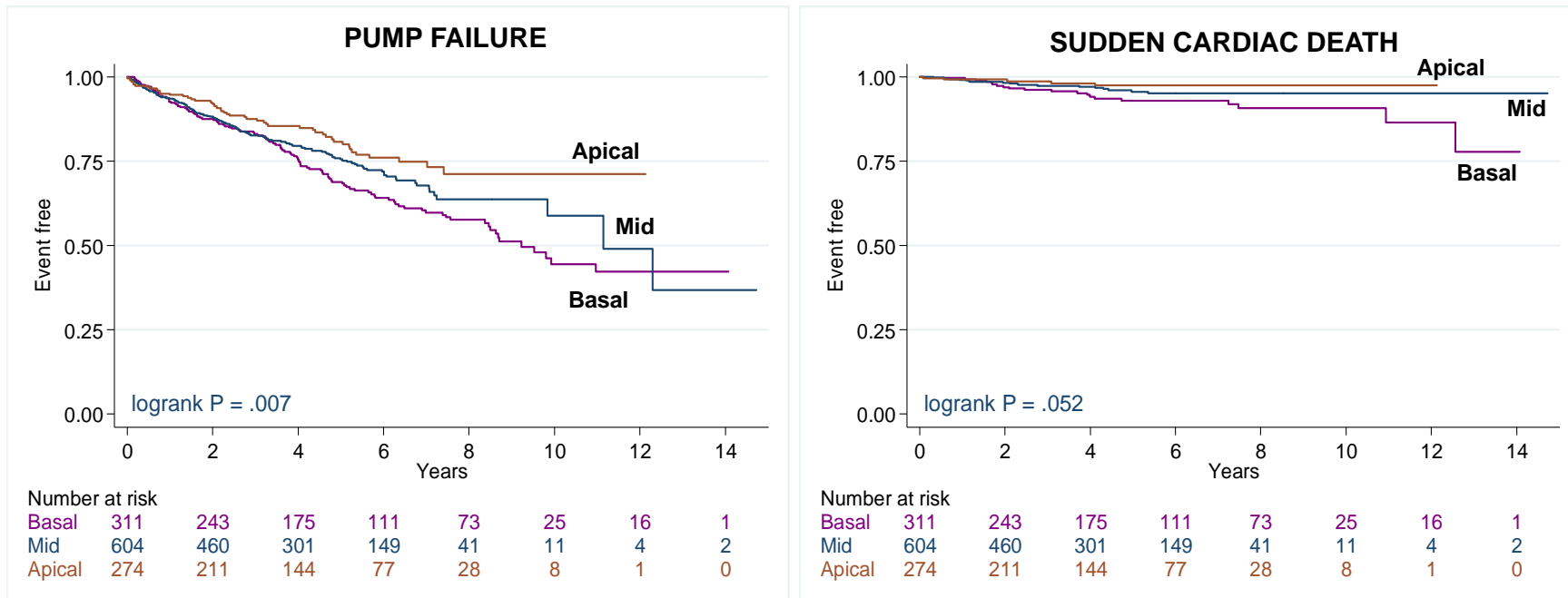
SUPPLEMENTAL MATERIAL

Figure S1. Clinical outcomes after cardiac resynchronization therapy according to lead position.



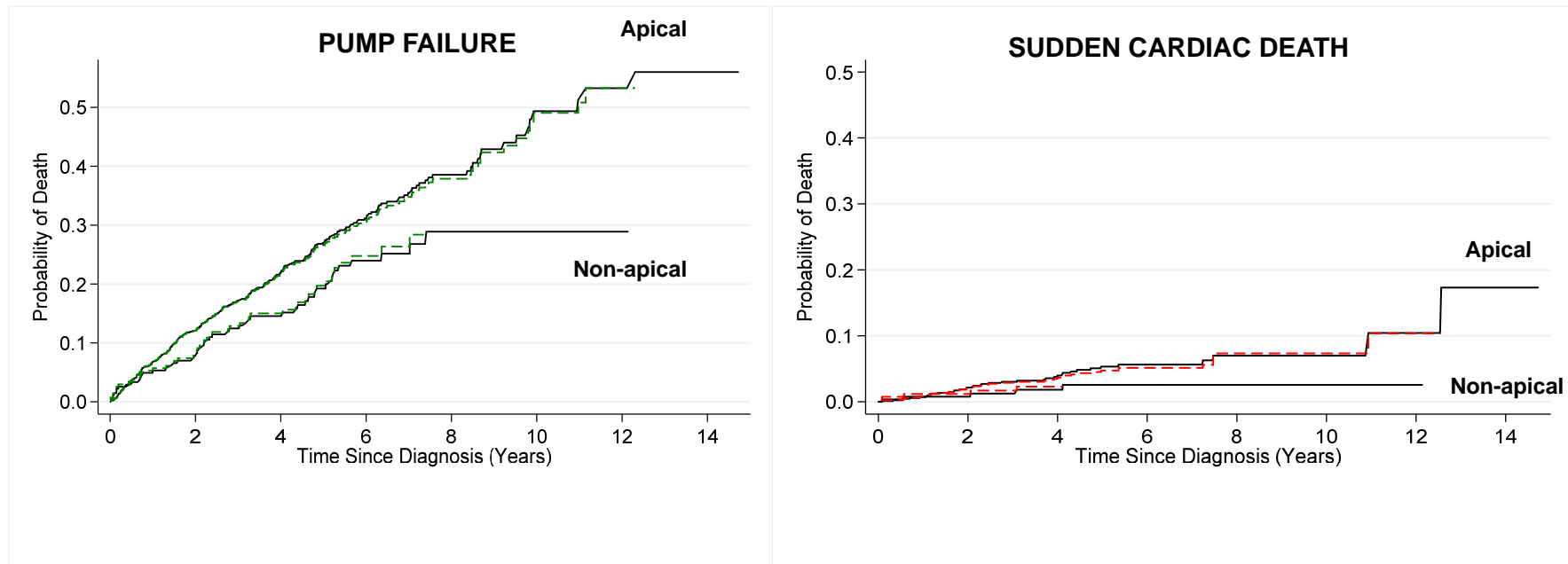
Kaplan-Meier survival curves for clinical outcomes after CRT. MACE = major adverse cardiac events.

Figure S2. Mode of death according to left ventricular lead position.



Kaplan-Meier survival curves for clinical outcomes after CRT according to longitudinal lead position.

Figure S3. Mode of death according to left ventricular lead position: competing risks.



Kaplan-Meier survival curves for clinical outcomes after CRT using competing risk analysis. Mid and basal LV lead positions were grouped together. Solid lines refer to Kaplan-Meier survival estimates for the clinical endpoint. Dashed lines refer to Kaplan-Meier survival estimates using competing risks.