

Supplemental Material

carotid bruits, history of chronic obstructive pulmonary disease, body mass index, congestive heart failure severity class [≤ 2 weeks pre-cath], history of smoking, ventricular gallop, history of renal disease, baseline estimated glomerular filtration rate [Chronic Kidney Disease Epidemiology Collaboration], any valvular heart disease, hypertension, systolic blood pressure, year of index cath, history of liver disease, number of diseased vessels, left main stenosis $\geq 50\%$, acute coronary syndrome status, baseline use of aspirin, angiotensin-converting enzyme inhibitor/angiotensin receptor blocker, or statin therapy).

Table S2. Association between Gout at Baseline OR during Follow-up and Cause-specific Mortality.

Endpoint	Unadjusted HR (95% CI)	Unadjusted p-value	Adjusted* HR (95% CI)	Adjusted* p-value
Fatal MI	1.46 (1.01,2.10)	0.042	0.93 (0.631,1.38)	0.726
Sudden cardiac death	1.45 (1.09,1.95)	0.012	1.10 (0.81,1.50)	0.547
Heart failure death	3.86 (2.69,5.54)	<.001	2.42 (1.64,3.57)	<.001
Cardiac procedure death	1.37 (0.81,2.30)	0.240	1.07 (0.62,1.84)	0.810
Other cardiac death	1.86 (1.66,2.08)	<.001	1.25 (1.11,1.41)	<.001
Non-cardiac death	1.53 (1.40,1.67)	<.001	1.21 (1.10,1.33)	<.001
Unknown cause of death	1.514 (1.174,1.954)	0.001	1.03 (0.77,1.36)	0.865

CV indicates cardiovascular; MI, myocardial infarction

*Adjusted for age, sex, race, prior medical history (including prior MI, coronary artery bypass grafting, congestive heart failure, congestive heart failure severity class, cerebrovascular disease, peripheral vascular disease, diabetes, carotid bruits, history of chronic obstructive pulmonary disease, body mass index, congestive heart failure severity class [≤ 2 weeks pre-cath], history of smoking, ventricular gallop, history of renal disease, baseline estimated glomerular filtration rate [Chronic Kidney Disease Epidemiology

Collaboration], any valvular heart disease, hypertension, systolic blood pressure, year of index cath, history of liver disease, number of diseased vessels, left main stenosis $\geq 50\%$, acute coronary syndrome status, baseline use of aspirin, angiotensin-converting enzyme inhibitor/angiotensin receptor blocker, or statin therapy).

Figure S1. Cumulative Incidence Curves for CV death by Baseline Gout Status.

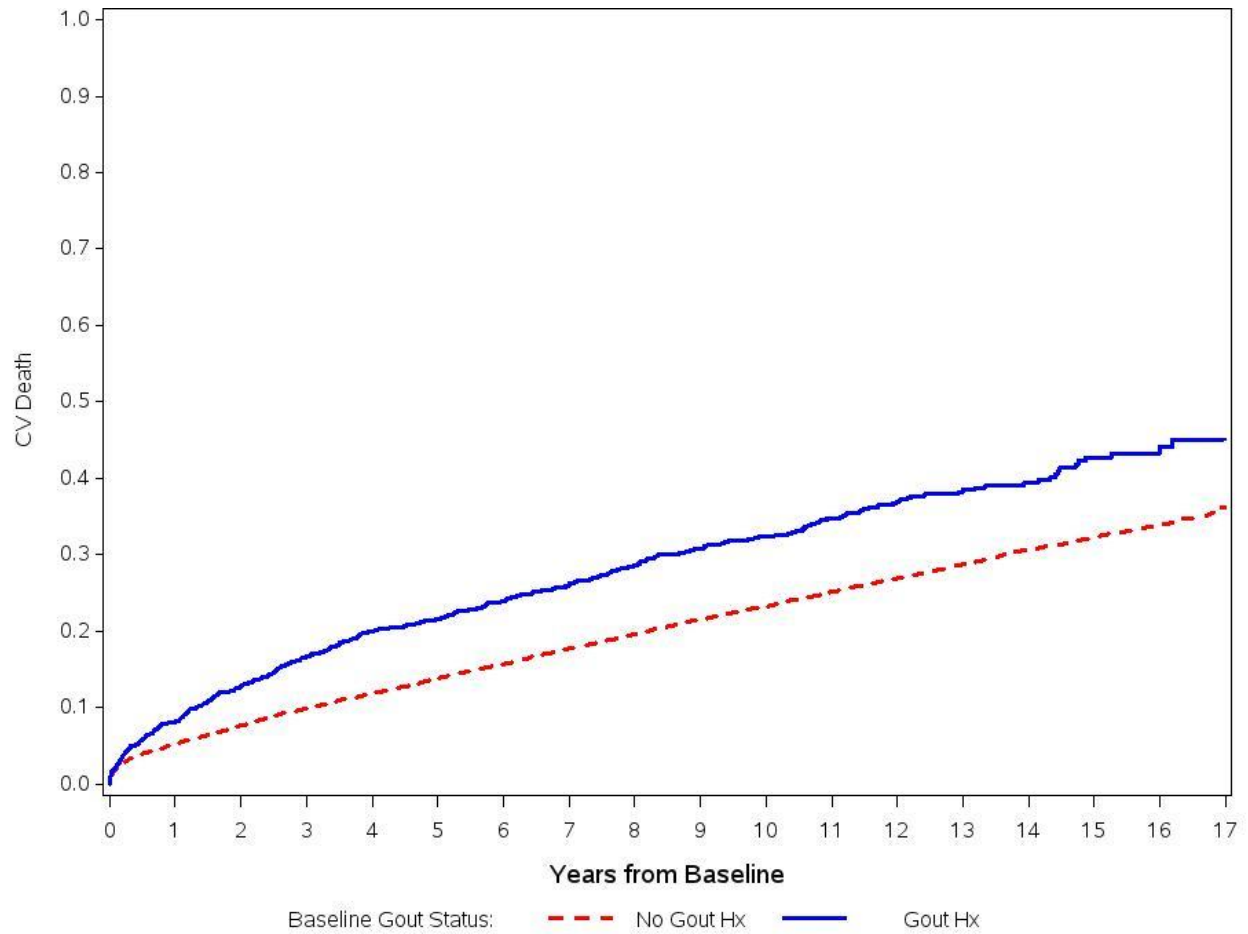


Figure S2. Cumulative Incidence Curves for All-cause Mortality by Baseline Gout Status.

