

Supplementary materials

The gut microbiota in infants of obese mothers increases inflammation and susceptibility to NAFLD

Soderborg et al.

Supplementary Table 1. Select maternal dietary macro- and micronutrients two-weeks postpartum

	Normal-weight	Obese	<i>P</i> value*
Energy (kcal)	2316.99 ± 267.02	2580.08 ± 187.65	0.451
Total fat (g)	91.29 ± 8.84	104.85 ± 12.05	0.399
Total carbohydrate (g)	286.50 ± 42.72	307.91 ± 18.48	0.662
Total protein (g)	93.58 ± 11.07	107.16 ± 9.31	0.384
Total dietary fiber (g)	23.24 ± 3.77	19.39 ± 1.87	0.408
Choline (mg)	351.66 ± 50.13	368.49 ± 51.29	0.822

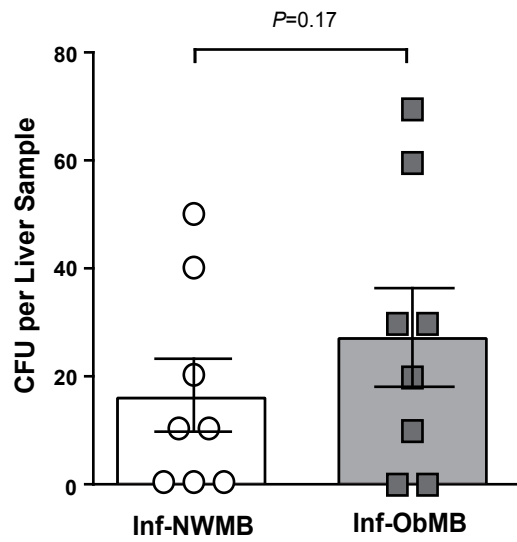
Results are expressed as mean ± SEM.

**P* value assessed by Student's *t*-test.

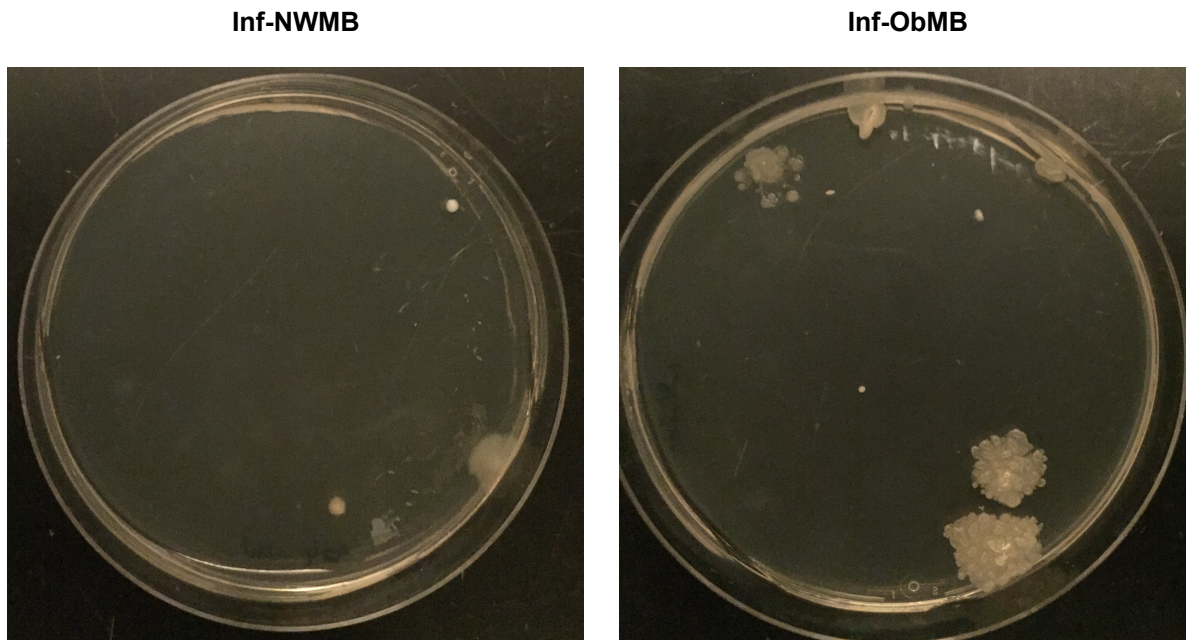
Supplementary Table 2. Forward and reverse sequences of primers used for qPCR

Gene Symbol	Forward Primer	Reverse Primer
<i>18S</i>	TCCGATAACGAACGAGAC	CTAAGGGCATCACAGACC
<i>Abcb11</i>	GACTTTCCACAGTGGCGTCT	TCACTCAACAACCCTACAGATG
<i>Cpt1a</i>	GTCCCTCCAGCTGGCTTATC	CATGCGGCCAGTGGTGTCTA
<i>Cyp7a1</i>	TGATCCTCTGGGCATCTCAAGCAA	AGCTCTTGGCCAGCACTCTGTAAT
<i>Cyp8b1</i>	TTGCAAATGCTGCCTCAACC	TAACAGTCGCACACATGGCT
<i>Gapdh</i>	GTGAAGGTCGGTGTGAACGGATTT	TGGCAACAATCTCCACTTTGCCAC
<i>Hnf4a</i>	GGATATGGCCGACTACAGCG	AGATGGGGACGTGTCATTGC
<i>Ifnb1</i>	AACTCCACCAGCAGACAGTG	GGTACCTTTGCACCCTCCAG
<i>Il10</i>	GCTCTTGCACTACCAAAGCC	CTGCTGATCCTCATGCCAGT
<i>Il1b</i>	GCCTTGGGCCTCAAAGGAAAGAAT	ATTGCTTGGGATCCACACTCTCCA
<i>Il6</i>	TCCATCCAGTTGCCTTCTTG	TTTCTCATTTCACGATTTCCC
<i>Nr0b2</i>	TCCTCTTCAACCCAGATGTGC	AGACTTCACACAGTGCCCAG
<i>Nr1h4</i>	TGGCTGAATGTATGTATACAGGTTT	CAGCGTGCTGCTTCACATTT
<i>Ocln</i>	TTGAACTGTGGATTGGCAGC	CAAGATAAGCGAACCTTGGCG
<i>Ppara</i>	TGCCCTGAACATCGAGTGTGCAAT	TCGTACACCAGCTTCAGCCGAATA
<i>Pparg2</i>	TTCGCTGATGCACTGCCTAT	GGAATGCGAGTGGTCTTCCA
<i>Slc10a1</i>	GTCCTCAAGGCAGGCATGAT	ATCAGGGAGGAGGTAGCCAG
<i>Tjp1</i>	GATGTTTATGCGGACGGTGG	CATTGCTGTGCTCTTAGCGG
<i>Tnf</i>	TAGCCCACGTCGTAGCAAAC	ACAAGGTACAACCCATCGGC
<i>Xbp1s</i>	CTGAGTCCGCAGCAGGTG	GGCAACAGTGTGAGAGTCCA

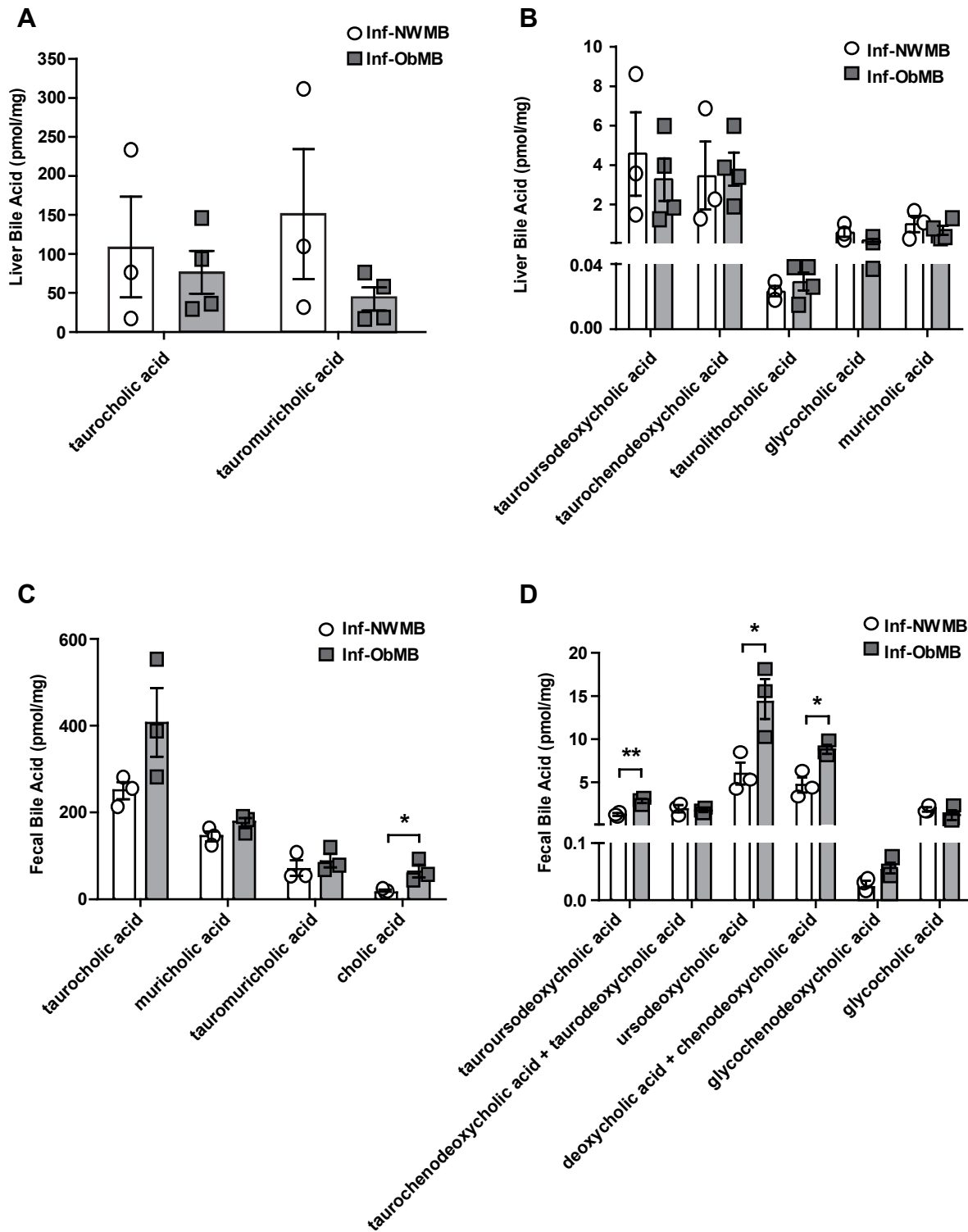
A



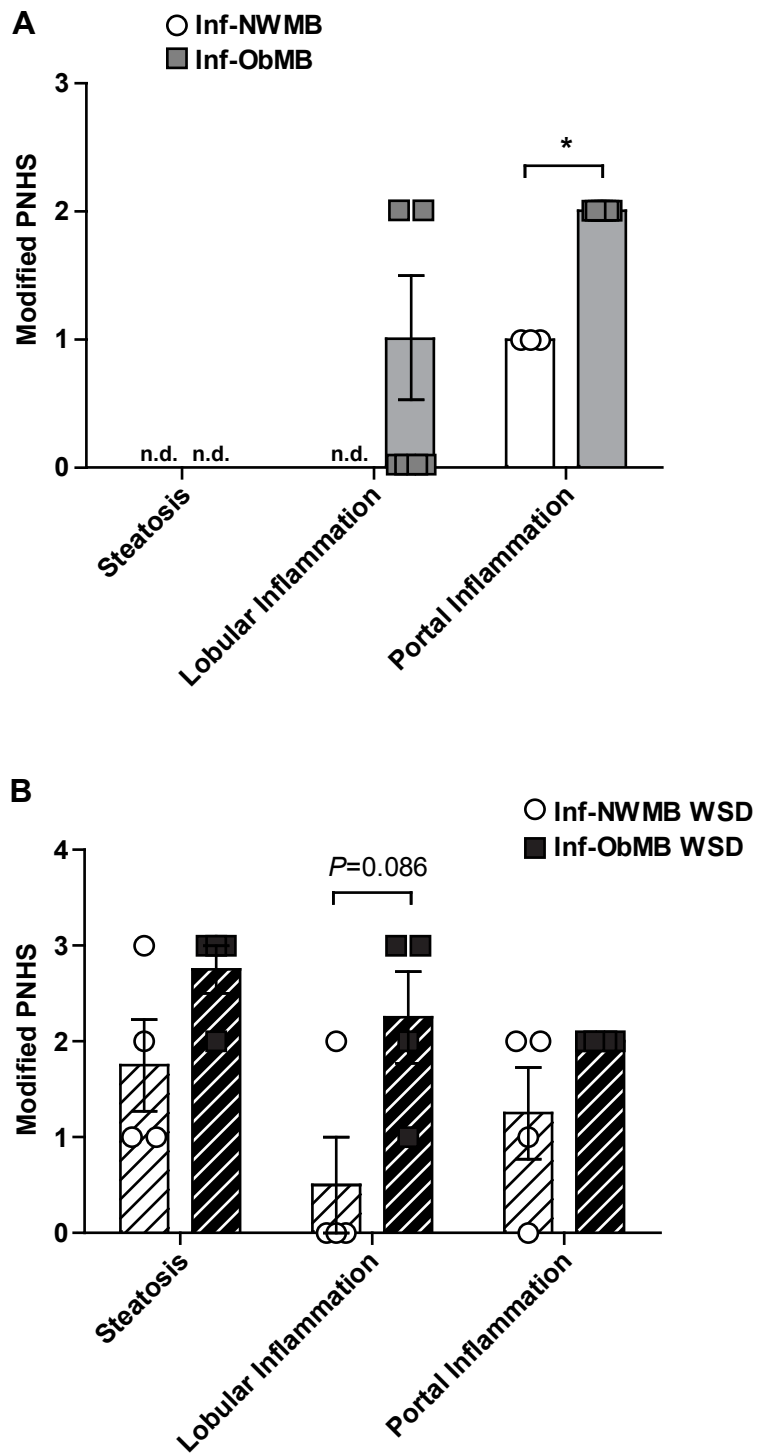
B



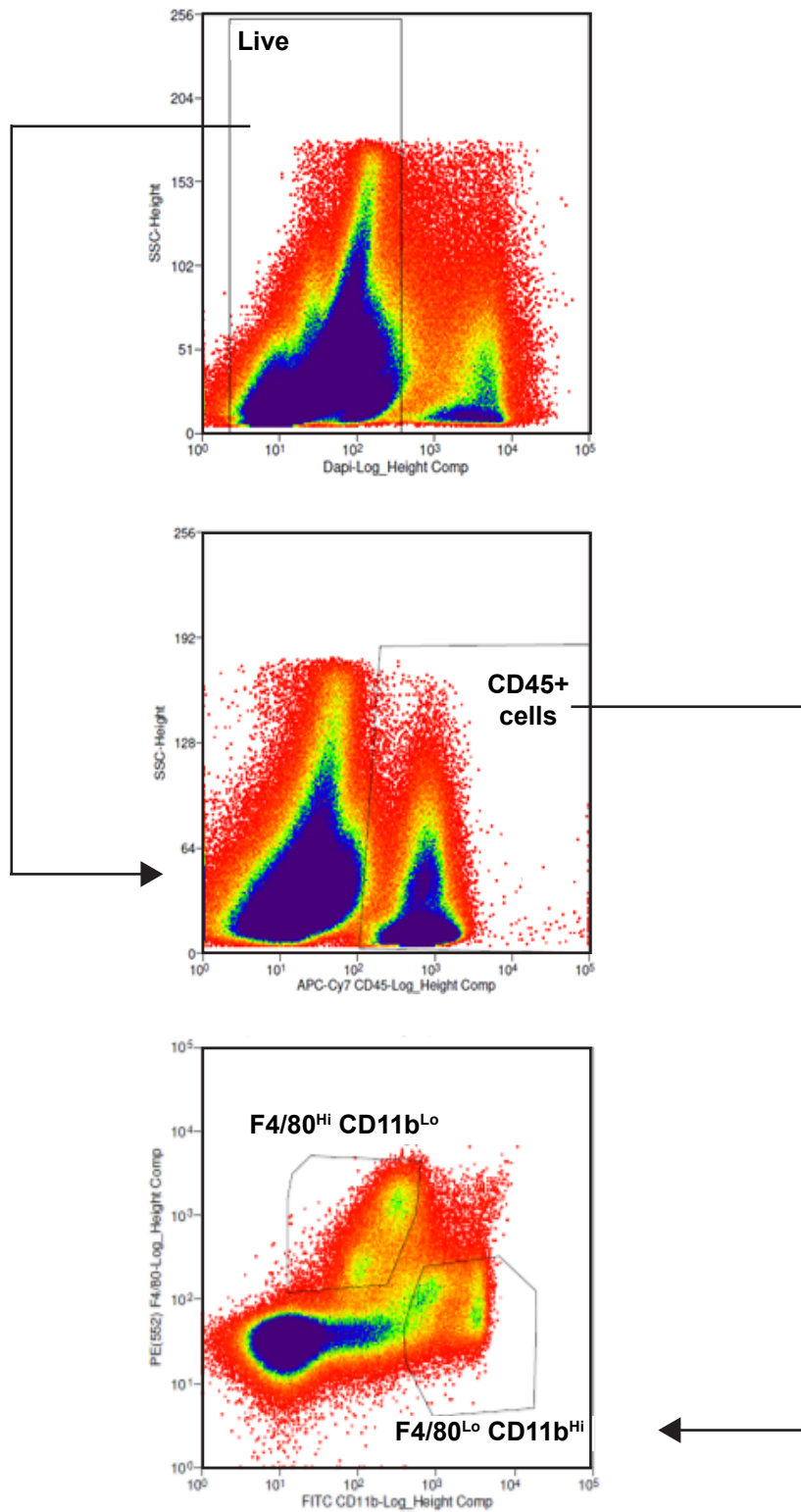
Supplementary Figure 1. Increased bacterial outgrowth from livers of Inf-ObMB mice. A) Number of colony forming units (CFU) from liver homogenate on tryptic soy broth agar plates; $n = 8$ for both Inf-NWMB and Inf-ObMB. Data are presented as mean \pm SEM. B) Fresh livers from Inf-NWMB and Inf-ObMB mice plated on tryptic soy broth agar plates and grown overnight at 37°C.



Supplementary Figure 2. Individual BA measurements in liver (A, B) and feces (C, D) in Inf-NWMB and Inf-ObMB mice. $n = 3$ for Inf-NWMB, $n = 4$ for Inf-ObMB for liver; $n = 3$ per group for feces. Data are presented as mean \pm SEM. * $P < 0.05$ and ** $P < 0.01$ by Student's t -test.



Supplementary Figure 3. Individual scores of the modified Pediatric NAFLD Histological Score (PNHS) for A) Inf-NWMB and Inf-ObMB mice and B) Inf-NWMB WSD and Inf-ObMB WSD mice. n = 3 for Inf-NWMB, n = 7 for Inf-ObMB, n = 4 for Inf-NWMB WSD and Inf-ObMB WSD. Data are presented as mean ± SEM. *P < 0.05 by two-tailed Mann-Whitney U test.



Supplementary Figure 4. Gating strategy for identifying resident and recruited liver macrophages.