

## **Supplemental Data**

### **Isoprenoids increase bovine endometrial stromal cell tolerance to the cholesterol-dependent cytolyisin from *Trueperella pyogenes***

Sholeem Griffin<sup>1</sup> Gareth D. Healey<sup>1</sup>, I. Martin Sheldon<sup>1</sup>

<sup>1</sup> Swansea University Medical School, Swansea University, Swansea, United Kingdom

**Supplemental Table S1.** siRNA sequence for target gene knockdown.

**Supplemental Table S2.** Sequence of reference gene and target gene primers.

**Supplemental Table S3.** Details of the antibodies used in the study for Western blotting.

**Supplemental Figure S1.** Western blot for ABCA1.

**Supplemental Table S1.** siRNA sequence for target gene knockdown.

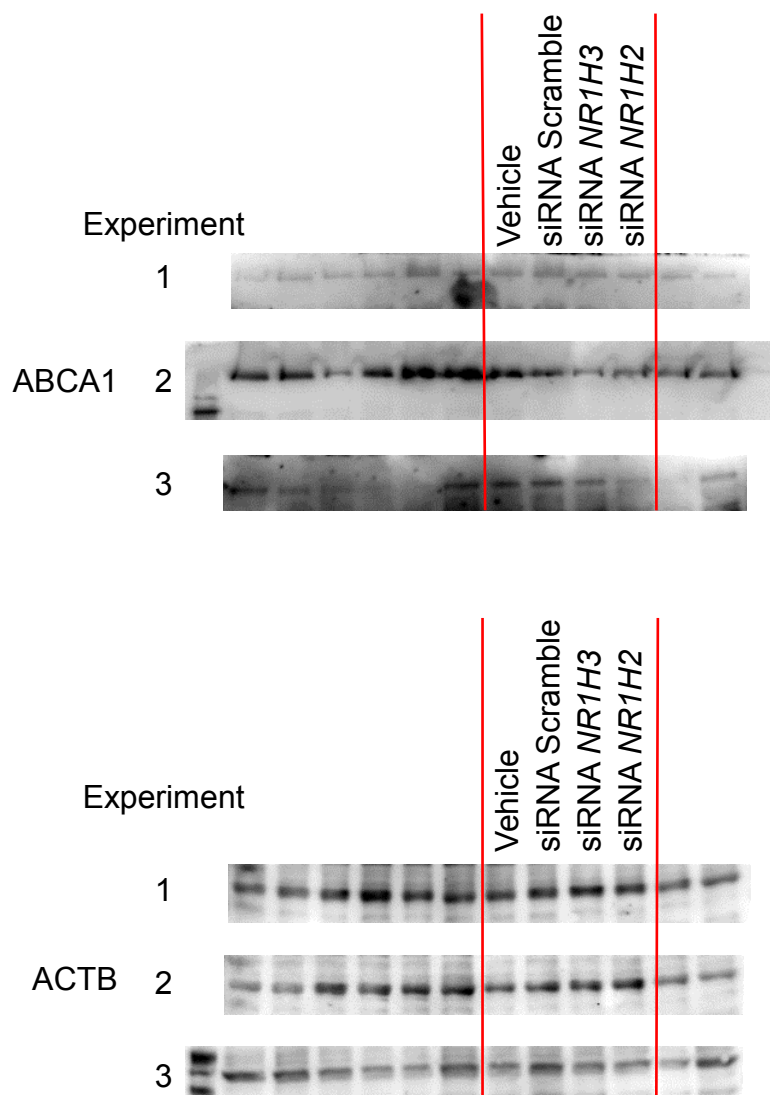
<b>Gene</b>	<b>Direction</b>	<b>Sequence (5'→ 3')</b>
<i>FDPS</i>	Sense	GCACAGACAUCCAGGACAAUU
	Antisense	UUGUCCUGGAUGUCUGUGCUU
<i>GGPS1</i>	Sense	UGACAGAAAUGUUGCAUAAUU
	Antisense	UUAUGCAACAUUUCUGUCAUU
<i>NR1H2</i>	Sense	AGGUGAAGGUGUCCAGUUAUU
	Antisense	UAACUGGACACCUUCACCU
<i>NR1H3</i>	Sense	GCUAAAUGAUGCUGAGUUUUU
	Antisense	AAACUCAGCAUCAUUUAGC

**Supplemental Table S2.** Sequence of reference gene and target gene primers.

<b>Gene</b>	<b>Direction</b>	<b>Sequence (5' → 3')</b>
<i>ACTB</i>	Forward	CAGAAGGACTCGTACGTGGG
	Reverse	TTGGCCTTGGGGTTCAGGG
<i>RLP19</i>	Forward	TGTTTTTCCGGCATCGAGCCCG
	Reverse	ATGCCAACTCCCGCCAGCAGAT
<i>FDPS</i>	Forward	ATGACGGGTAAGATCGGCAC
	Reverse	TTCTGCCCATAGTTCTCCTGC
<i>GGPS1</i>	Forward	TATGACCCCTGCCTTCCTGA
	Reverse	TGGTTCTCACTTGTTTACCTGG
<i>FDFT1</i>	Forward	GGCACCCCTGAGGAGTTCTAC
	Reverse	GCATACTGCATGGCGCATTT
<i>NR1H2</i>	Forward	TCTTCACCTGGGGGAAAGGA
	Reverse	CTAGGATGACCACAACGGAGG
<i>NR1H3</i>	Forward	GGAGGTACAACCCTGGGAGT
	Reverse	AGCAATGAGCAAGGCAAACCT

**Supplemental Table S3.** Details of the antibodies used in the study for Western blotting.

<b>Protein target</b>	<b>Antigen sequence</b>	<b>Name of antibody</b>	<b>Manufacturer, catalog #, and RRID</b>	<b>Species raised in</b>	<b>Dilution used</b>
<b>ABCA1</b>	Recombinant fragment corresponding to Human ABCA1 aa 1800-2260 in UniProtKB O95477 (ABCA1_HUMAN)	Mouse Anti-ABCA1 Monoclonal Antibody, Unconjugated, Clone AB.H10	Abcam, Cambridge, UK Abcam Cat# ab18180, RRID:AB_444302	Mouse monoclonal IgG1 Clone: mAbcam AB.H10	1:500
<b>ACTB</b>	Synthetic peptide conjugated to KLH derived from within residues 1-100 of human beta Actin	Anti-beta Actin [mAbcam 8226] antibody ab8226	Abcam PLC, Cambridge, UK Abcam Cat# ab8226, RRID:AB_306371	Mouse monoclonal IgG1 Clone: mAbcam 8226	1:500



**Supplemental Figure S1.** Western blot for ABCA1. Endometrial stromal cells cultured with vehicle or transfected with scrambled siRNA, or siRNA targeting NR1H3 (siNR1H3) or NR1H2 (siNR1H2), were analysed by Western blot for ABCA1 and ACTB abundance. The images of the blots for ABCA1 and ACTB are presented for the three independent experiments.