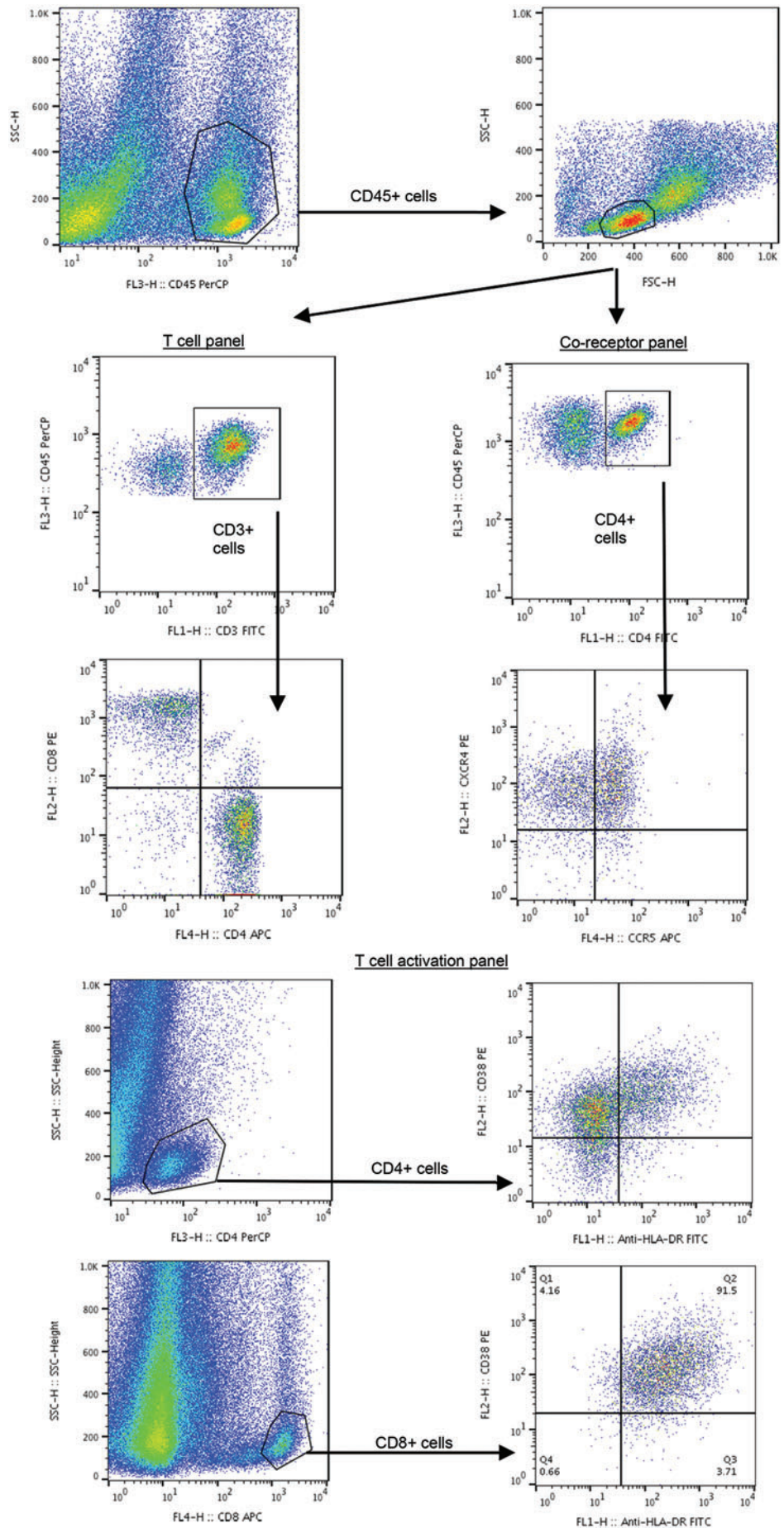


## Supplementary Data



**SUPPLEMENTARY FIG. S1.** Flow cytometry gating strategy for mucosal mononuclear cell phenotype analysis. Three separate antibody panels were used to assess T cells (CD4 and CD8), coreceptor expression (CCR5 and CXCR4), and T cell activation (CD38 and HLA-DR) as described in the Materials and Methods section.