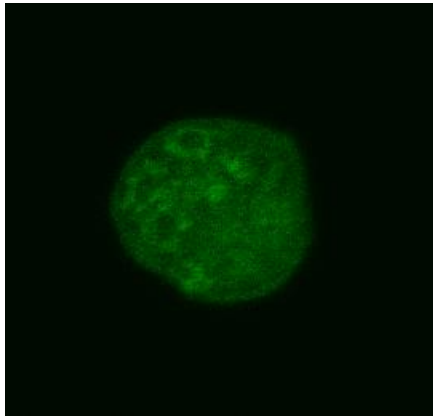
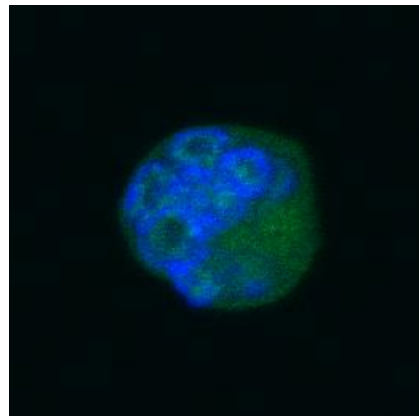


Supplementary Figure 1 Positive control of 72A1(+) cells

72A1 (anti-EBV-gp350/220)
(Alexa Fluor488)



Merged with DAPI



We used 33°C reactivated P3HR-1 cells as a positive control of the 72A1 (anti-gp350/220) stain.

Green signals of Alexa Fluor488 represent 72A1.

Abbreviations

EBV: Epstein-Barr virus

gp: glycoprotein

DAPI: 4', 6-Diamidino-2-phenylindole