

OMTN, Volume 13

Supplemental Information

Cationic Oligospermine-Oligonucleotide

Conjugates Provide Carrier-free Splice

Switching in Monolayer Cells and Spheroids

Marc Nothisen, Phanélie Perche-Létuvée, Jean-Paul Behr, Jean-Serge Remy, and Mitsuharu Kotera

Supplemental Information

Cationic oligospermine-oligonucleotide conjugates provide carrier-free splice switching in monolayer cells and in spheroids

Marc Nothisen¹, Phanélie Perche-Létuvé², Jean-Paul Behr², Jean-Serge Remy¹, and Mitsuharu Kotera²

¹Laboratoire de Chimie Biofonctionnelle, Université de Strasbourg, CNRS, CAMB UMR 7199, LabEx MEDALIS, Faculté de Pharmacie, F-67400 Illkirch, France

²Laboratoire V-SAT, Université de Strasbourg, CNRS, CAMB UMR 7199, LabEx MEDALIS, Faculté de Pharmacie, F-67400 Illkirch, France

Content

SDS-PAGE of S_n -SSOs.....	S2
Delivery of fluorescently labelled SSOs in 3D culture of HeLa pLuc/705 cells analyzed by confocal microscopy.....	S3
MALDI-TOF spectrum of [ON705].....	S4
MALDI-TOF spectrum of S₅ -[ON705].....	S4
MALDI-TOF spectrum of S₁₅ -[ON705].....	S5
MALDI-TOF spectrum of S₂₀ -[ON705].....	S5
MALDI-TOF spectrum of S₂₀ -[ON705mis].....	S6
MALDI-TOF spectrum of S₂₀ -[ON705]-F.....	S6
MALDI-TOF spectrum of [ON705]-F.....	S7
MALDI-TOF spectrum of [ON705]-F (extended).....	S7

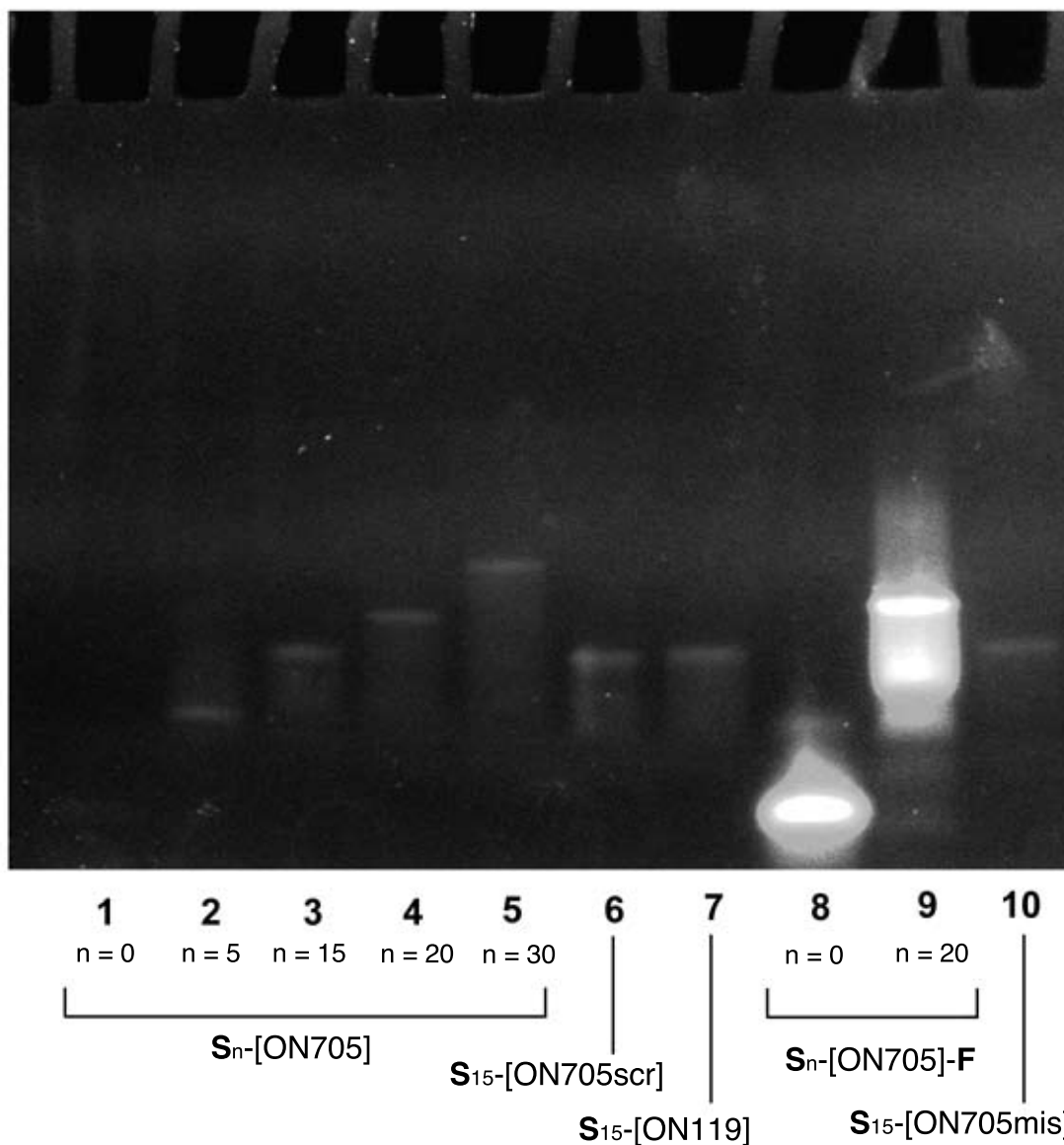


Figure S1. SDS-PAGE of S_n -SSOs. 400 pmols of single strand oligospermine conjugates were loaded on 4-12% Bis-Tris precast gels (CriterionTM XT, Bio-Rad). Electrophoresis was carried out in XT-MES denaturing running buffer during 2 h at 75 V. Precast gels were then incubated in ethidium bromide (0.5 μ g/mL) and analyzed. Lane 1, [ON705]. Lane 2-5, S_n -[ON705] ($n = 5, 15, 20, 30$). Lane 6, S_{15} -[ON705scr]. Lane 7, S_{15} -[ON119]. Lane 8, [ON705]-F. Lane 9, S_{20} -[ON705]-F. Lane 10, S_{15} -[ON705mis].

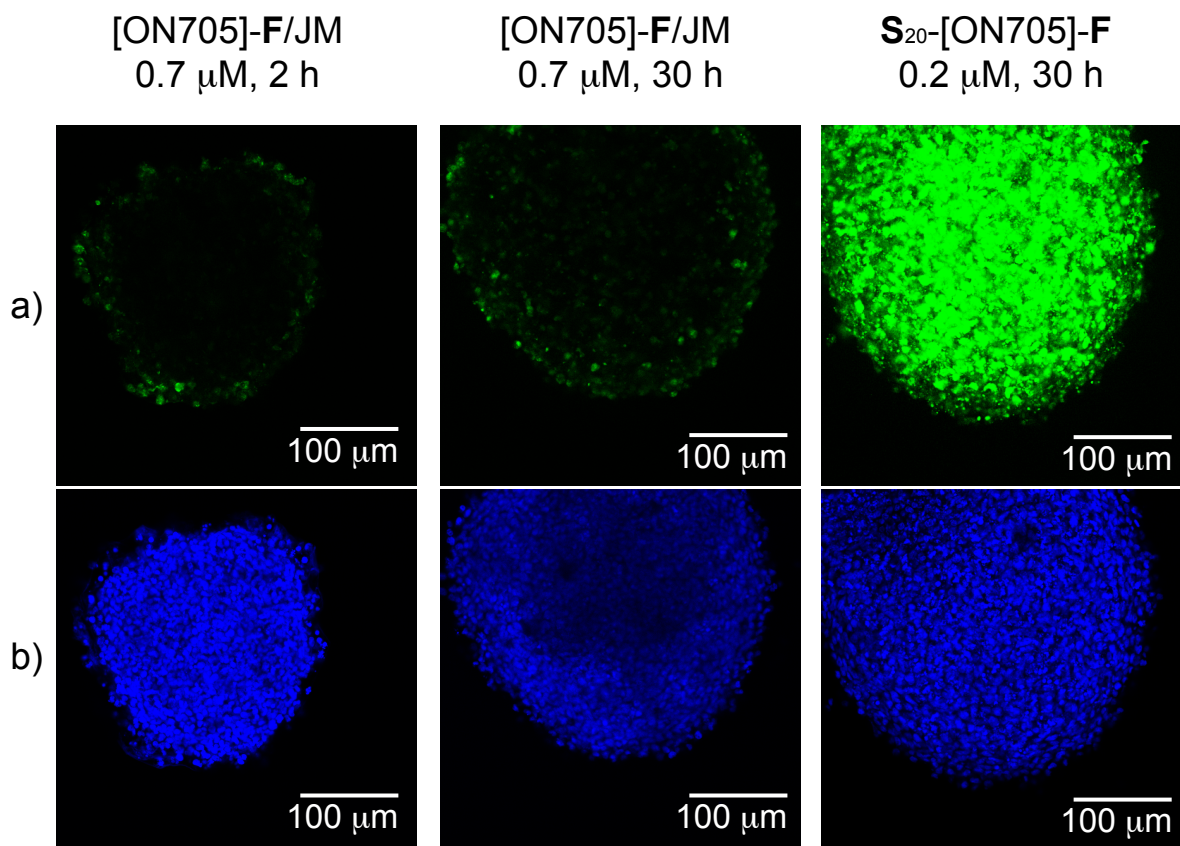


Figure S2. Delivery of fluorescently labelled SSOs in 3D culture of HeLa pLuc/705 cells analyzed by confocal microscopy. To 2-day old HeLa pLuc/705 spheroids in serum-containing DMEM (10%) was added [ON705]-F complexed with JM (JetMessenger™) or **S**₂₀-[ON705]-F. Images were taken after 2 h and 30 h. a) Fluorescein (488 nm), b) Nuclei (405 nm).

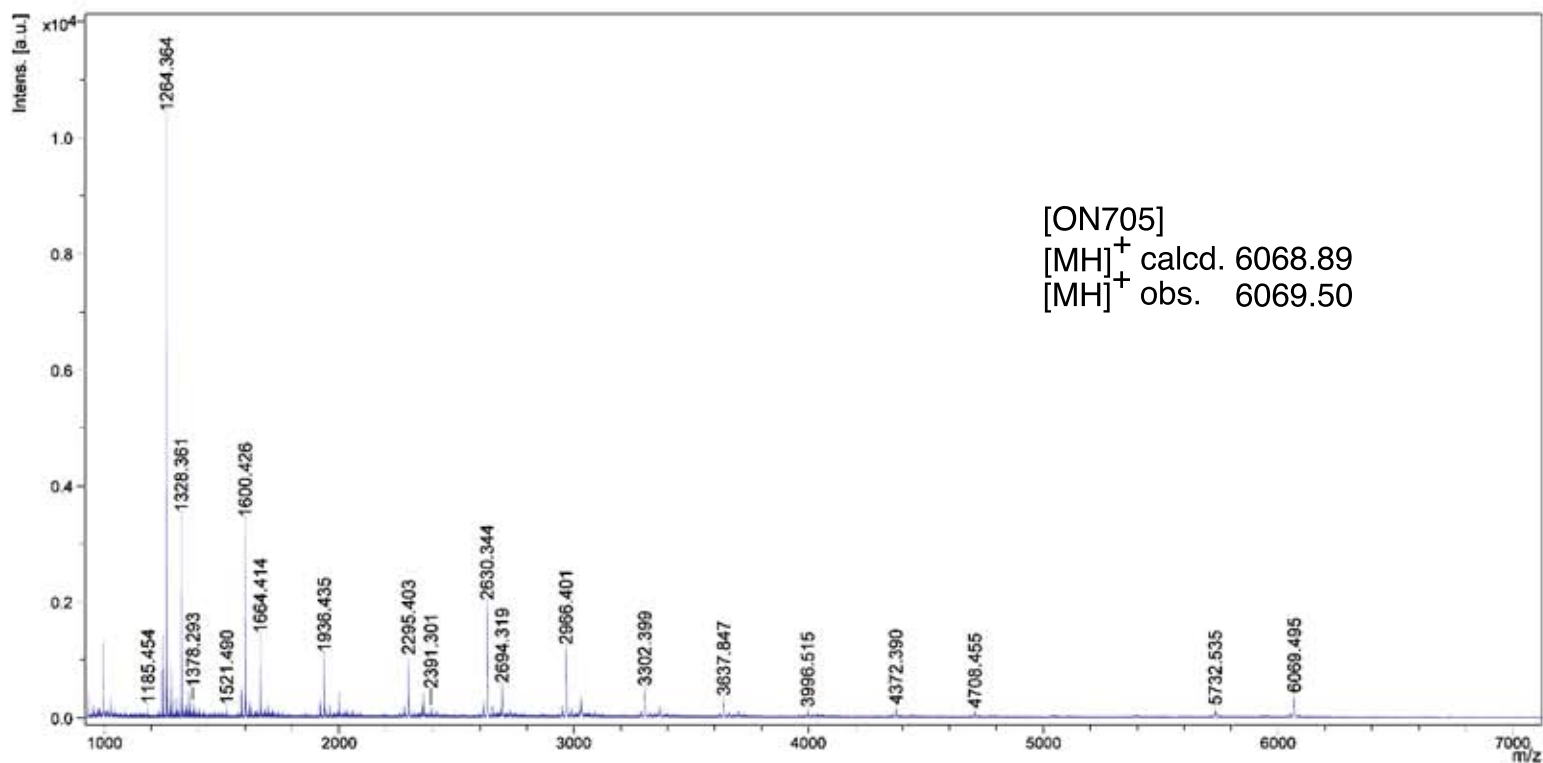


Figure S3. MALDI-TOF spectrum of [ON705]

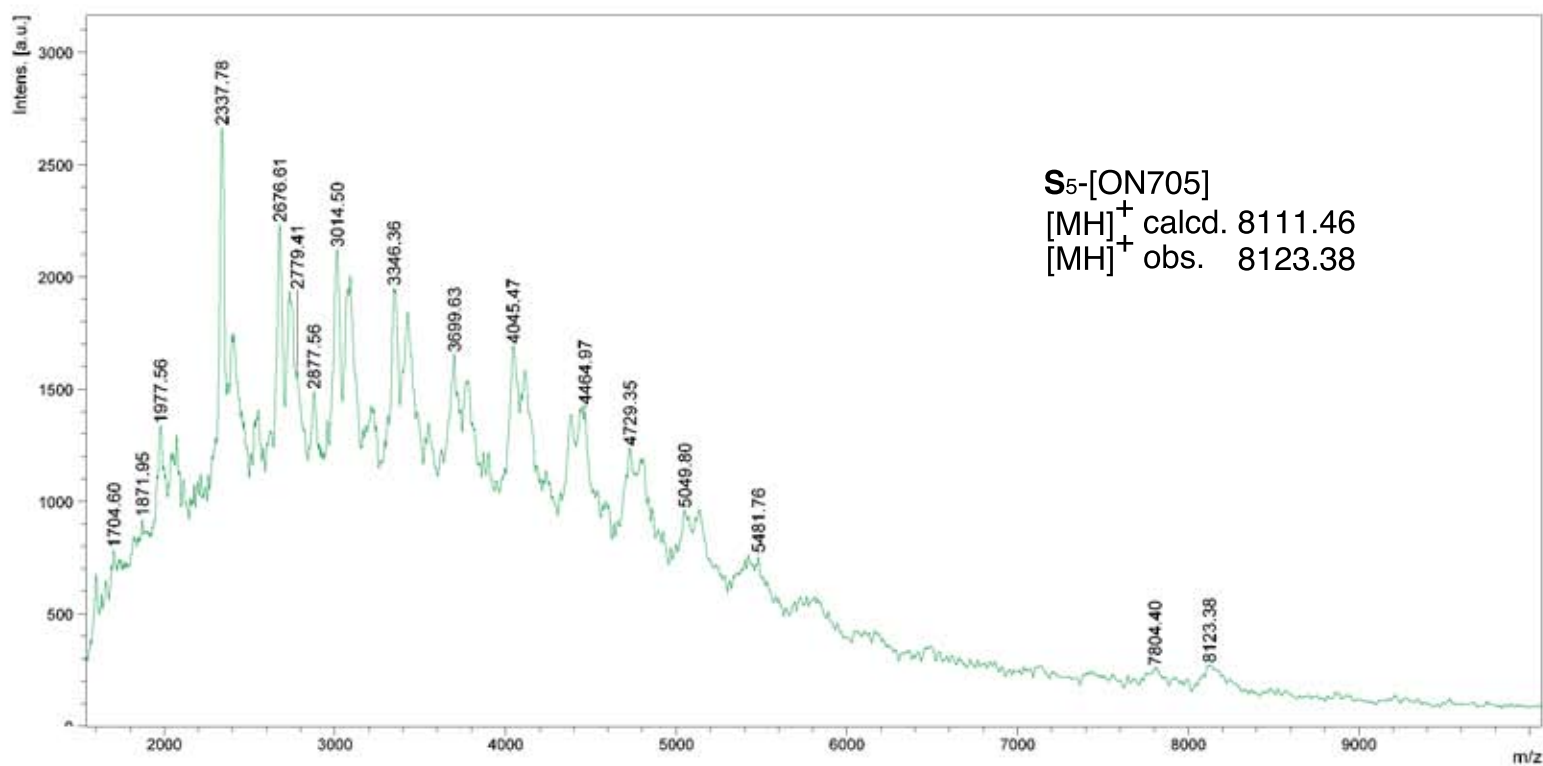


Figure S4. MALDI-TOF spectrum of S5-[ON705]

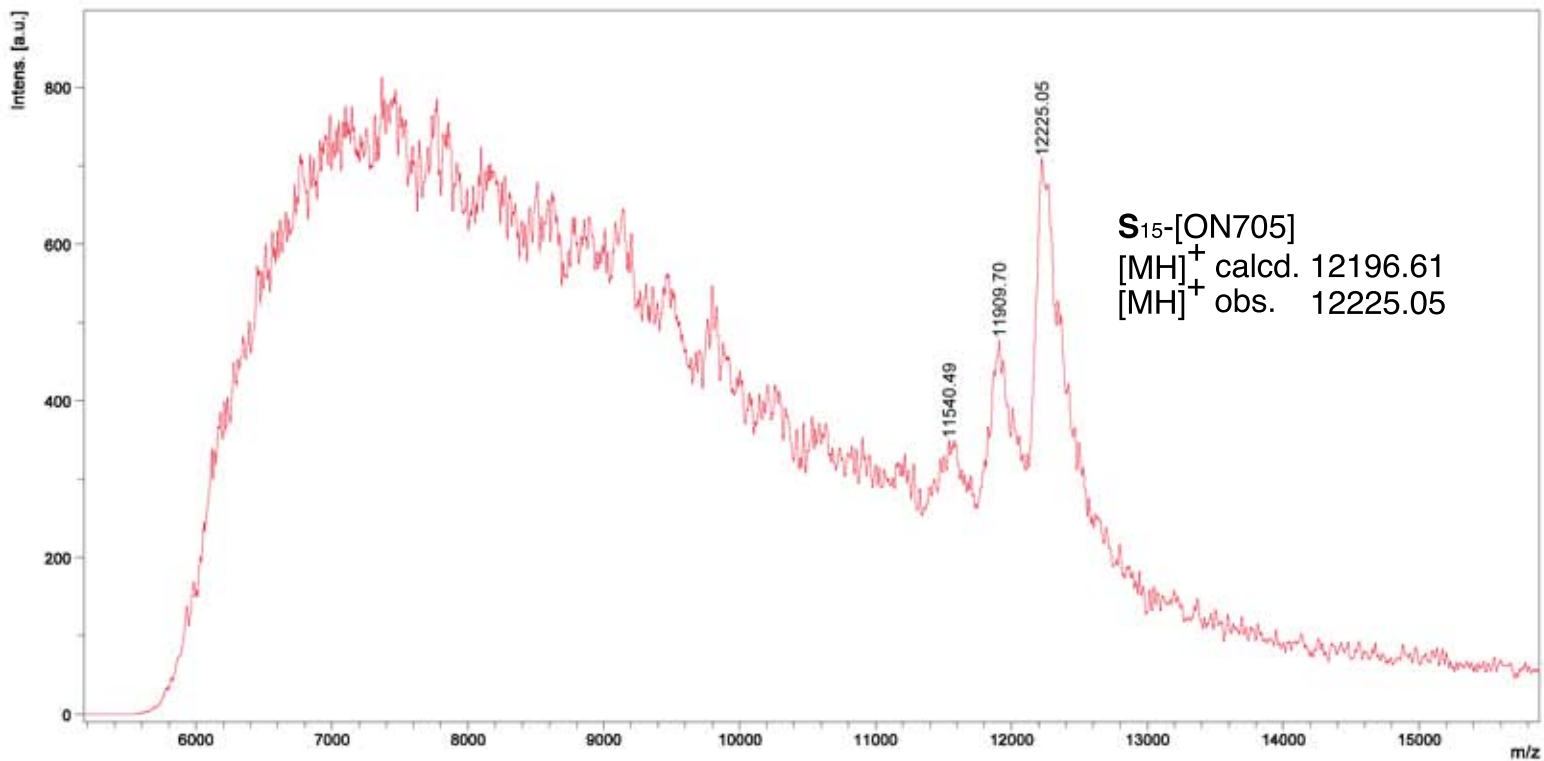


Figure S5. MALDI-TOF spectrum of S15-[ON705]

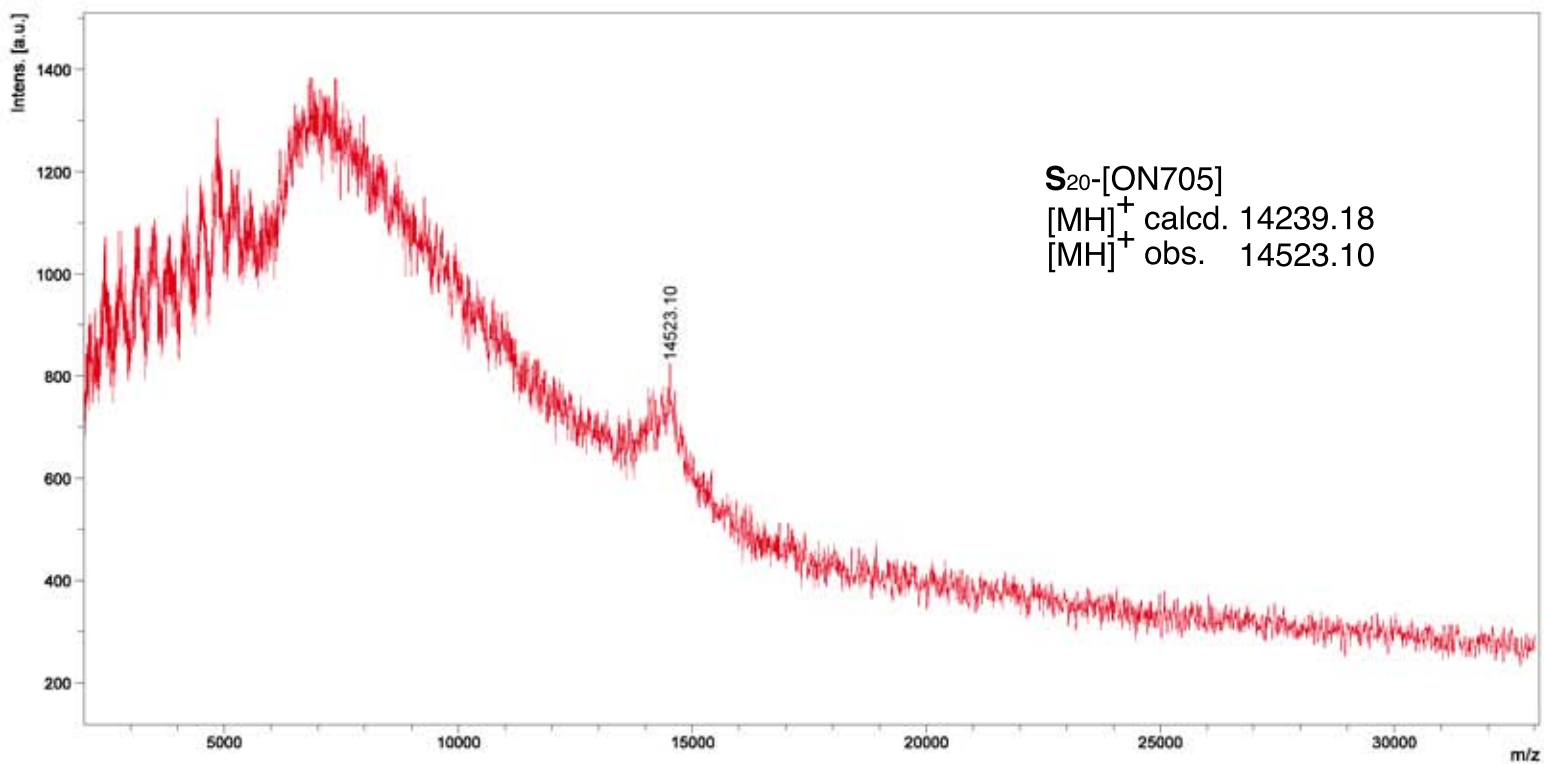


Figure S6. MALDI-TOF spectrum of S20-[ON705]

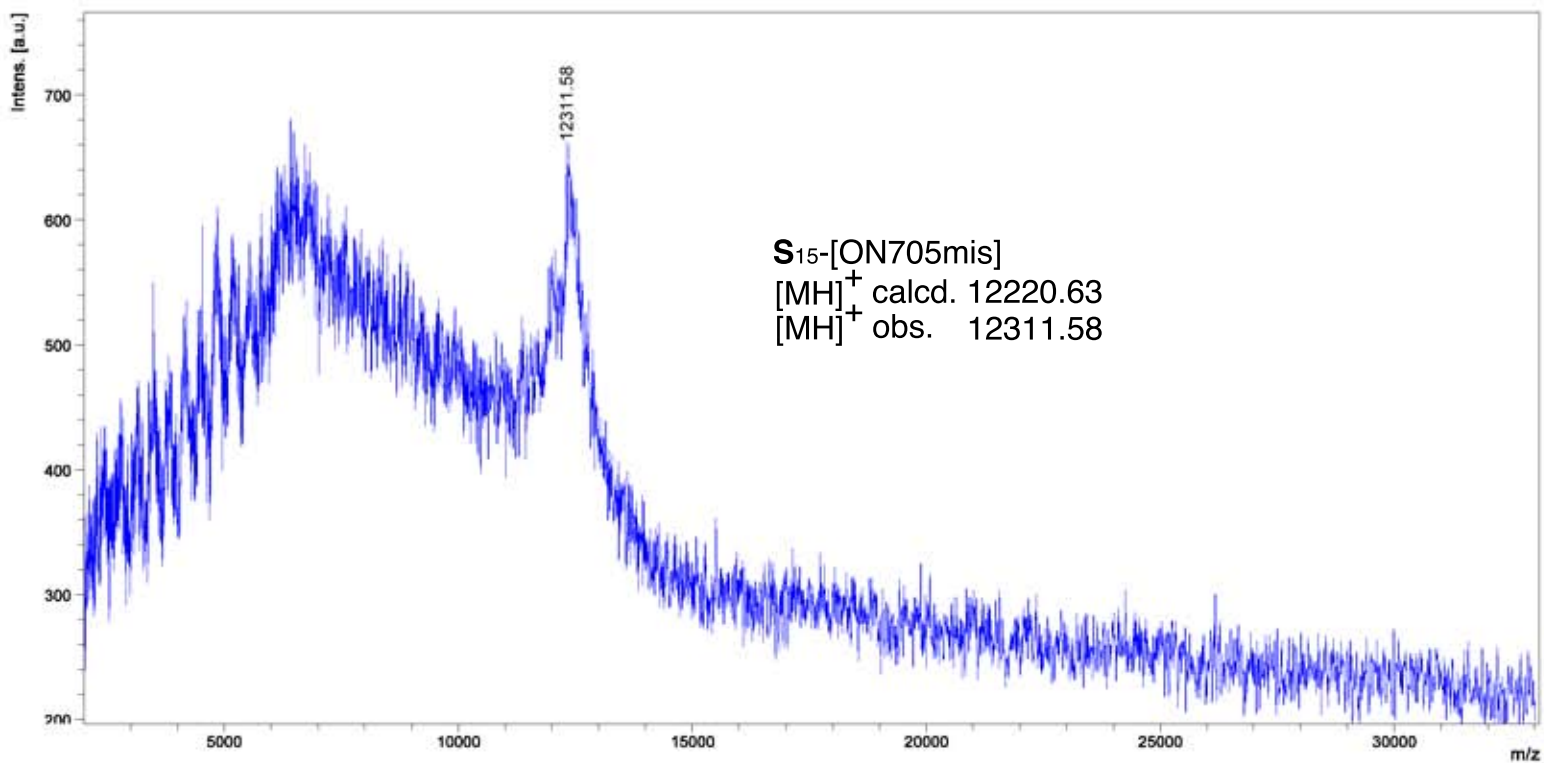


Figure S7. MALDI-TOF spectrum of S20-[ON705mis]

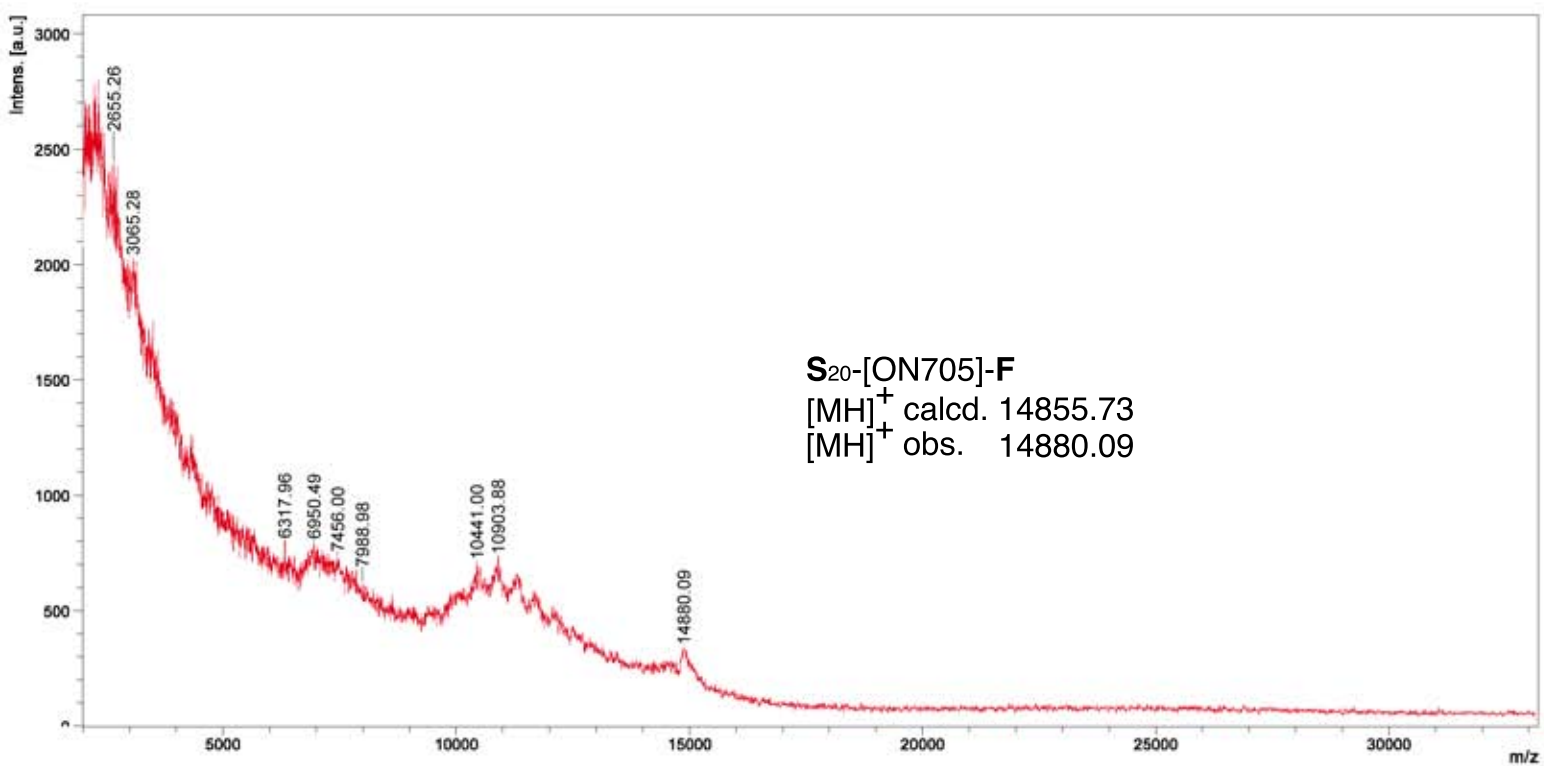


Figure S8. MALDI-TOF spectrum of S20-[ON705]-F

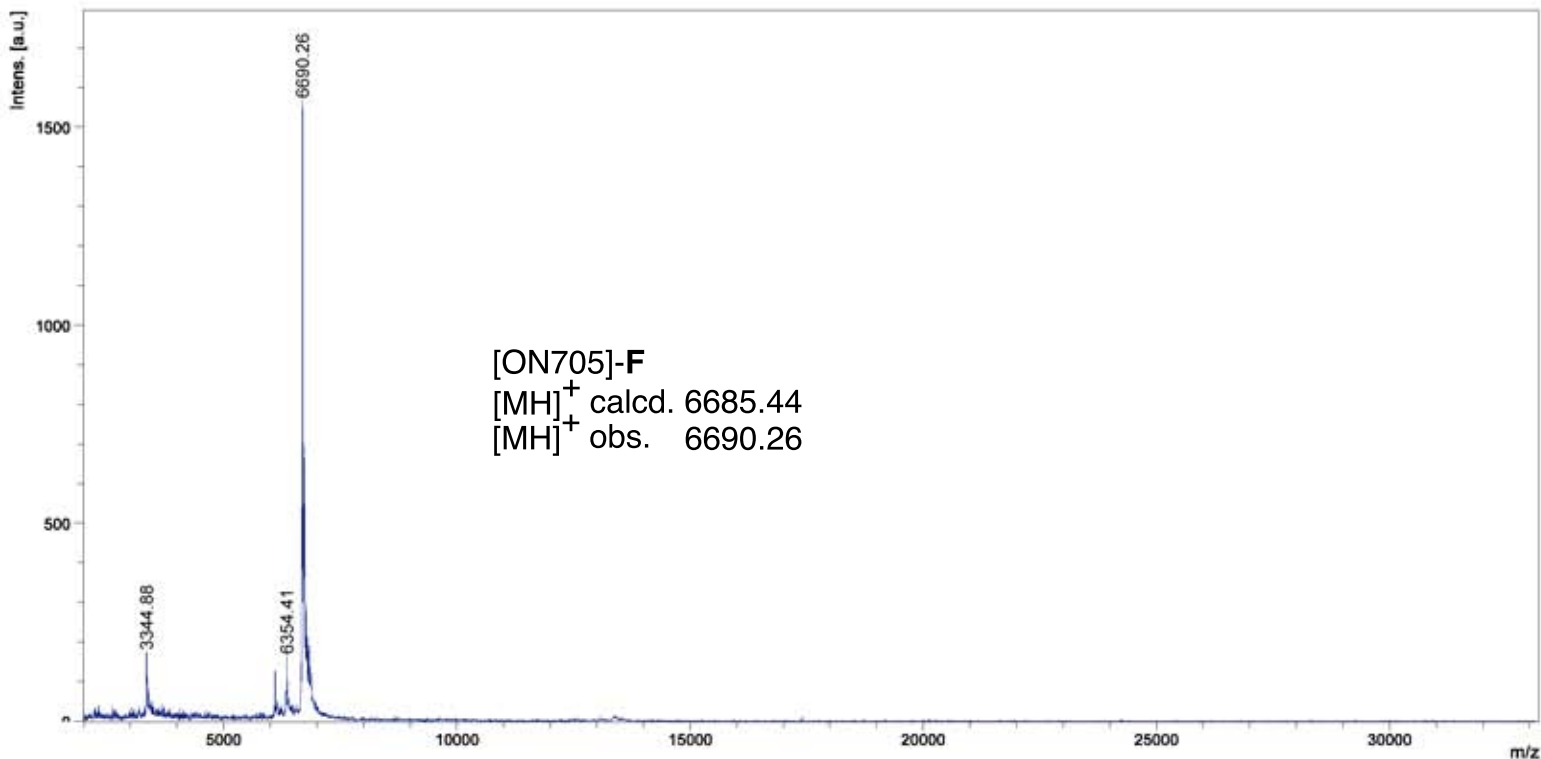


Figure S9. MALDI-TOF spectrum of [ON705]-F

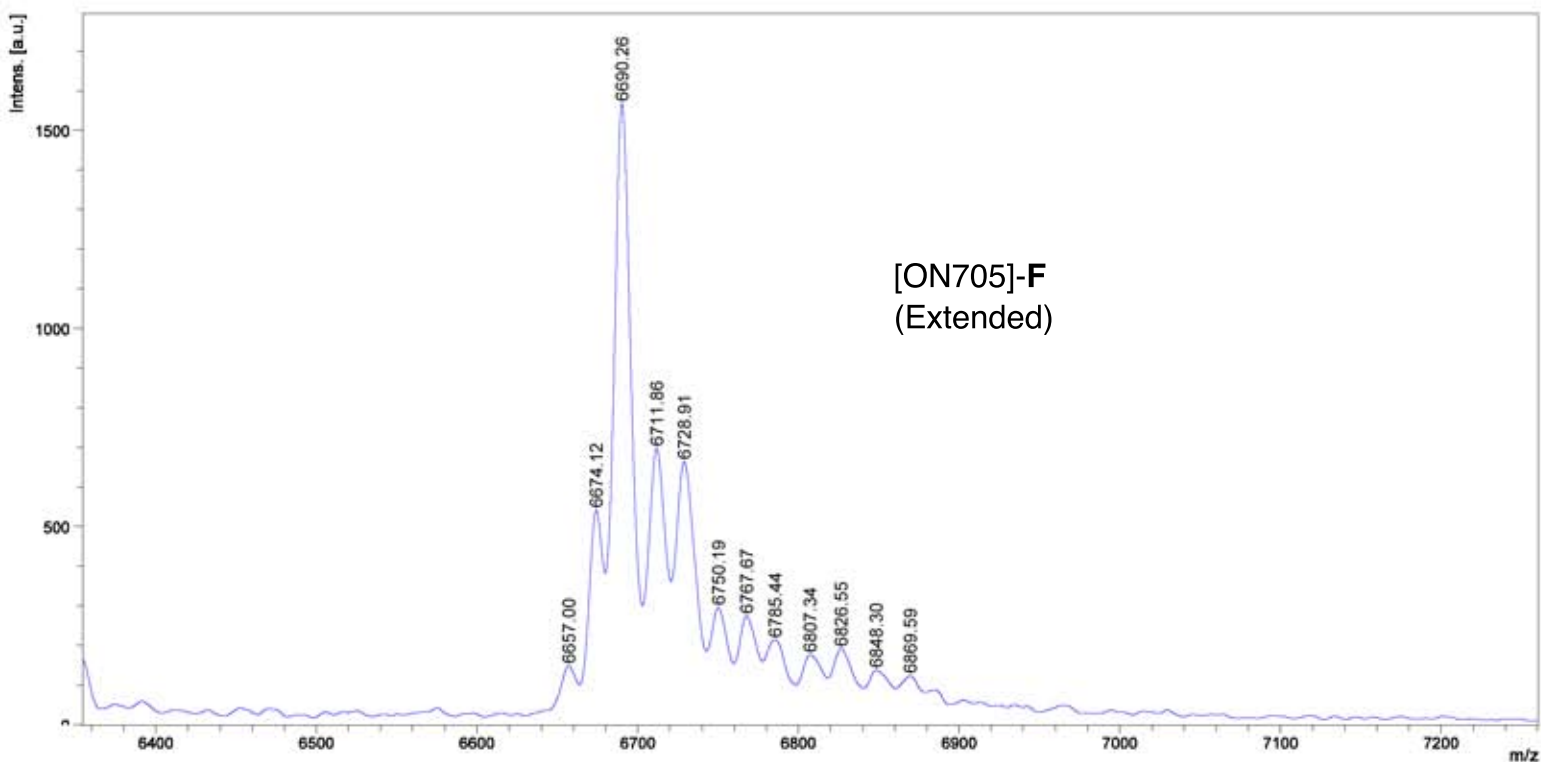


Figure S10. MALDI-TOF spectrum of [ON705]-F (extended)