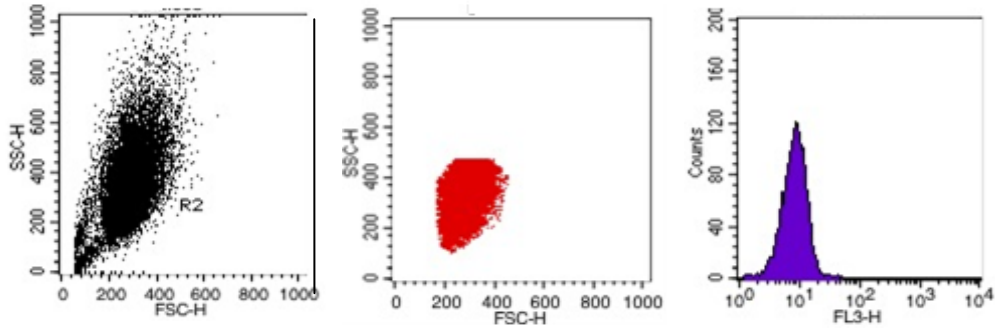


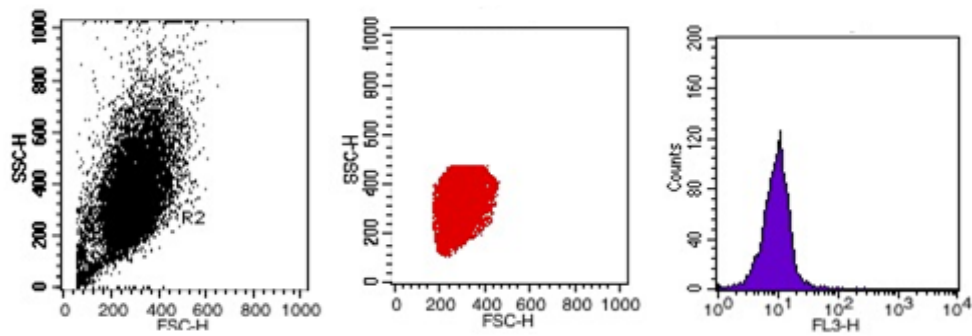
# FACS analysis data of functional characterization of SP cells present in OSCC cell lines

## 1. FACS analysis data for CD 133 in UPCI: SCC 84 (HPV-ve) cell line

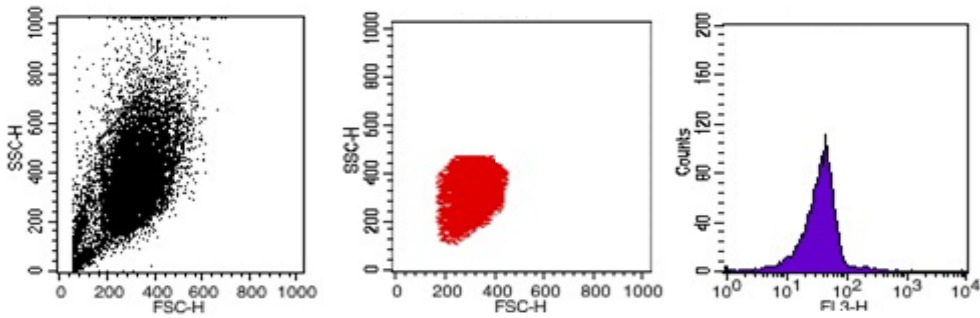
### (a) For monolayer or parental population



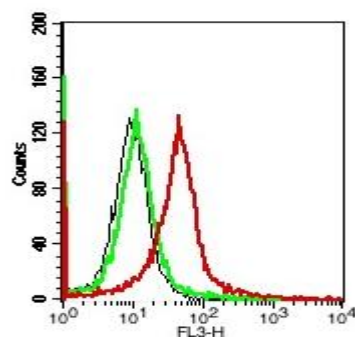
### (b) For Isotype control



### (c) For Sphere forming SP cells

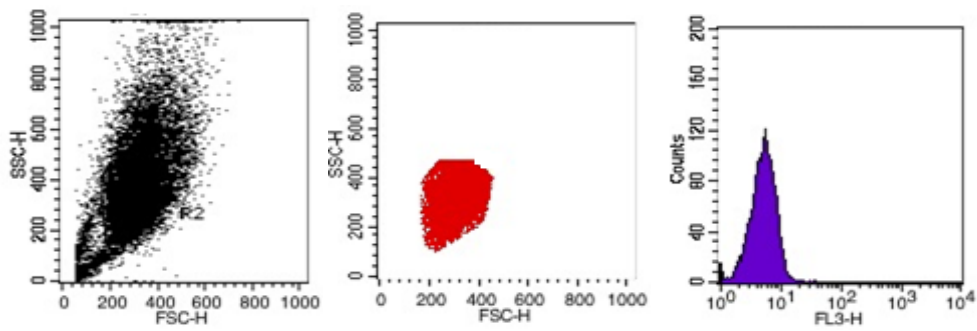


### (d) Overlay graph of parental, isotype and SP cells

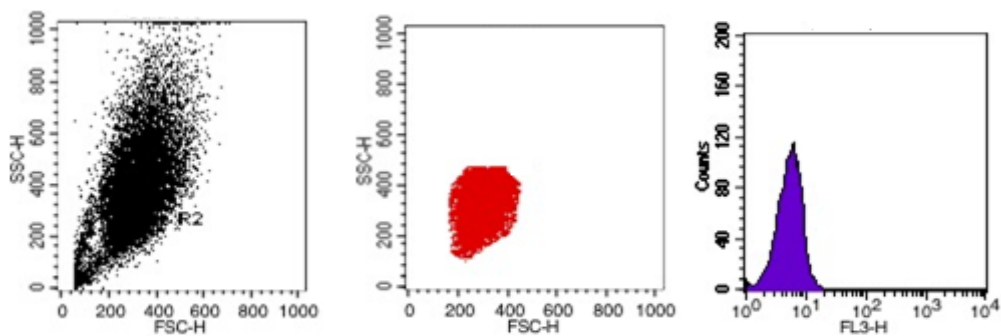


## 2. FACS analysis data for CD 133 in UPCI: SCC 131 (HPV-ve) cell line

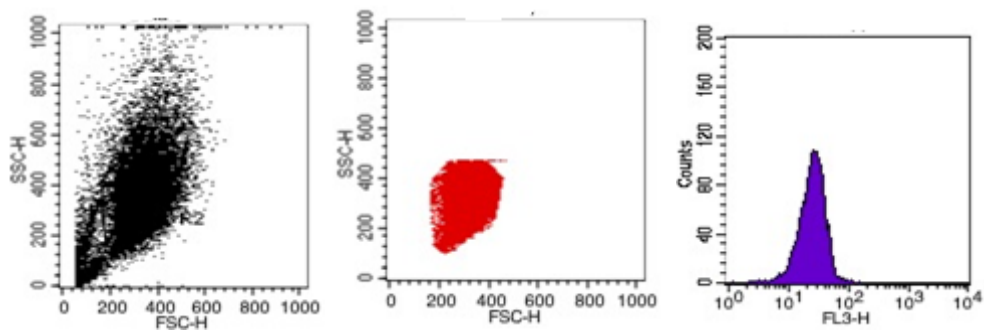
(a) For monolayer or parental population



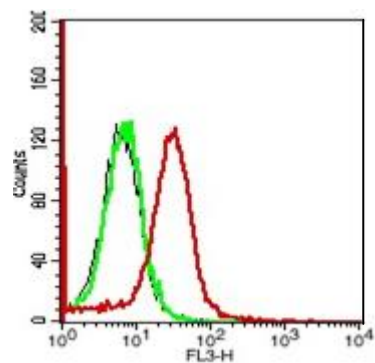
(b) For Isotype control



(c) For Sphere forming SP cells

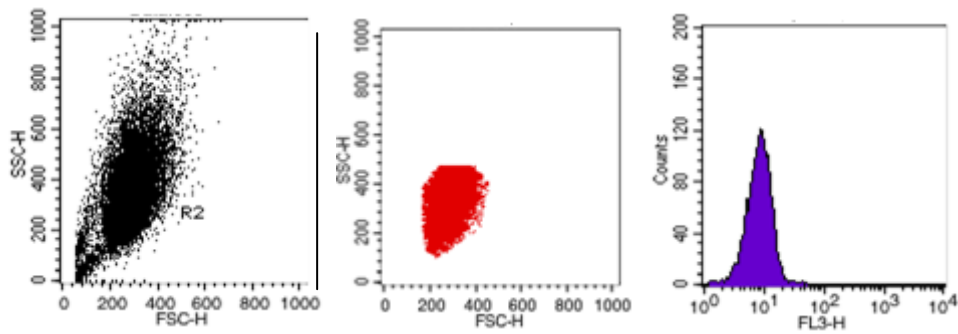


(d) Overlay graph of parental, isotype and SP cells

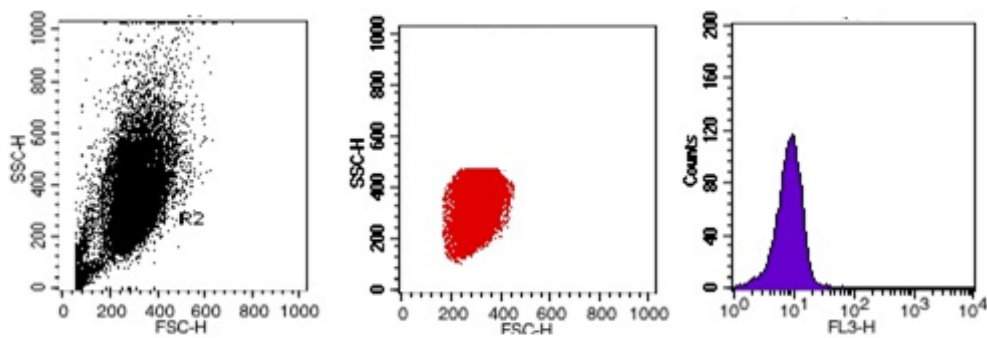


### 3. FACS analysis data for CD 133 in UD SCC-2 (HPV16+ve) cell line

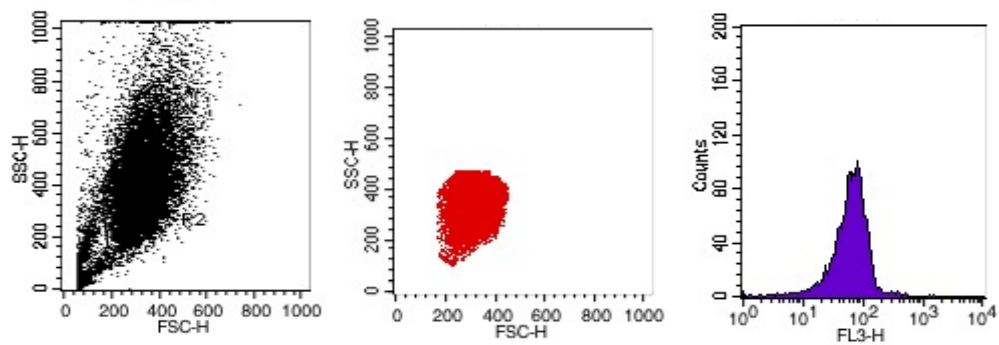
(a) For monolayer or parental population



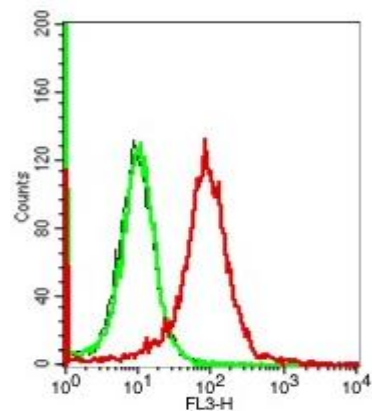
(b) For Isotype control



(c) For Sphere forming SP cells

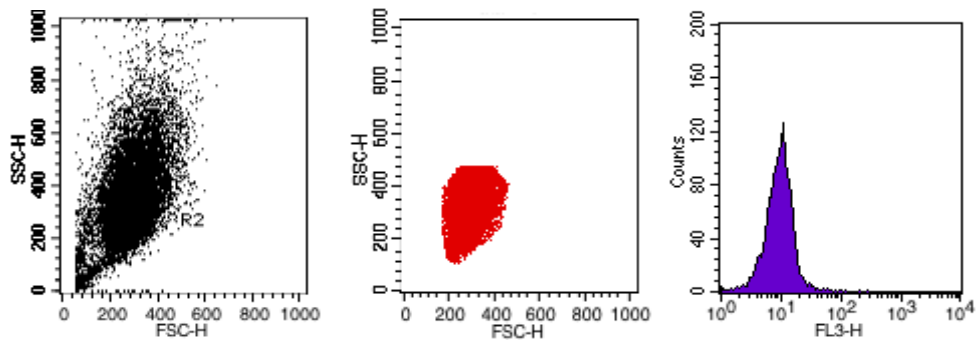


(d) Overlay graph of parental, isotype and SP cells

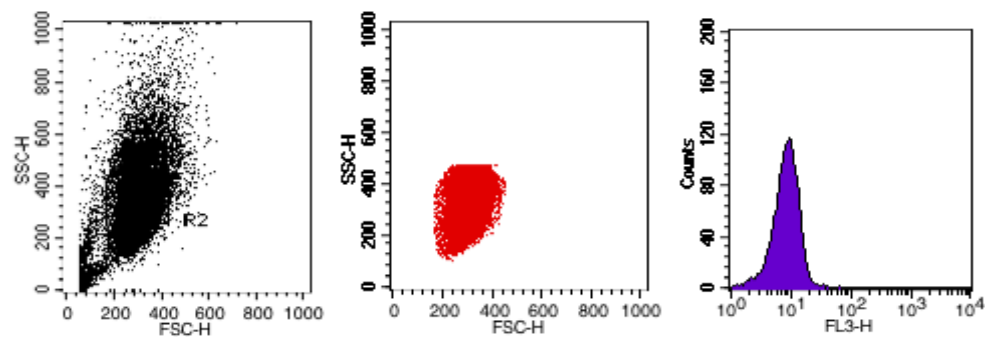


#### 4. FACS analysis data for CD117 in UPCI: SCC 84 (HPV-ve) cell line

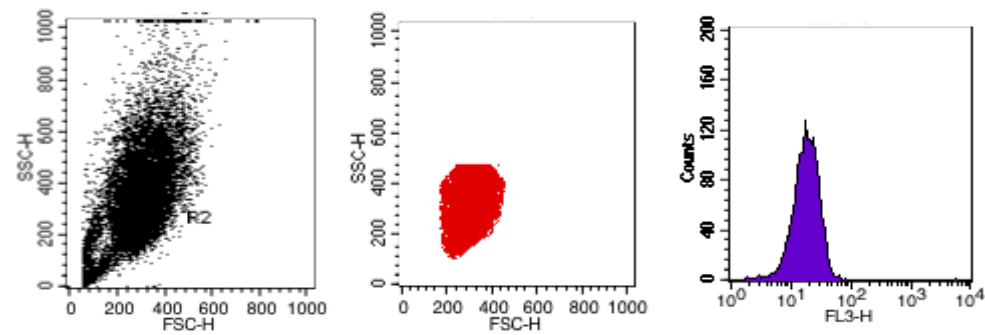
(a) For monolayer or parental population



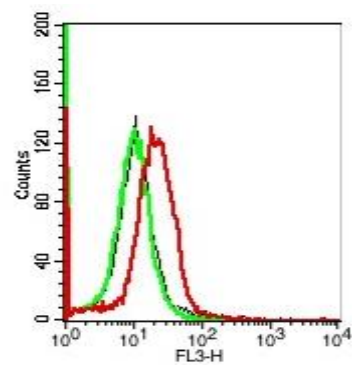
(b) For Isotype control



(c) For Sphere forming SP cells

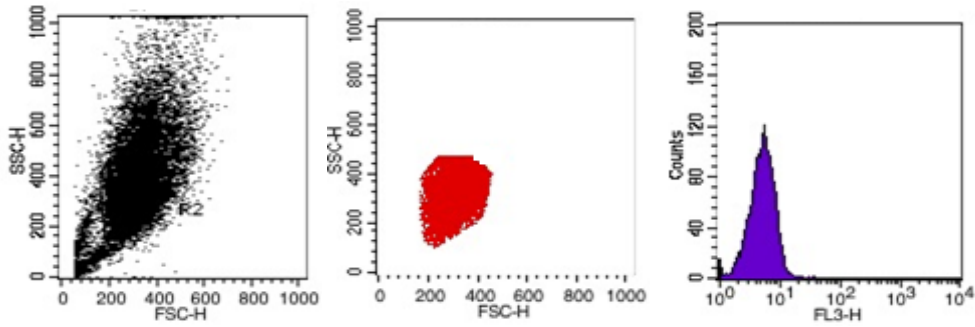


(d) Overlay graph of parental, isotype and SP cells

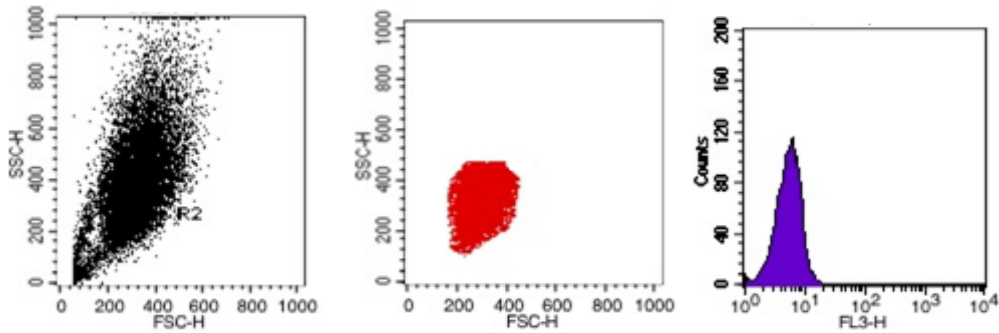


**5. FACS analysis data for CD 117 in UPCI: SCC 131 (HPV-ve) cell line**

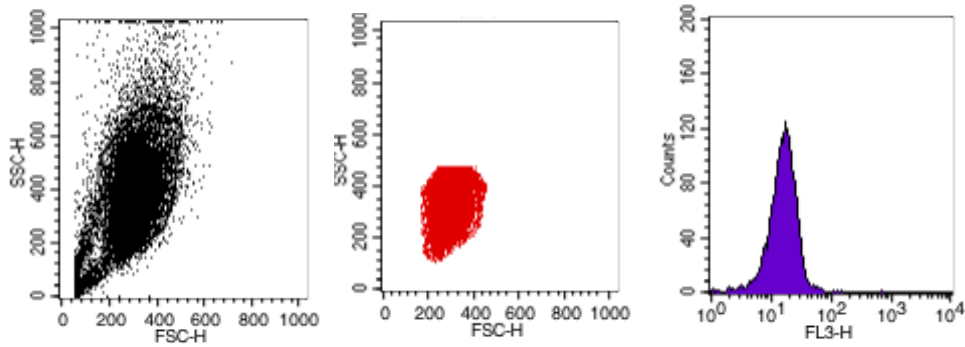
**(a) For monolayer or parental population**



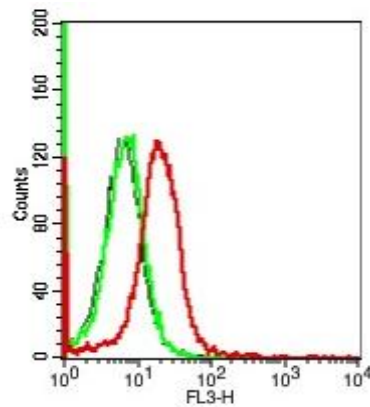
**(b) For Isotype control**



**(c) For Sphere forming SP cells**

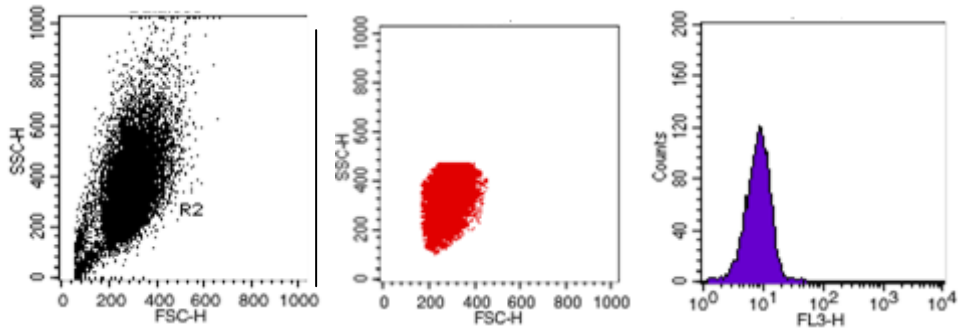


**(d) Overlay graph of parental, isotype and SP cells**

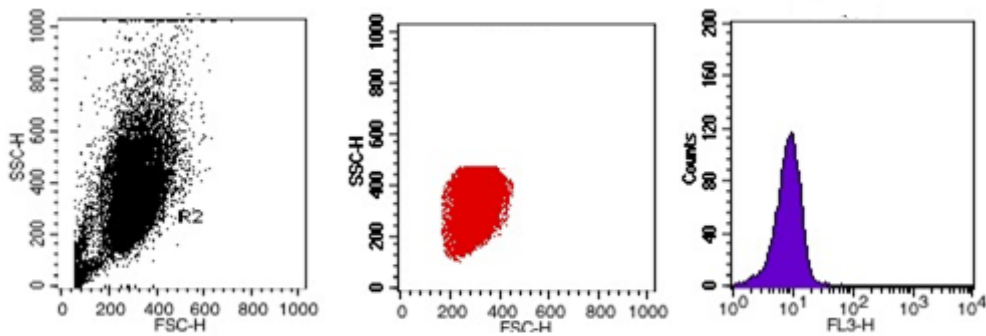


**6. FACS analysis data for CD 117 in UD SCC-2 (HPV16+ve) cell line**

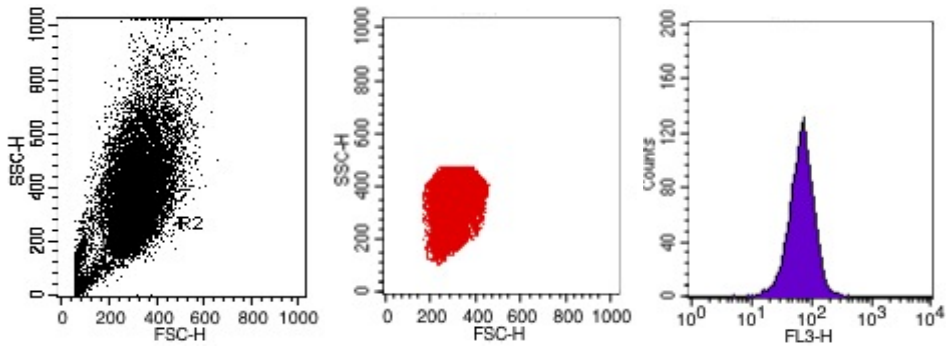
**(a) For monolayer or parental population**



**(b) For Isotype control**



**(c) For Sphere forming SP cells**



**(d) Overlay graph of parental, isotype and SP cells**

