

ADDITIONAL FILE 1

Table S1: Associations with TAGC Pediatric Asthma GWAS SNPs

NHW^a	Gene	SNP	Locus	Allele	OR	P-value^{b,d}	Adj P^e
<i>(385 cases, 4979 controls)</i>	<i>IL1RL1</i>	rs4988958^f	2q12.1	T	1.33	0.0004	0.002
	<i>IL13</i>	rs1295685 ^f	5q31.1	A	1.18	0.073	0.363
	<i>LINC01149</i>	rs2596464^f	6p21.33	C	1.24	0.004	0.021
	<i>IL33</i>	rs12551256 ^f	9p24.1	G	1.08	0.284	1.000
	<i>GSDMB</i>	rs8069176^g	17q12-21	G	1.22	0.008	0.041
AA^a	Gene	SNP	Locus	Allele	OR	P-value^{b,d}	Adj P^e
<i>(325 cases, 2342 controls)</i>	<i>IL1RL1</i>	rs4988958 ^f	2q12.1	C	1.00	0.991	1.000
	<i>IL13</i>	rs1295685 ^f	5q31.1	A	1.12	0.516	1.000
	<i>LINC01149</i>	rs2596464 ^f	6p21.33	C	1.10	0.246	1.000
	<i>IL33</i>	rs12551256 ^f	9p24.1	A	1.02	0.846	1.000
	<i>GSDMB</i>	rs8069176 ^g	17q12-21	A	1.02	0.824	1.000
Meta-analysis^a	Gene	SNP	Locus	Allele	OR	P-value^{c,d}	Adj P^e
<i>(710 cases, 7321 controls)</i>	<i>IL1RL1</i>	rs4988958^f	2q12.1	T	1.18	0.007	0.035
	<i>IL13</i>	rs1295685 ^f	5q31.1	A	1.16	0.059	0.296
	<i>LINC01149</i>	rs2596464^f	6p21.33	C	1.18	0.003	0.017
	<i>IL33</i>	rs12551256 ^f	9p24.1	G	1.05	0.437	1.000
	<i>GSDMB</i>	rs8069176 ^g	17q12-21	G	1.12	0.058	0.291

Abbreviations: TAGC Trans-National Asthma Genetic Consortium, GWAS genome-wide association study; SNP single nucleotide polymorphism; NHW Non-Hispanic Whites; AA African American; OR odds ratio of the effect allele; ^a Each population was run as an independent analysis, and then combined in the meta-analysis; ^b Logistic regression based on case control status; ^c Fixed effect meta-analysis weighted by inverse variance. ^d Adjusted for sex, genetic ancestry. ^e Bonferroni correction for five tests, SNPs with adjusted p<0.05 in **Bold**. ^f SNP is in the reported gene, ^g SNP is near the reported gene.

Figure S1

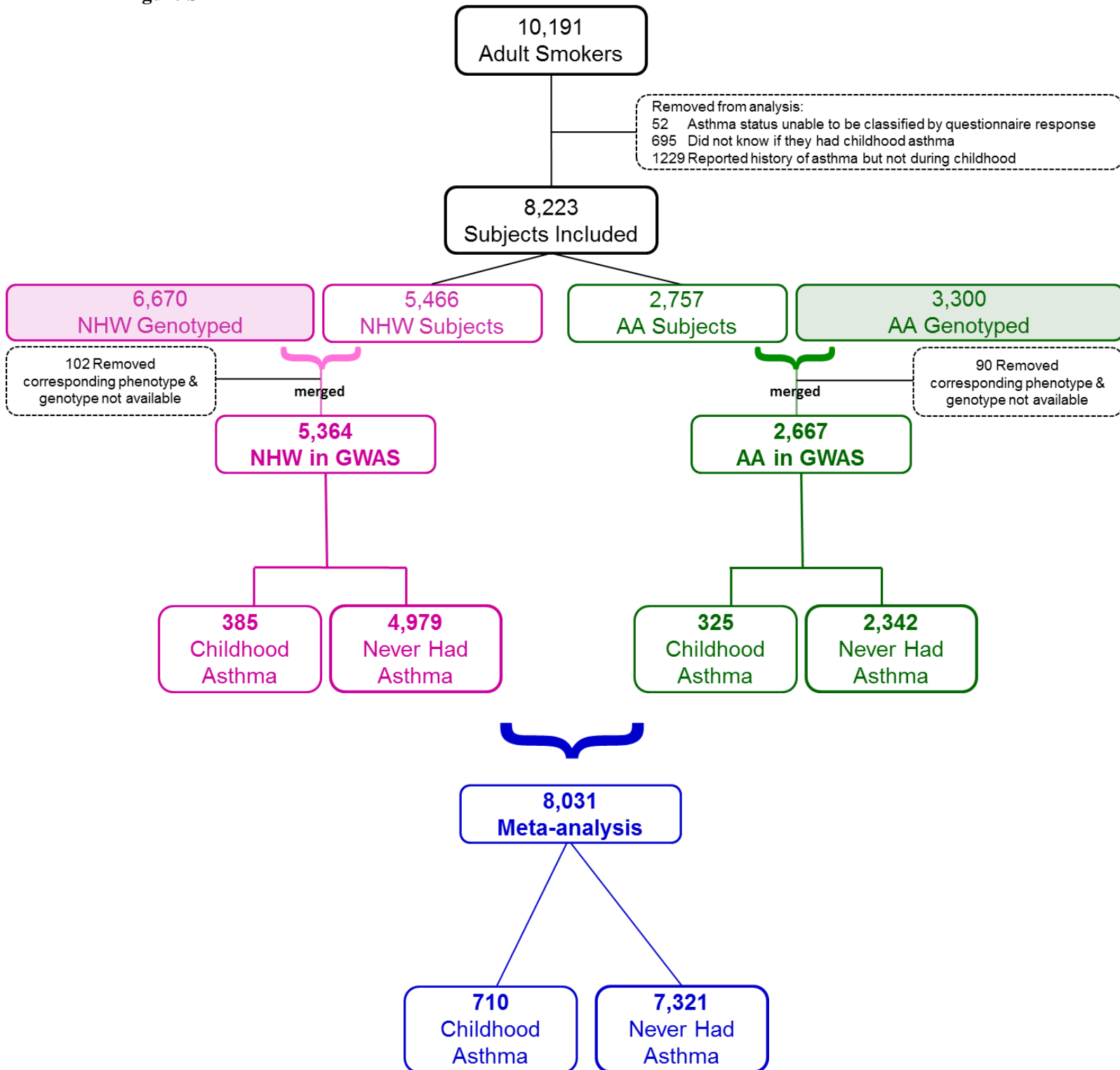


Figure S1: Subject classification. Abbreviations: *NHW* non-Hispanic White; *AA* African American.

Figure S2

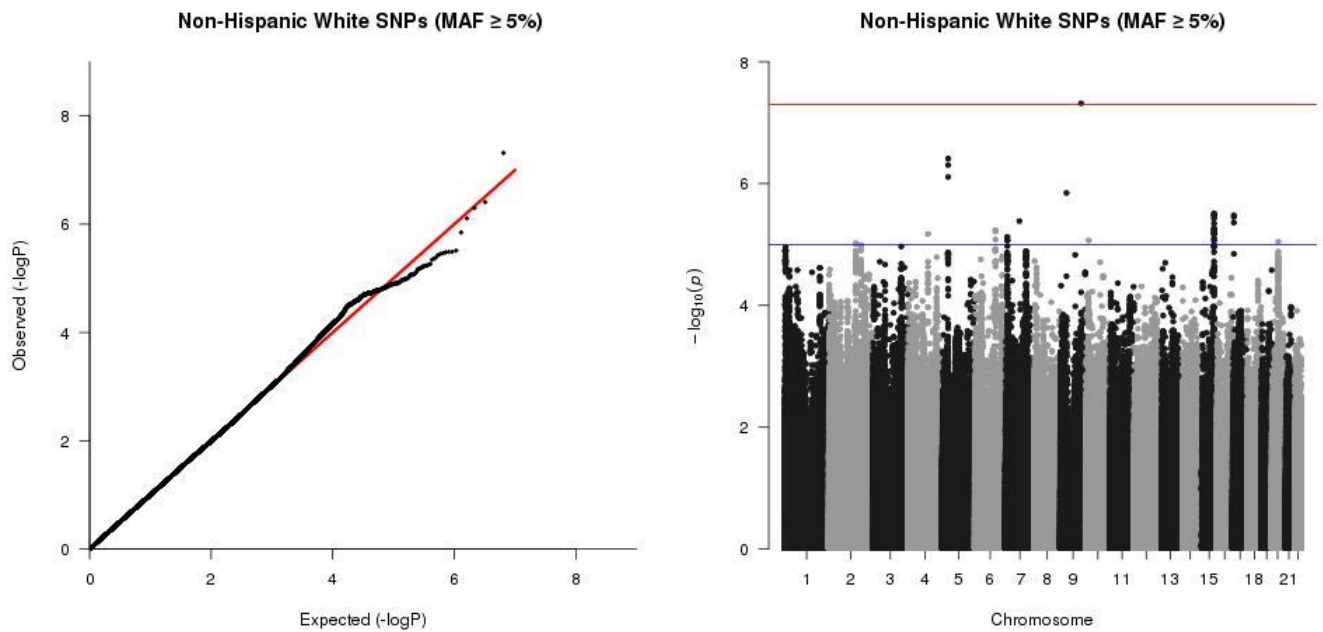


Figure S2: QQ-plot and Manhattan plot of childhood asthma GWAS SNPs in non-Hispanic Whites. Abbreviations: *SNP* single nucleotide polymorphism; *MAF* minor allele frequency.

Figure S3

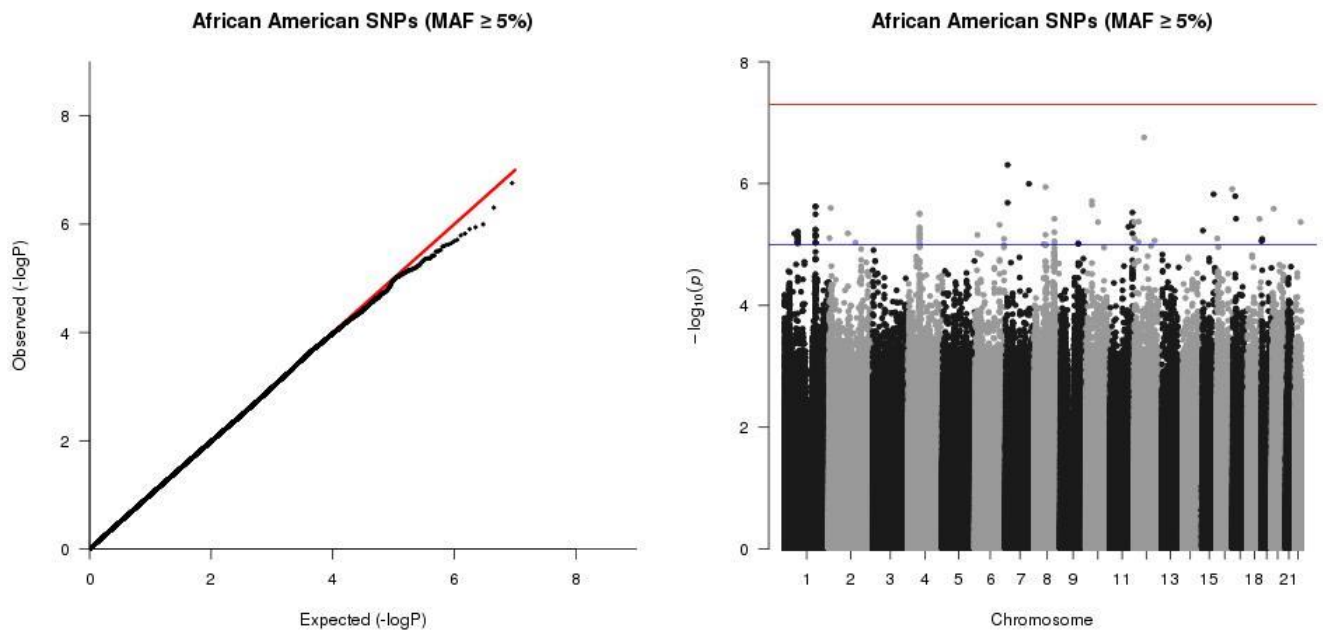


Figure S3: QQ-plot and Manhattan plot of childhood asthma GWAS SNPs in African Americans. Abbreviations: *SNP* single nucleotide polymorphism; *MAF* minor allele frequency.

Figure S4

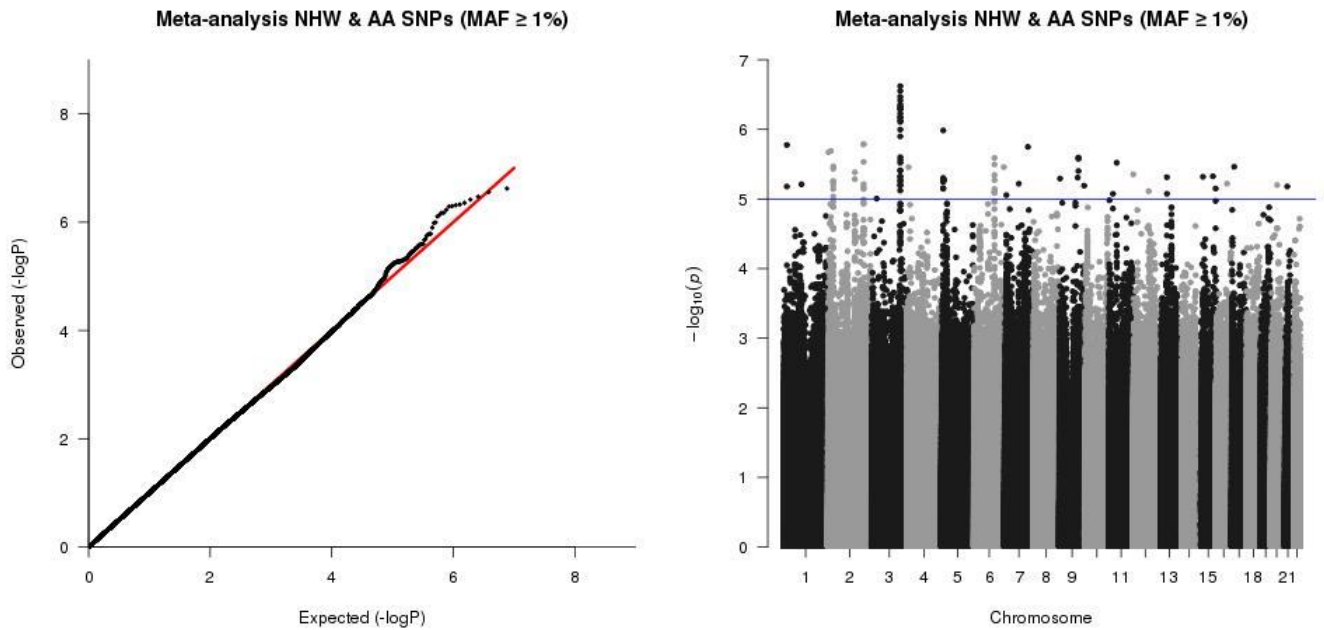


Figure S4: QQ-plot and Manhattan plot of childhood asthma GWAS SNPs from meta-analysis of NHW and AA subjects. Abbreviations: *NHW* non-Hispanic White, *AA* African American, *SNP* single nucleotide polymorphism; *MAF* minor allele frequency.

Figure S5

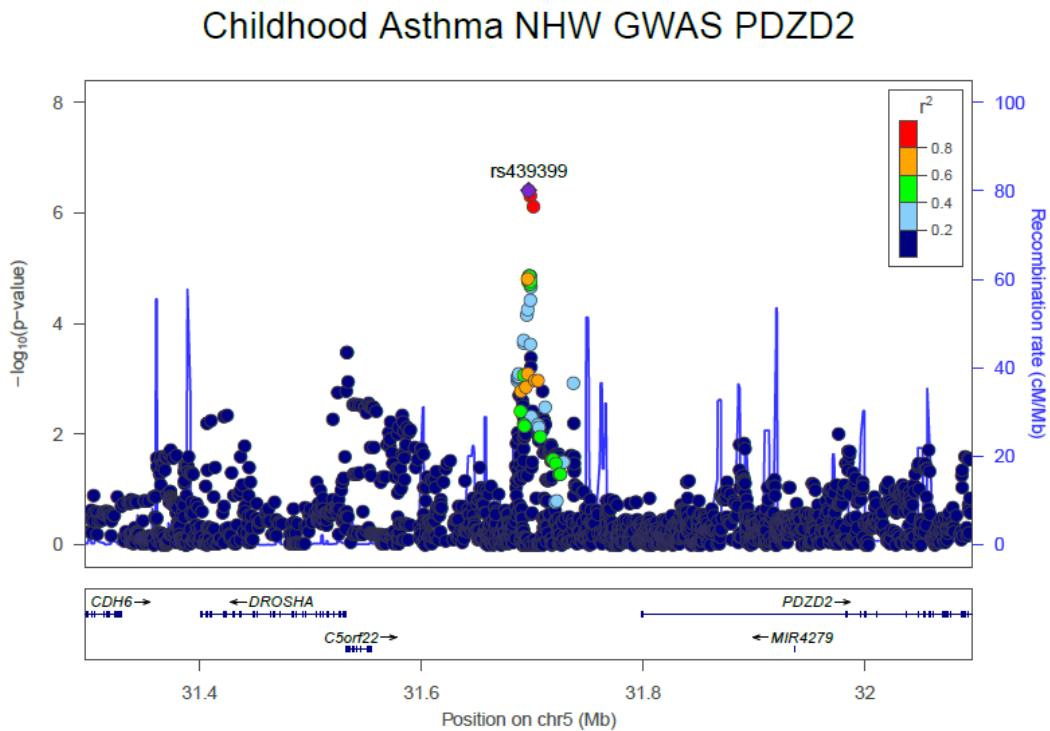


Figure S5: LocusZoom Plots of childhood asthma non-Hispanic white GWAS variants in *PDZD2*.

Figure S6

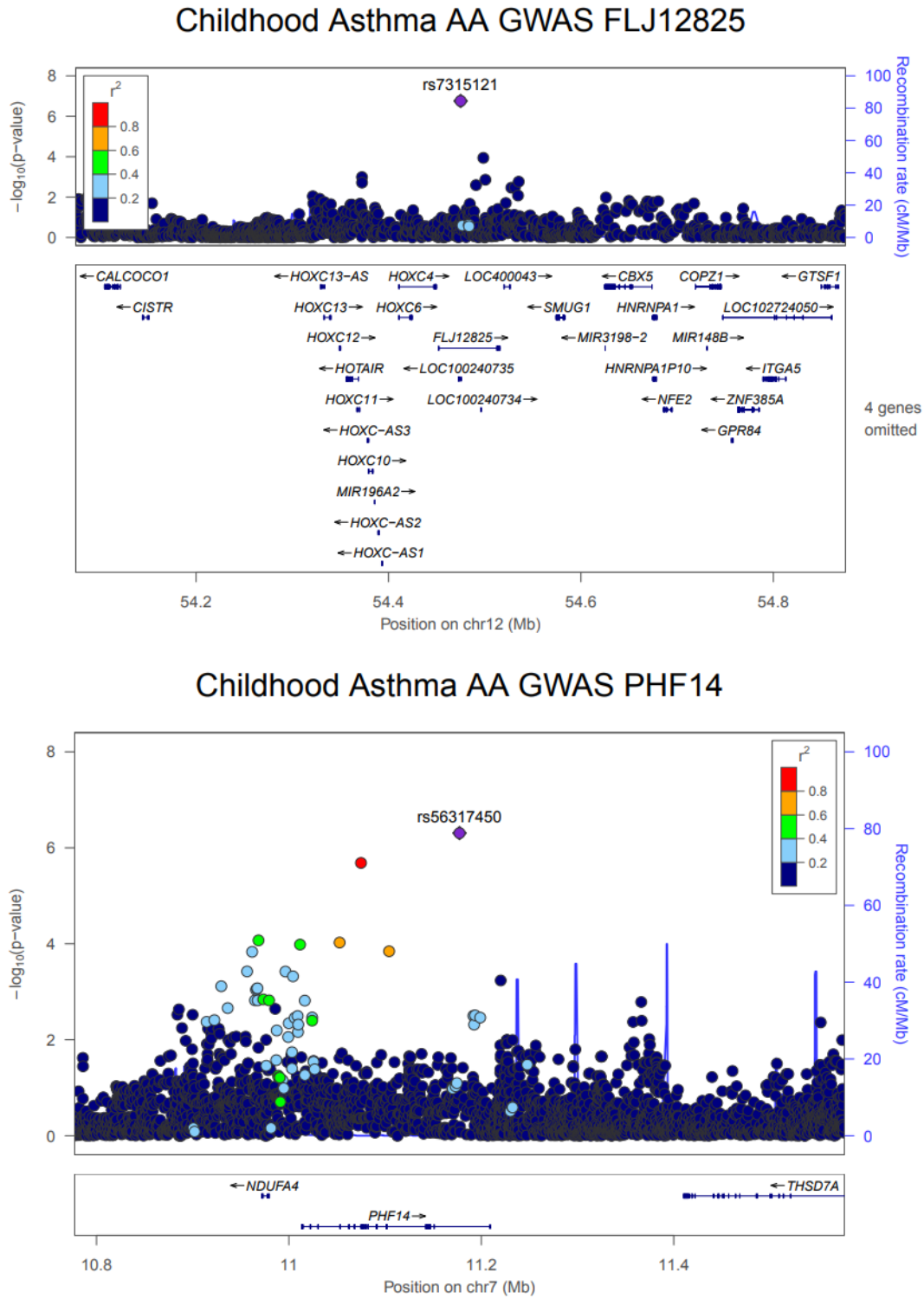


Figure S6: LocusZoom Plots of childhood asthma African American GWAS variants in regions of interest in *FLJ12825* and *PHF14*.

Figure S7

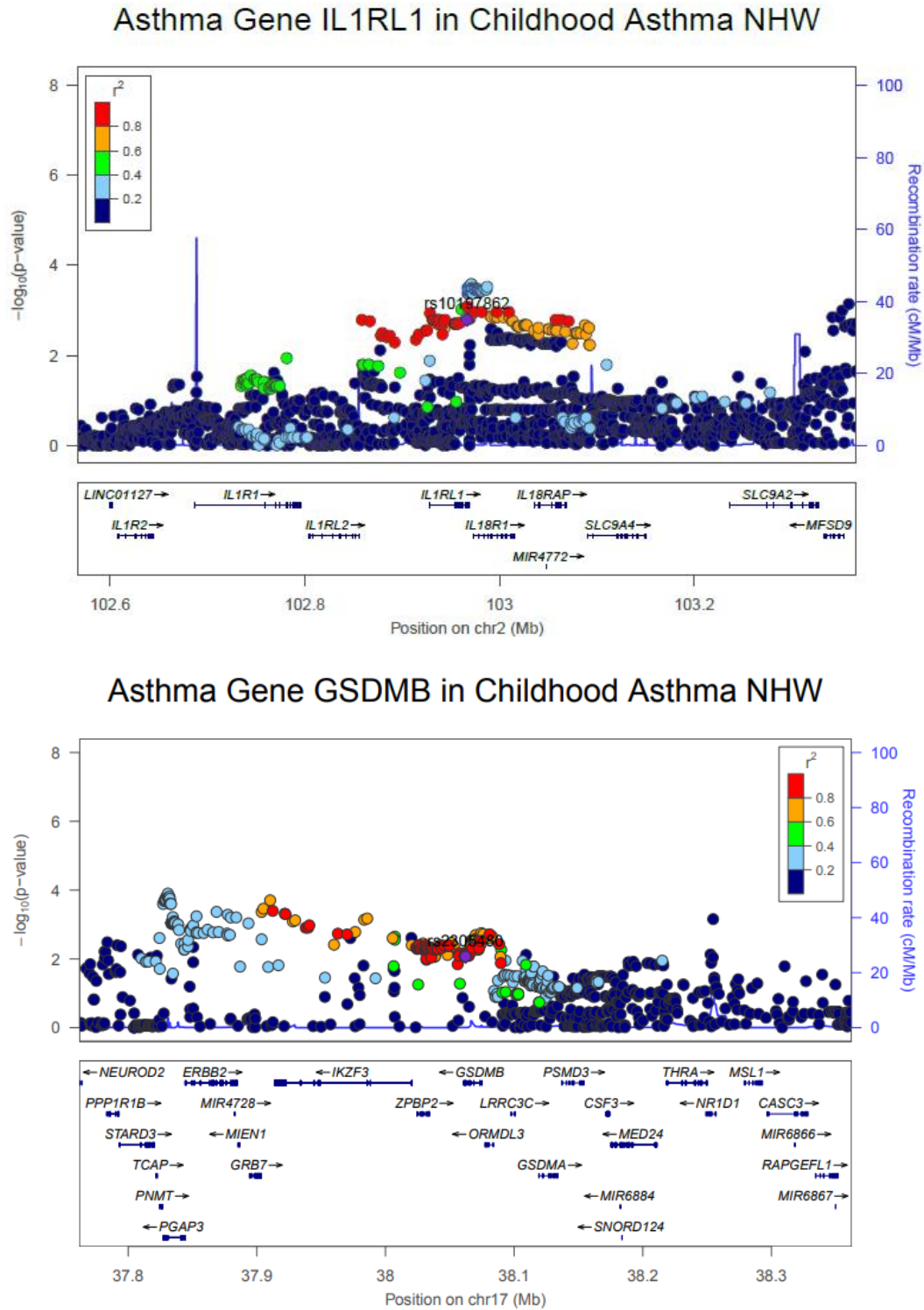
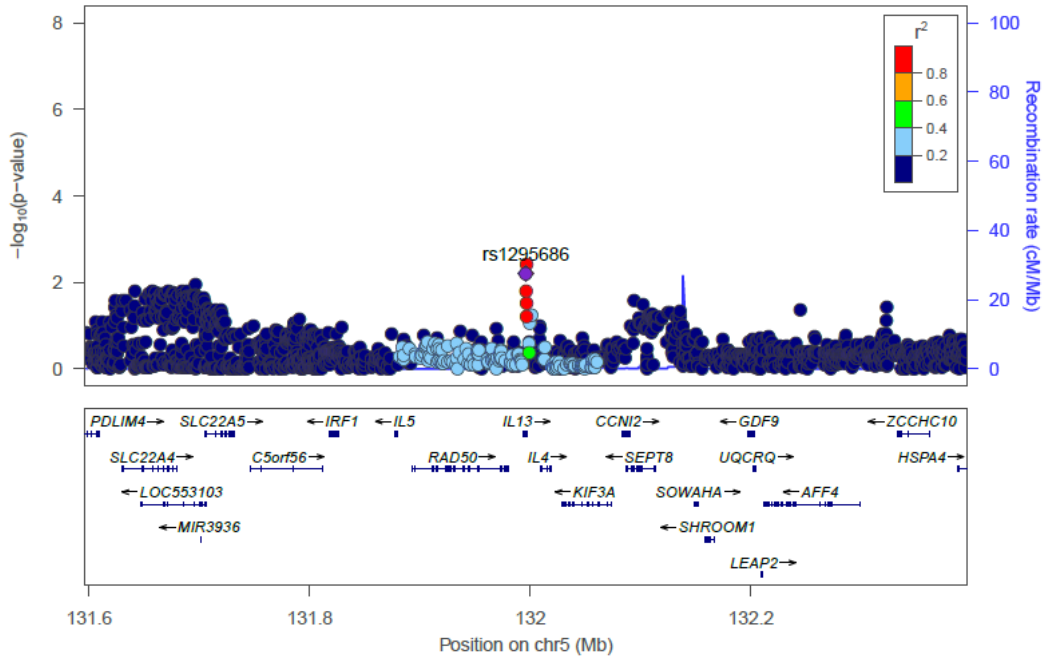


Figure S7: In non-Hispanic whites the childhood asthma GWAS found association with the known asthmal genes *IL1RL1* (rs10197862, adj p = 0.011) and *GSDMB* (rs2305480, adj p = 0.060).

Figure S8

Asthma Gene IL13 in Childhood Asthma Meta-analysis



Asthma Gene C11orf30 in Childhood Asthma Meta-analysis

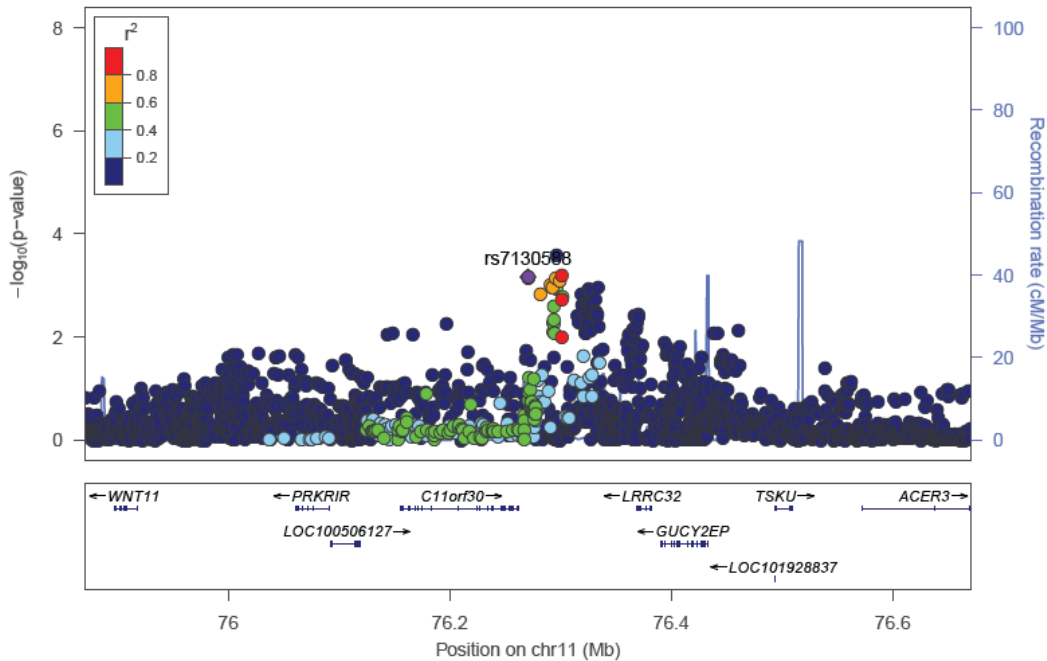


Figure S8: Meta-analysis of NHW and AA subjects in this study found association with a known asthma variants in IL13 (rs1295686) and near the *C11orf30*-*LRRC32* region (rs7130588).