

**Manuscript title:**

Chronic p27<sup>Kip1</sup> Induction by Dexamethasone Causes Senescence Phenotype and Permanent Cell Cycle Blockade in Lung Adenocarcinoma Cells Over-expressing Glucocorticoid Receptor

**Authors:**

Mugdha Patki, Thomas McFall, Rayna Rosati, Yanfang Huang, Agnes Malysa, Lisa Polin, Abigail Fielder, Mike R. Wilson, Fulvio Lonardo, Jessica Back, Jing Li, Larry H. Matherly, Gerold Bepler and Manohar Ratnam

## **Scans of original autorads for the cropped western blot data in the manuscript Figures**

**Please Note: When a western blot is probed for GAPDH loading control (example, Figure 1B), we typically use a single film to obtain multiple exposures by sliding the blot to different positions on the same film. This helps to avoid overexposure of the relatively strong GAPDH bands.**

**Each cropped image in the manuscript is from a single western blot, without any splicing of sample lanes.**

Figure 1B\_GR

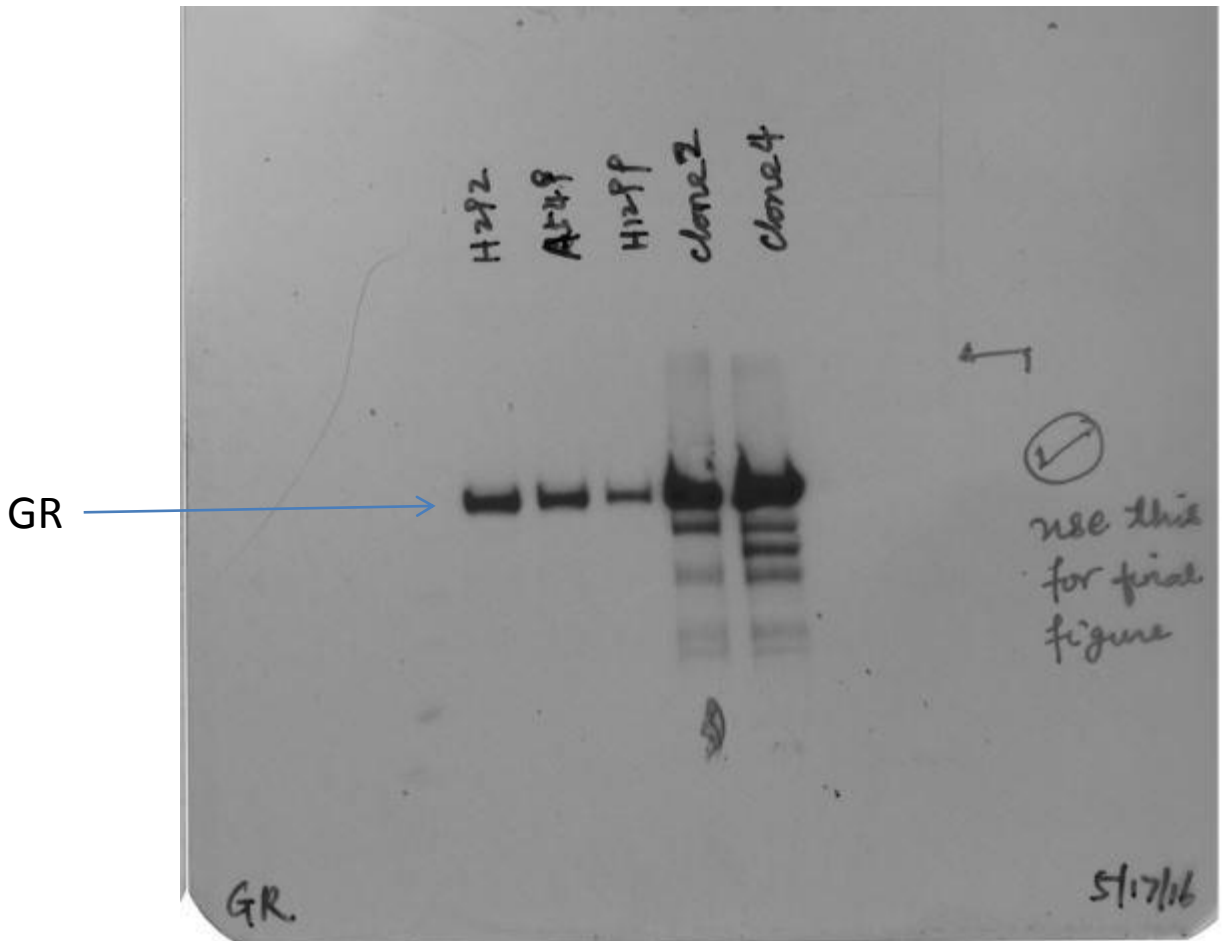




Figure 5A\_A549\_Clone2\_H1299\_Clone4\_p16

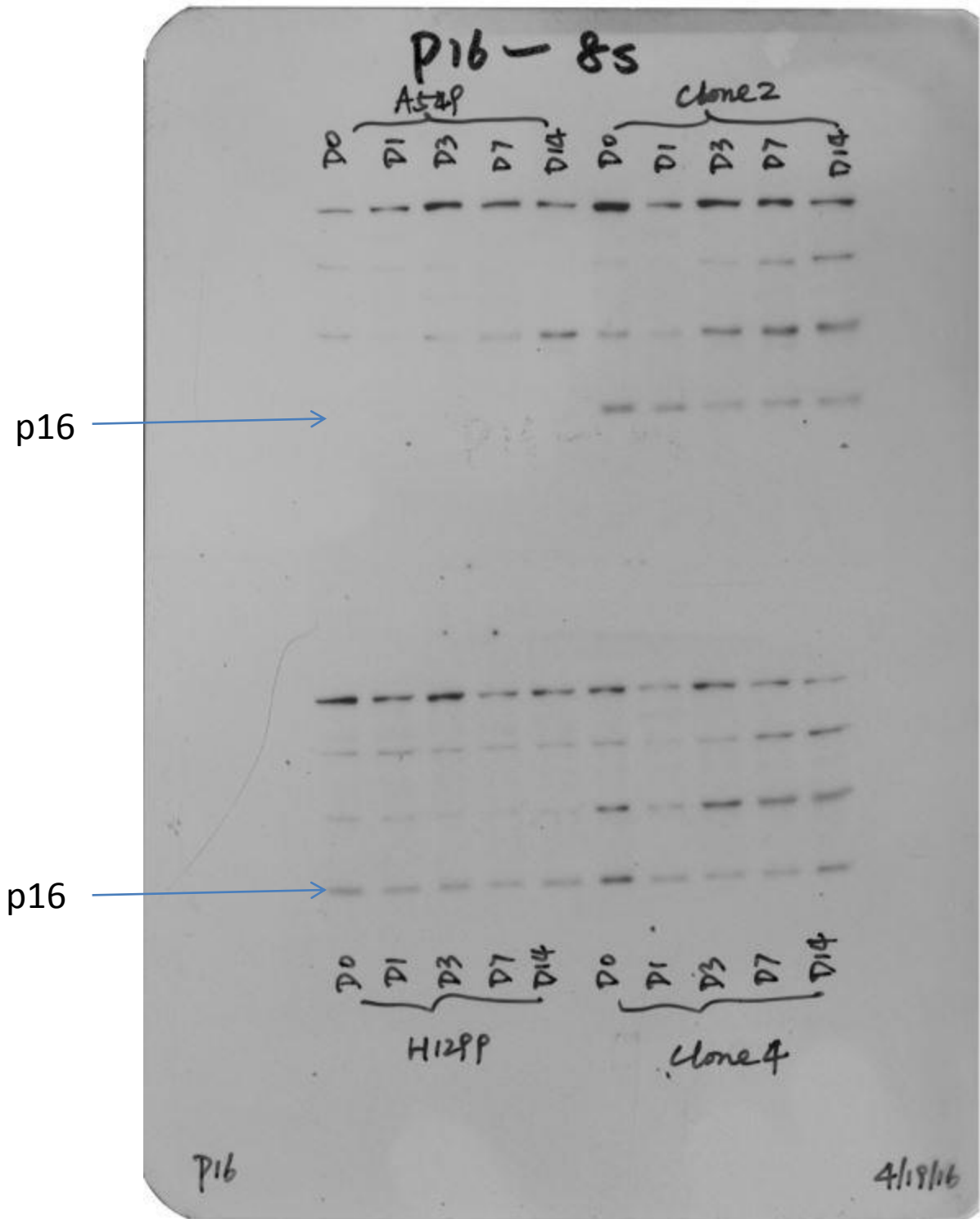


Figure 5A\_A549\_Clone2\_H1299\_Clone4\_p21

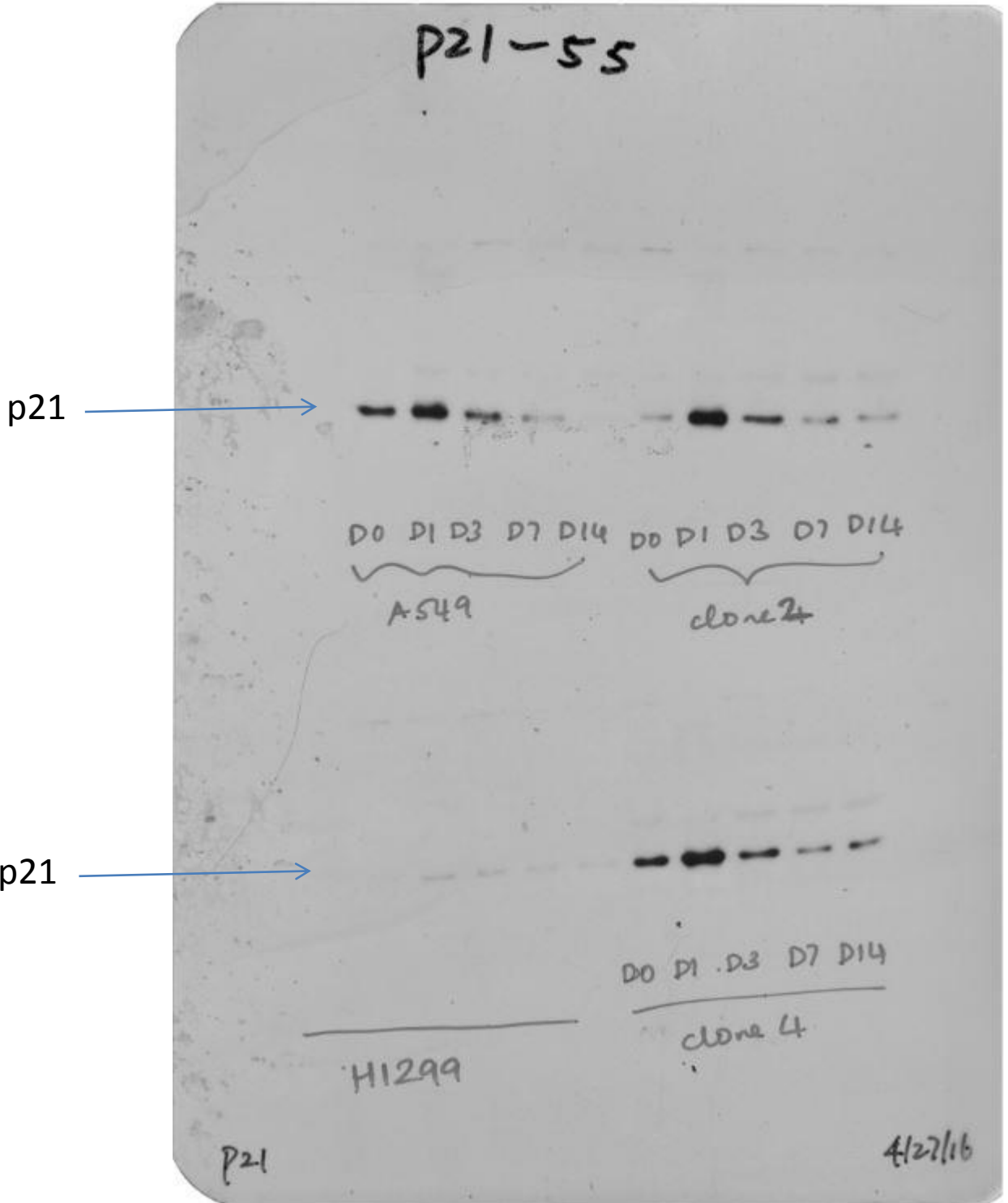


Figure 5A\_A549\_Clone2\_H1299\_Clone4\_p27

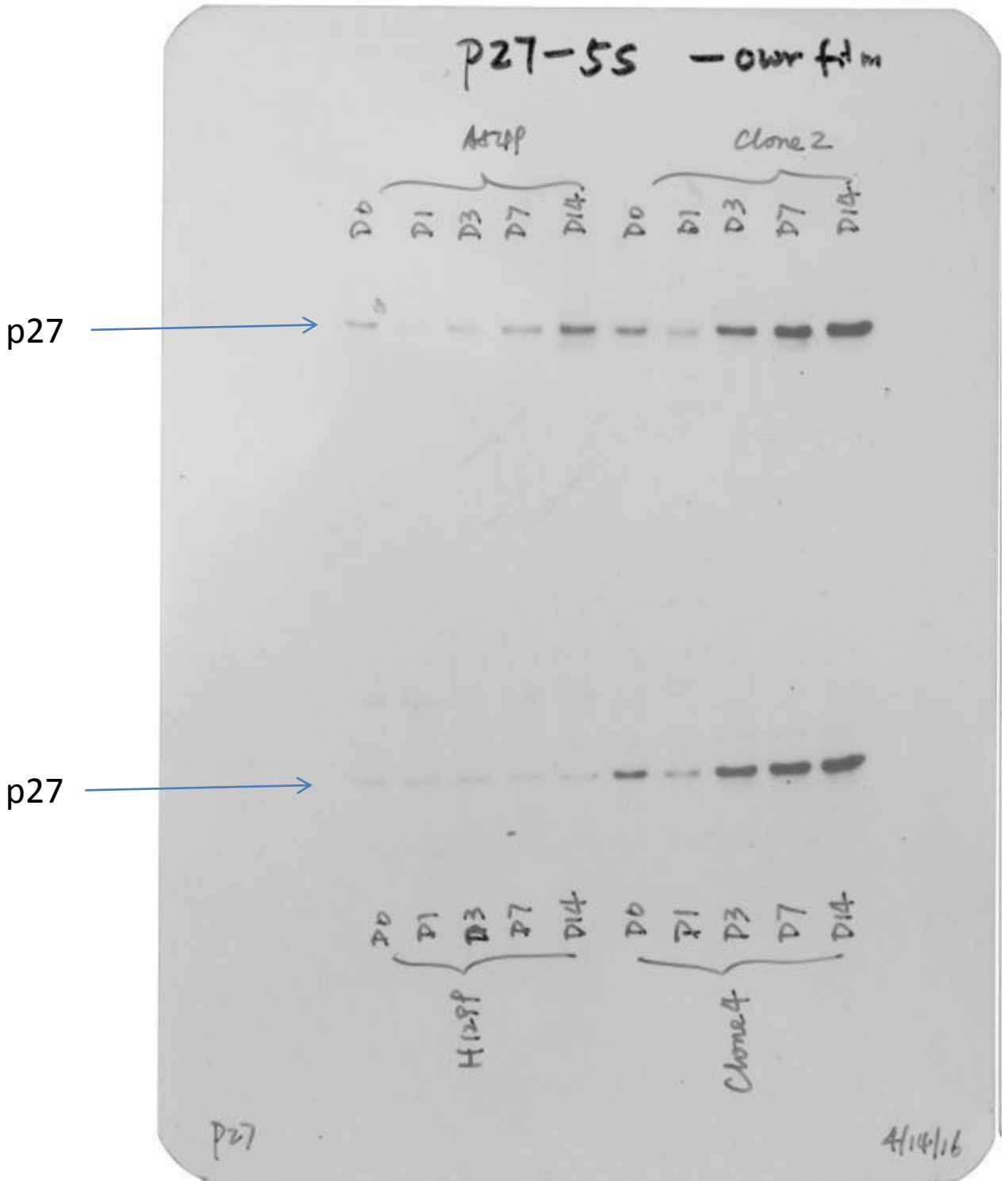


Figure 5A\_A549\_Clone2\_GAPDH

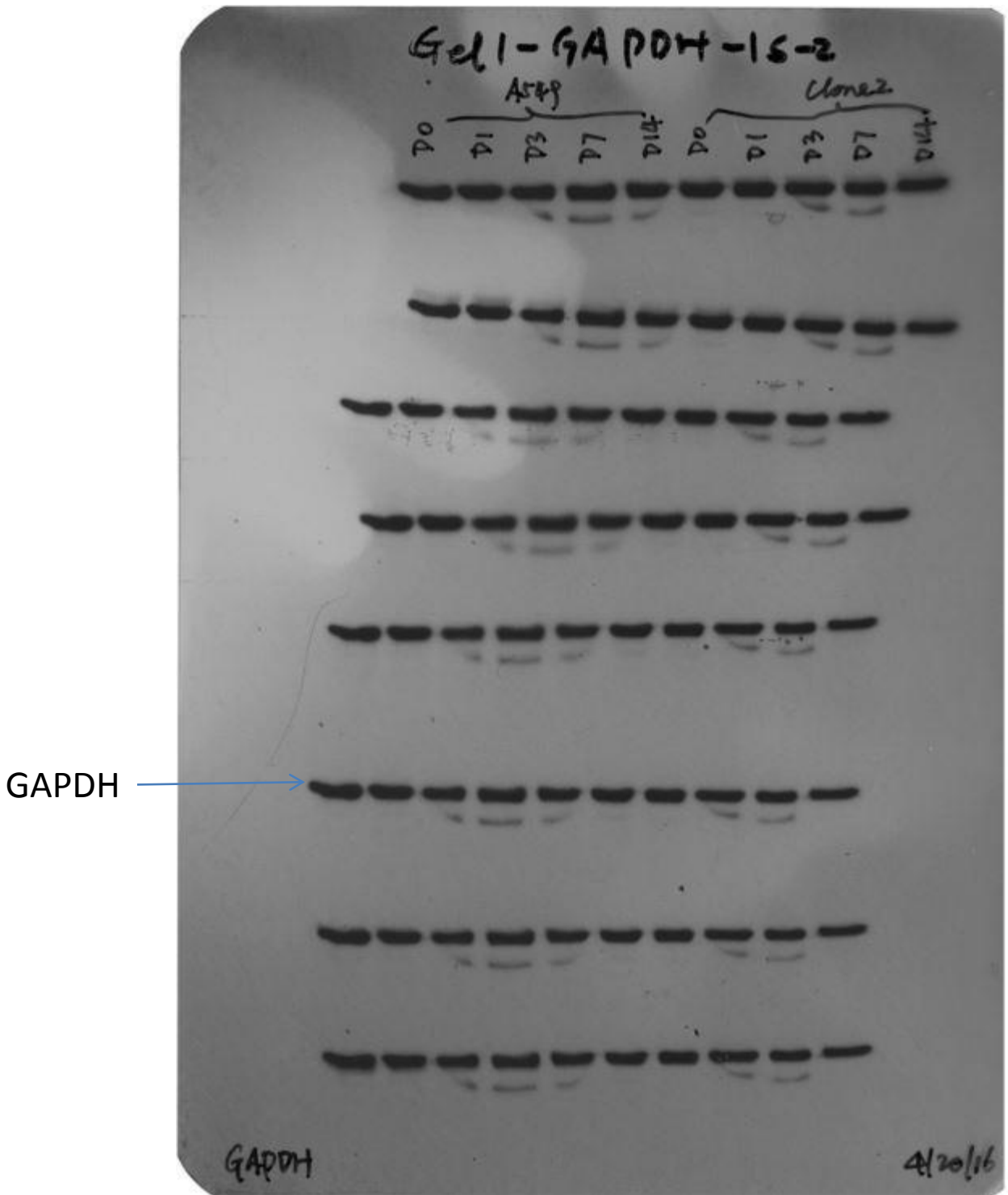




Figure 5A\_H1299\_Clone4\_GAPDH

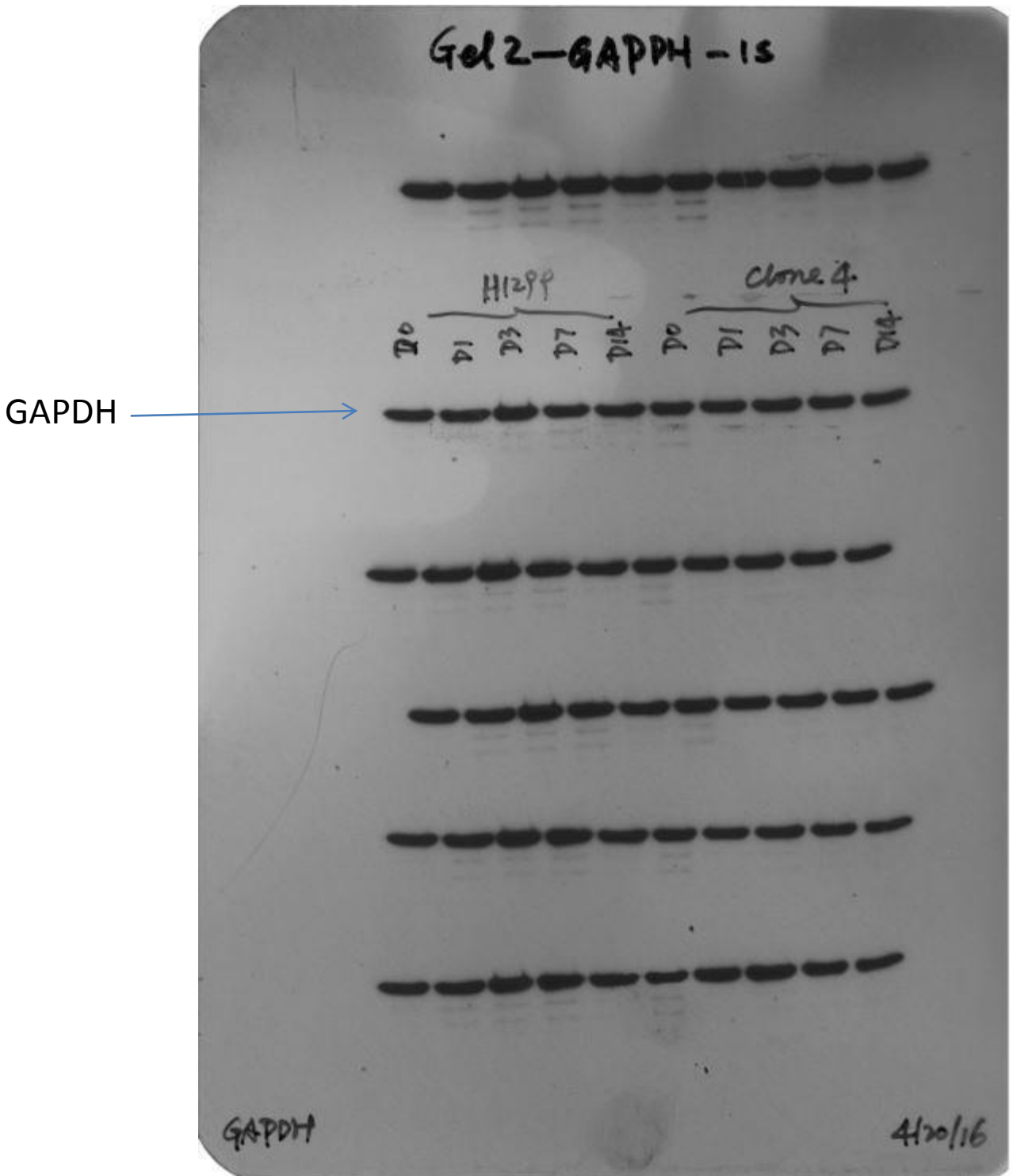


Figure 5A\_H292\_p21\_p16

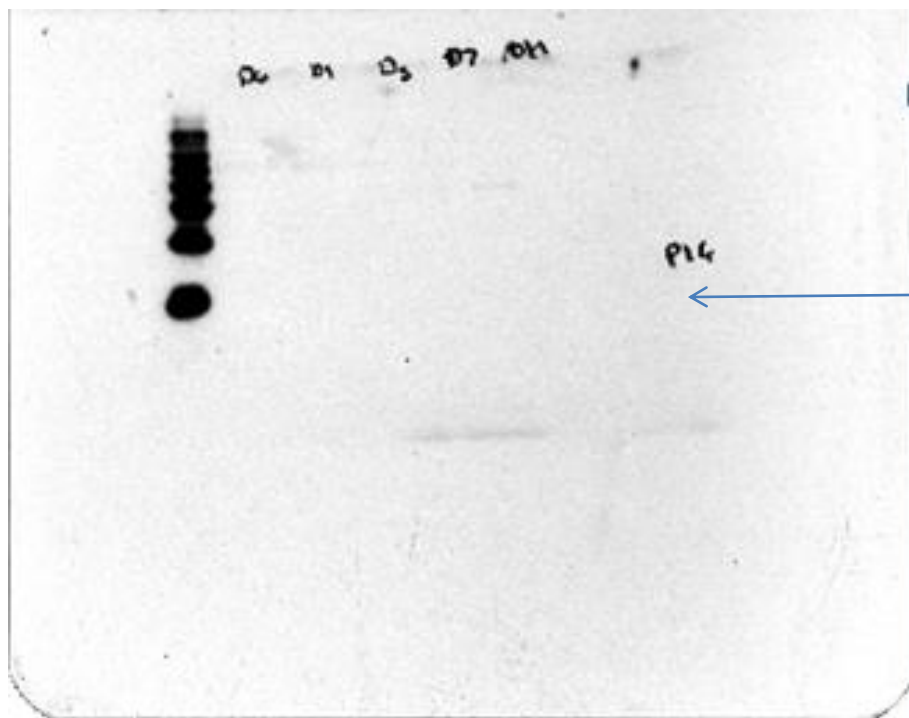
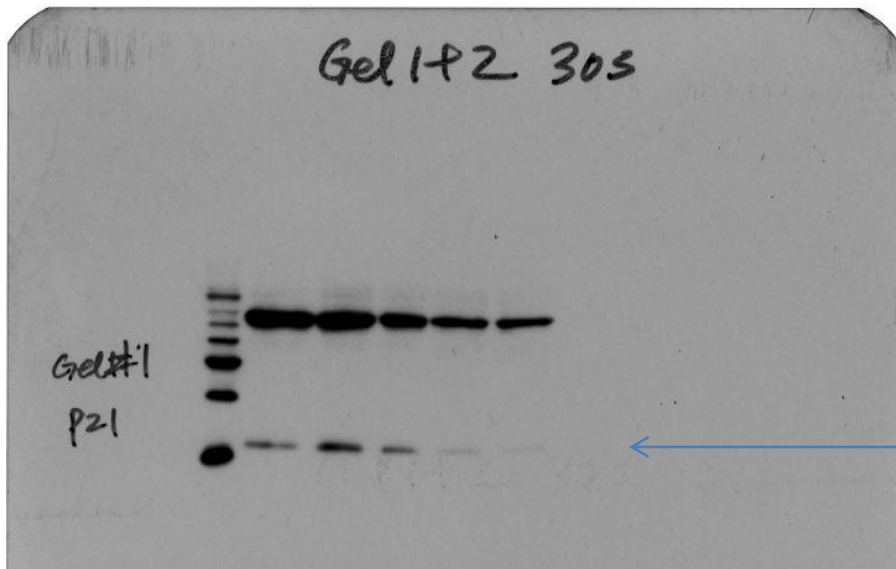


Figure 5A\_H292\_p27\_GAPDH

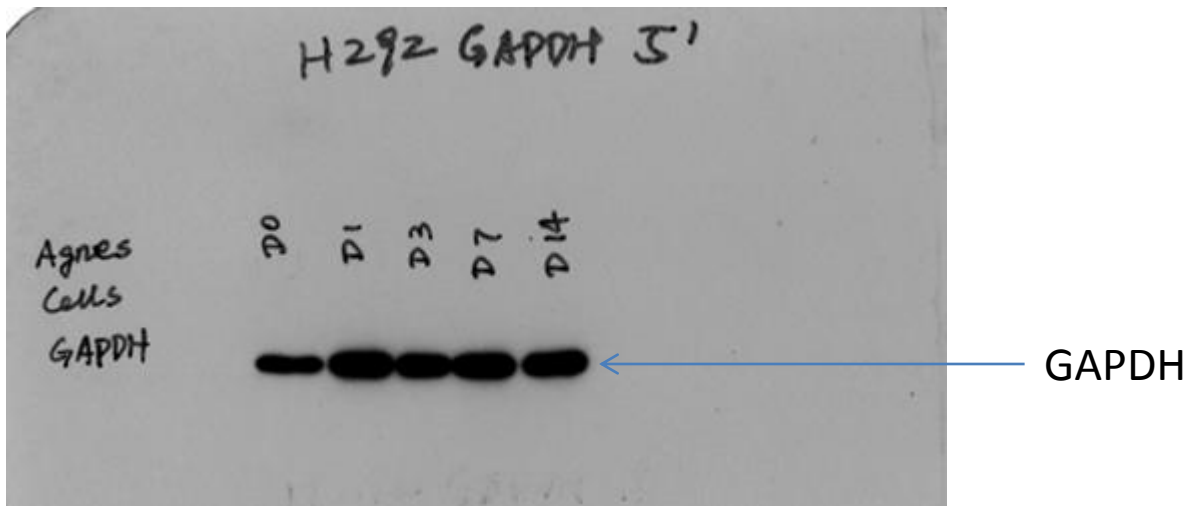
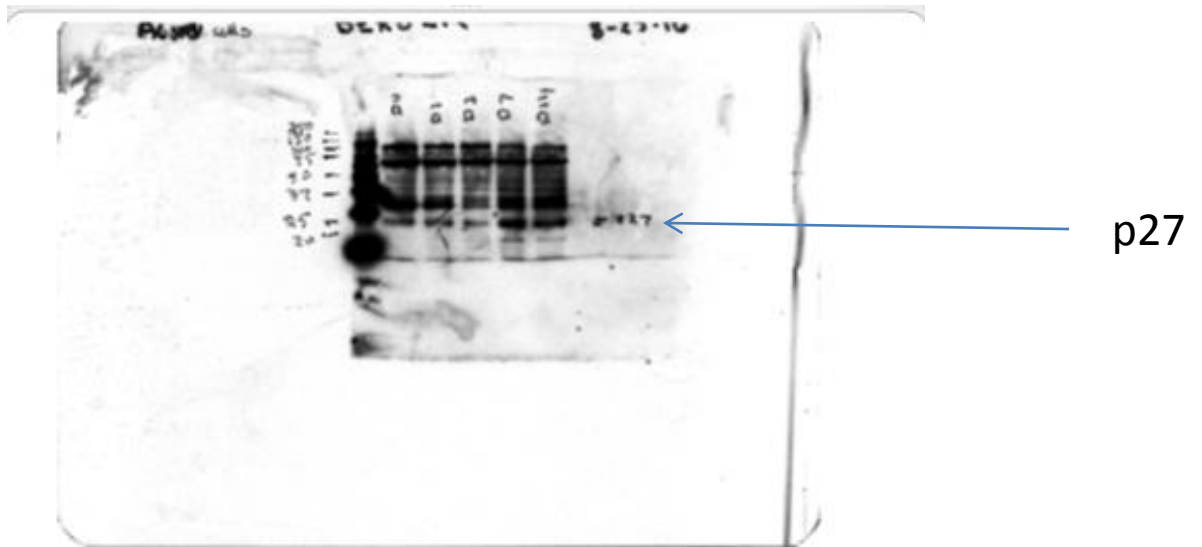


Figure 5B\_Clone4\_p21+p27

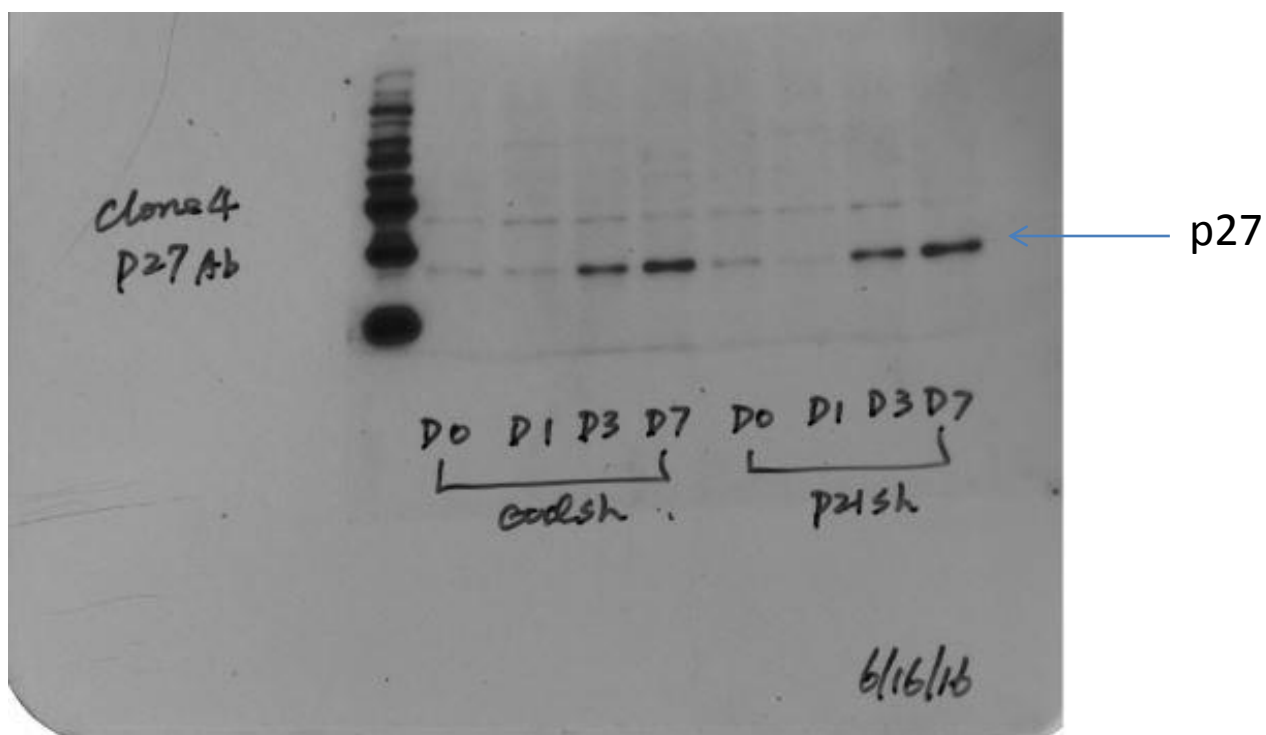
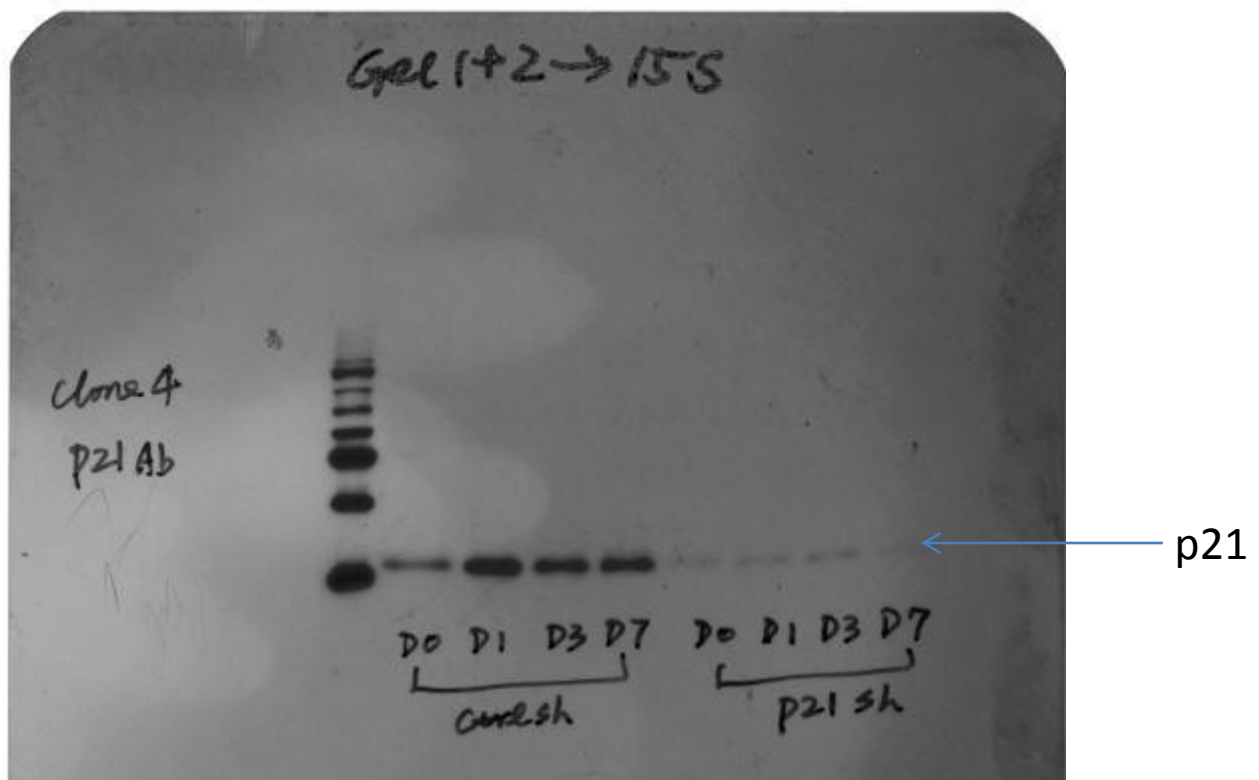


Figure 5B\_Clone4\_GAPDH

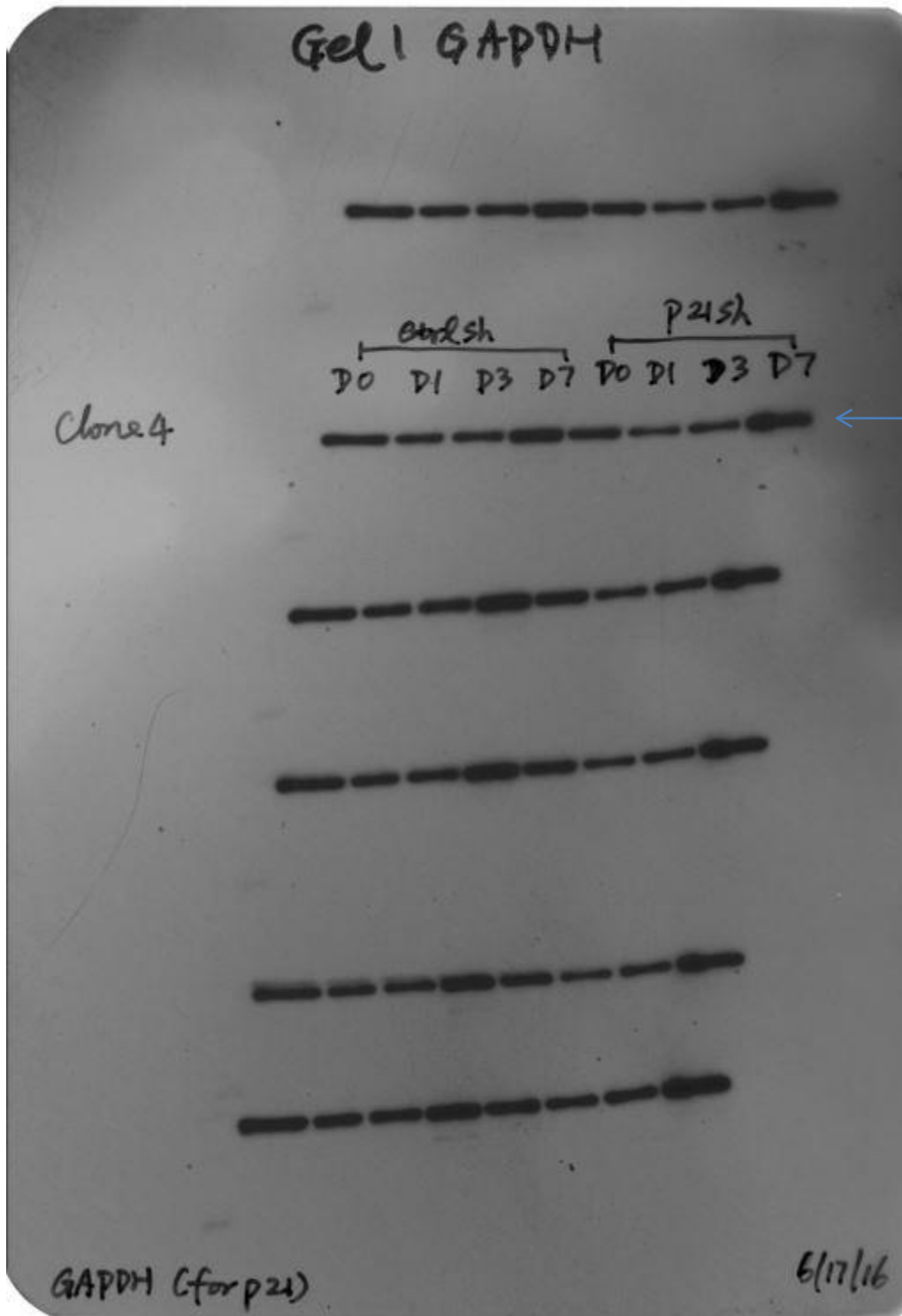


Figure 5D\_Clone4\_p27

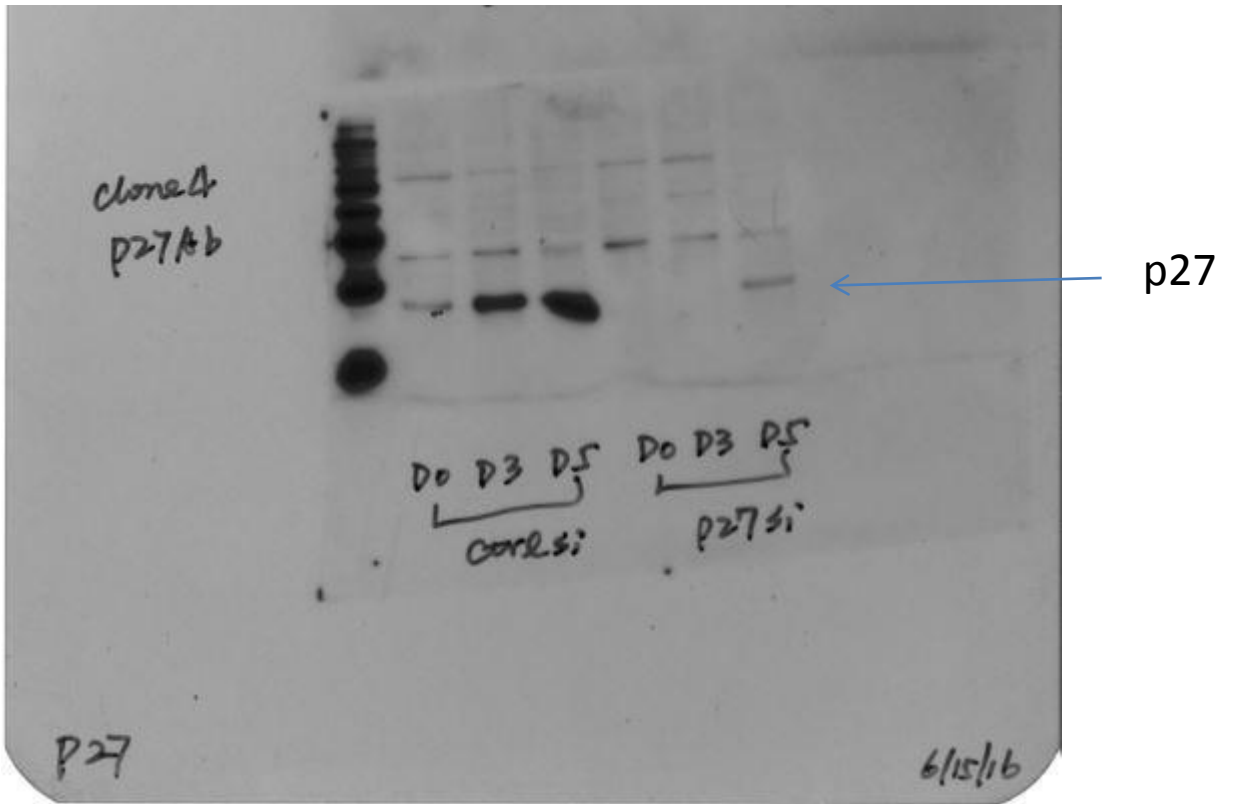


Figure 5D\_Clone4\_GAPDH

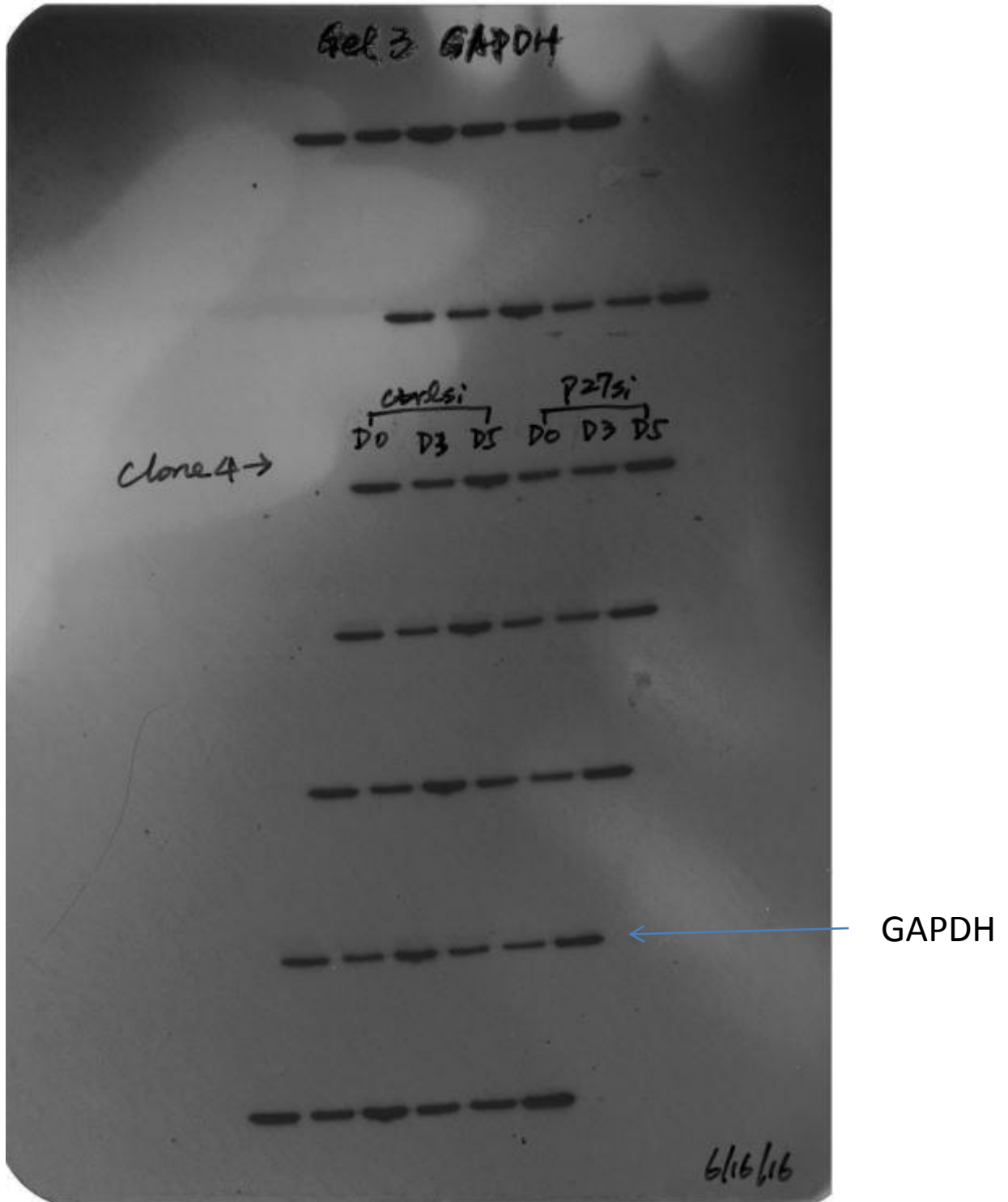


Figure 5G\_Clone4\_p27

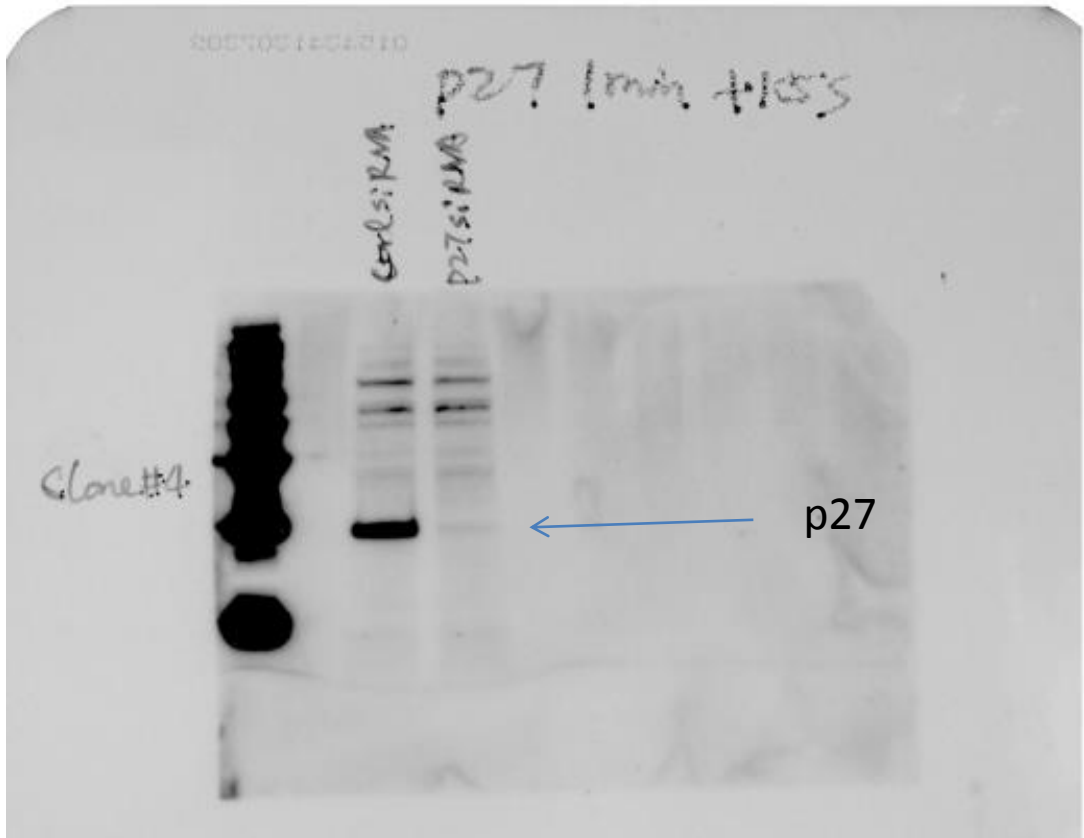




Figure 5G\_Clone4\_GAPDH

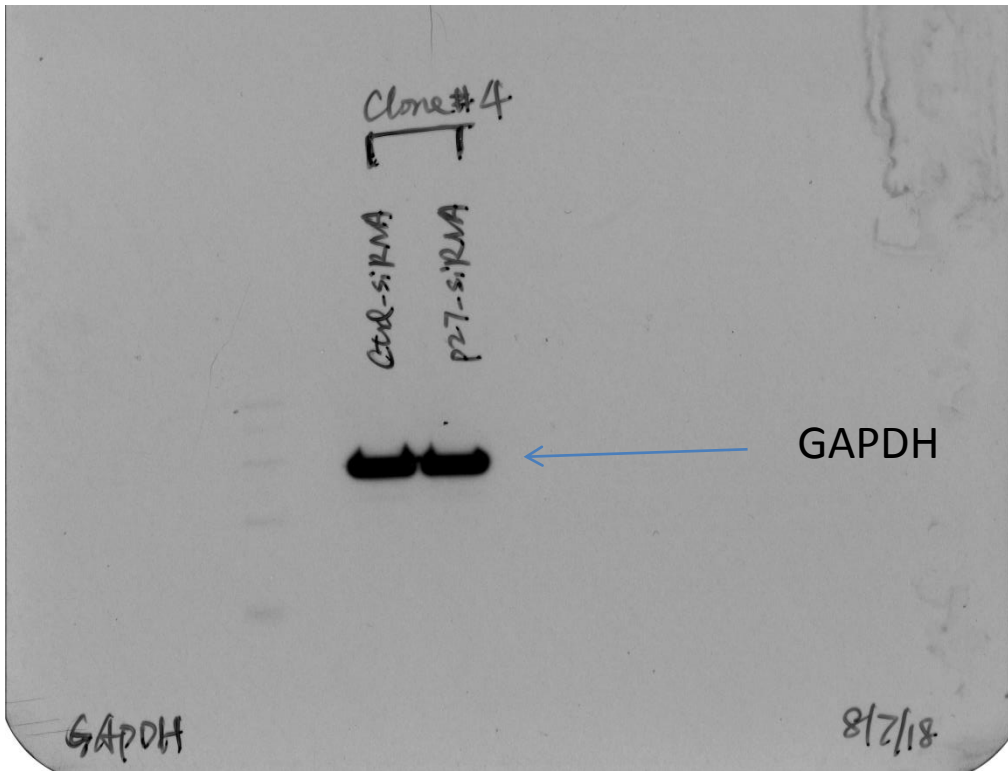


Figure 5H\_Clone4\_p27

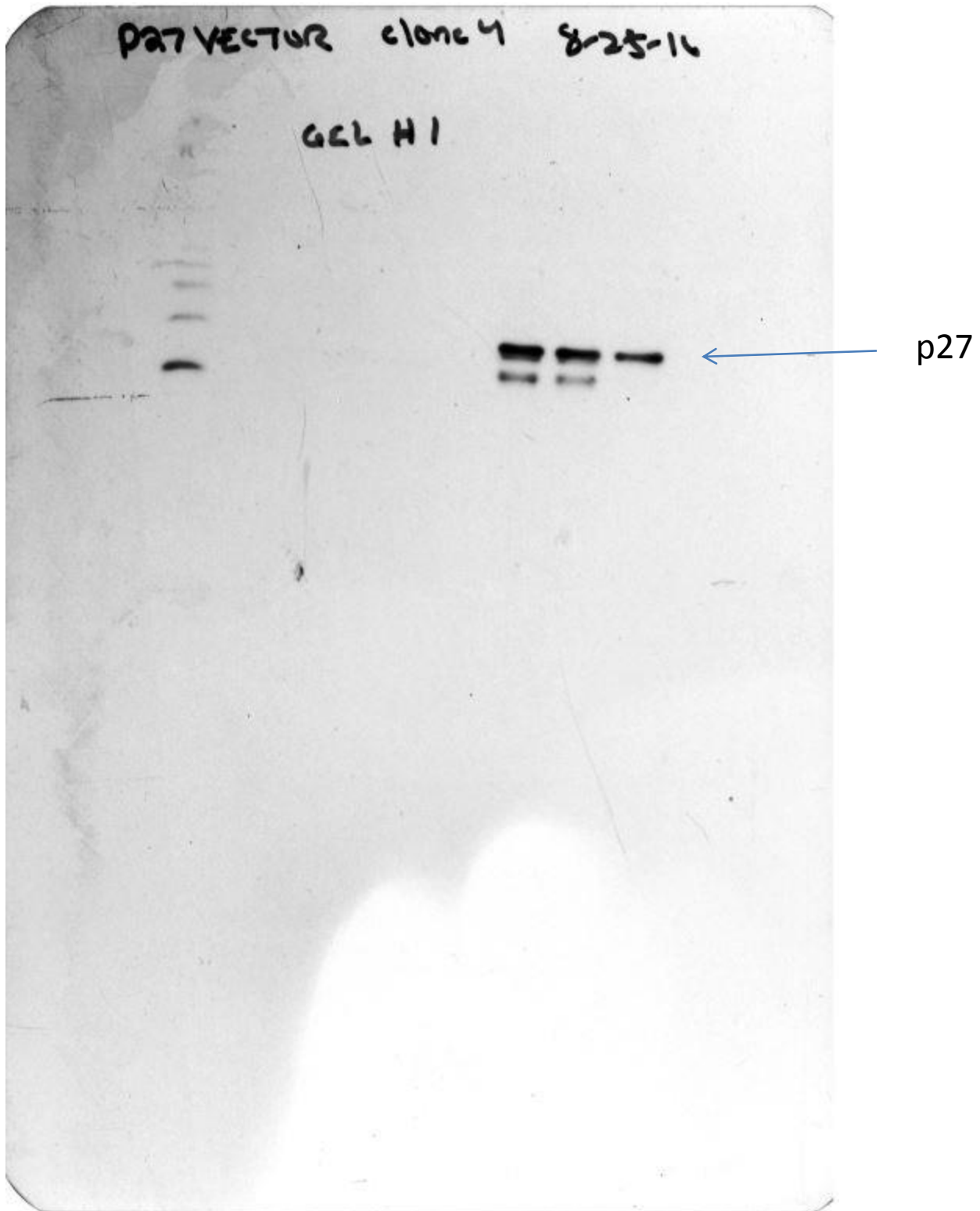


Figure 5H\_Clone4\_GAPDH

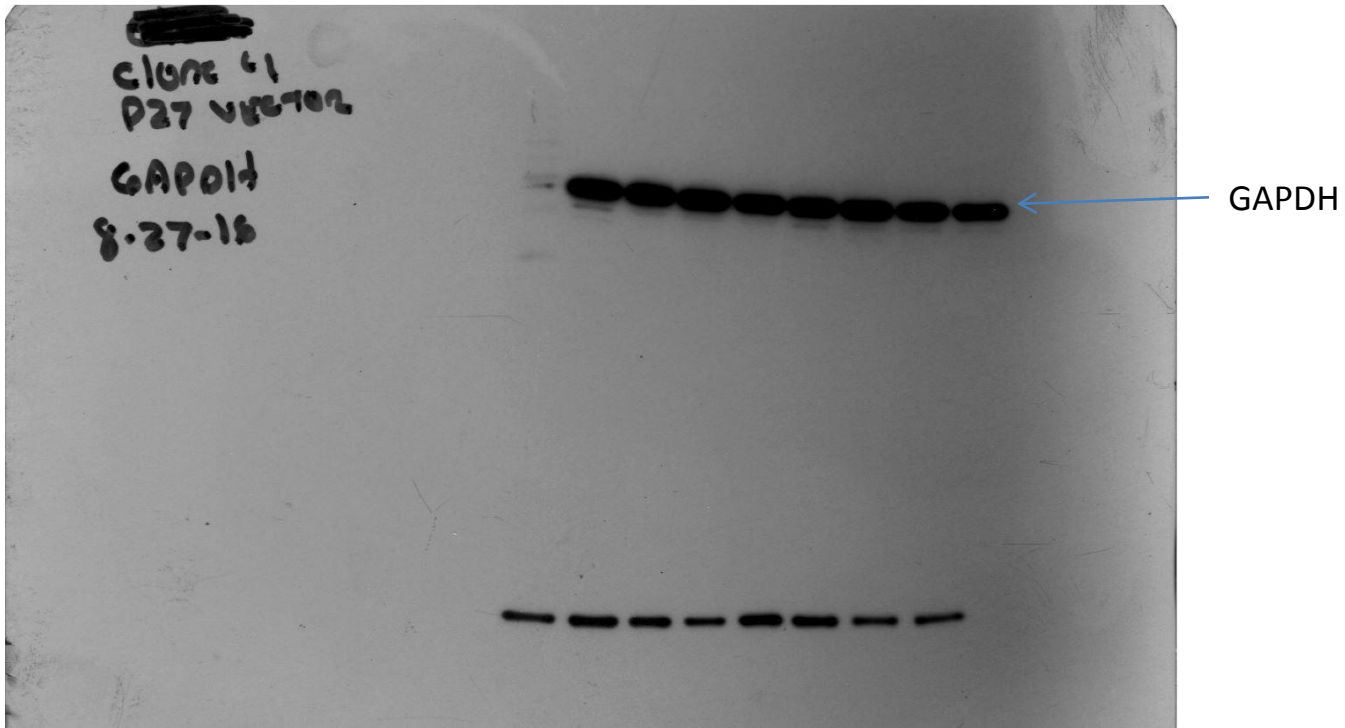


Figure 7A\_Clone4\_FOXO3\_FOXO4

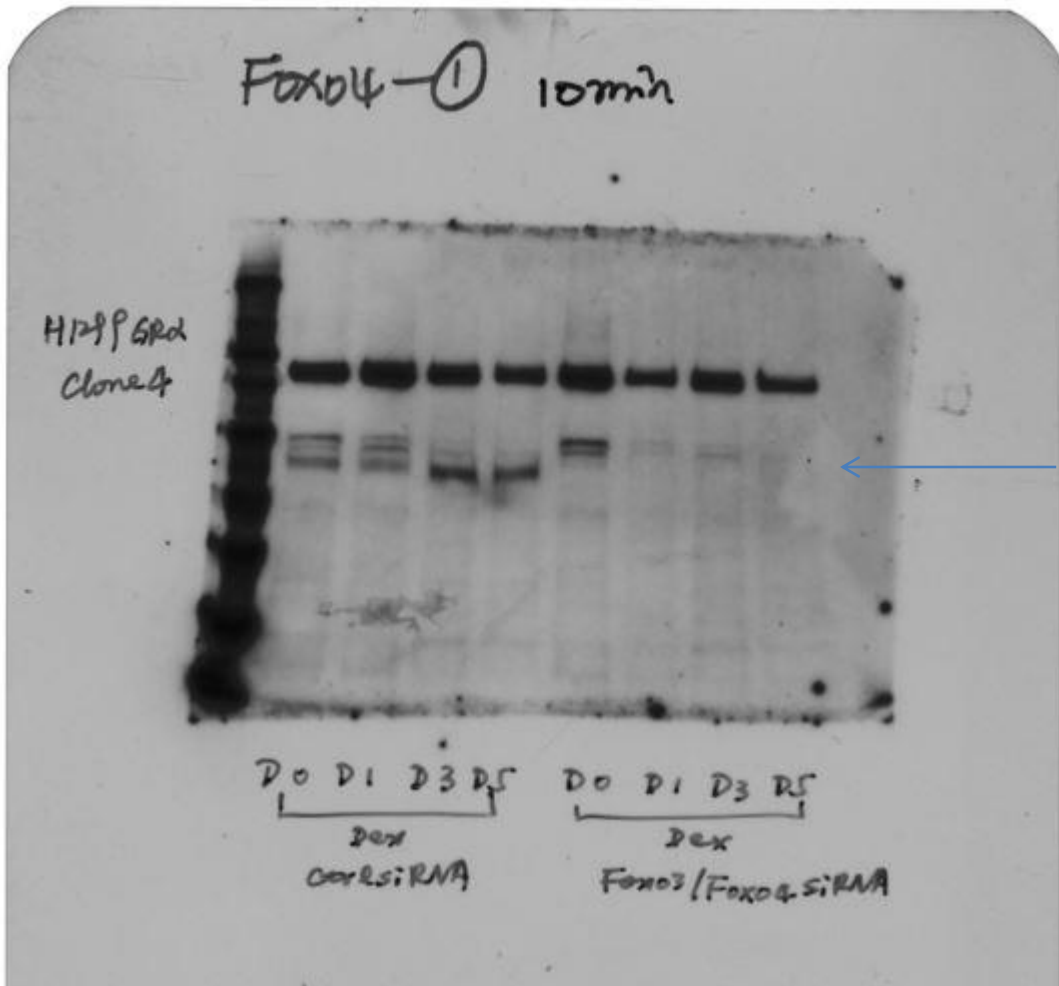
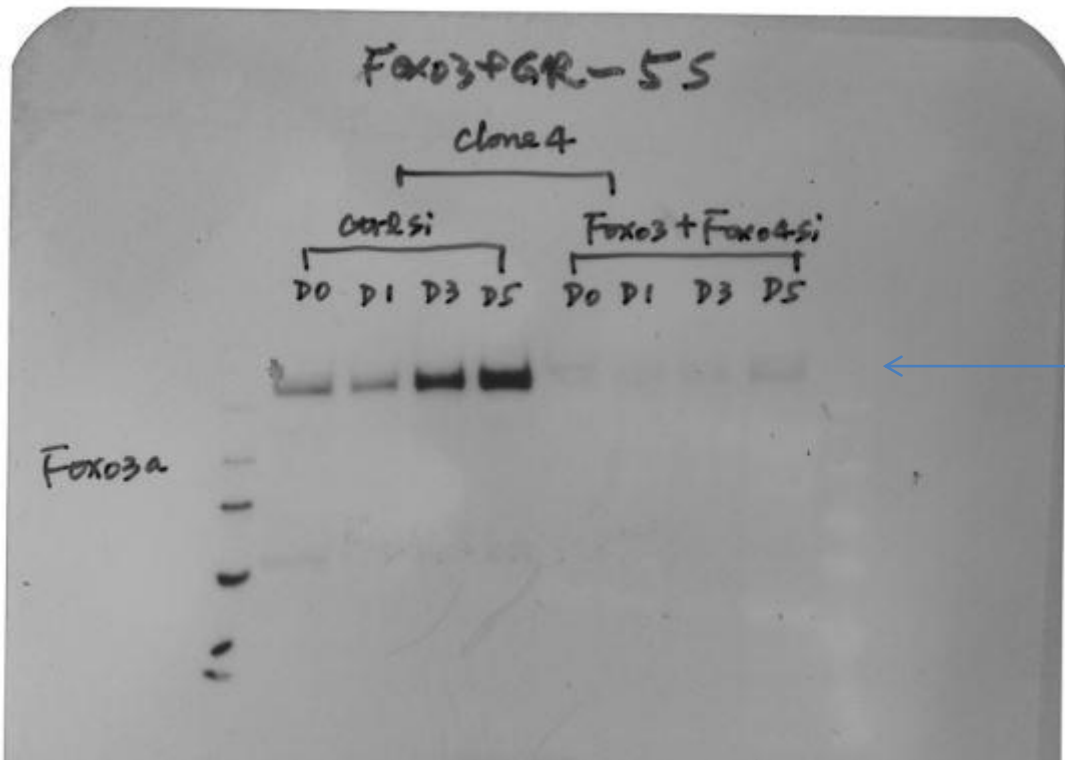


Figure 7A\_Clone4\_p27

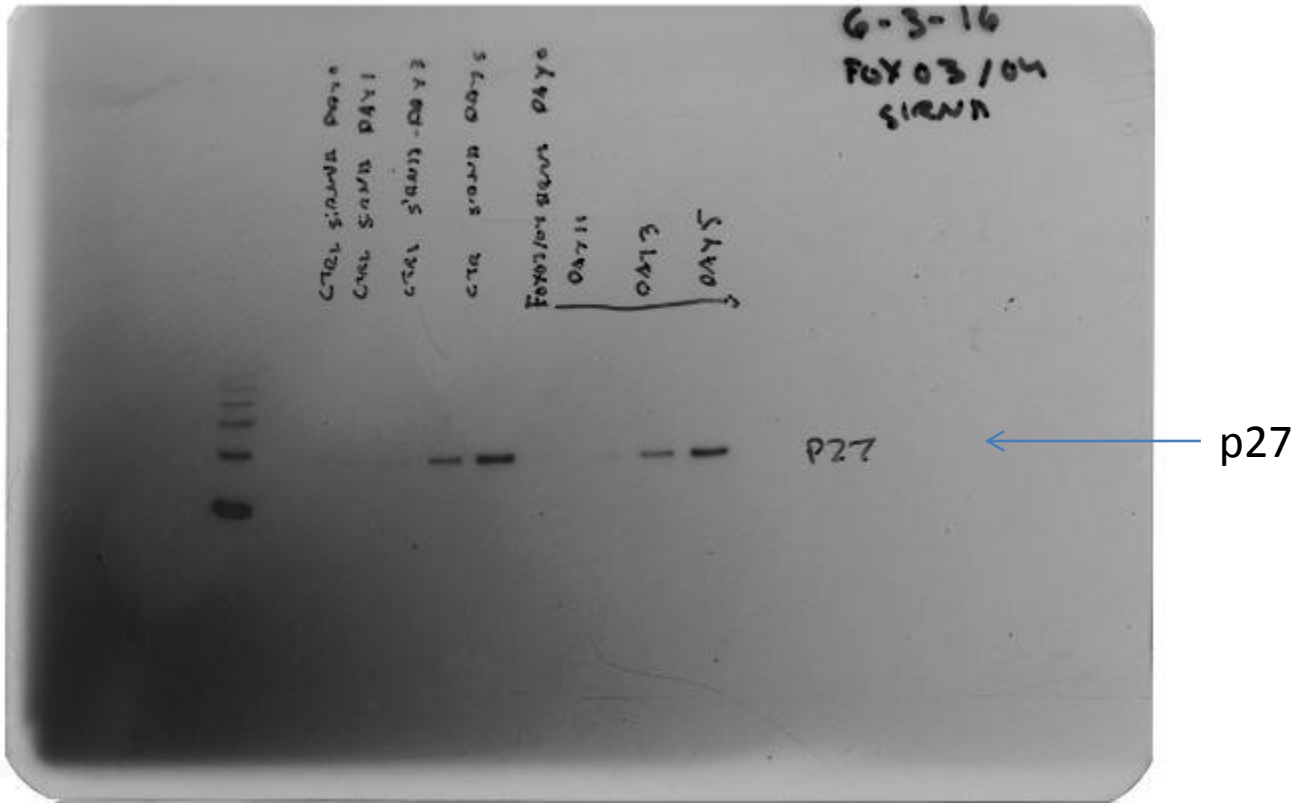


Figure 7A\_Clone4\_GAPDH

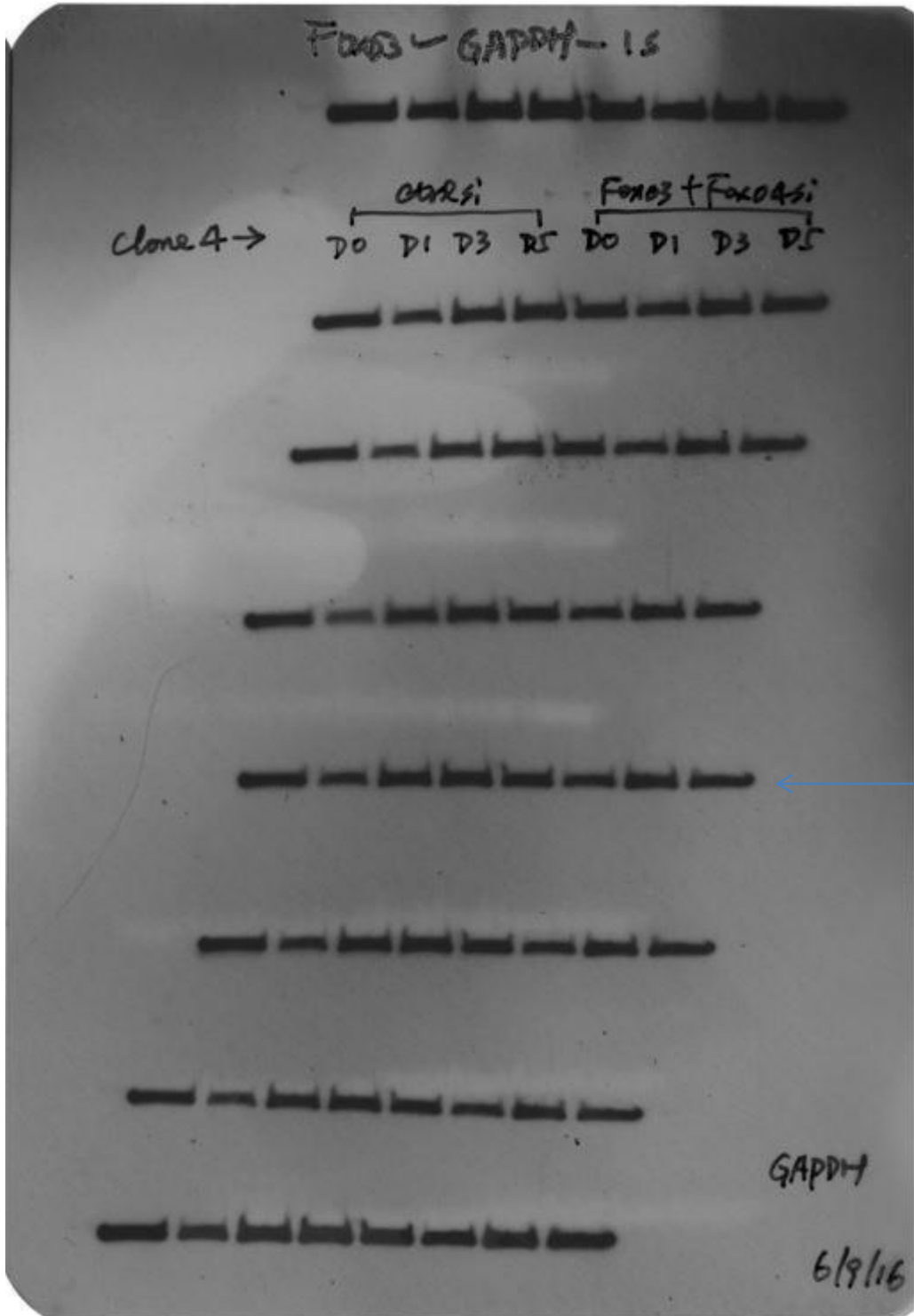


Figure 7D\_Clone4\_p21

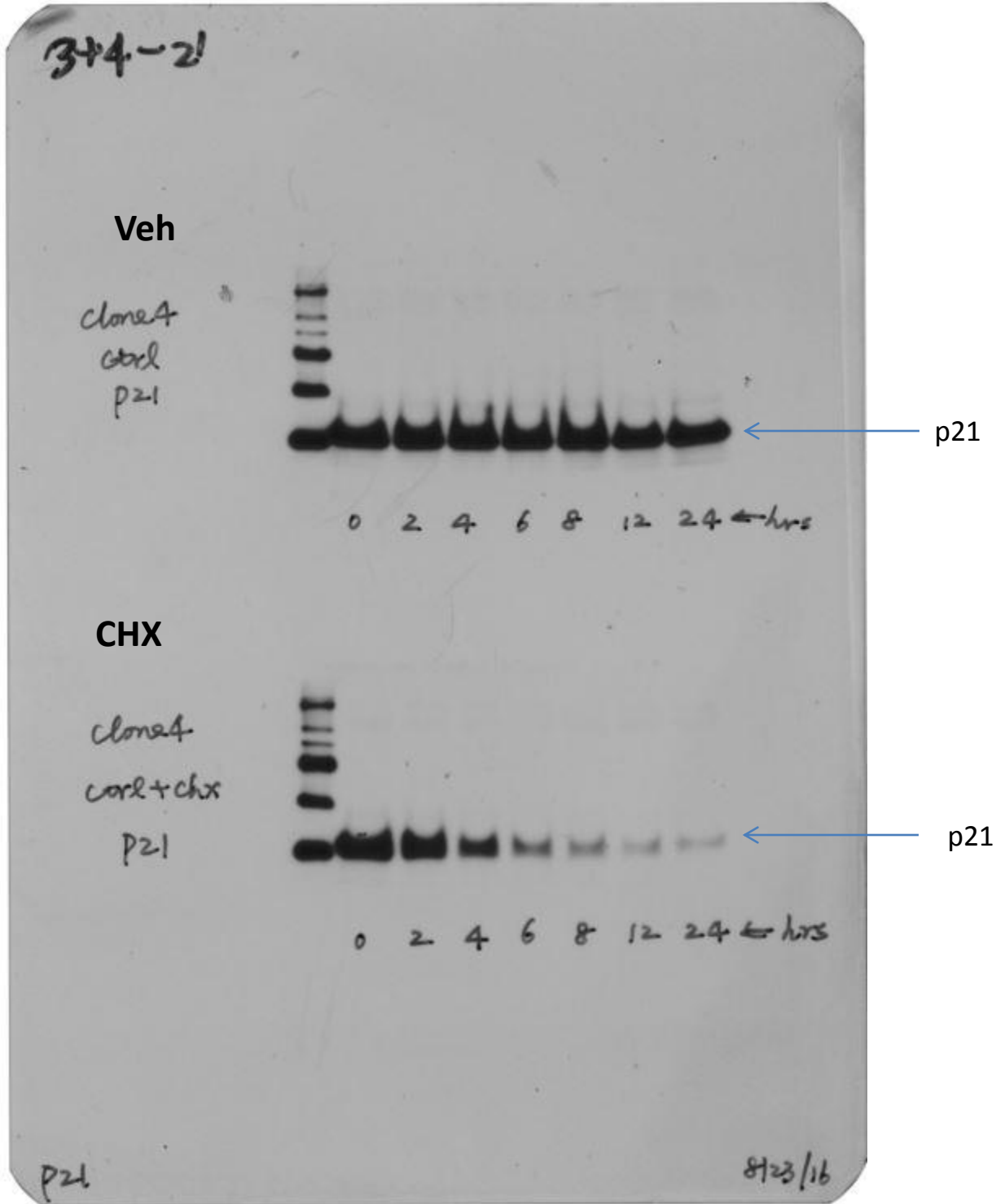


Figure 7E\_Clone4\_NoDex\_p27

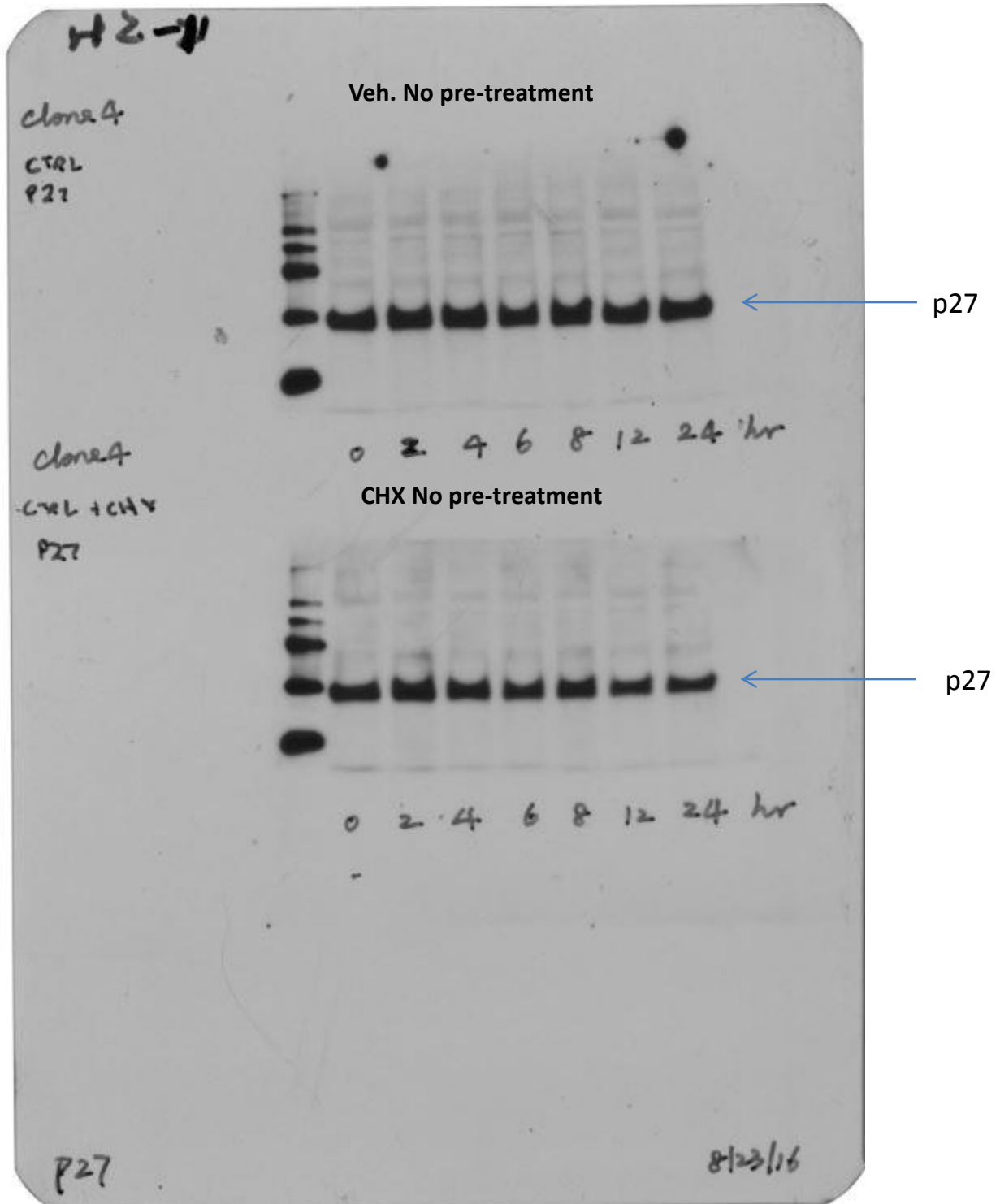




Figure 7E\_Clone4\_NoDex\_α-Tubulin

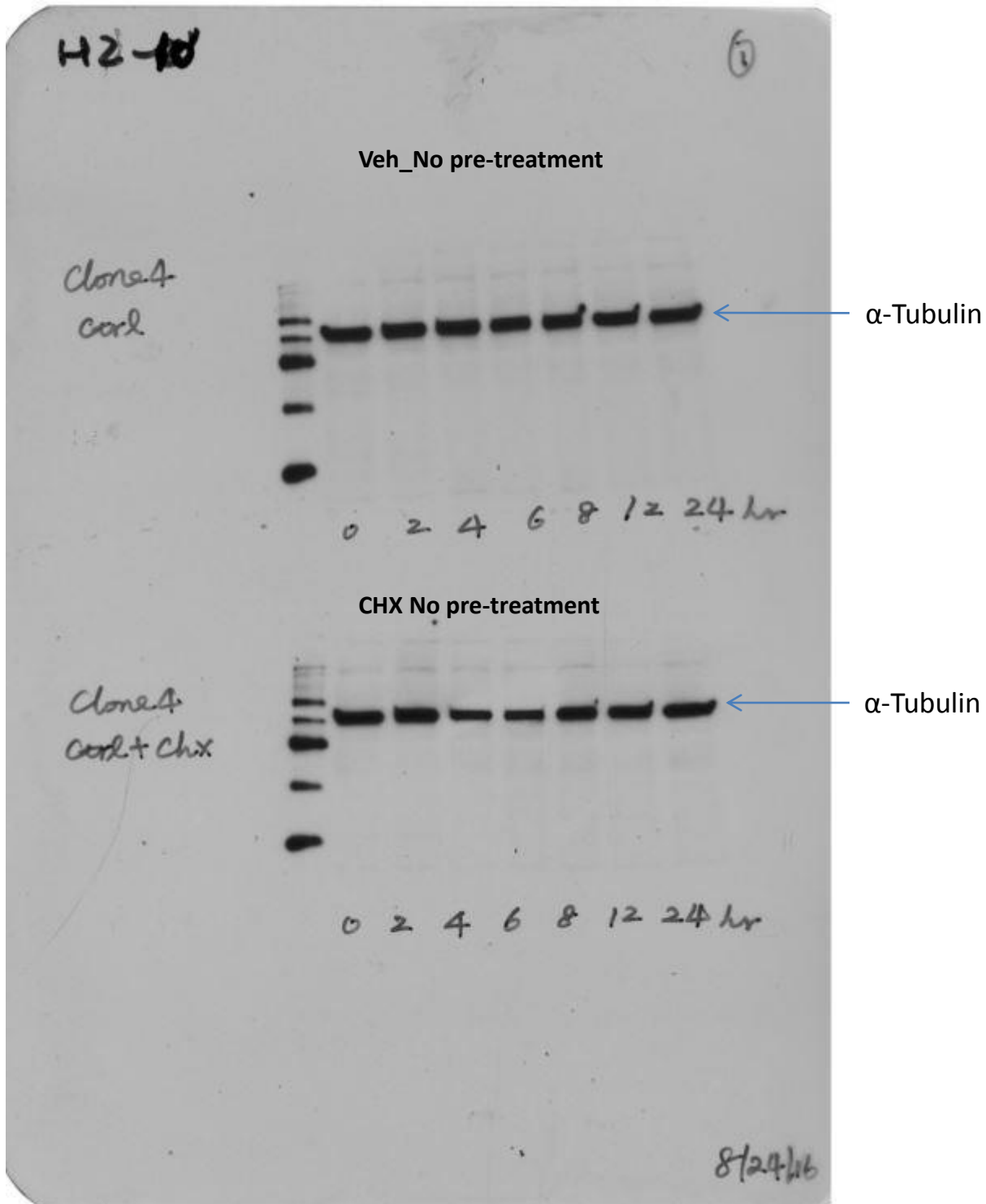


Figure 7E\_Clone4\_Dex\_p27

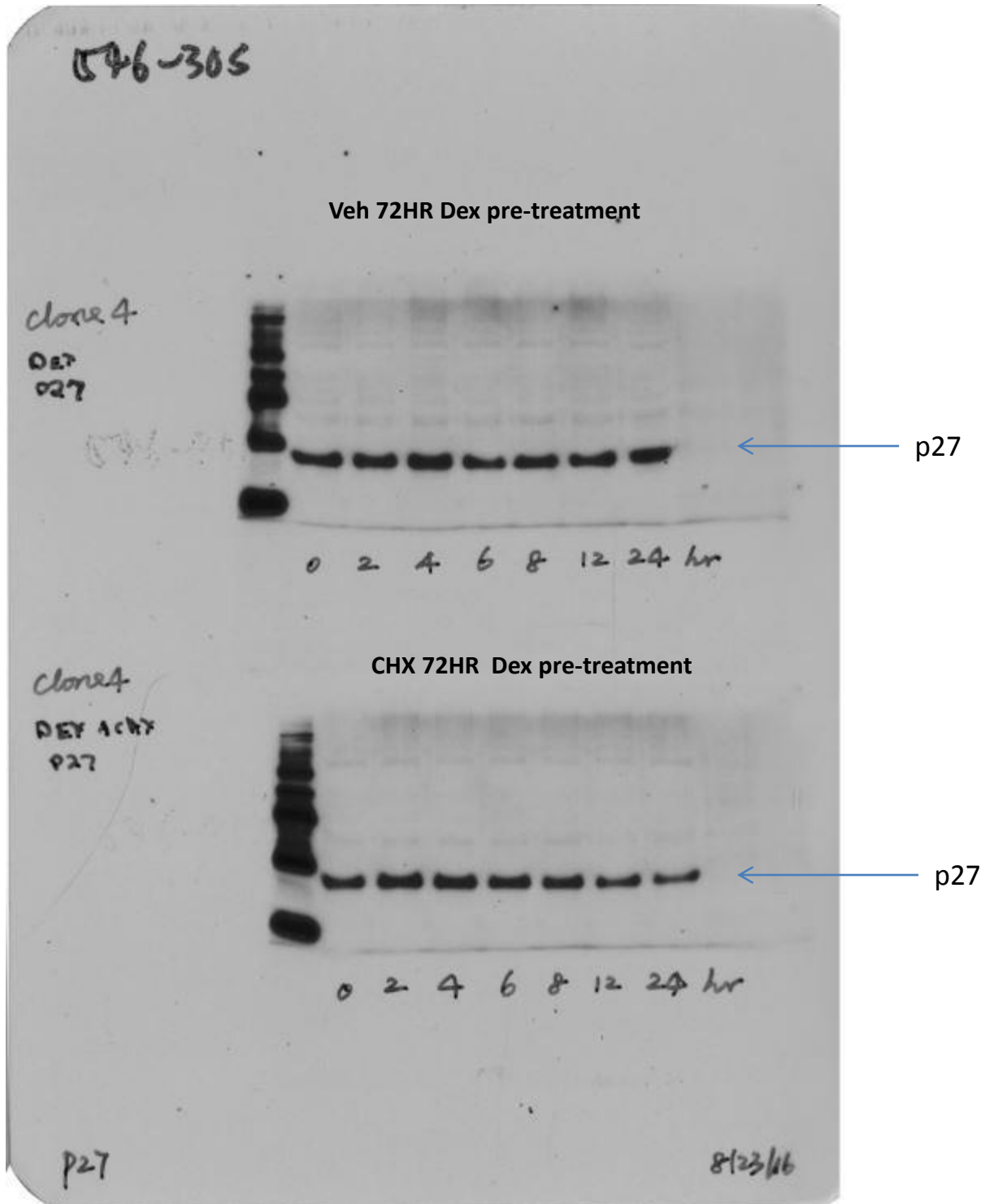


Figure 7E\_Clone4\_Dex\_  $\alpha$ -Tubulin

