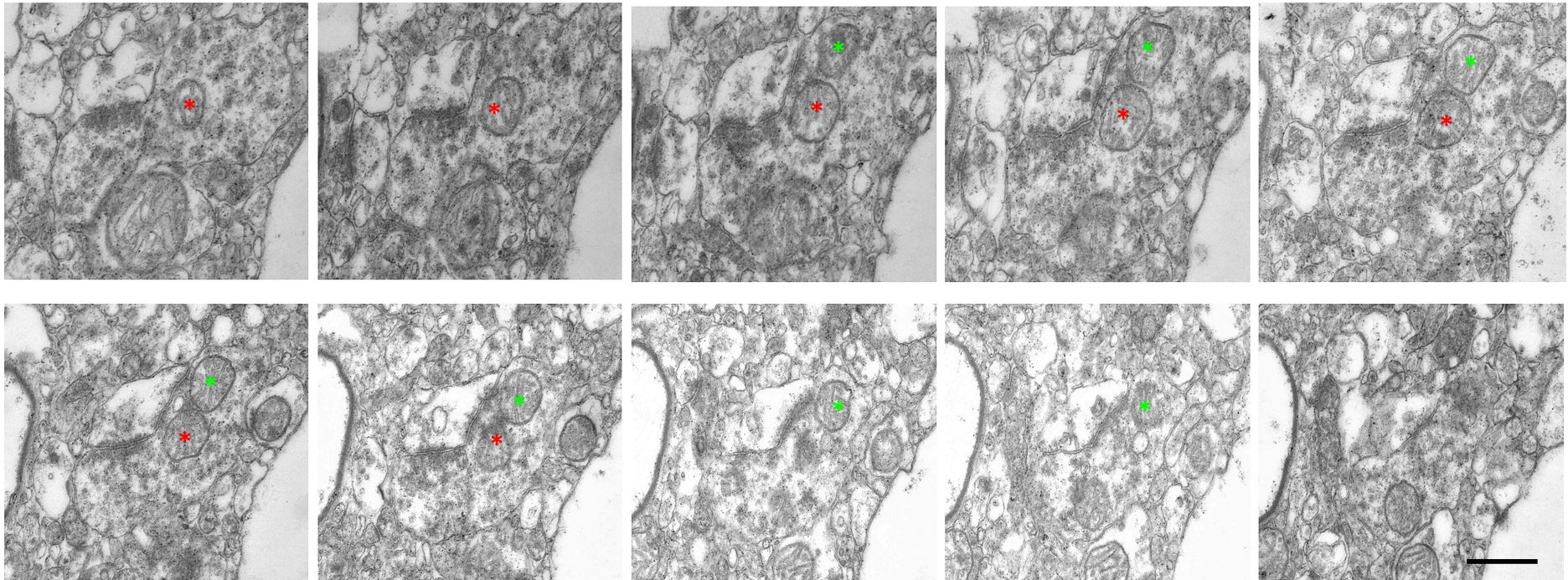


Region-specific depletion of synaptic mitochondria in the brains of patients with Alzheimer's disease *Acta Neuropathologica* 2018

Eleanor K. Pickett¹, Jamie Rose,¹ Caoimhe McCrory¹, Chris-Anne McKenzie², Declan King¹, Colin Smith², Thomas H Gillingwater¹, Christopher M. Henstridge¹, and Tara L. Spires-Jones^{1*}

Corresponding Author Email: Tara.Spires-Jones@ed.ac.uk



Online Resource 2: Multiple mitochondrial profiles confirmed to correspond to multiple mitochondria in 3D reconstructions. 10 serial 70nm sections show two complete mitochondria (labelled with asterisks) in a presynaptic terminal. Scale bar 500 nm.