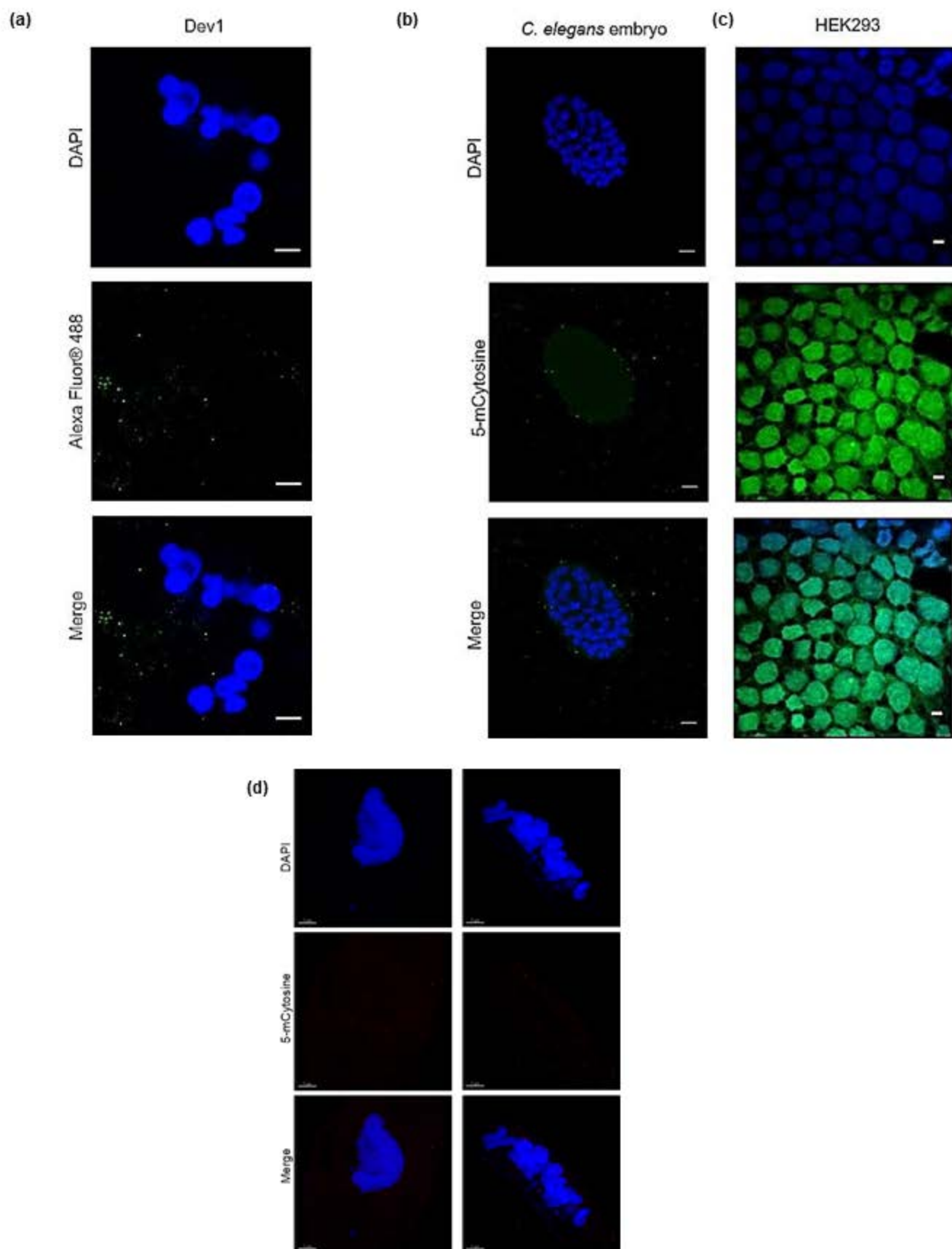


S1 Fig

S1 Fig. Immunofluorescence using; (a) only Alexa Fluor 488 secondary antibody on a population of *Paramecium* where majority of cells have fragmented parental macronucleus, (b, left panel) *C. elegans* embryo stained against 5-mCytosine as a negative control for immunofluorescence, (c, right panel) Human embryonic Kidney cells stained against 5-mCytosine (Abcam, ab73938) as a positive control for immunofluorescence, (d) immunofluorescence against 5-mCytosine (Diagenode, C15200081) during early and late stages of macronuclear development. Scale bar: 5µm for a, b and c, 7µm for d.