

**Supplementary Table 1.**

---

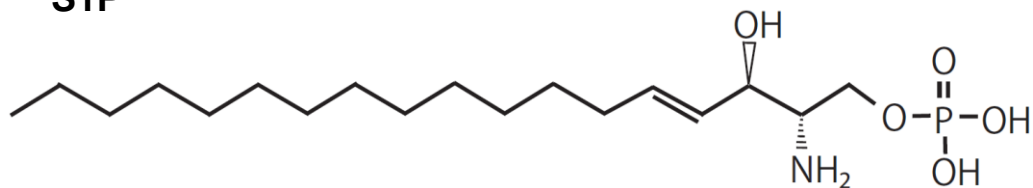
	S1P (nM)	DH-S1P (nM)	C <sub>17</sub> S1P (nM)	C <sub>17</sub> DH-S1P (nM)
Average	1027.6	411.8	1041.1	1023.9
SD	98.4	38.6	99.5	94.0
CV (%)	9.6	9.4	9.6	9.2

---

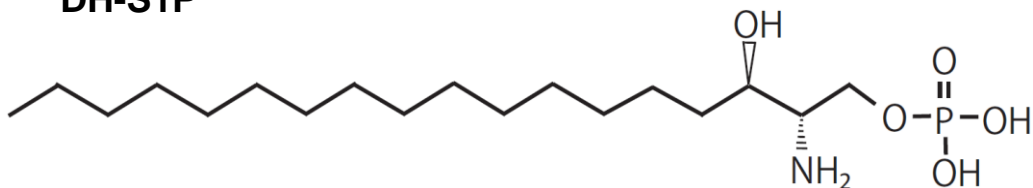
Validation of sphingolipid measurements using HPLC.

# Supplementary Figure 1

**A S1P**

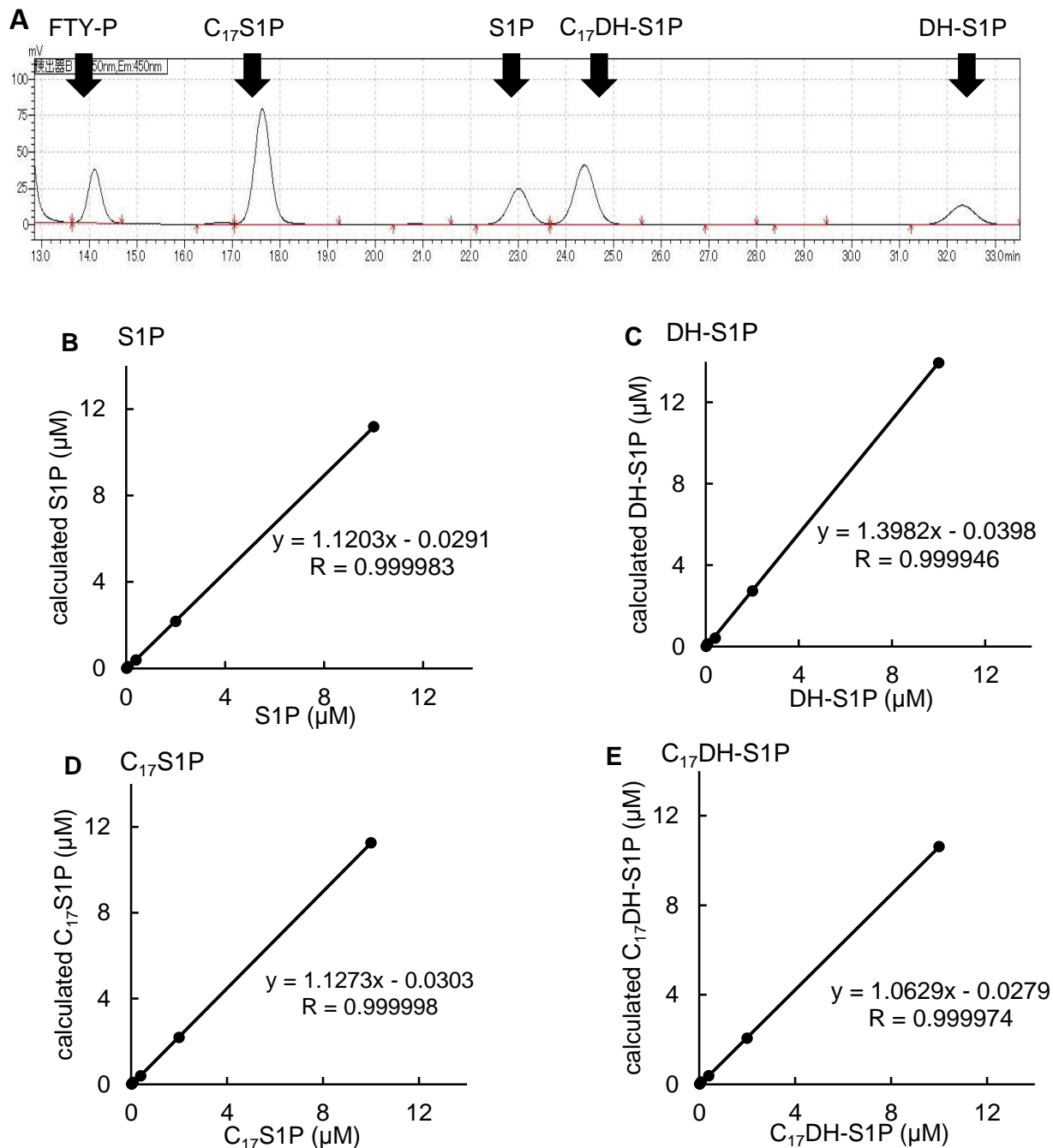


**B DH-S1P**



**Supplemental Figure 1. The structures of S1P and DH-S1P.**

## Supplementary Figure 2



**Supplementary Figure 2. Linearity of sphingolipid measurements.** (A) Representative chromatograms obtained using an HPLC method to measure sphingolipid levels. The linearity of (B) S1P, (C) DH-S1P, (D) C<sub>17</sub>S1P, and (E) C<sub>17</sub>DH-S1P was observed using 0.016 μM, 0.08 μM, 0.4 μM, 2.0 μM, and 10 μM standard samples (n = 4).