

Supplementary Material

Frequency of circulating CD4⁺Ki67⁺HLA-DR⁻ T regulatory cells prior to treatment for Multidrug Resistant tuberculosis can differentiate the severity of disease and predict Time to Culture Conversion.

Selena Ferrian¹⁺, Melinda Ross², Francesca Conradie³, Shaheed Vally Omar⁴, Nazir Ismail^{4,5}, Francesca Little², Gilla Kaplan⁶, Dorothy Fallows⁶, Clive M Gray^{1,7*}.

1. Institute of Infectious Disease and Molecular Medicine, Division of Immunology, Department of Pathology, University of Cape Town, South Africa
2. Department of Statistical Sciences, University of Cape Town, South Africa
3. Faculty of Health Sciences, University of the Witwatersrand, Johannesburg, South Africa
4. Centre for Tuberculosis, National Institute of Communicable Diseases, Sandringham, Johannesburg, South Africa 2131
5. University of Pretoria, Department of Medical Microbiology, Pretoria, South Africa
6. Public Health Research Institute, Rutgers University, Newark, NJ, United States
7. National Health Laboratory Services, Cape Town, South Africa

+ Current address: Department of Pathology, Stanford University, Palo Alto, California, USA

- Correspondence: Clive M Gray, Institute of Infectious Disease and Molecular Medicine, Division of Immunology, Department of Pathology, University of Cape Town, South Africa; clive.gray@uct.ac.za

Keywords: Treg cells, Mycobacteria tuberculosis, Multi-drug resistant tuberculosis, lung cavities, sputum culture, smear grades, culture conversion.

Supplementary Figure 1: (A, B) Representation of the flow cytometry gating strategy showing area versus height forward scatter (FSC) to gate singlets and then gate around lymphocytes. The time gate was used to identify smooth flow of cells and red polygons and boxes represent gates used to select populations of cells to be characterized further. TD: terminal differentiation; LD: late differentiation; ED: early differentiation. (C) Representation of the gating strategy used to identify IL-2 and IFN γ expression in CD69⁺ Treg. Light and boldened blue boxes represent CD69 negative and positive, respectively.

Supplementary Figure 2: (A) List of antibodies, fluorescent dyes, clones, isotypes and vendors used to make up the polychromatic panel. Areas shaded according to whether antibodies were used for surface or intracellular staining. (B) Fluorescence minus one (FMO) for Ki67 in CD3⁺CD4⁺ T cells.

Supplementary Figure 3: A mosaic plot showing the comparison between baseline cavitation and sputum smear Acid Fast Bacilli (AFB) grades, with green depicting absence of cavitation and purple depicting presence of cavitation, within slow and rapid responders to MDR-TB treatment (n=42). The Fisher's exact test was used for statistical correlation

between microbiological outcome and smear grades or cavitation. Cavitory lesions were present in 28 (74%) of the patients with available chest X-ray reviews.

0= Absence of AFB; 1= scanty; 2= AFB+; 3=AFB++; 4+AFB+++

NA= Not available

Supplementary Figure 4:

Correlation between Ki67⁺HLA-DR⁻ Treg cells and Log₁₀ time to culture conversion (TCC) without stimulus in culture (NS) and after PHA stimulation. Black symbols represent rapid responders and red symbols represent slow responders. MITO = mitogen (PHA).

Supplementary Figure 5: Comparison of Treg cells between SC negative (light shaded circles) and SC positive (dark solid circles) patients under each stimulation condition. NS = no stimulus; Mtb = mycobacterium tuberculosis; PPD = purified protein derivative; MITO = mitogen (PHA). The horizontal line represents the median values ± interquartile ranges (IQR). Statistical comparisons between responding patients were made using the Mann-Whitney U test. Statistical comparisons within the same group of patients over time were made using Wilcoxon matched-pairs test.

Supplementary Figure 6: Comparison of Mtb-stimulated Ki67⁻HLA-DR⁻ double negative Treg cell frequencies between SC negative (light shaded circles) and SC positive (dark solid circles). The horizontal line represents the median values ± interquartile ranges (IQR). Statistical comparisons between responding patients were made using the Mann-Whitney U test. Mtb = mycobacterium tuberculosis.

Supplementary Figure 7: Comparison of Mtb-stimulated Ki67-HLA-DR- double negative Treg cell frequencies between slow responders (<71 days) and rapid responders (>71 days). The horizontal line represents the median values \pm interquartile ranges (IQR). Statistical comparisons between responding patients were made using the Mann-Whitney U test. Mtb = Mycobacterium tuberculosis.

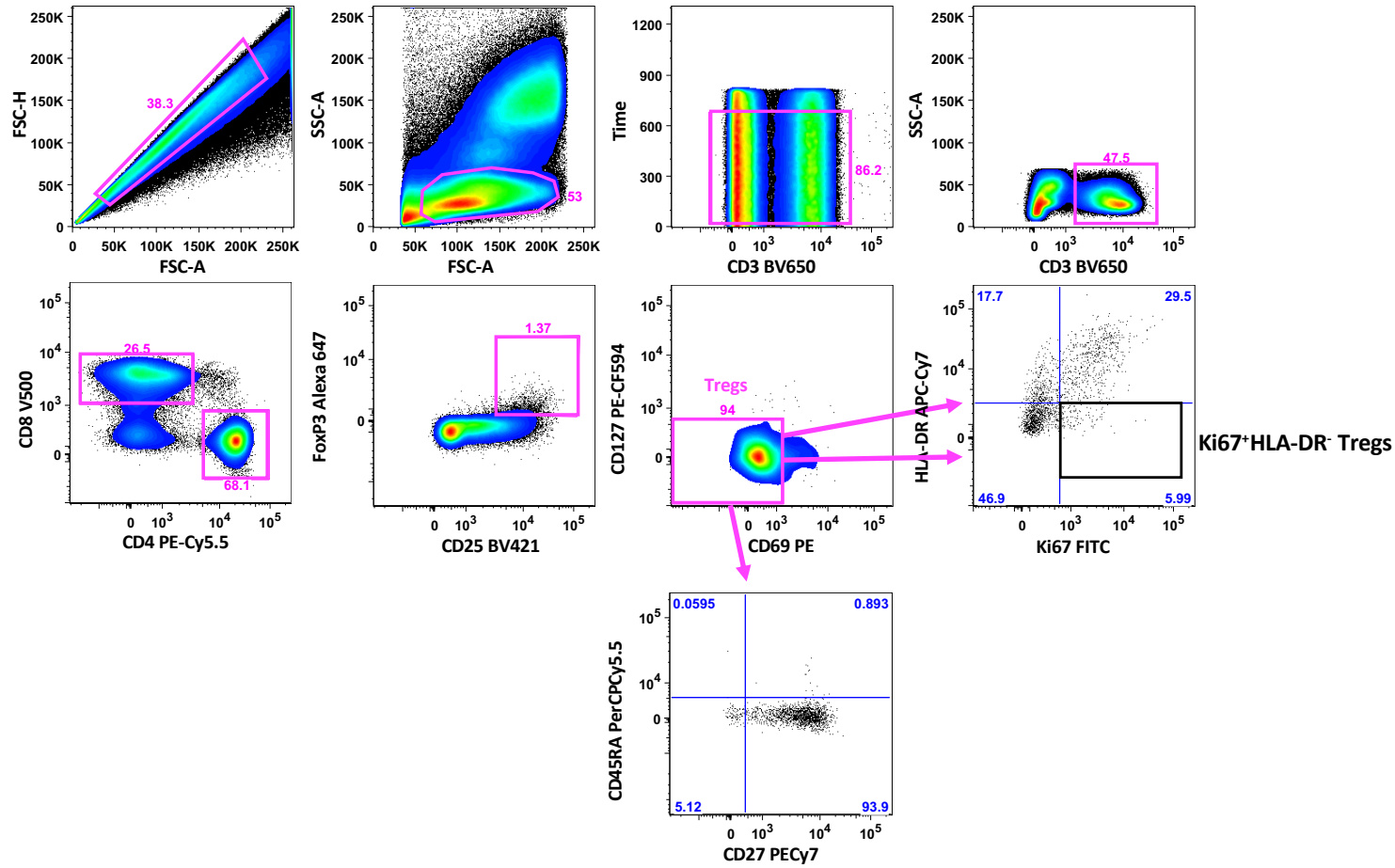
Supplementary Figure 8: Early Differentiated (ED) memory CD4⁺ Ki67⁺HLA-DR⁻ Treg cells and the relationship between microbiological outcome. A. Comparison of ED (CD27⁺CD45RA⁻) Mtb-stimulated Ki67⁺HLA-DR⁻ Treg cells between fast (<71 days, n=20) and slow (>71 days, n=16) responders; black solid symbols represent fast responders and red symbols represent slow responders. Six patients were excluded due to either not enough Ki67⁺HLA-DR⁻ Treg cells in the analysis gate or missing samples (n=1). B. Comparison of ED (CD27⁺CD45RA⁻) PPD-stimulated Ki67⁺HLA-DR⁻ Treg cells between fast (<71 days, n=13) and slow (>71 days, n=9) responders; black solid symbols represent fast responders and red symbols represent slow responders. Twenty patients were excluded due to either not enough Ki67⁺HLA-DR⁻ Treg cells in the analysis gate or missing samples (n=10). C & D: Pearson correlation between ED (CD27⁺CD45RA⁻) Mtb- and PPD- stimulated Ki67⁺HLA-DR⁻ Treg cells with log₁₀ TCC.

Supplementary Figure 9: Pearson correlation between % Log₁₀ bulk Treg cells and Log₁₀ time to culture conversion (TCC) in response to Mtb and PPD stimulus. Black symbols represent rapid responders and red symbols represent slow responders. Mtb = mycobacterium tuberculosis; PPD = purified protein derivative.

Supplementary Figure 10: Model diagram summarizing the correlation between response to MDR-TB treatment and the frequency of total Tregs and Ki67⁺HLA-DR⁻ Tregs. The red boxed area denotes slow response to treatment and the black boxed area denotes fast response to treatment. Numbers indicate the median values of Ki67⁺HLA-DR⁻ Treg cells \pm interquartile ranges (IQR) within each responder group. The bottom legend indicates the median time (71 days) to culture conversion, which allow the stratification of patients as fast and slow responders to MDR-TB treatment.

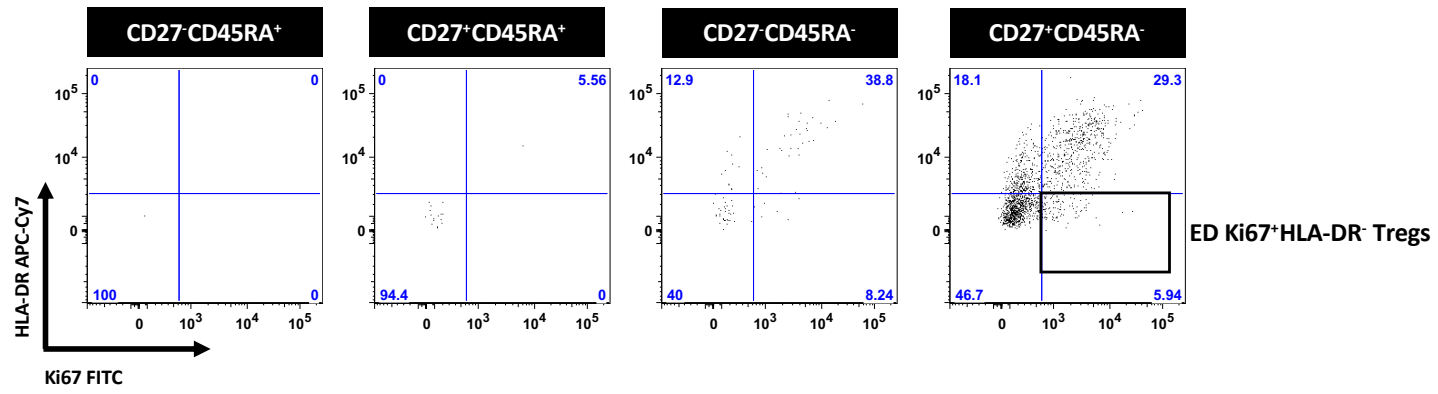
Supplementary Figure 11: Longitudinal analysis of log₁₀ transformed Mtb-stimulated Ki67⁺HLA-DR⁻ Treg frequencies from baseline (month 0), month 2 and month 6 of MDR-TB treatment. Black solid and dotted lines represent the mean observed and modeled values, respectively, for rapid responders. Red solid and dotted lines represent the mean observed and modelled values, respectively, for slow responders. The shaded area represents the 95% confidence intervals. P-values were derived from the mixed effect linear regression model using maximum likelihood estimation on the unimputed data, with adjustment for the following covariates: age, gender, and BMI.

A



Ki67⁺HLA-DR⁺ Tregs

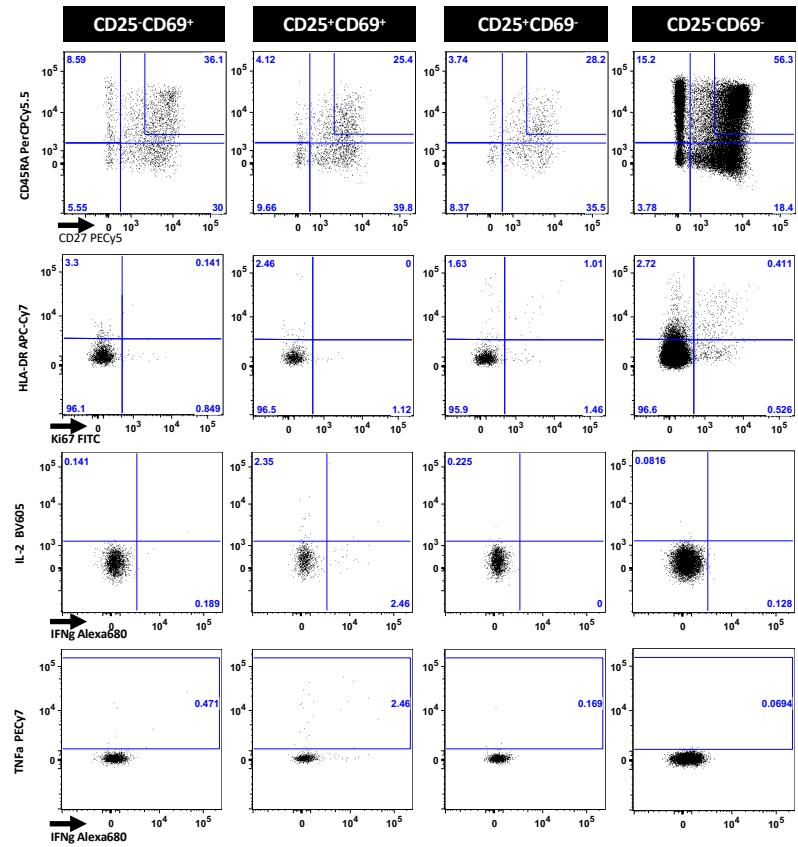
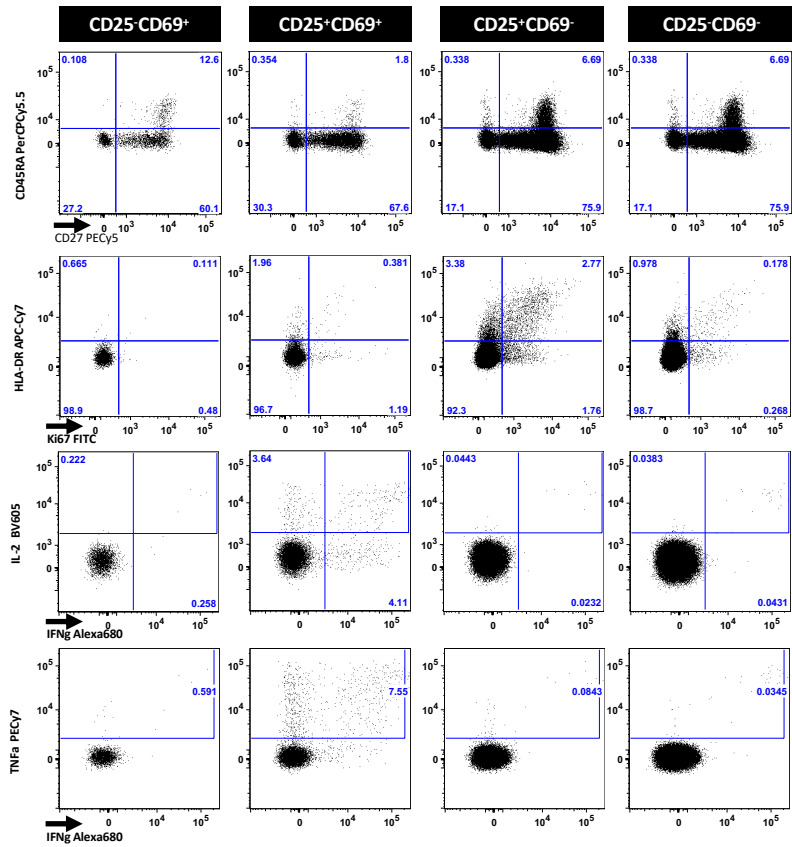
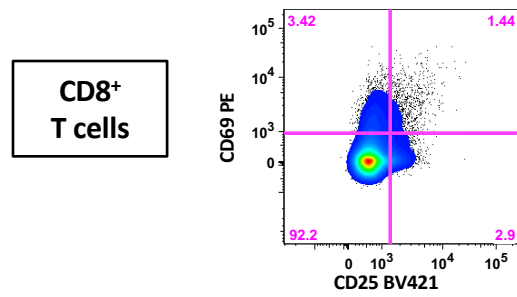
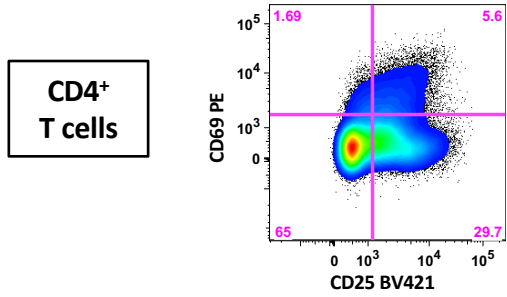
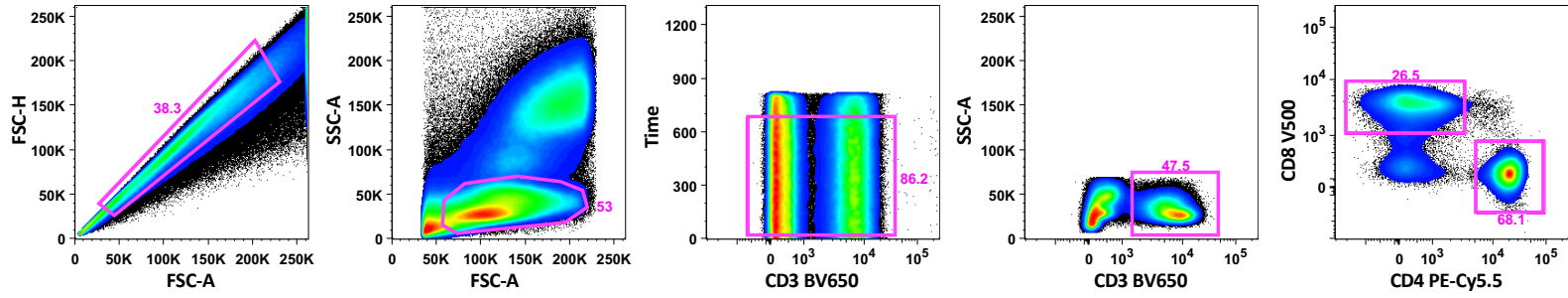
TD Naive LD ED



ED Ki67⁺HLA-DR⁺ Tregs

SF1

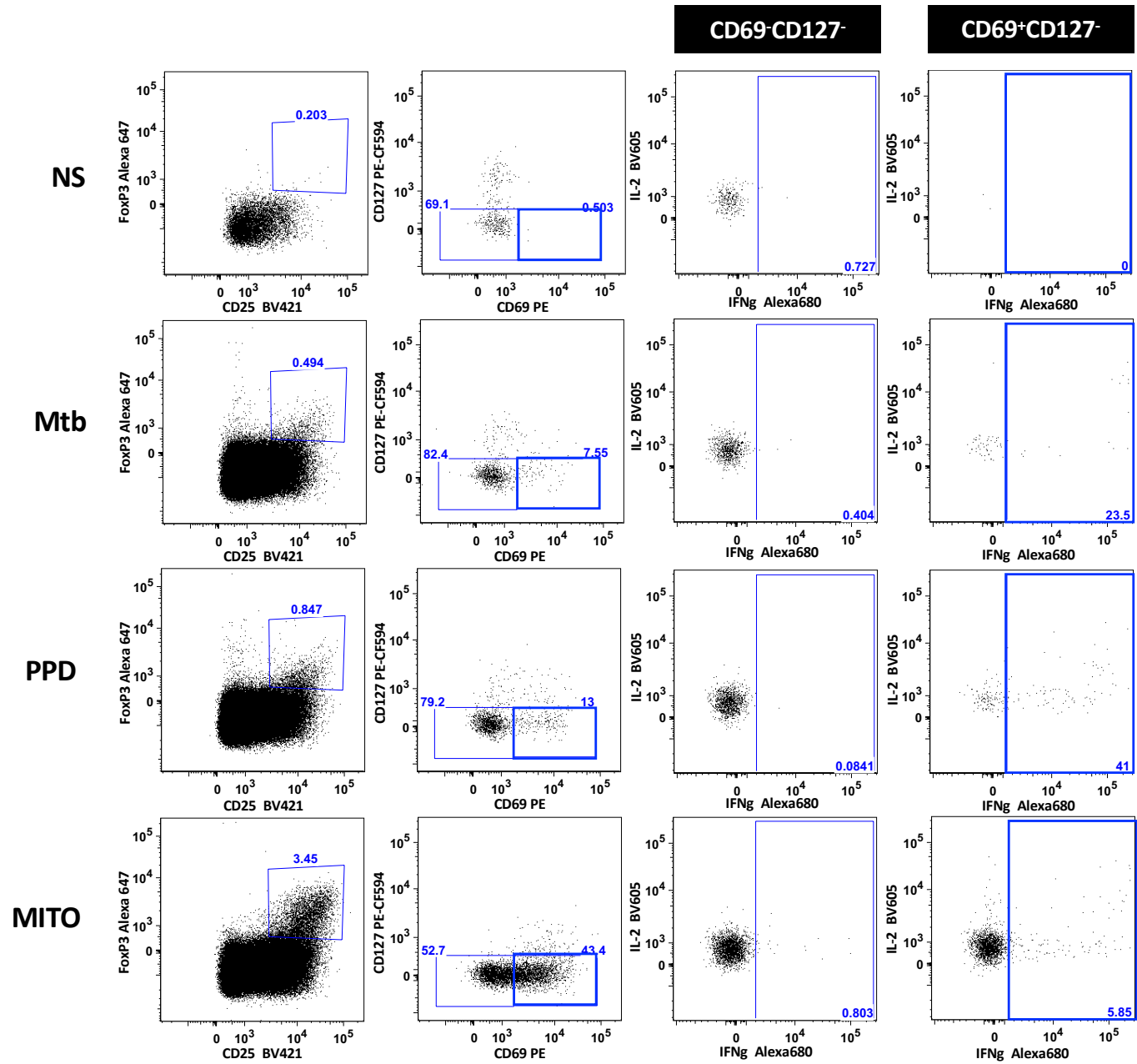
B



SF1

C

Gated on **CD3+CD4+**



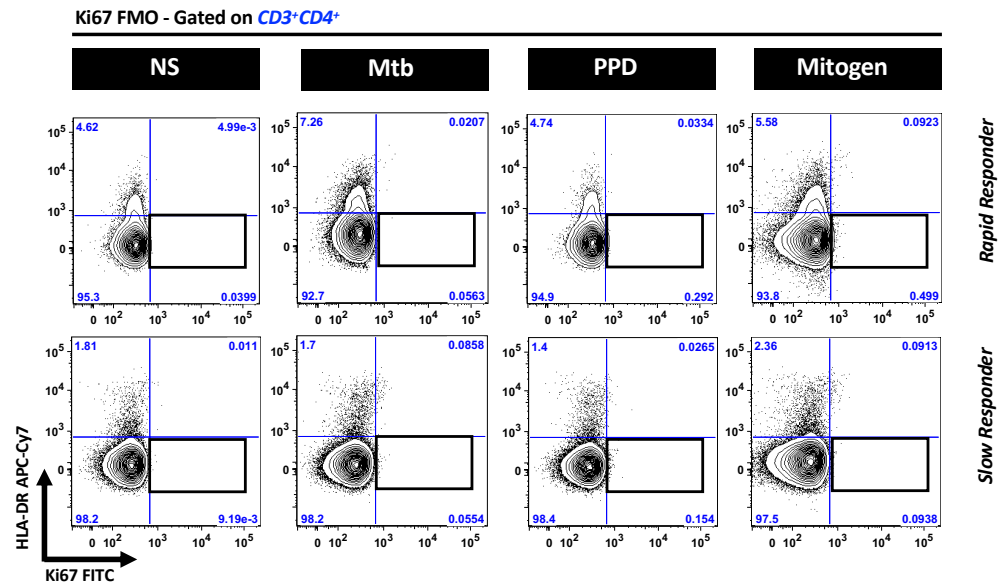
SF1

A

Ref.#	Antibody	Fluorescence	Clone	Isotype	Company
317324	Anti-human CD3	BV650	OKT3	Mouse IgG2a,k	Biolegend
MHCD0418	Anti-human CD4	PECy5.5	S3.5	Mouse IgG2a	Invitrogen
560774	Anti-human CD8	V500	RPA-T8	Mouse IgG1,k	BD Biosciences
562442	Anti-human CD25	BV421	M-A251	Mouse IgG1,k	BD Biosciences
15-0279	Anti-human CD27	PECy5	O323	Mouse IgG1,k	eBiosciences
563429	Anti-human CD45RA	PerCP-Cy5.5	HI100	Mouse IgG2b,k	BD Biosciences
341652	Anti-human CD69	PEGreen	L78	Mouse IgG1,k	BD Biosciences
562397	Anti-human CD127	PE-CF594	HIL-7R-M21	Mouse IgG1,k	BD Biosciences
307618	Anti-human HLA DR	APC-Cy7	L243	Mouse IgG2a,k	Biolegend
557995	Anti-human IFN γ	Alexa700	B27	Mouse IgG1,k	BD Biosciences
557647	Anti-human TNF α	PECy7	MAb11	Mouse IgG1,k	BD Biosciences
556026	Anti-human Ki67	FITC	B56	Mouse IgG1,k	BD Biosciences
563947	Anti-human IL-2	BV605	5344.111	Mouse IgG1,k	BD Biosciences
560045	Anti-human FoxP3	Alexa647	259D/C7	Mouse IgG1	BD Biosciences
562574	Transcription Factor Buffer Set				BD Biosciences
552843	Compensation Bead Anti-mouse Ig,k				BD Biosciences
563794	Brilliant Stain buffer				BD Biosciences

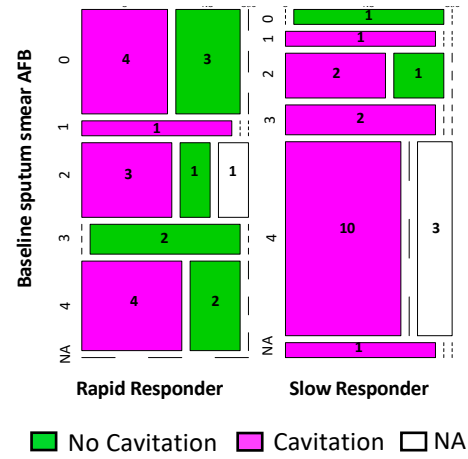
Surface staining
 Intracellular staining
 Other reagents

B



SF3

Inside each box is the number of patients.



SC-positive patients (N=42)

Microbiological Outcome

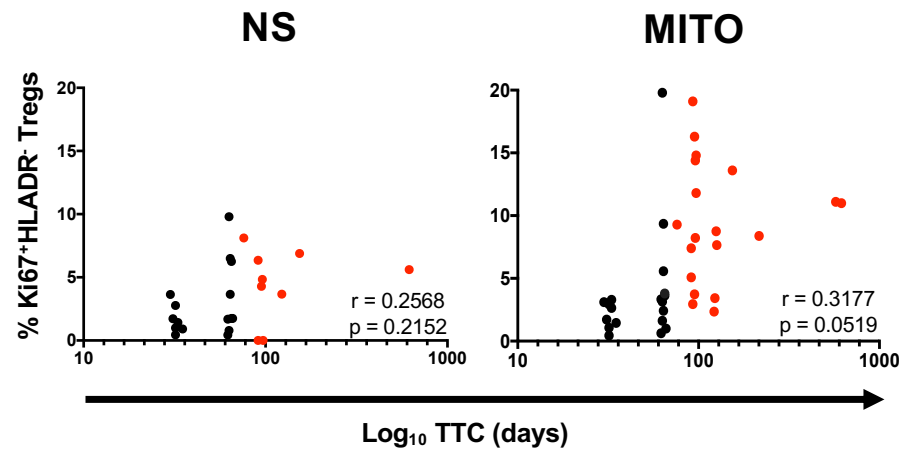
Baseline Cavitation

p = 0.0673 Fisher's exact test

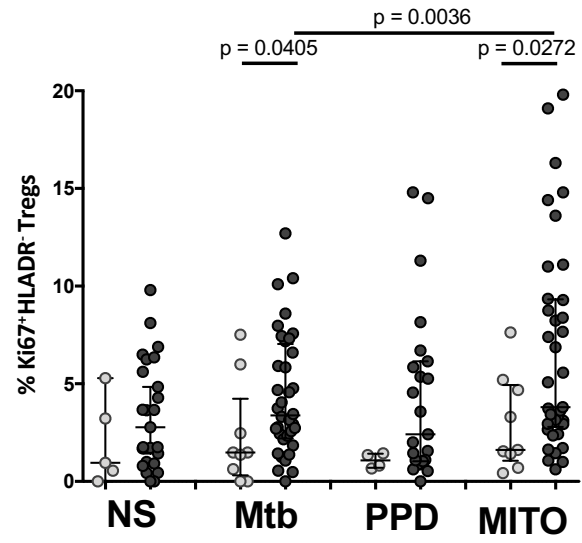
Baseline Sputum Smear AFB

p = 0.0071; r = 0.4142

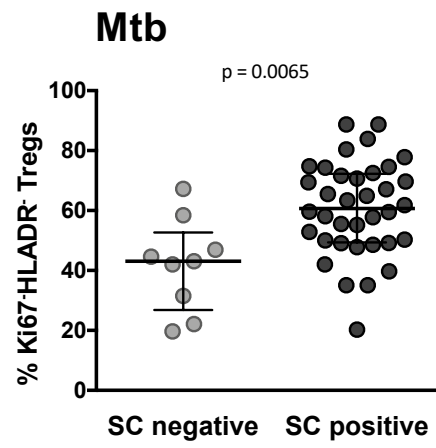
SF4



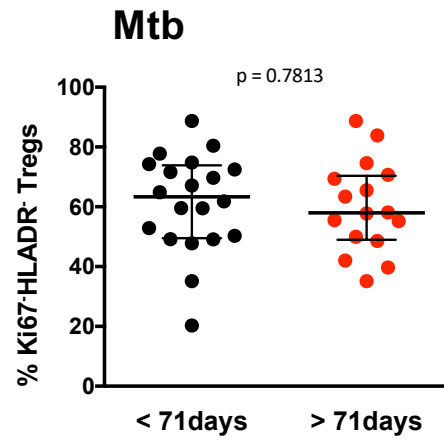
SF5



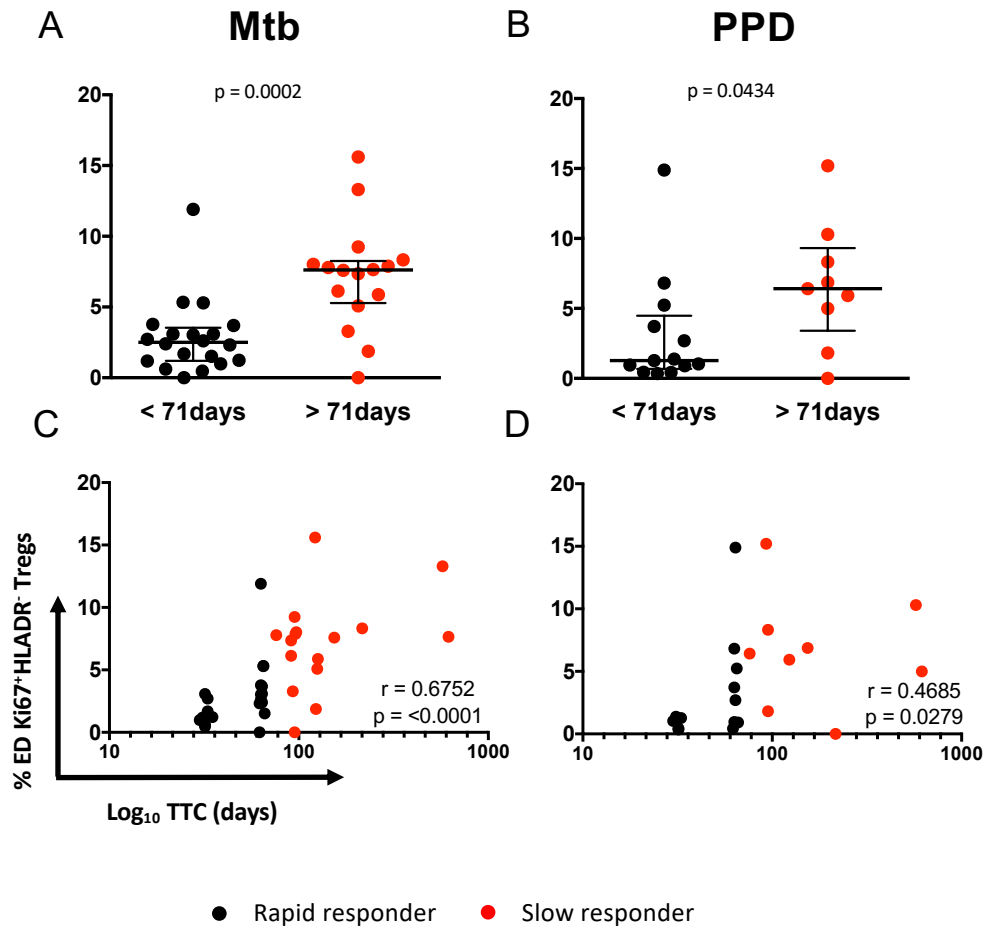
SF6



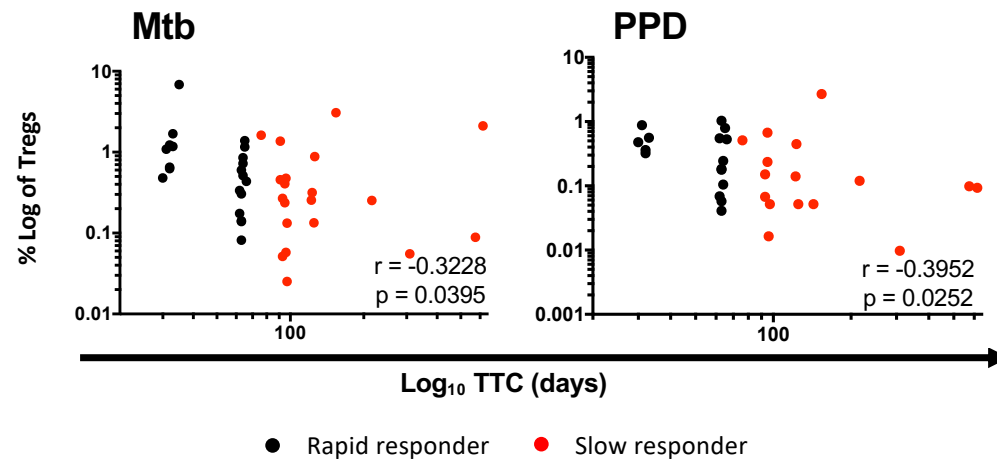
SF7



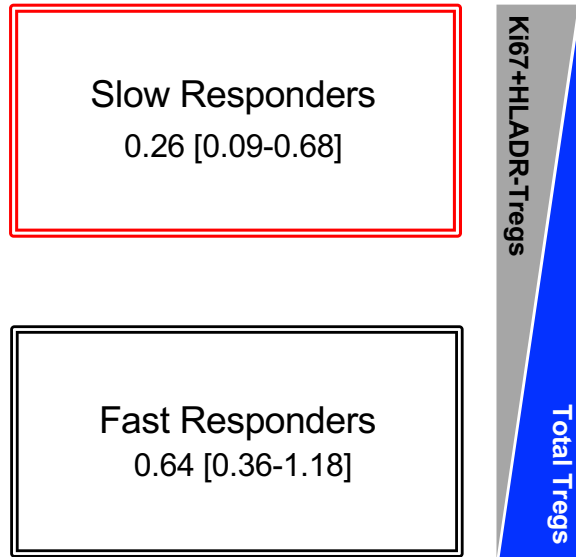
SF8



SF9



SF10



SF11

